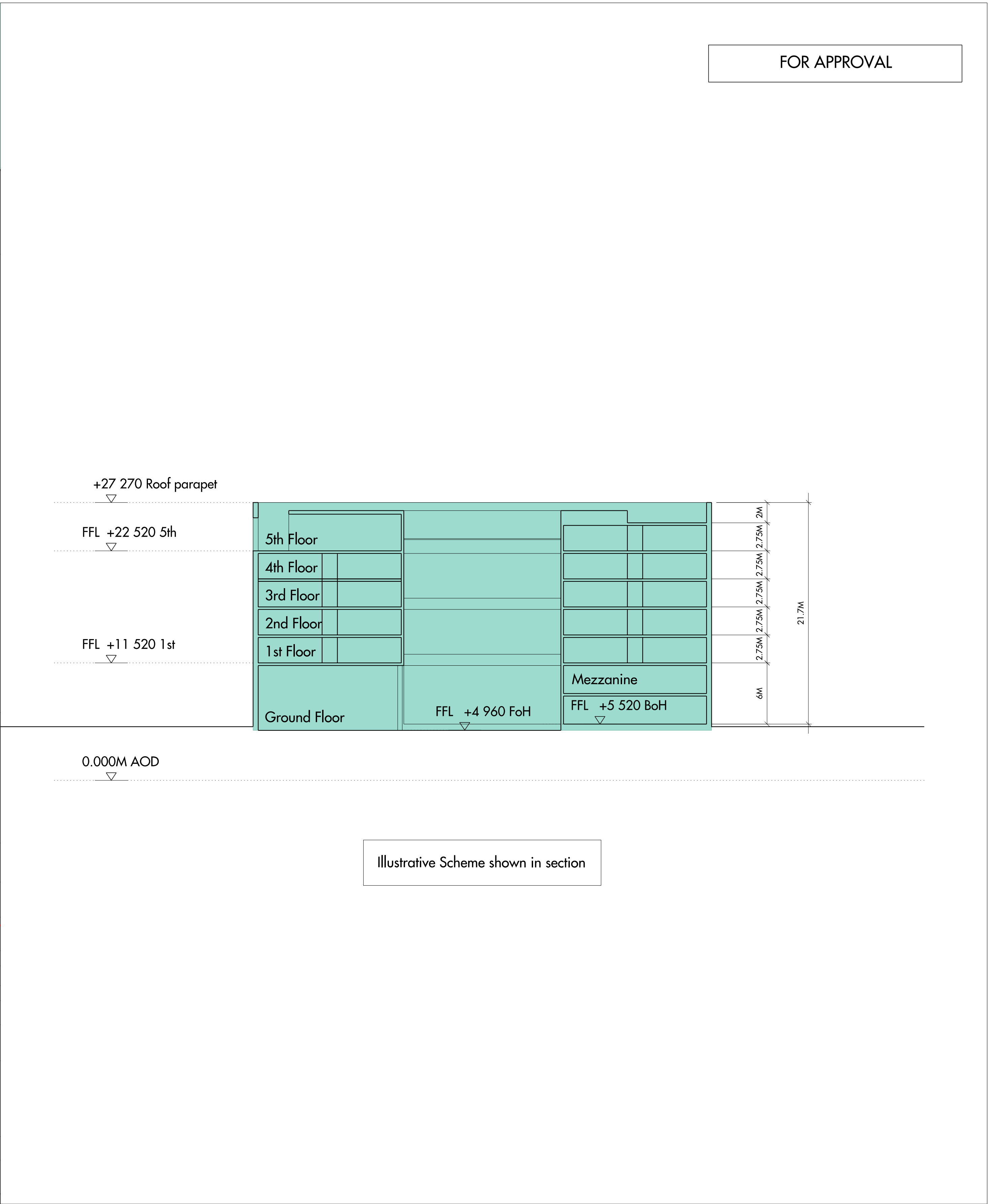
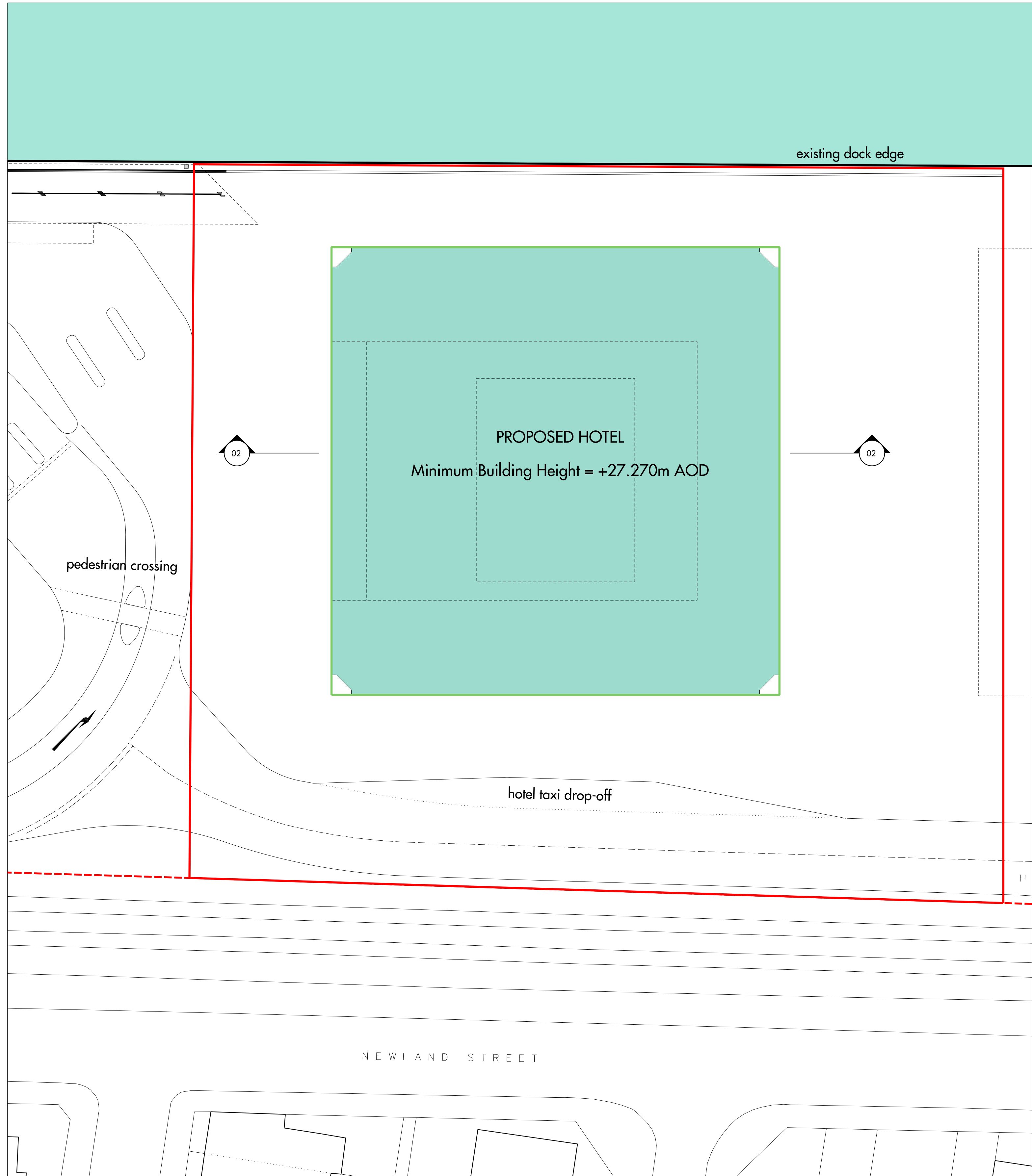
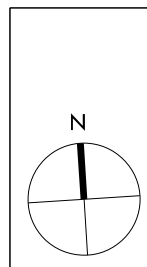


FOR APPROVAL



01 PARAMETER PLAN  
SCALE 1:250

02 SECTION BB  
SCALE 1:250



Do not scale from this drawing. Use figured dimensions only. Figured dimensions are in millimetres. All levels are in metres. All dimensions and levels shall be verified on site before proceeding with works. Detailed site survey to be carried out to verify positions and level relationships with site features and ordnance survey. The architect must be notified of any discrepancy. Where building components are described in the specification as contractor designed, "construction" information relating to those components on this drawing represents design intent only.

REV	DATE	DESCRIPTION	CKD
P1	15.07.13	PLANNING SUBMISSION ISSUE	JB

- KEY
- Red line for primary application 'Application CADP 1'
  - Red line for hotel outline application 'Application CADP 2'
  - Maximum Building Plot
  - Illustrative Scheme
  - Building Envelope

Allies and Morrison  
85 Southwark Street  
London SE1 0HX  
020 7921 0100  
020 7921 0101  
info@alliesandmorrison.com  
A&M JOB NO: 859

CITY AIRPORT HOTEL  
10.5 PROPOSED MINIMUM HEIGHTS  
PARAMETER PLAN  
859\_07\_104  
SCALE 1:250 @A1 1:500@A3

P1  
Revision