

Didcot Garden Town HIF1 Public Inquiries – Site Visit Itinerary

No.	Location	Time	Comments
Day 1: Monday 4 March			
	Bee House	12:45 - 13:00	Meeting point Bee House, Milton Park, OX14 4SB (PPE Distribution).
1	Backhill Tunnel	13:05 - 13:35 (30 mins)	Walk through Backhill Tunnel to A4130 walk along the shared foot/cycle path to view the allocated sites.
2	Sir Frank Williams Avenue	13:40 - 14:00 (20 mins)	Walk along the shared foot/cycle path on the A4130 to view the allocated sites.
3	Gary O'Donnell Drive	14:05 - 14:10 (5 mins)	Viewpoint of southern of the Didcot Science Bridge and the allocated sites.
4	Hely Hutchinson Centre	14:15 - 14:25 (10 mins)	Walk along Milton Road to see former Didcot A Power Station and northern side of the Didcot Science Bridge.
5	RWE Technical Support Centre	14:30 – 15:10 (40 mins)	PPE & RWE Safety briefing (///barks.finer.estimated) View the existing & proposed gatehouses, existing and propose lagoons and football pitch. Walk up the NCR5 to view allocated sites.
6	Collett Roundabout	15:15 – 15:20 (5 mins)	View the allocated sites & operation of Collett Roundabout
7	FCC Office	15:25 - 15:55 (30 mins)	PPE & FCC Safety Briefing (///grace.breath.sparks) Walk on PROW 106/4/10 to view lakes, landfill sites (former and active), walk on private land to view southern side of Appleford railway sidings.
8	River Thames & Restoration Lakes	16:00 - 16:05 (5 mins)	View of the River Thames (southern side) and restoration lakes.
9	B4016	16:10 - 16:50 (40 mins)	Walk along the existing PROW 106/8/10 towards Appleford, then south on a private track towards the location of northern side of Appleford railway.
10	Appleford Recreation Ground	16:55 - 17:25 (30 mins)	
Return to Bee House			

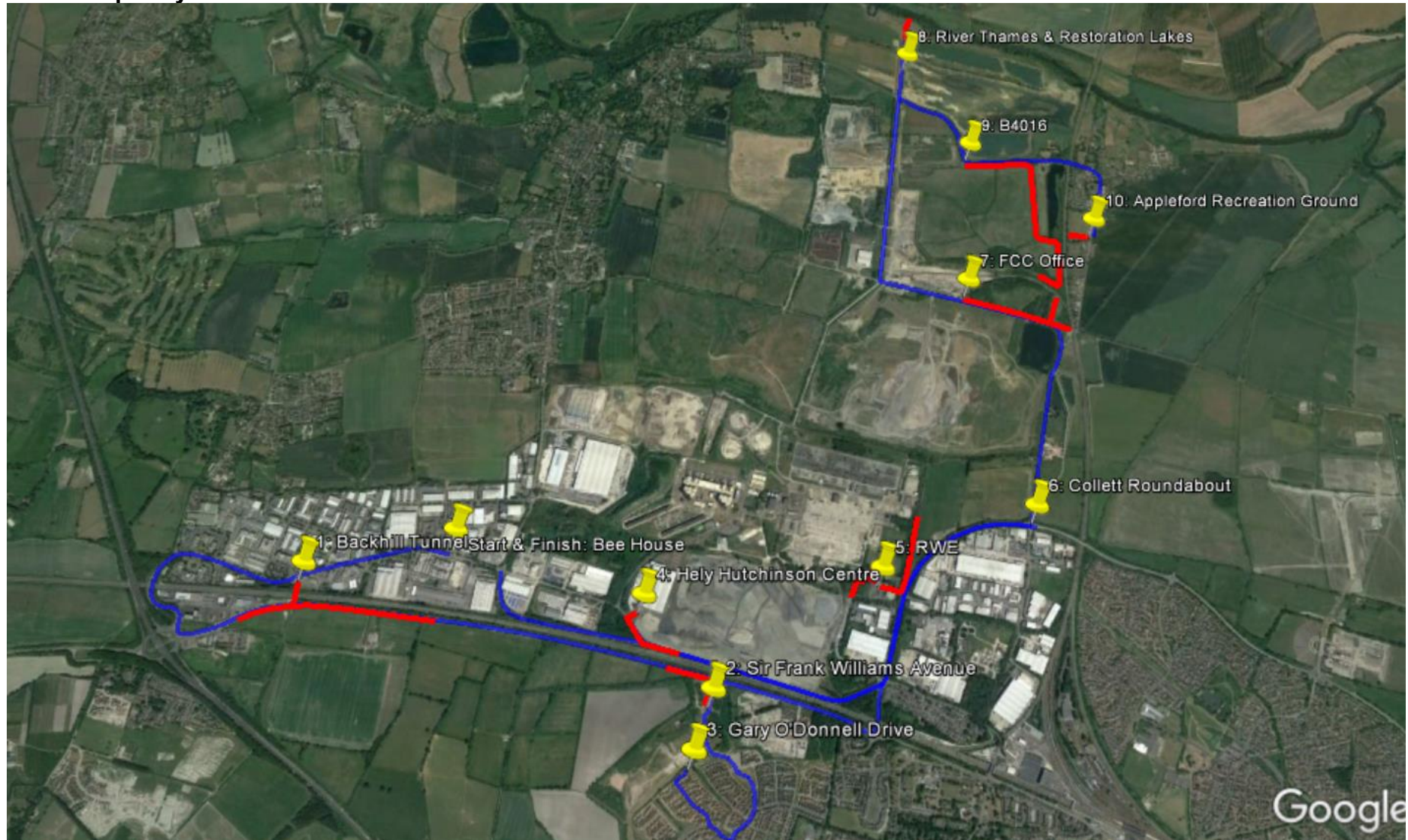
Didcot Garden Town HIF1 Public Inquiries – Site Visit Itinerary

No.	Location	Time	Comments
Day 2: Tuesday 5 March			
Bee House		09:45 - 10:00	Meeting point Bee House, Milton Park, OX14 4SB (PPE Distribution).
11	Clifton Hampden Village Hall	10:30 - 11:15 (45 mins)	Travel via Long Wittenham & Clifton Hampden Bridge.
12	Golden Balls Roundabout	11:20 - 11:45 (15 mins)	Observe the roundabout and the A4074 corridor.
13	Nuneham Courtenay	11:50 – 12:10 (20 mins)	Walk the length of Nuneham Courtenay
14	Berinsfield Roundabout	12:15 - 12:30 (15 mins)	Observe the roundabout and the A4074 corridor.
Lunch – Co-op Food Berinsfield		12:35 - 12:55 (20 mins)	
15	Culham Station (East)	13:10 - 14:40 (90 mins)	Walk along A415 and Thame Lane to view allocated sites and alignment of Clifton Hampden Bypass.
16	Culham Station (West)	14:45 - 15:05 (20 mins)	Walk along A415 to view allocated sites and alignment of the River crossing.
17	Hales Meadow Car Park	15:10 - 15:40 (30 mins)	Walk along A415 over the River Thames to Abingdon town centre.
18	Culham Lock Car Park (subject to Thames Path being accessible)	15:45 - 16:45 (60 mins)	Walk along the Thames Path to see alignment of the River crossing north of the River Thames.
19	The Green, Sutton Courtenay	16:55 – 17:15 (20 mins)	
Return to Bee House			

Didcot Garden Town HIF1 Public Inquiries – Site Visit Itinerary

Route Map: Day 1

Blue – Minibus Red – Walk



Didcot Garden Town HIF1 Public Inquiries – Site Visit Itinerary

Route Map: Day 2

Blue – Minibus Red – Walk

