

Adran yr Economi a'r Seilwaith
Department for Economy and Infrastructure



Llywodraeth Cymru
Welsh Government

The M4 Motorway (Junction 23 (East of Magor) to West of Junction 29 (Castleton) and Connecting Roads) and The M48 Motorway (Junction 23 (East of Magor) Connecting Road) Scheme 201-

The M4 Motorway (Junction 23 (East of Magor) to West of Junction 29 (Castleton) and Connecting Roads) and The M48 Motorway (Junction 23 (East of Magor) Connecting Road) (Amendment) Scheme 201-

The London to Fishguard Trunk Road (East of Magor to Castleton) Order 201-

The M4 Motorway (West of Magor to East of Castleton) and the A48(M) Motorway (West of Castleton to St Mellons)(Variation of Various Schemes) Scheme 201-

The M4 Motorway (Junction 23 (East of Magor) to West of Junction 29 (Castleton) and Connecting Roads) and the M48 Motorway (Junction 23 (East of Magor) Connecting Road) and The London to Fishguard Trunk Road (east of Magor to Castleton) (Side Roads) Order 201-

The Welsh Ministers (The M4 Motorway (Junction 23 (East of Magor) to West of Junction 29 (Castleton) and Connecting Roads) and the M48 Motorway (Junction 23 (East of Magor) Connecting Road) and the London to Fishguard Trunk Road (East of Magor to Castleton)) Compulsory Purchase Order 201-

The M4 Motorway (Junction 23 (East Of Magor) to West of Junction 29 (Castleton) and Connecting Roads) and The M48 Motorway (Junction 23 (East Of Magor) Connecting Road) (Supplementary) Scheme 201-

The Welsh Ministers (The M4 Motorway (Junction 23 (East Of Magor) to West of Junction 29 (Castleton) and Connecting Roads) and The M48 Motorway (Junction 23 (East Of Magor) Connecting Road) and The London to Fishguard Trunk Road (East of Magor to Castleton)) Supplementary Compulsory Purchase Order 201-

Appendices to Proof of Evidence

Peter Ireland, MA (Oxon), D.Phil

Welsh Government, Environment - General

Document Number: WG 1.7.3

Appendices

| | | |
|---|---|--------|
| A | Environmental Overview Figures (Legend & 8 pages) | Page 3 |
| B | List of Meetings on Environmental Matters | Page 4 |

Appendix A

Environmental Overview Figures

- Permanent highway land within fenceline, including water treatment areas
- Other permanent land take e.g. mitigation planting.
- Temporary construction land
- Residential property demolition

Nationally designated nature conservation sites

- Site of Special Scientific Interest

Locally designated nature conservation sites and nature reserves

- Wildlife Trust Reserve
- Site of Interest for Nature Conservation

Key habitats and vegetation

- Scattered saltmarsh
- Broad leaved semi-natural Woodland
- Broad leaved plantation Woodland
- Scrub dense continuous
- Semi-improved Neutral grassland
- Marsh/marshy grassland
- Saltmarsh dense/continuous
- Important hedgerows (2014)
- Important hedgerows (2015)

Aquatic Macrophyte 20m Sample

- High value
- Very high value

Protected and notable species

2014 and 2015 Reptile Surveys

- Grass Snake
- Common Lizard
- Slow Worm

2014 and 2015 Great Crested Newt Surveys

- GCN Present
- GCN found during 2015 reptile survey

2015 and 2016 Bat Roost Survey (trees)

- Trees confirmed to support roosting bats
- Probable bat roost in building

2015 and 2016 Bat Roost Survey (buildings)

- Confirmed bat roost in building
- Probable bat roost in building
- Surveyed building or structure - no confirmed bat roosts

Average number of bat passes for survey visit 2015

- 500-1500
- >1500
- >2500 bat passes recorded during one survey visit

2014 Bat Activity Index

- >1500

2014 and 2015 Otter and Watervole Surveys

- Watercourses/waterbodies with signs of watervole activity
- Watercourses/waterbodies with signs of otter activity
- Watervole Presence Confirmed

2014,2015 and 2016 Hazel Dormouse Surveys

- Dormouse Presence
- Possible Dormouse Presence

Areas Important for Birds

- Important area for Cetti's Warbler
- Important area for wintering birds

Areas identified for archaeological excavation or evaluation as set out in the Cultural Heritage Management Plan

- Gwent Levels Landscape of Outstanding Historic Interest
- Listed Building Grade I
- Listed Building Grade II*
- Listed Building Grade II

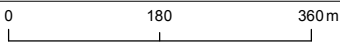
- Scheduled Monument
- Conservation Area

Cultural Heritage Mitigation Work

- Evaluation Site
- Excavation Site

Areas of potentially contaminated land

- Sites of Potential Land Contamination



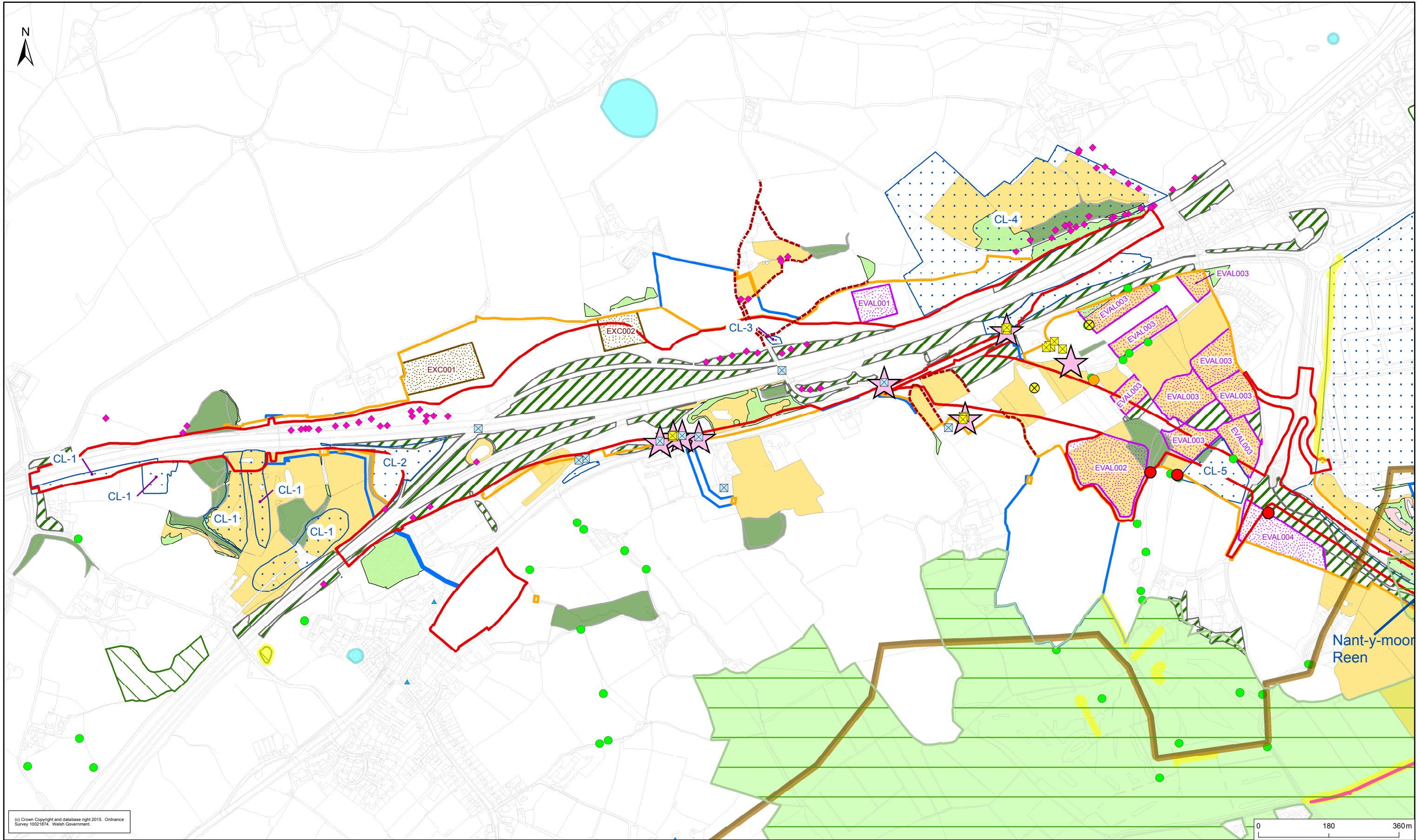
Title
Environmental Overview (legend)

Drawing Number
Appendix A of WG 1.7.3

Rev
-

| | | |
|--------------------|-----------------------|------------------------|
| Status AT ISSUE | Drawn By MS | PM/Checked By PI |
| Job Ref OXF9458 | Scale @ A3 1:9,000 | Date Created JAN 16 |

| Rev | Description | Date | Initial | Checked |
|-----|-------------|------|---------|---------|
| | | | | |



(c) Crown Copyright and database right 2015. Ordnance Survey 10001674. Welsh Government.

Legend

Please refer to separate legend sheet.

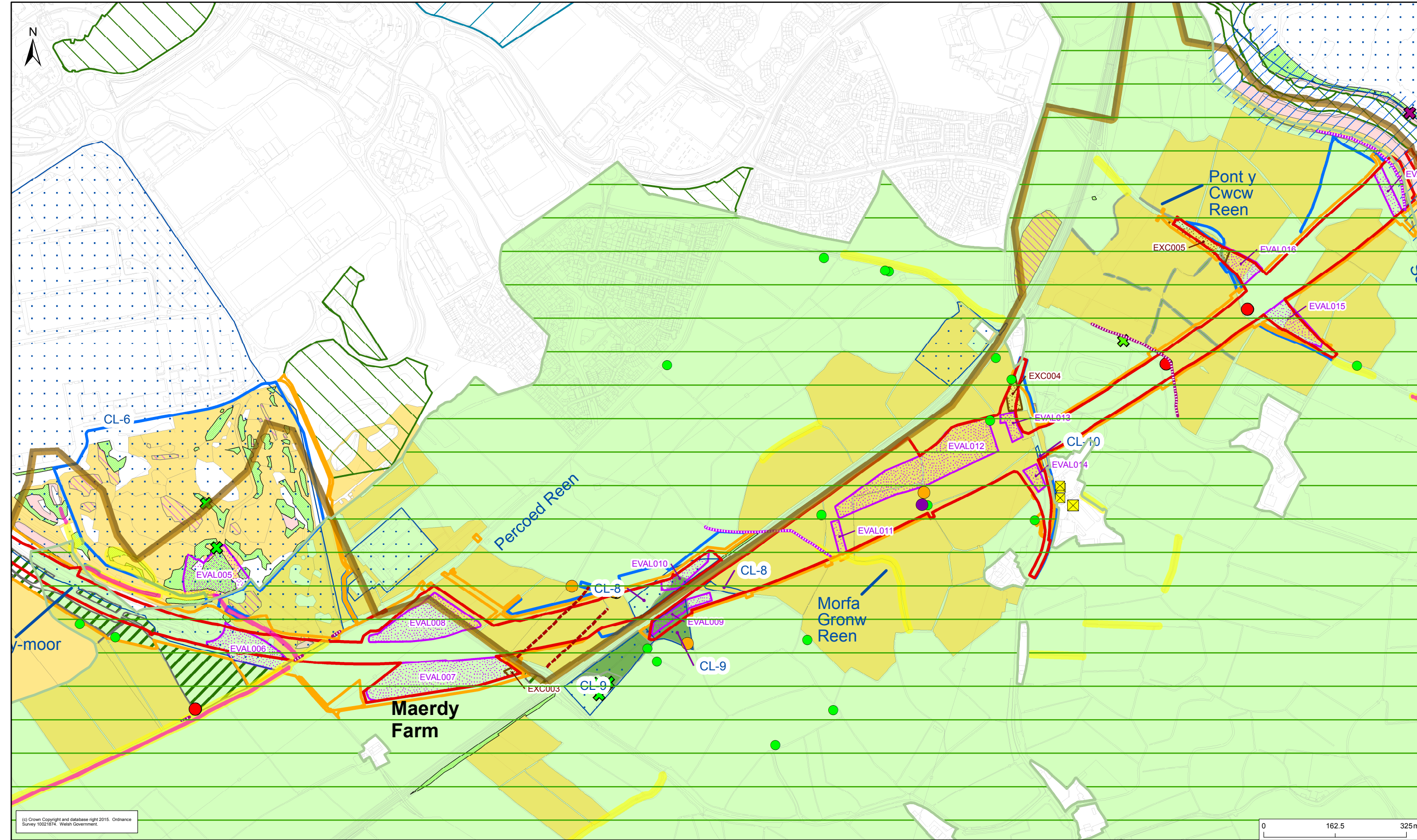


Title
Environmental Overview
Page 1 of 8

Drawing Number
Appendix A of WG 1.7.3

Rev
-


| | | | | |
|--------------------|-----------------------|------------------------|---------|---------|
| Status AT ISSUE | Drawn By MS | PM/Checked By PI | | |
| Job Ref OXF9458 | Scale @ A3 1:9,000 | Date Created JAN 16 | | |
| | | | | |
| | | | | |
| Rev | Description | Date | Initial | Checked |



Legend

Please refer to separate legend sheet.

OXF8235-0629-10



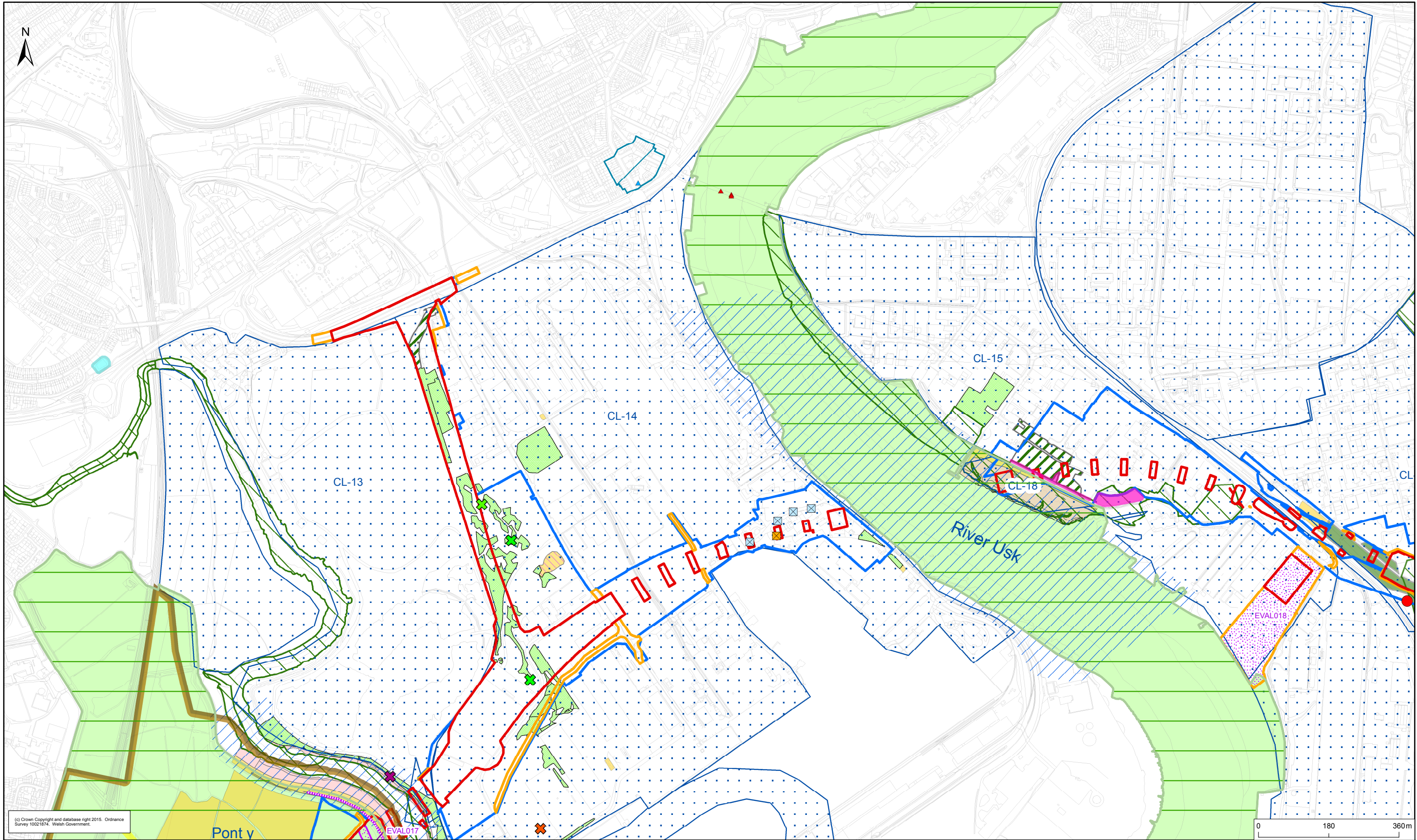
Llywodraeth Cymru
Welsh Government

Title
Environmental Overview
Page 2 of 8

Drawing Number
Appendix A of WG 1.7.3

Rev
-


| | | | | |
|---------------------------|------------------------------|-------------------------------|---------|---------|
| Status AT ISSUE | Drawn By MS | PM/Checked By PI | | |
| Job Ref OXF9458 | Scale @ A3 1:8,000 | Date Created JAN 16 | | |
| Rev | Description | Date | Initial | Checked |



Legend

Please refer to separate legend sheet.

(c) Crown Copyright and database right 2015. Ordnance Survey 10021074. Welsh Government.



Llywodraeth Cymru
Welsh Government

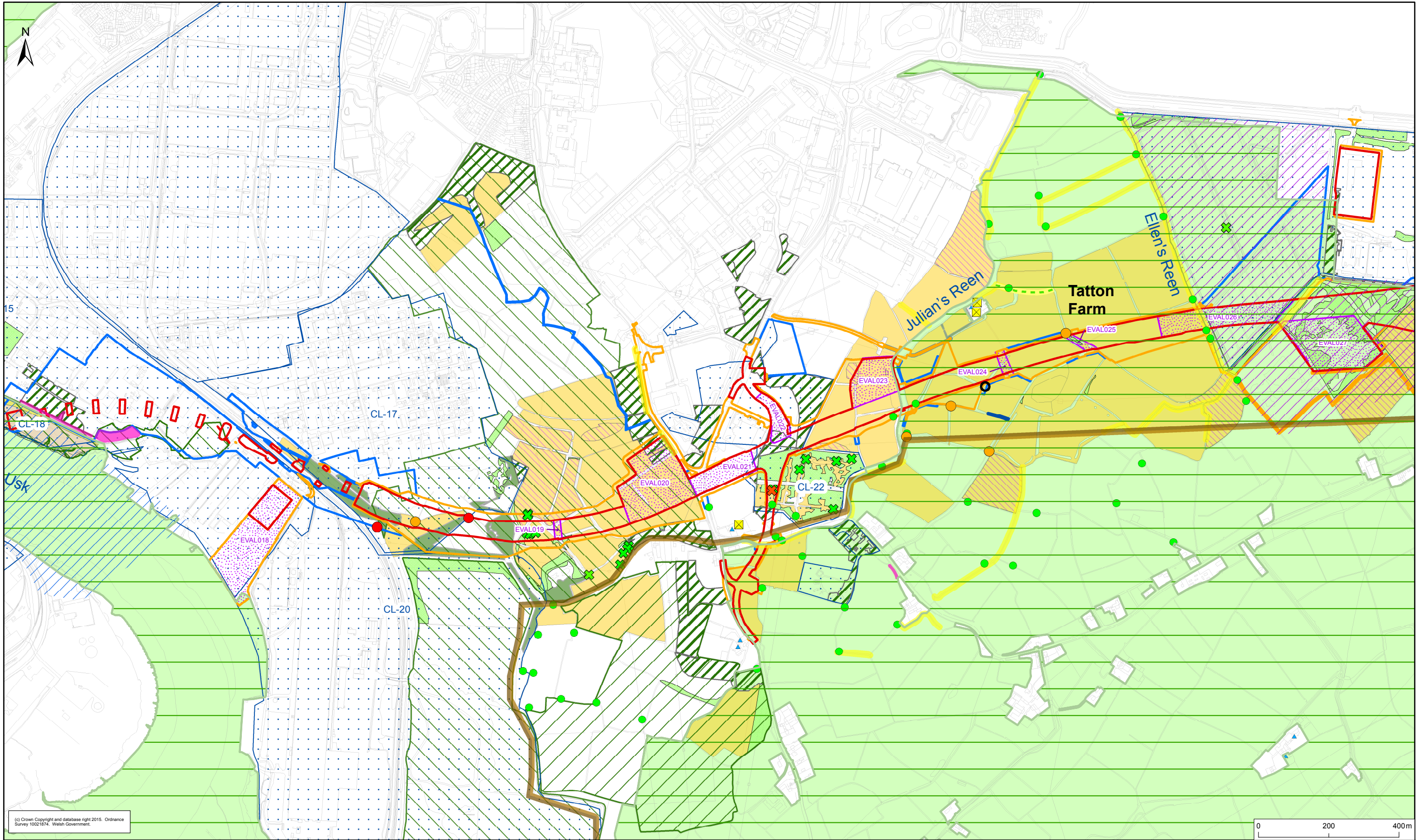
Title
Environmental Overview
Page 3 of 8

Drawing Number
Appendix A of WG 1.7.3

Rev
-

| | | | | |
|--------------------|-----------------------|------------------------|---------|---------|
| Status AT ISSUE | Drawn By MS | PM/Checked By PI | | |
| Job Ref OXF9458 | Scale @ A3 1:9,000 | Date Created JAN 16 | | |
| | | | | |
| | | | | |
| Rev | Description | Date | Initial | Checked |

OXF8235-0629-10



(c) Crown Copyright and database right 2015. Ordnance Survey 10001674. Welsh Government.

Legend

Please refer to separate legend sheet.



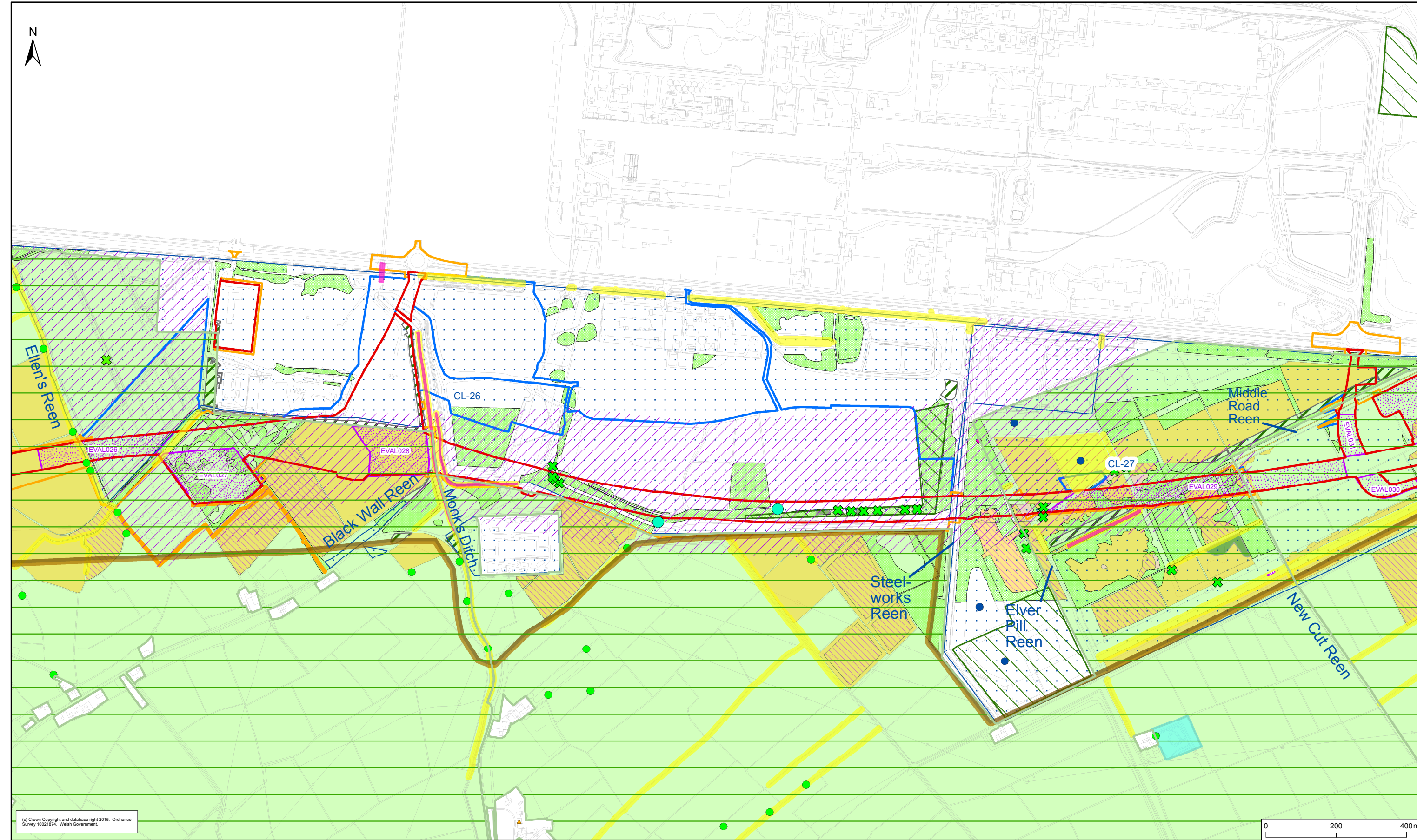
Title
Environmental Overview
Page 4 of 8

Drawing Number
Appendix A of WG 1.7.3

Rev
-

| | | |
|---------------------------|-------------------------------|-------------------------------|
| Status AT ISSUE | Drawn By MS | PM/Checked By PI |
| Job Ref OXF9458 | Scale @ A3 1:10,000 | Date Created JAN 16 |


| Rev | Description | Date | Initial | Checked |
|-----|-------------|------|---------|---------|
| | | | | |



Legend

Please refer to separate legend sheet.

OXF8235-0629-10



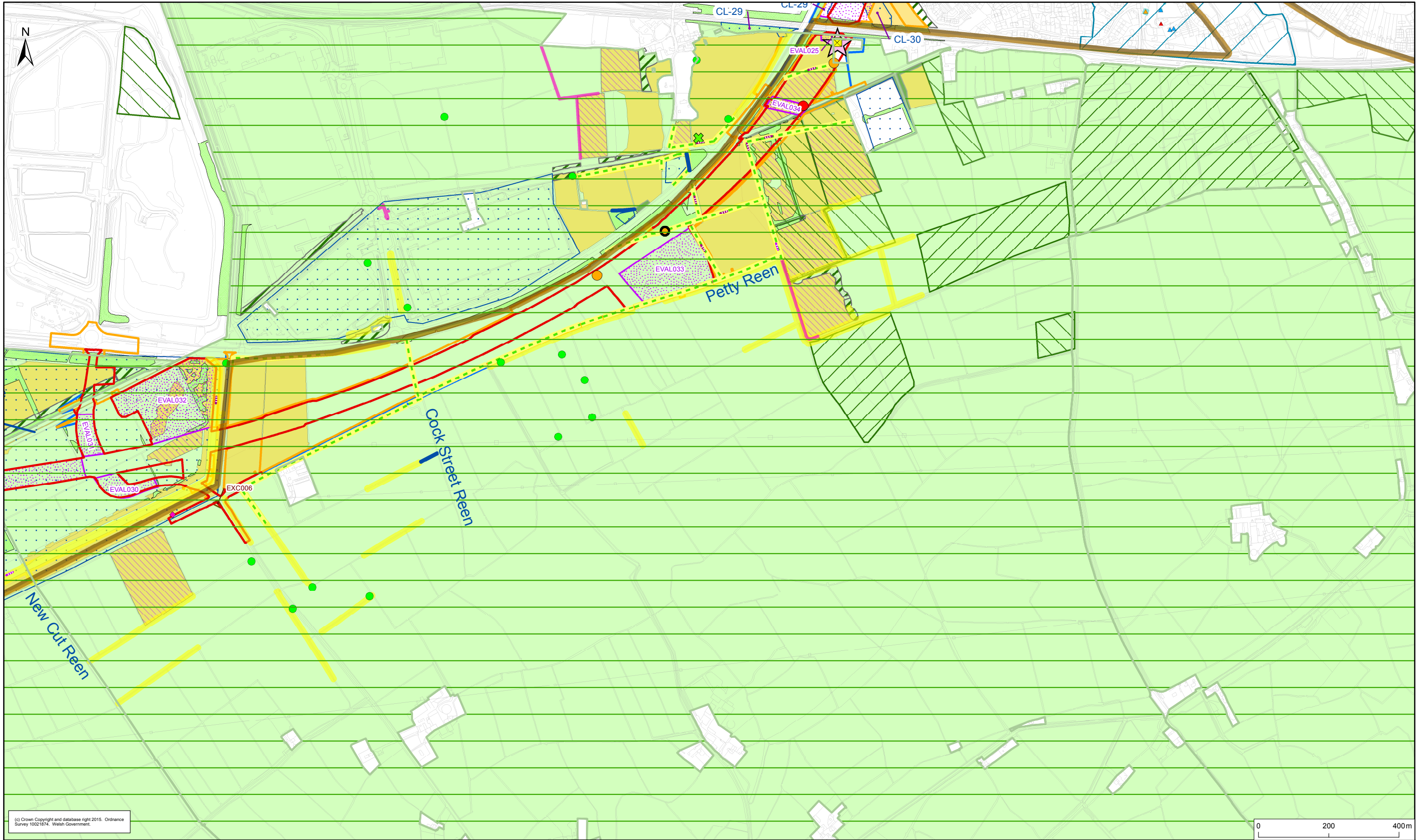
Llywodraeth Cymru
Welsh Government

Title
Environmental Overview
Page 5 of 8

Drawing Number
Appendix A of WG 1.7.3

Rev
-

| | | | | |
|---------------------------|-------------------------------|-------------------------------|---------|---------|
| Status AT ISSUE | Drawn By MS | PM/Checked By PI | | |
| Job Ref OXF9458 | Scale @ A3 1:10,000 | Date Created JAN 16 | | |
| Rev | Description | Date | Initial | Checked |



(c) Crown Copyright and database right 2015. Ordnance Survey 10021074. Welsh Government.

Legend

Please refer to separate legend sheet.

Title

Environmental Overview

Page 6 of 8

Drawing Number

Appendix A of WG 1.7.3

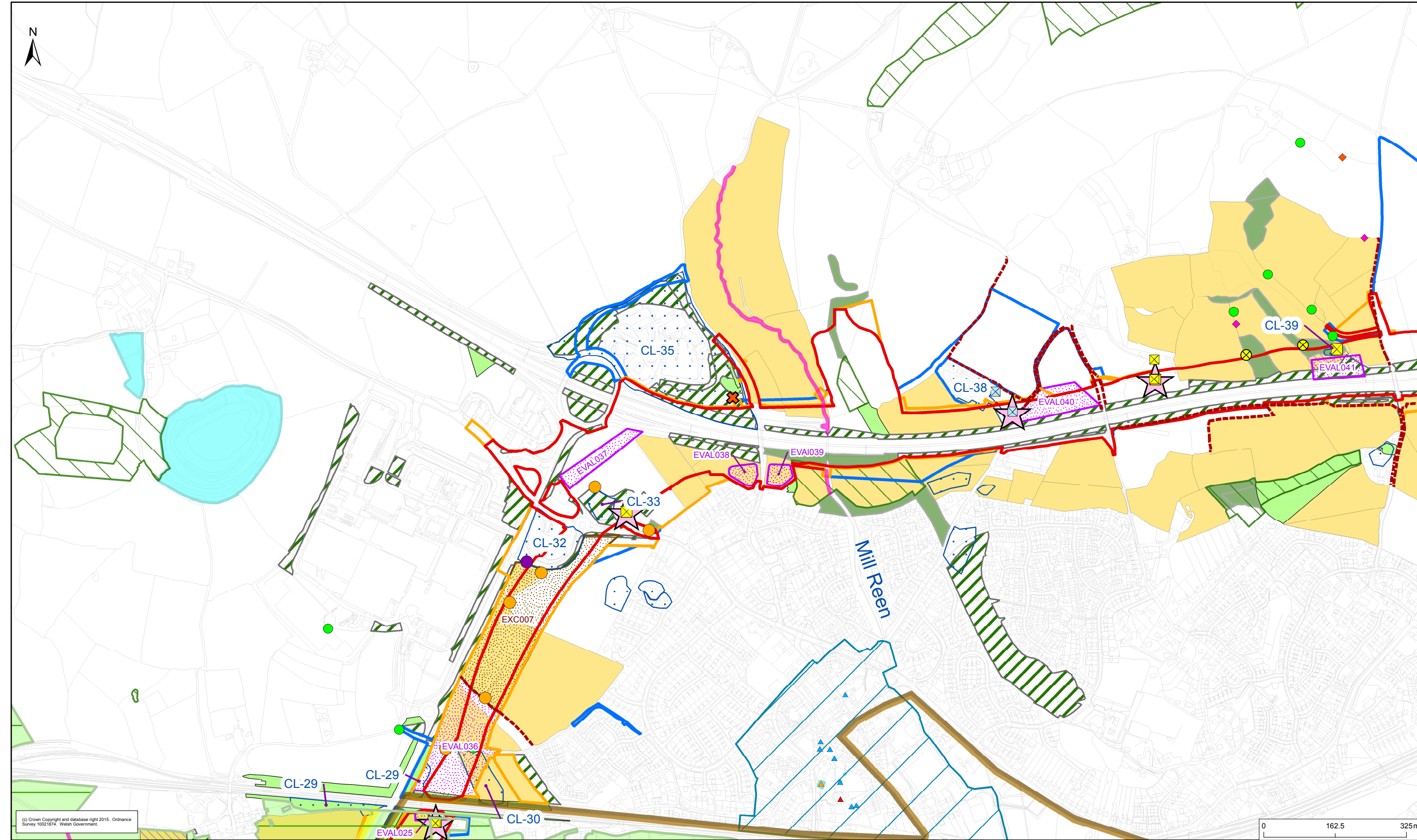
Rev

-



| | | | | | |
|---------|-------------|------------|----------|---------------|--------|
| Status | AT ISSUE | Drawn By | MS | PM/Checked By | PI |
| Job Ref | OXF9458 | Scale @ A3 | 1:10,000 | Date Created | JAN 16 |
| Rev | Description | Date | Initial | Checked | |

OXF8235-0629-10



Legend

Please refer to separate legend sheet.


Llywodraeth Cymru
Welsh Government

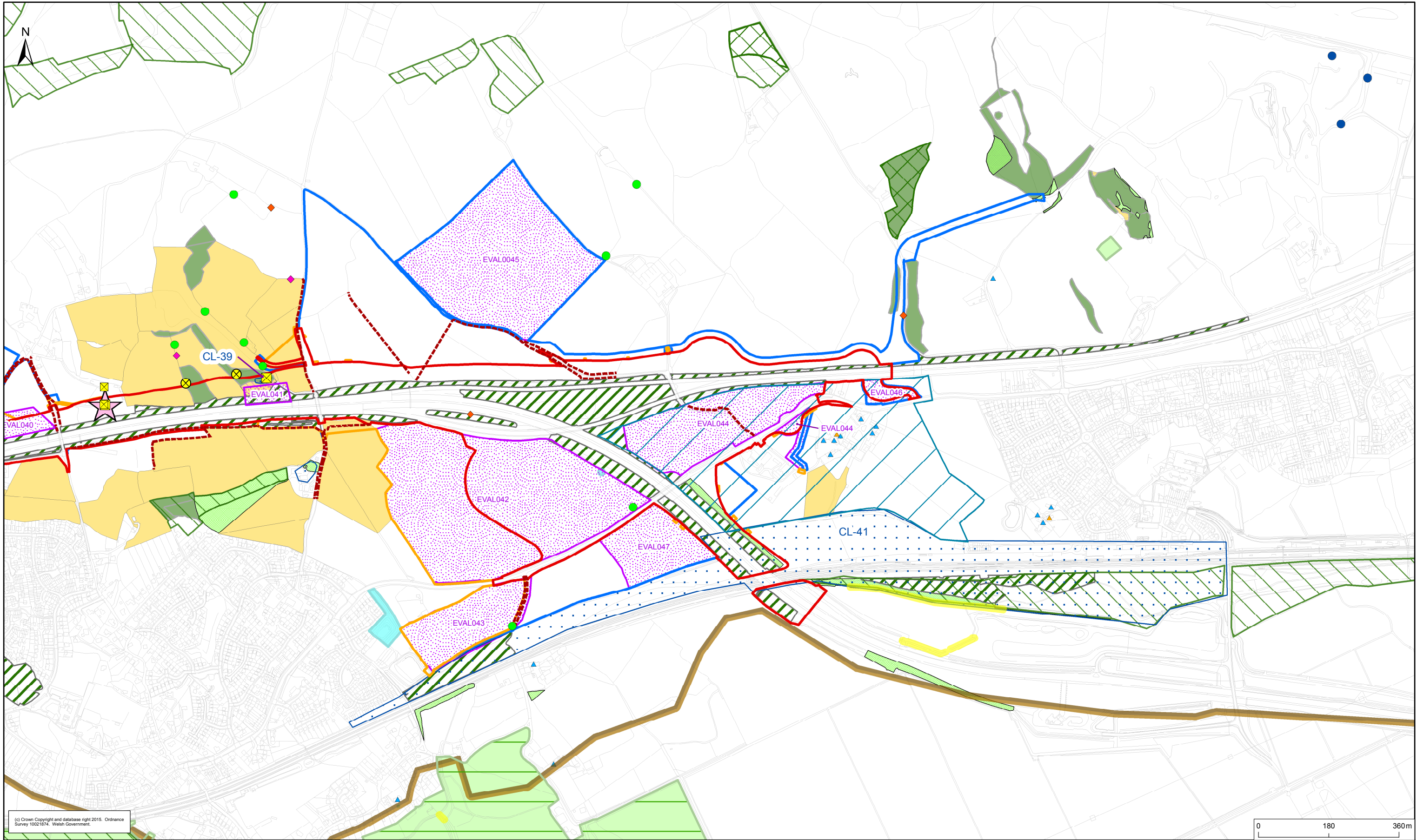
Title
Environmental Overview
Page 7 of 8

Drawing Number
Appendix A of WG 1.7.3


Rev
-

| | | | | |
|--------------------|-----------------------|------------------------|---------|---------|
| Status AT ISSUE | Drawn By MS | PM/Checked By PI | | |
| Job Ref OXF9458 | Scale @ A3 1:8,000 | Date Created JAN 16 | | |
| Rev | Description | Date | Initial | Checked |

OXF8235-0629-10



Legend
Please refer to separate legend sheet.



Llywodraeth Cymru
Welsh Government

Title
Environmental Overview
Page 8 of 8

Drawing Number
Appendix A of WG 1.7.3

Rev
-

| | | | | |
|--------------------|-----------------------|------------------------|---------|---------|
| Status AT ISSUE | Drawn By MS | PM/Checked By PI | | |
| Job Ref OXF9458 | Scale @ A3 1:9,000 | Date Created JAN 16 | | |
| | | | | |
| | | | | |
| Rev | Description | Date | Initial | Checked |

OXF8235-0629-10

Appendix B**List of Meetings on Environmental Matters**

| Date | Consultee | Meeting |
|-------------|-------------------------------|---|
| 09/04/15 | NRW | Monthly Liaison Meeting #1 |
| 15/04/15 | NRW | Drainage Design Strategy (Water Quality #1) |
| 28/04/15 | NRW | Introductory Meeting |
| 06/05/15 | MCC | Co-ordination Meeting |
| 06/05/15 | NCC | Co-ordination Meeting |
| 11/05/15 | ELG | Environmental Liaison Group (ELG) Meeting |
| 12/05/15 | NRW | Monthly Liaison Meeting #2 |
| 13/05/15 | NRW | Great Crested Newt Survey & Bat Survey Meeting |
| 20/05/15 | Archaeological Advisory Panel | Meeting between Mick Rawlings and Dr Martin Bates |
| 20/05/15 | WG ENSR | Agricultural Land Classification |
| 01/06/15 | Sustrans | Co-ordination Meeting |
| 02/06/15 | BHS | Equestrian Routes Meeting |
| 04/06/15 | MCC | Landscape Meeting |
| 09/06/15 | NRW | Monthly Liaison Meeting #3 |
| 09/06/15 | DCfW | Design Commission for Wales Meeting #1 |
| 11/06/15 | NRW | Llanwern Steelworks Remedial Strategy |
| 15/06/15 | Sustrans | Cycle Routes Meeting |
| 17/06/15 | NRW | Landscape & Visual Meeting |
| 22/06/15 | NRW | Reen Mitigation Strategy Initial Discussions |
| 10/07/15 | NRW | Water Treatment Areas Meeting |
| 21/07/15 | NRW | Monthly Liaison Meeting #4 |
| 22/07/15 | MUCC | Green Moor Lane Allotments Meeting |
| 11/08/15 | NRW | Monthly Liaison Meeting #5 |
| 18/08/15 | NRW | Reen Mitigation Strategy Workshop |

| Date | Consultee | Meeting |
|----------|-------------------------------|---|
| 01/09/15 | GGAT | Introductory Meeting |
| 02/09/15 | NRW | Permitting and Licencing Strategy |
| 03/09/15 | Living Levels Project | Introductory Meeting |
| 09/09/15 | NCC | NCC Conservation Officer |
| 10/09/15 | NRW | Liaison Meeting #6 |
| 15/09/15 | MCC | MCC Conservation Officer |
| 17/09/15 | NRW, MCC & NCC | Land Quality |
| 21/09/15 | Archaeological Advisory Panel | Meeting between Mick Rawlings and Prof Stephen Rippon |
| 25/09/15 | National Trust | Tredeger House |
| 30/09/15 | NRW | Protected Species Licence Meeting #1 |
| 13/10/15 | NRW | Monthly Liaison Meeting #7 |
| 22/10/15 | DCfW | Design Commission for Wales Meeting #2 |
| 04/11/15 | ELG | Environmental Liaison Group (ELG) Meeting |
| 07/12/15 | CCC | Design & Landscape Meeting |
| 08/12/15 | NRW | Monthly Liaison Meeting #8 |
| 08/12/15 | WG ESNR | Agricultural Land Classification |
| 09/12/15 | MUCC | Green Moor Lane Allotments Meeting |
| 10/12/15 | NRW | Flood Risk Modelling Meeting |
| 14/12/15 | NRW | Water Framework Directive Scoping (Water Quality #2) |
| 20/01/16 | OSS | Common Land Meeting |
| 25/01/16 | Cadw, NRW, | Historic Landscape |
| 26/01/16 | NRW | Preliminary Design Details for Lagoon Materials |
| 22/01/16 | Archaeological Advisory Panel | Meeting between Mick Rawlings and Prof Martin Bell |
| 24/02/16 | NRW | Monthly Liaison Meeting #9 |

| Date | Consultee | Meeting |
|----------|-------------------------|--|
| 24/02/16 | NRW | Protected Species Licence Meeting #2 |
| 24/02/16 | Tata | Permitting Meeting |
| 28/03/16 | MCC | Landscape Meeting |
| 12/04/16 | NRW | Monthly Liaison Meeting #10 |
| 10/05/16 | NRW | Monthly Liaison Meeting #11 |
| 26/05/16 | Cadw | Historic Environment |
| 14/06/16 | NRW | Monthly Liaison Meeting #12 |
| 20/07/16 | NRW | Tata Remediation Strategy |
| 21/07/16 | NRW | Monthly Liaison Meeting #13 |
| 02/08/16 | MCC | Update Meeting |
| 09/08/16 | NRW | Monthly Liaison Meeting #14 |
| 10/08/16 | Sustrans | Cycle Routes Update Meeting |
| 01/09/16 | MCC | Green Infrastructure & Environment |
| 06/09/16 | NRW | Drainage and Reen Mitigation Strategy |
| 08/09/16 | NCC | Presentation to Members & Officers |
| 08/09/16 | NRW | Protected Species Licence Meeting #3 |
| 13/09/16 | NRW | NMU & Landscape Meeting |
| 13/09/16 | NRW | Monthly Liaison Meeting #15? |
| 21/09/16 | WTW | James Byrne |
| 22/09/16 | NRW | Flood Risk |
| 27/09/16 | NRW/RSPB | Common Crane Conference Call |
| 11/10/16 | NRW | Monthly Liaison Meeting #16? |
| 12/10/16 | GWT | Water Vole Meeting |
| 08/11/16 | NRW | Revised Water Quality Objectives for Gwent Levels (Water Quality #3) |
| 08/11/16 | NRW | Monthly Liaison Meeting #17 |
| 09/11/16 | NRW | Dormouse Mitigation |
| 16/11/16 | MCC | NMU Meeting |
| 22/11/16 | Navigation Stakeholders | Navigation Risk Assessment |

| Date | Consultee | Meeting |
|----------|-----------|-----------------------------------|
| 28/11/16 | NRW | Gwent Levels Buildability Seminar |
| 13/12/16 | NRW | Monthly Liaison Meeting #18 |
| 14/12/16 | MCC & NCC | Presentation to EHOs |
| 20/12/16 | NRW | Water Quality Meeting #4 |
| 18/01/17 | PTES | Dormouse |
| 18/01/17 | RSPB | Birds |

Abbreviations:

| | |
|---------|---|
| CCC | Cardiff City Council |
| DCfW | Design Commission for Wales |
| ELG | Environmental Liaison Group |
| GWT | Gwent Wildlife Trust |
| MCC | Monmouthshire County Council |
| MUCC | Magor & Undy Community Council |
| NCC | Newport City Council |
| OSS | Open Spaces Society |
| PTES | People's Trust for Endangered Species |
| RSPB | Royal Society for the Protection of Birds |
| NRW | Natural Resources Wales |
| WG ESNR | Welsh Government: Environment - Land Nature & Forestry |
| WTW | Wildlife Trust Wales |