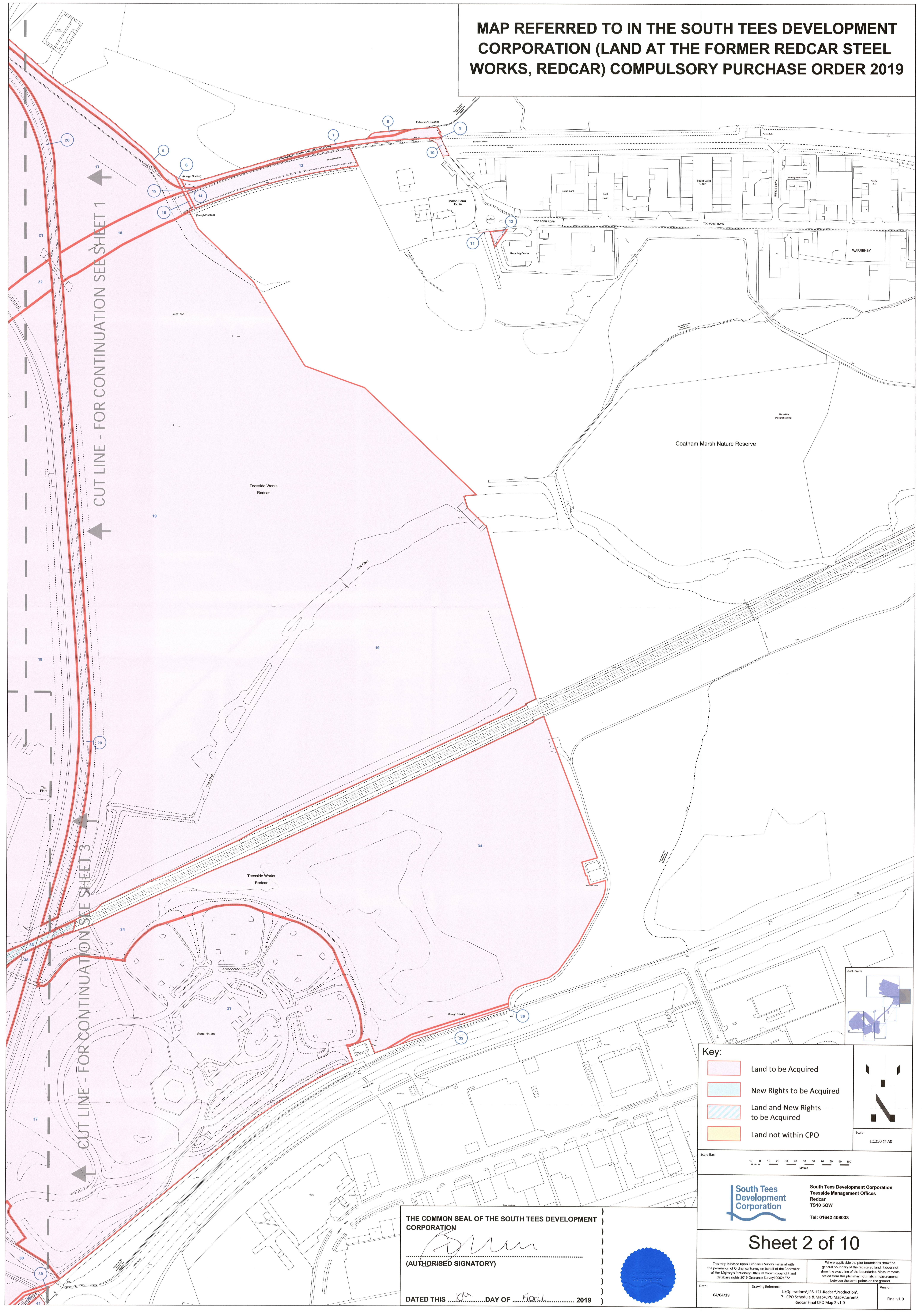


MAP REFERRED TO IN THE SOUTH TEES DEVELOPMENT CORPORATION (LAND AT THE FORMER REDCAR STEEL WORKS, REDCAR) COMPULSORY PURCHASE ORDER 2019

CUT LINE - FOR CONTINUATION SEE SHEET 1

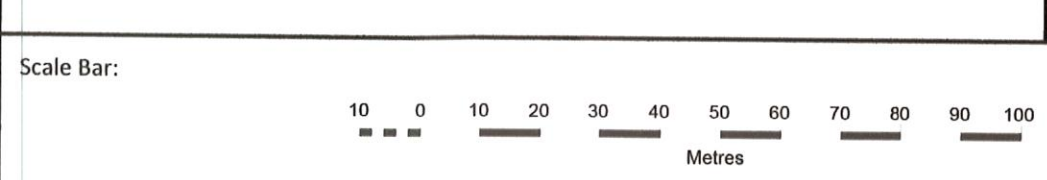
CUT LINE - FOR CONTINUATION SEE SHEET 3



Key:

- Land to be Acquired
- New Rights to be Acquired
- Land and New Rights to be Acquired
- Land not within CPO

Scale: 1:1250 @ A0



South Tees Development Corporation
Teesside Management Offices
Redcar
TS10 5QW
Tel: 01642 408033

Sheet 2 of 10

This map is based upon Ordnance Survey material with the permission of Ordnance Survey on behalf of the Controller of Her Majesty's Stationery Office. © Crown copyright and database rights 2019 Ordnance Survey 100024272.

Where applicable the plot boundaries show the general boundary of the registered land; it does not show the exact line of the boundaries. Measurements scaled from this plan may not match measurements between the same points on the ground.

Date:	04/04/19	Drawing Reference:	L:\Operations\URS-121-Redcar\Production\7 - CPO Schedule & Map\CPO Map\Current\Redcar Final CPO Map 2 v1.0	Version:	Final v1.0
-------	----------	--------------------	--	----------	------------

THE COMMON SEAL OF THE SOUTH TEES DEVELOPMENT CORPORATION

(AUTHORISED SIGNATORY)

DATED THIS 10th DAY OF April 2019

