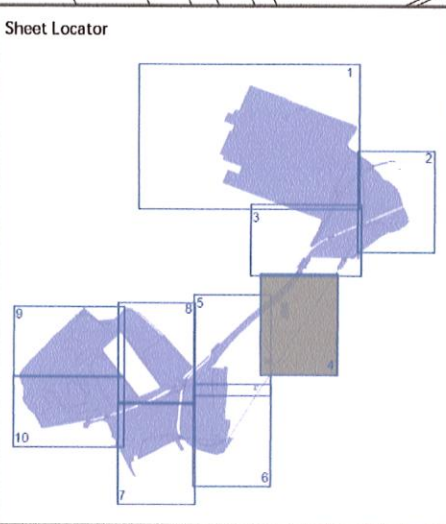


Teesside Works
Lackenby

CUT LINE - FOR CONTINUATION SEE SHEET 5

MAP REFERRED TO IN THE SOUTH TEES DEVELOPMENT CORPORATION (LAND AT THE FORMER REDCAR STEEL WORKS, REDCAR) COMPULSORY PURCHASE ORDER 2019



Key:

- Land to be Acquired
- New Rights to be Acquired
- Land and New Rights to be Acquired
- Land not within CPO

Scale: 1:1250 @ A0



South Tees Development Corporation
Teesside Management Offices
Redcar
TS10 5QW
Tel: 01642 408033

Sheet 4 of 10

This map is based upon Ordnance Survey material with the permission of Ordnance Survey on behalf of the Controller of Her Majesty's Stationery Office © Crown copyright and database rights 2019 Ordnance Survey 100024272		Where applicable the plot boundaries show the general boundary of the registered land, it does not show the exact line of the boundaries. Measurements scaled from this plan may not match measurements between the same points on the ground.	
Date: 04/04/19	Drawing Reference: L:\Operations\URS-121-Redcar\Production\7 - CPO Schedule & Map\CPO Map\Current\Redcar Final CPO Map 4 v1.0	Version: Final v1.0	

THE COMMON SEAL OF THE SOUTH TEES DEVELOPMENT CORPORATION

(AUTHORISED SIGNATORY)

DATED THIS 10th DAY OF April 2019