

APPENDICES

PROOF OF EVIDENCE – S22 Weatherby

Appendix 1 – West Suffolk Strategic Plan 2014-2016



Appendix 1 – West Suffolk Strategic Plan 2014-2016

Pg 9

Our vision:

"Working together, Forest Heath and St Edmundsbury councils will support communities to create the best possible future for people in West Suffolk."

In practice, this will mean focusing our efforts and resources in those areas which are the biggest priorities for West Suffolk over the next two years.

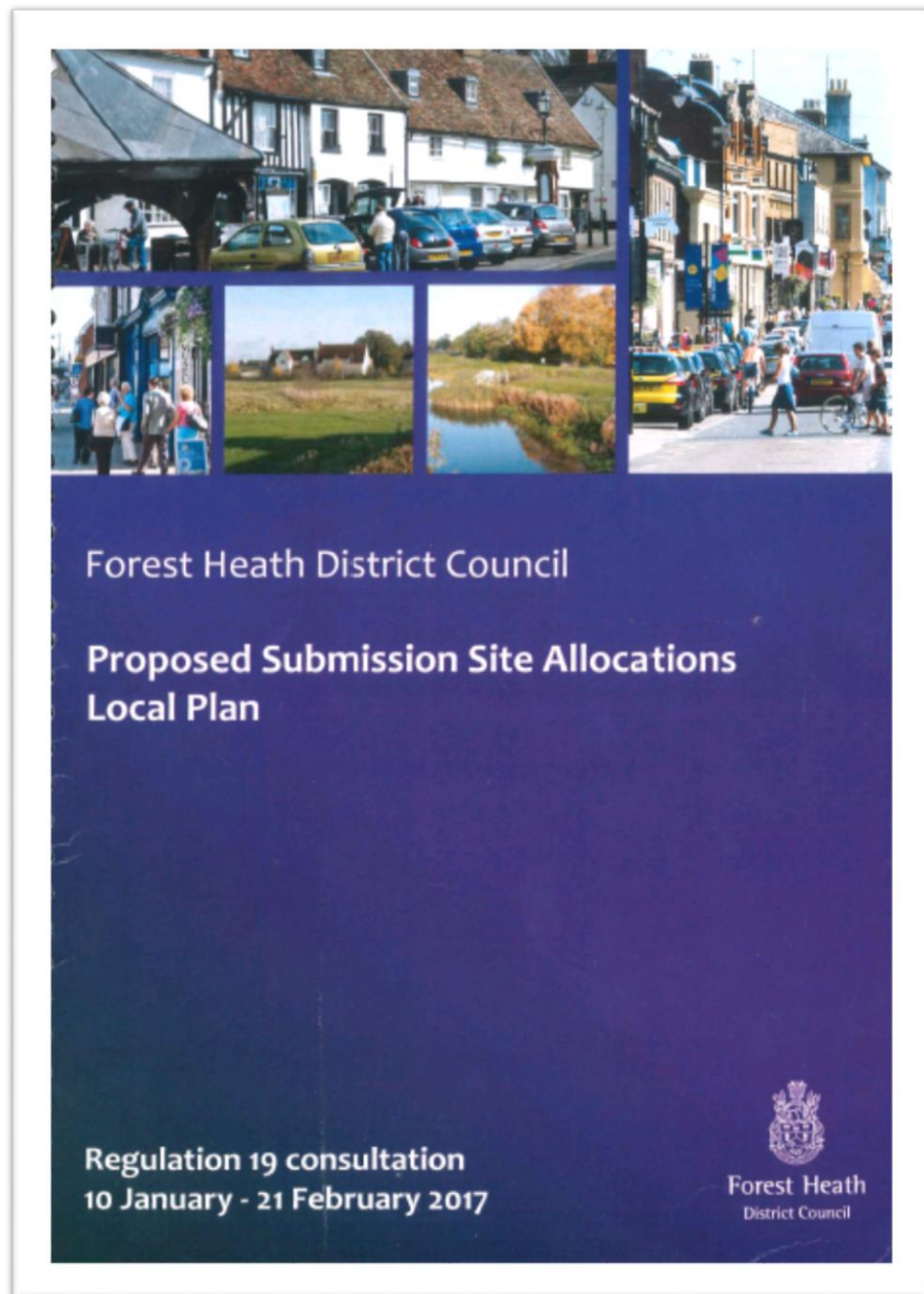
Our priorities

Priority 1: Increased opportunities for economic growth

Priority 2: Resilient families and communities that are healthy and active

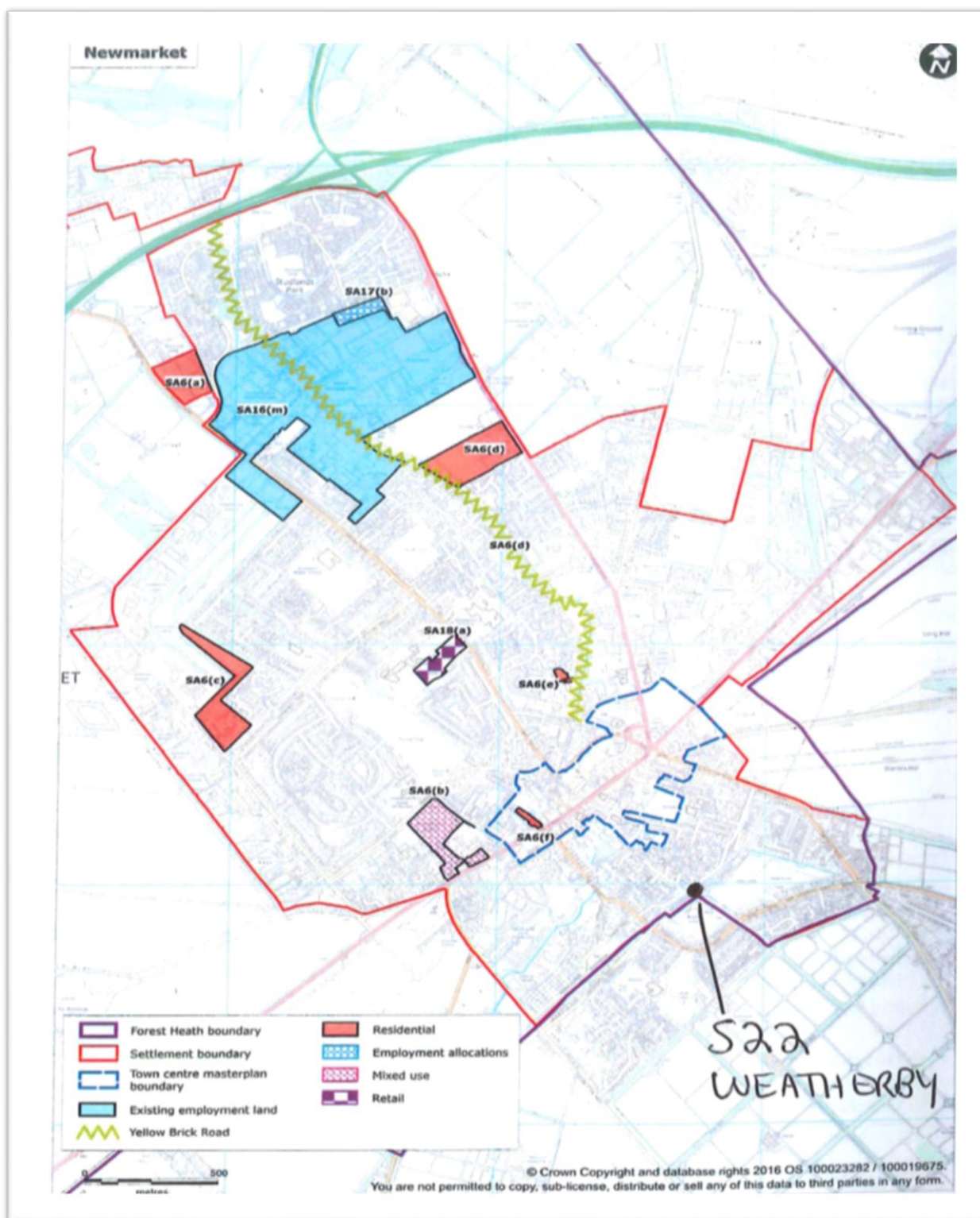
Priority 3: Homes for our communities

Appendix 2 – FHDC Proposed Submission Site Allocations Local Plan



Appendix 2 – FHDC Proposed Submission Site Allocations Local Plan

Pg 40, Newmarket Site Allocations Map (amended to show location of S22 Weatherby)



Appendix 2 – FHDC Proposed Submission Site Allocations Local Plan

Pg 36

5.6 Newmarket

The local area



5.6.1 Newmarket is defined as a market town in the Core Strategy (Policy CS1) and is Forest Heath's largest settlement. The town has a population of approximately 16,615 (2011 Census) and is located south of the A14, some 11 miles west of Bury St Edmunds and 10 miles east of Cambridge. Newmarket is considered to be one of the more sustainable locations for new development within the district because of the range of services and facilities available within the town and because of its good transport links, although growth is constrained as outlined below. Newmarket town centre serves the retail and leisure needs of the local catchment area.

5.6.5 Newmarket's High Street runs for one mile from the Jubilee Clock Tower to the Cooper Memorial Fountain. The High Street and its surrounding streets contain Newmarket's historic core, the main shopping area (including a twice weekly outdoor market and the Guineas Shopping Centre), training stables and visitor attractions including the National Heritage Centre for Horseracing and Sporting Art.

Pg 37 Section 5.6.8

- community and leisure facilities include a library, the Memorial Hall, Kings Theatre and Studlands Park Community Centre;
- the town has five primary schools with capacity for 1,155 pupils and an upper school with capacity for 922 pupils. There is sufficient capacity to accommodate planned growth within the town's primary schools/school sites;
- Newmarket has an air quality management area (AQMA) centred on the High Street from the clock tower to the junction with The Avenue. The impact of any future growth on air quality needs to be considered;

Appendix 3 – East West Rail Website – Central Section (Sandy to Cambridge)

www.eastwestrail.org.uk/2017/11/22/consortium-delight-budget-announcement/

East West Rail

Search

About News Contact FAQ Newsletter Nostalgia Tourism Community

Twitter Facebook

Western Section
Western Section Information Sheets
Central Section Overview
Eastern Section

You are here: [Home](#) » Central Section Overview

Central Section Overview

Network Rail

East West Rail Central Section – Preferred Corridor

To the Midlands and Yorkshire
Midland Main Line

To the North East, Yorkshire and Scotland
East Coast Main Line

To Norwich
East West Rail Eastern Section

To Ipswich
East West Rail Eastern Section

To London St Pancras International

To London King's Cross

To London Liverpool Street
West Anglia Main Line

To Bletchley, Banbury and Oxford
East West Rail Western Section

Chatterbox Rail

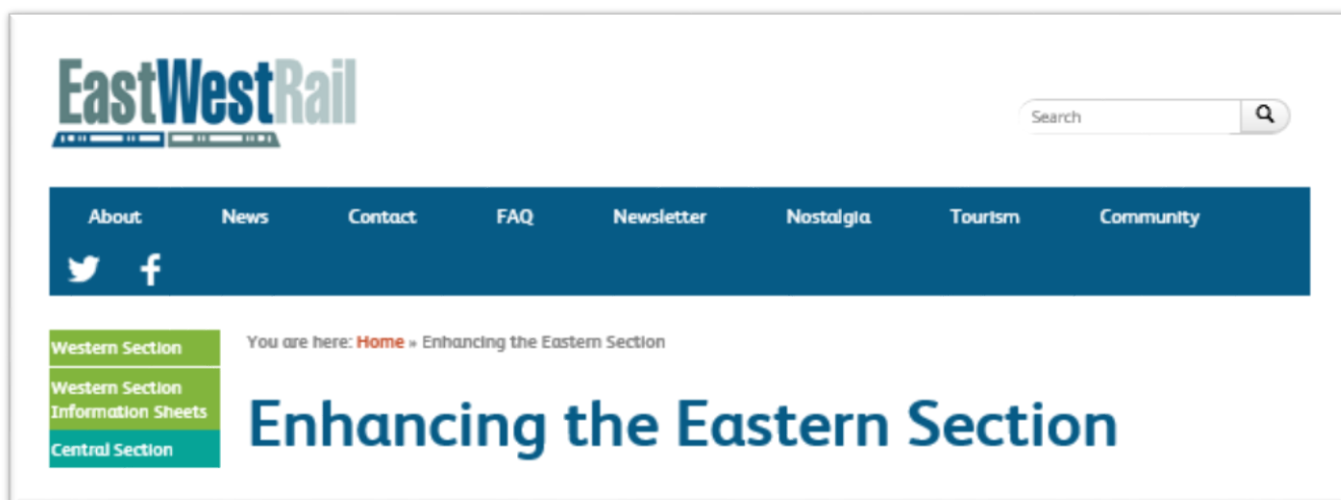
When will it open?

Illustrative plans show construction starting in the mid 2020s, with trains operating on the new railway by the early 2030s. This is subject to a number of constraints including there being a case for investment, a successful application for development consent powers and the availability of funding.

The scheme is also being considered as part of a wider study being undertaken by the National Infrastructure Commission on the Oxford – Milton Keynes – Cambridge corridor.

Appendix 4 – East West Rail Website – Eastern Section (Cambridge to Ipswich & Cambridge to Norwich)

www.eastwestrail.org.uk/enhancing-eastern-section/

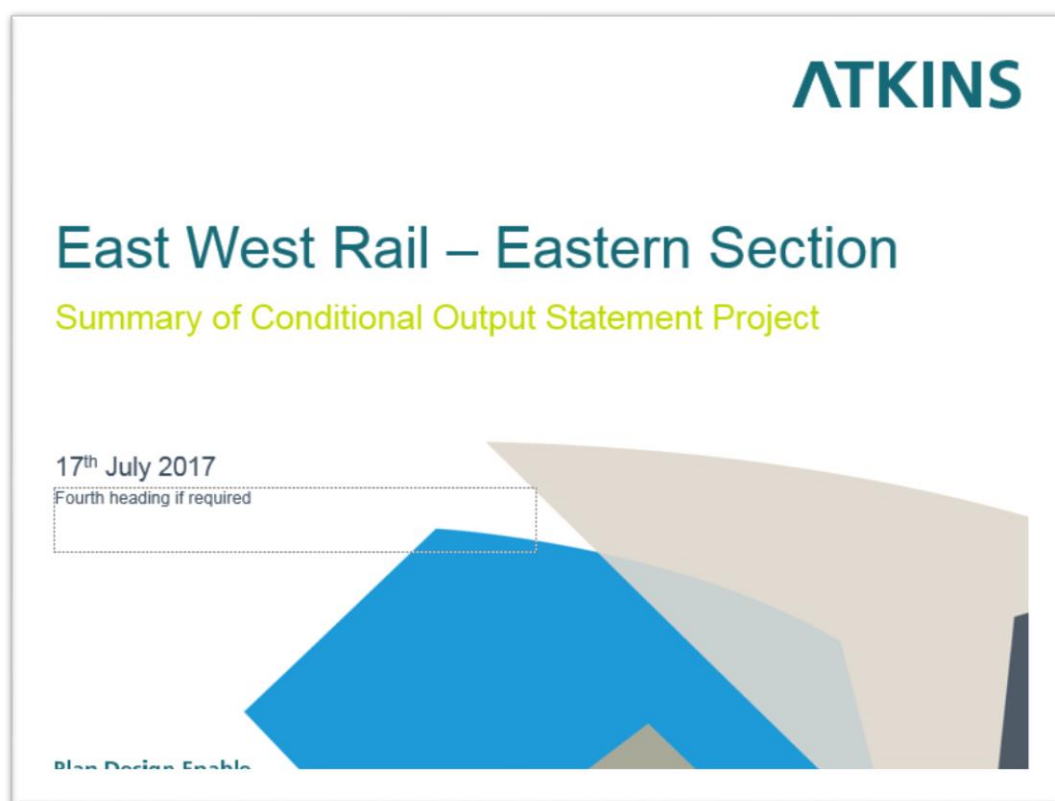


Further reading

[Full report](#)

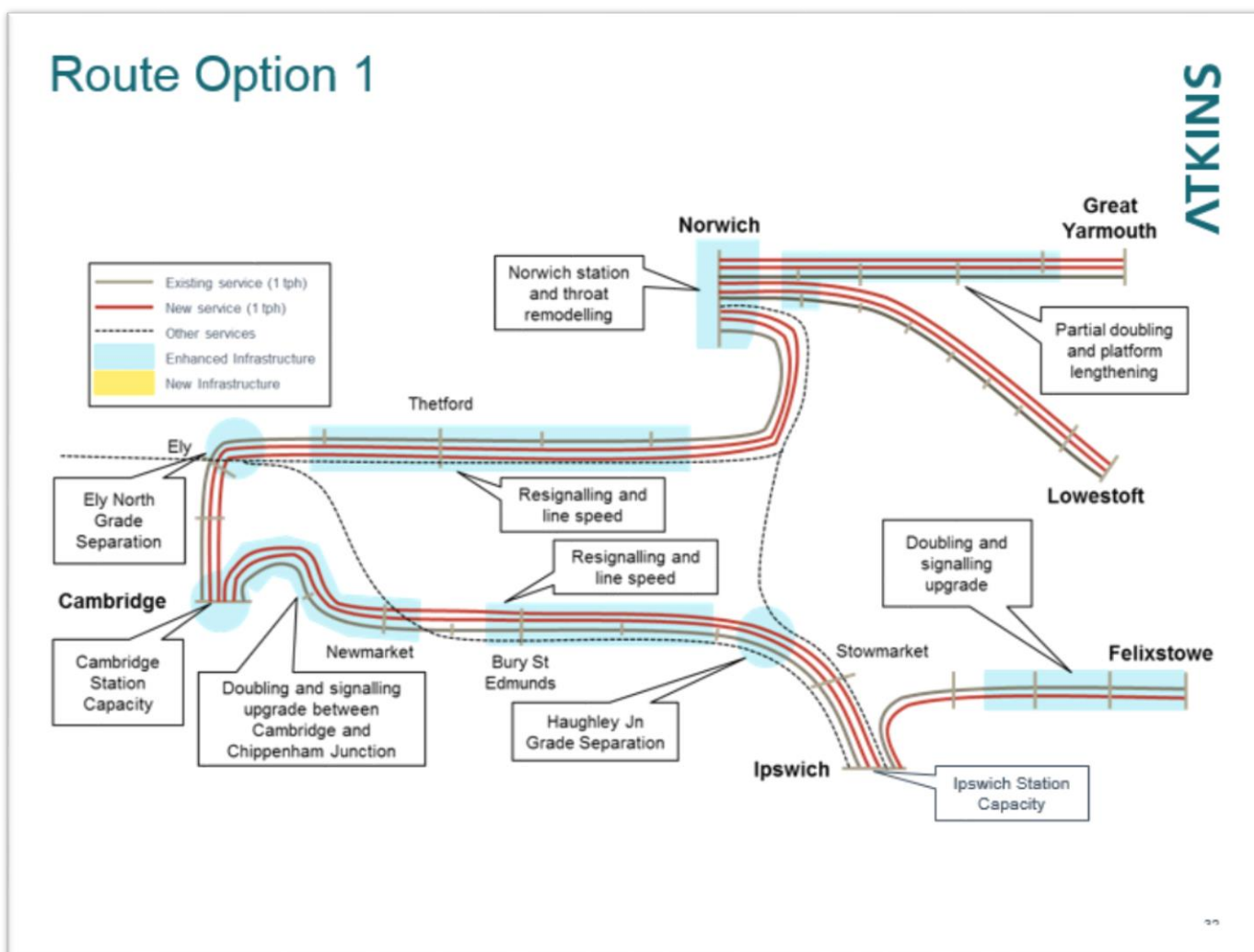
[Summary document](#)

Page published on August 11, 2017



Appendix 4 – East West Rail Website – Eastern Section (Cambridge to Ipswich & Cambridge to Norwich)

Pg 32



Appendix 5 – Press Articles

<http://www.cambridge-news.co.uk/news/local-news/newmarket-weatherby-level-crossing-closure-12953112>

<https://www.newmarketjournal.co.uk/news/no-reprieve-for-newmarket-rail-crossing-1-7890725>

<https://www.newmarketjournal.co.uk/news/gates-look-set-to-close-on-much-used-newmarket-rail-crossing-1-7697958>

<http://www.cambridge-news.co.uk/news/local-news/newmarket-residents-petition-against-weatherby-12251942>

<http://www.cambridge-news.co.uk/news/local-news/locals-attend-rally-newmarket-crossing-12334784>

<https://www.newmarketjournal.co.uk/news/newmarket-town-joins-fight-to-keep-rail-crossing-open-1-7627050>

<http://www.eadt.co.uk/news/matt-hancock-writes-to-rail-minister-in-last-ditch-bid-to-block-newmarket-level-crossing-closure-1-4968863>

Appendix 6 – Online Petition to keep Weatherby level crossing open

www.change.org/p/network-rail-network-rail-keep-the-weatherby-level-crossing-in-newmarket-open

[Start a petition](#)
[Browse](#)
[Subscription](#)

[Log in](#)

Petition Closed

Petitioning [Network Rail](#)

Keep the Weatherby Level Crossing in Newmarket Open.

David Bagnall
 Newmarket, United Kingdom

Network Rail want to close the Weatherby Level Crossing in Newmarket.

Petition Closed

410 supporters

90 needed to reach 500

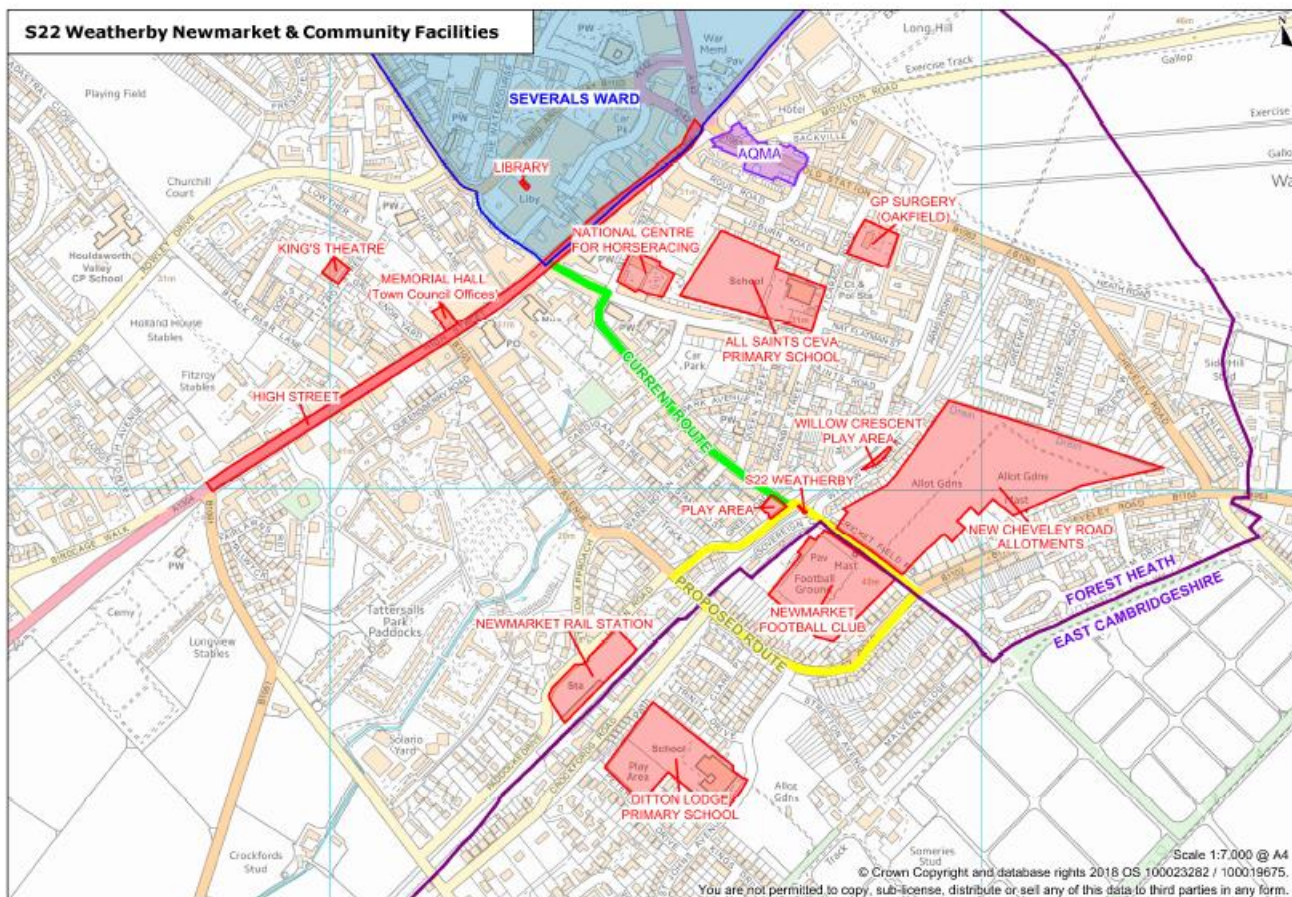
Share on Facebook

Add a personal message (optional)

Post to Facebook

Send a Facebook message

Appendix 7 – Map



Appendix 8 – Newmarket Air Quality Monitoring Area Order (2017 variation)

Environment Act 1995 Part IV Section 83(1)

Forest Heath District Council

Newmarket AQMA Order (2017 Variation)

Forest Heath District Council, in exercise of the powers conferred upon it by Section 83(1) of the Environment Act 1995, hereby makes the following Order.

This Order may be cited as the Forest Heath District Council Newmarket Air Quality Management Area (2017 Variation), and shall come into effect on 18 April 2017. This Order varies the Forest Heath District Council Air Quality Management Area, which came into force on the 6 April 2009 by reducing the designated area.

The area shown on the attached map in red is to be designated as an air quality management area. The designated area incorporates Old Station Road from the Clock Tower roundabout to the junction with Rous Road, Newmarket, Suffolk. The map may be viewed at the Council Offices.

This Area is designated in relation to a likely breach of the nitrogen dioxide (annual mean objective) as specified in the Air Quality Regulations (England and Wales) 2000.

This order shall remain in force until it is varied or revoked by a subsequent order.

The Common Seal of Forest Heath)
District Council was hereto affixed)
on April 2017 in the presence of:-)


Authorised Signatory



39155