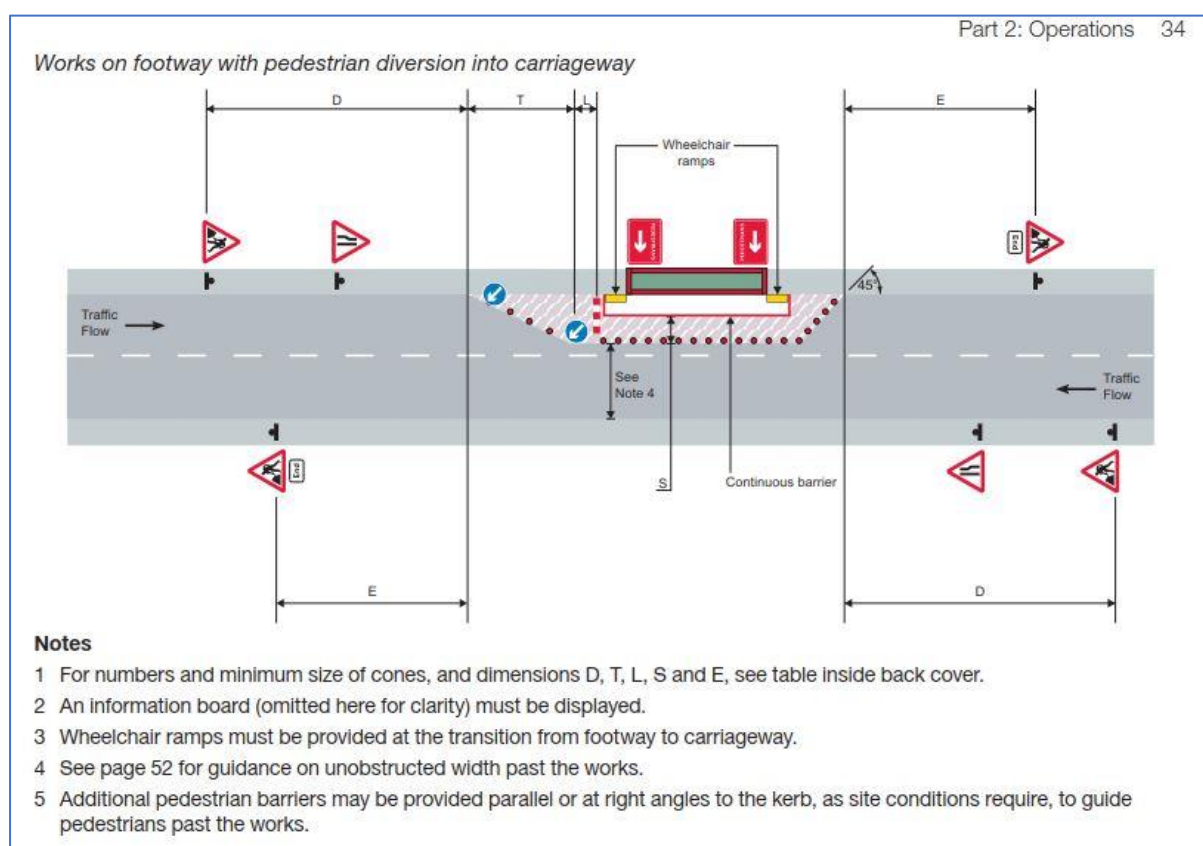


Note on S08 – Documents submitted by Mr Crosby

1. In documentation submitted by Mr Crosby on 02/03/18 during the Suffolk Public Inquiry in relation to S08, an extract was provided entitled "From Safety at Street Works and Road Works".
2. I can confirm that the extract is from a superseded version of the guidance published in 2001.
3. The current guidance which replaced the extract submitted in evidence is known as the 'red book' and titled 'Safety at Streets and Road Works – A Code of Practice' first published in 2013. The current version is the 2nd impression (with amendments) published June 2014.
4. In relation to 'Works on footway with temporary footway in carriageway' as submitted, it is noted that the current guidance contains the detail below from page 34 of the guidance, which has now been entitled 'Works on footway with pedestrian diversion in carriageway':



5. The associated dimensions are shown below (extract from page 105, entitled Setting Out Site) :

Setting out site

(Distances in metres unless stated otherwise, numbers are minimum numbers)

Type of road	D			Lead-in taper							S Minimum width of sideways safety zone	E Distance from last cone to End of works sign	Minimum size of signs (mm)
	Minimum visibility distance to first sign	Distance from first sign to start of lead-in taper		Width of works including sideways safety zone									
				1m	2m	3m	4m	5m	6m	7m			
Single carriageway – speed limit 30 mph or less	60	20 to 45	T Taper length No of cones No of lights	13 4 –	26 4 –	39 6 –	52 7 –	65 9 –	78 10 –	91 12 –	0.5	10 to 30	600
Single carriageway – speed limit 40 mph	60	45 to 110	T Taper length No of cones No of lights	20 4 3	40 6 5	60 8 7	80 10 9	100 13 12	120 15 14	140 17 16	0.5	30 to 45	750
Single carriageway – speed limit 50 mph or more	75	275 to 450	T Taper length No of cones No of lights	25 4 3	50 7 6	75 10 9	100 13 12	125 15 14	150 18 17	175 21 20	1.2	30 to 45	750
All-purpose dual carriageway – speed limit 40 mph or less	60	110 to 275	T Taper length No of cones No of lights	25 4 3	50 7 6	75 10 9	100 13 12	125 15 14	150 18 17	175 21 20	0.5	30 to 45	750

Speed limit mph	20	30	40	50	60	Speed limit mph	30 or less	40 or more
L Longways clearance	0.5	0.5	15	30	60	C Clearance to works vehicle	2	5

Notes

- For roads covered by this Code, the minimum height of cones is 450 mm where the speed limit is 40 mph or less, and 750 mm where the speed limit is 50 mph or more.
- The maximum spacing between cones in longitudinal lengths shall be 9 metres, but no fewer than two cones shall be used in any length between tapers.
- Lead-in tapers where two-way traffic control is used, and all exit tapers shall be at about 45° to the kerb line with cones spaced 1.2 metres apart maximum.
- In certain circumstances on congested roads with speed limits of 30 mph or less, the lead-in taper may be reduced to 45° (see page 19).
- The longways clearance (L) is the distance between the end of the lead-in taper and the first traffic barrier placed across the lane.

- It is noted that the sideways clearance remains at 1.2m in the current version, as highlighted in the bold box in the above table, which is the same as the figures submitted in the superseded documentation provided by Mr Crosby.
- However, in relation to the purpose of this documentation it is specifically in relation to temporary closures of the footway to facilitate road works and no inference should be drawn that sideways clearances are required for normal footways, and no such design guidance exists which stipulates that a sideways safety zone is a requirement for new or existing footways.