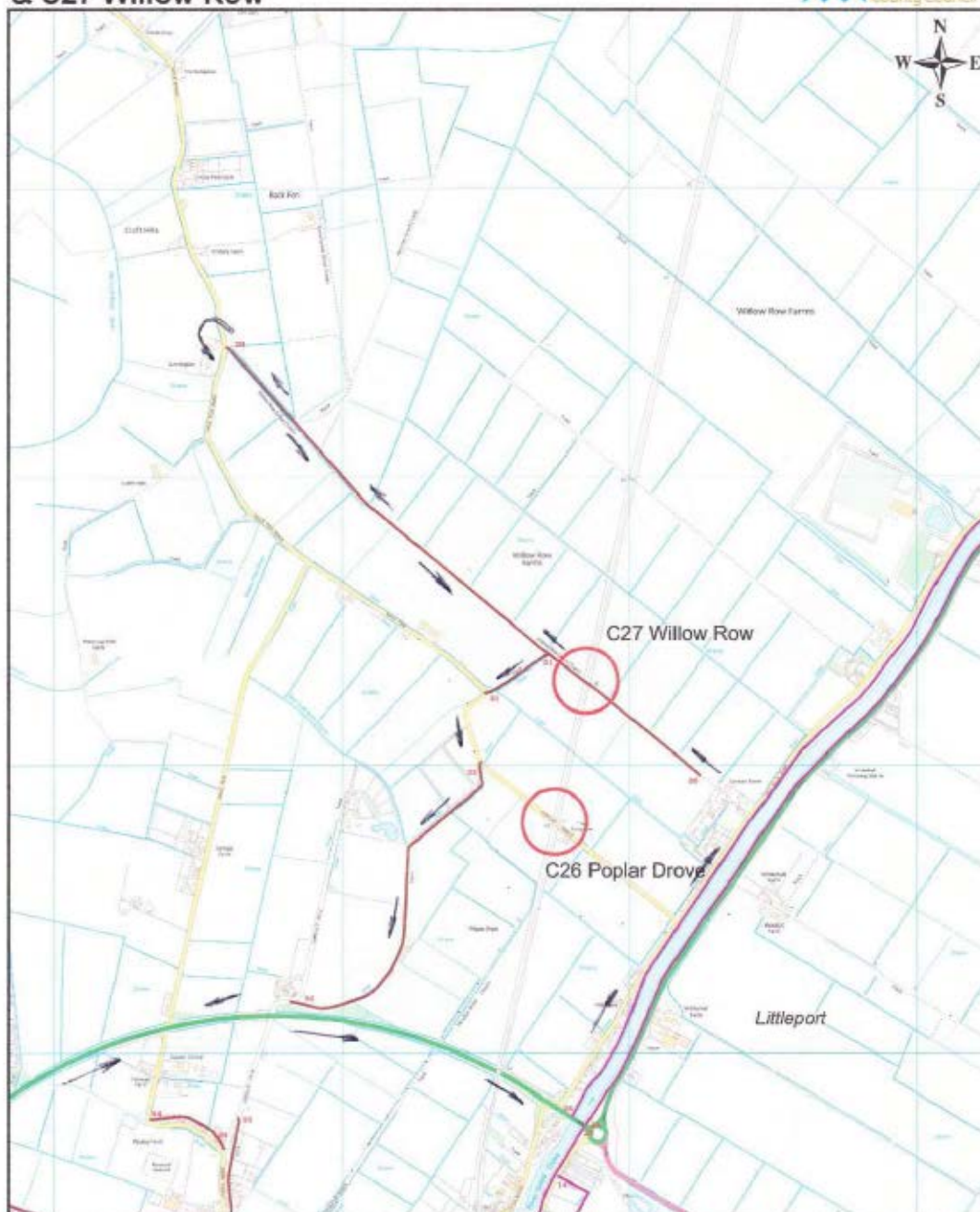


Appendix 1 – Photo showing Cambridge TRF Riders on 19/03/2017



Appendix 2 – Map Showing Route Followed







**Cambridgeshire County Council - C26 Poplar Drive
& C27 Willow Row**



Scale: 1:18,000
Date: 02/10/2017

for B. SAMOS

25.10.17

Key - Drawn from the Definitive Map		Permissive Footpath (red)	
Public Footpath (purple)		Permissive Bridleway (red)	
Public Bridleway (green)			
Byway Open to All Traffic (brown)		Level Crossing	
Parish boundary			

© Crown copyright and database rights 2017 OS 100023205