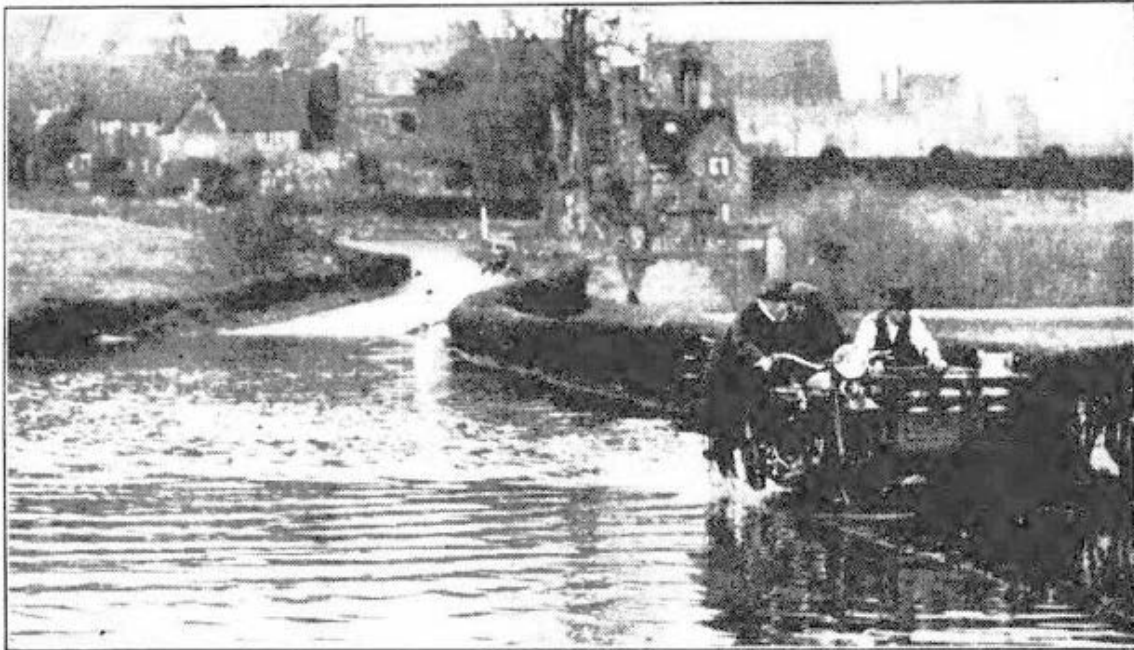


## Appendix A: Photos of historical flood events

*THE COURIER 29 JANUARY 1937*



The recent heavy rains have produced some of the worst floods in Penshurst for 40 years. This is a portion of the road to Bidborough.

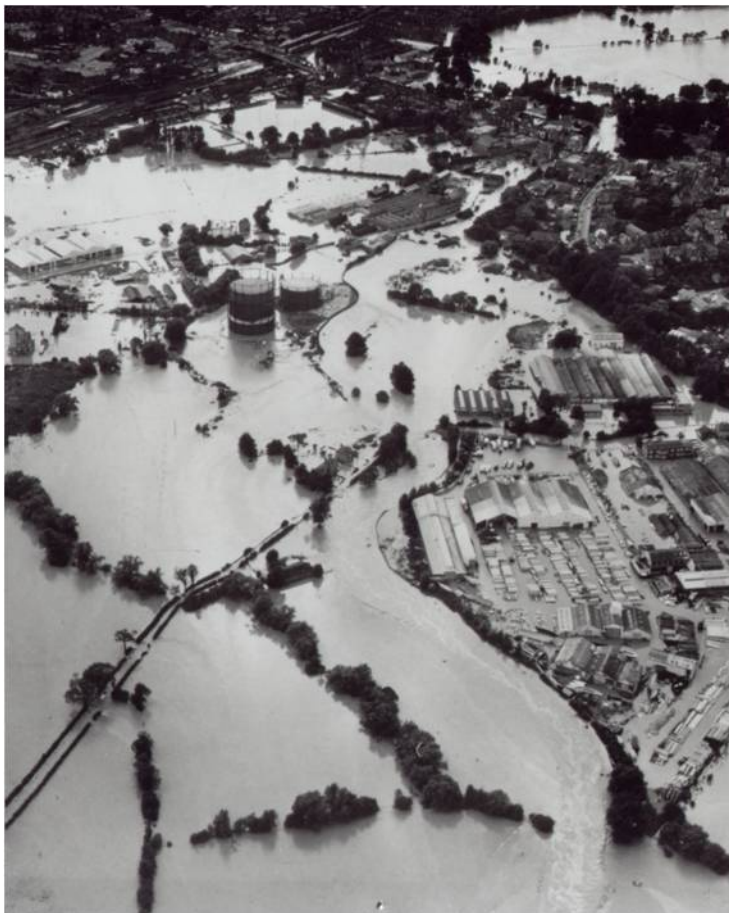
*Above: Flooding of Rogues Hill, 1937*



*Above Tonbridge High Street, September 1968*



*Above Tonbridge High Street, September 1968*



*Left: River Medway,  
Tonbridge 1968*



## Christmas Day 2013



*Above: Elm Grove, Hildenborough. Christmas Day 2013*



*Above: Bramble Close, Hildenborough. Christmas Day 2013*



Appendix A to the proof of Tim Connell



*Above: Burnside, Hildenborough. Christmas Day 2013*



*Above: Barden Road/Avebury Avenue, Tonbridge. Christmas Day 2013*



February 2020



*Above and below: Leigh FSA impounding flood water, 18 February 2020*







*Above: Leigh FSA impounding flood water, 18 February 2020*