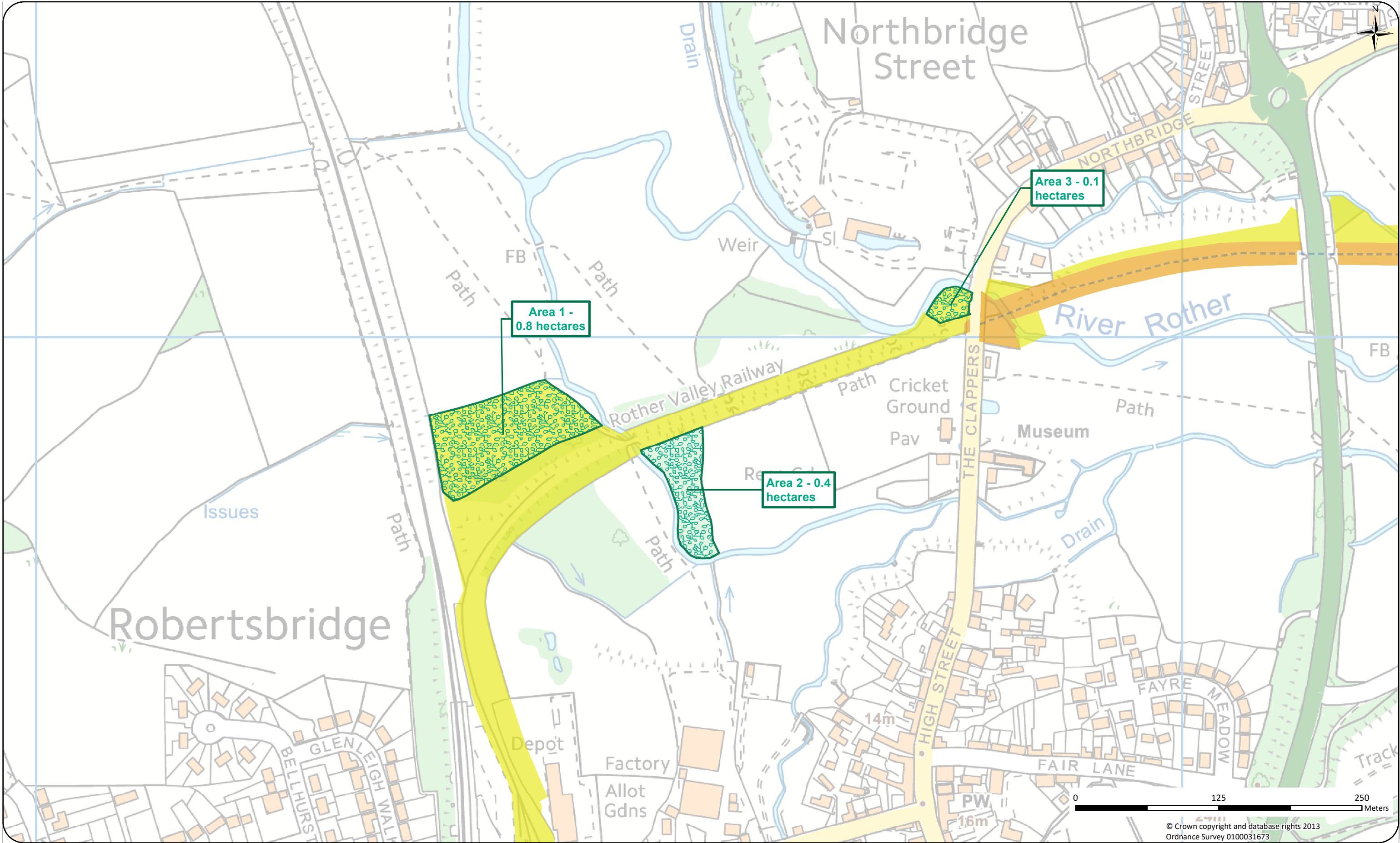


Rother Valley Railway

Note on tree-planting areas

1. Detailed proposals for mitigation tree planting will be worked up in accordance with Condition 5 (ecology management condition) of the planning conditions which requires the extent and type of any new planting to be included in a landscape and ecology management plan and monitoring strategy to be approved by the local planning authority.
2. Figure 8.5 of the RVR ES shows proposed planting along the railway corridor whilst attached to this note are two drawings showing four additional locations within RVR's ownership and control that have also been identified for proposed mitigation tree-planting over and above the railway corridor.
3. It is also RVR's intention to plant trees and scrub habitat on land adjacent to the scheme in the ownership of friendly neighbours, e.g. KESR, the locations and extent of which will be the subject of detailed survey and design work once the Order is made in accordance with the planning condition.

16 July 2021



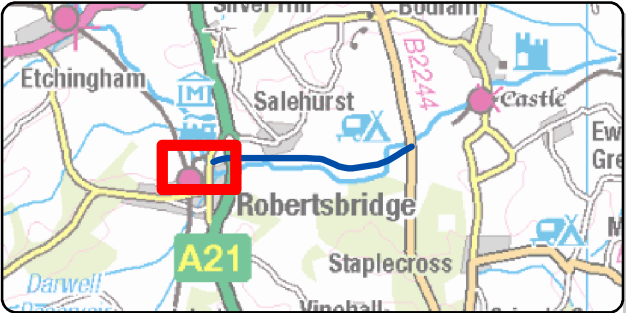
Project: Rother Valley Railway - Public Inquiry
Client: Rother Valley Railway Ltd.

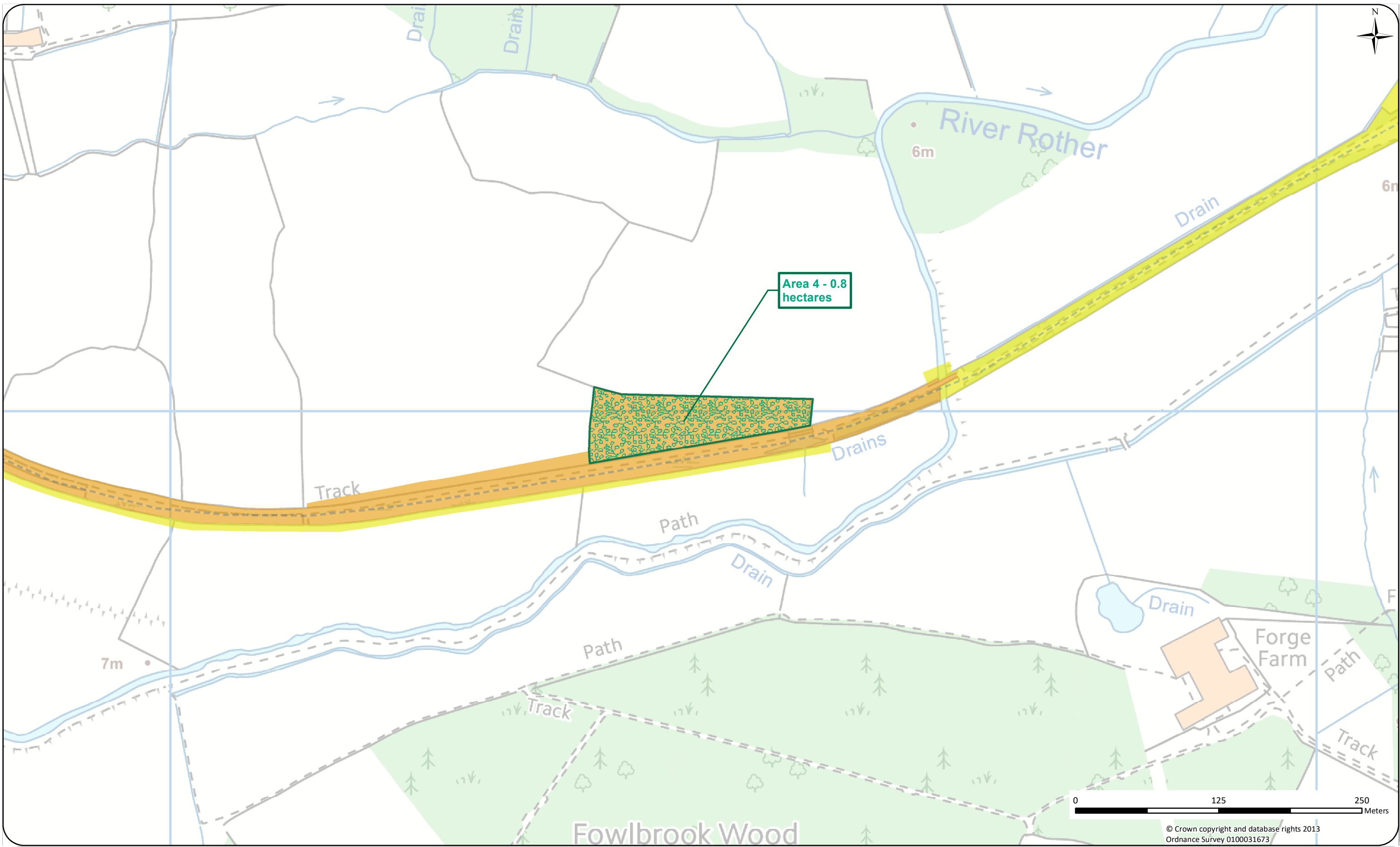
Locations for compensatory planting

Sheet 1 of 2

Legend

- Line of route reinstatement
- Order Plan boundaries
- LOD
- LLAU
- Planting area



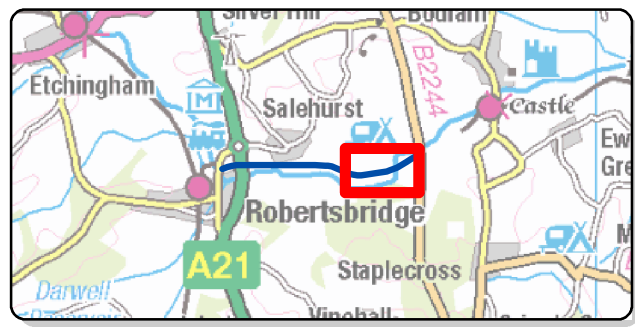


Project: Rother Valley Railway - Public Inquiry
Client: Rother Valley Railway Ltd.

Locations for compensatory planting

Sheet 2 of 2

- Legend**
- Line of route reinstatement
 - Order Plan boundaries
 - LOD
 - LLAU
 - Planting area



Document Path: S:\GIS\02Projects\T4689_RotherValleyRailwayPublicInquiry\T4689_MitigationPlanting_106.mxd | User Name: joseph.towns | Date: 15/07/2021