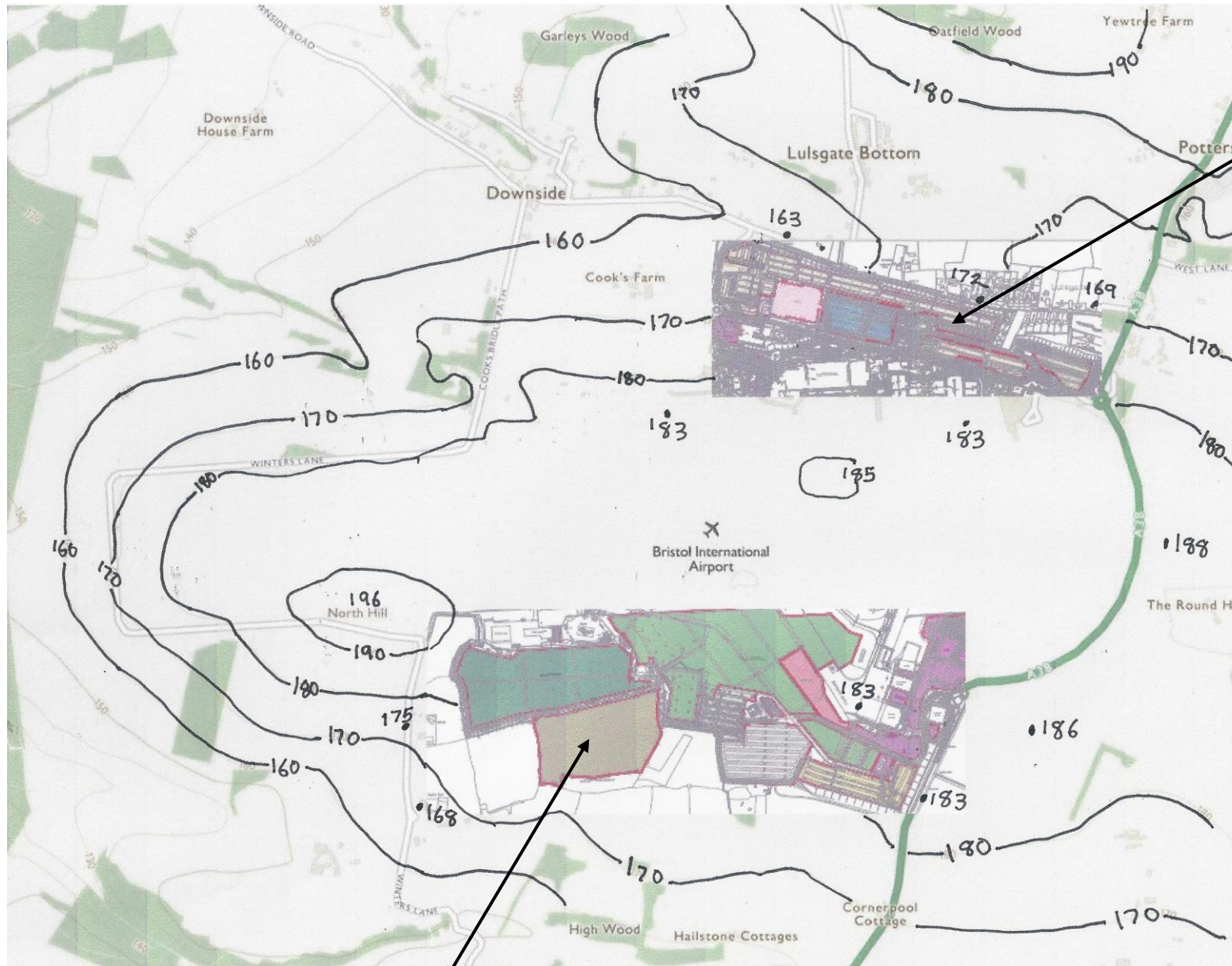


Sketch to show levels at Bristol Airport in relation to actual and proposed car parking developments.



Long stay parking – potential for decked parking simple two levels – approx. height 4.4m

Sources of level information:
 Ordnance Survey base for contours and some spot heights;
 BAL Parking maps for spot heights.

Proposed Silver Zone Extension – approx. height 2m

Submitted by XR Elders for clarification of Melling rebuttal Proof [BAL/W7/3]: Technical note
 Alternative Car Parking Options: Landscape and Visual Comparative Study Figures 1 and 2.