

Transforming Huddersfield Bus Station

Overview of the project

Huddersfield Bus Station is a key transport hub in Kirklees providing connections within the local area and across the region, via public transport. It is one of the busiest bus stations in West Yorkshire, with over 37,000 users per day on average in 2018-19, and serves as a key transport hub connecting Huddersfield with the surrounding area and the wider region.

Responses to the 'Huddersfield Blueprint' public consultation in 2019 revealed people's concerns about the appearance and accessibility of the bus station. Some parts of the bus station are dated and need modernising to improve its appearance and the facilities for people living, working in and visiting Huddersfield.

Scheme aims

To encourage more people to use public transport in Huddersfield and the wider region, the proposals aim to:

- Provide an **enhanced customer experience** for Huddersfield Bus Station users by upgrading facilities and improving user safety.
- Transform the interior and exterior spaces of the bus station to make it a **modern and attractive gateway to Huddersfield**.
- Make the bus station a **more energy efficient and environmentally friendly** facility to help tackle the climate emergency.
- Improve the access routes to the bus station to make walking and crossing roads **easier and safer** for people.
- Make the bus station a more secure facility, to **improve personal safety** and encourage more people to travel by bus.



Main entrance of Huddersfield Bus Station including shop frontages



Artist impression of proposed entrance canopy and retail units at Huddersfield Bus Station



View of concourse and internal shop frontages at Huddersfield Bus Station

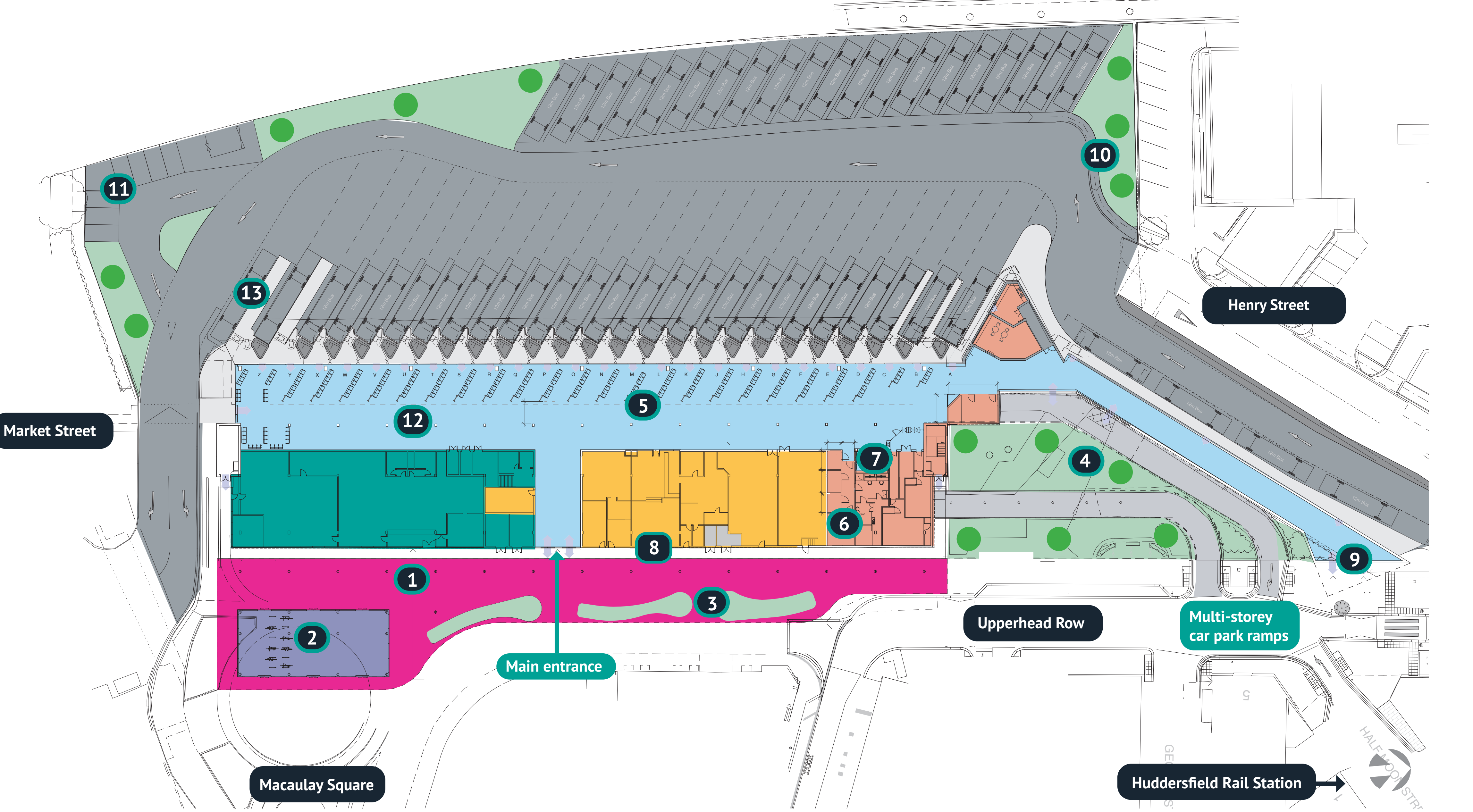


Artist impression of the proposed reorganised interior with improved flooring, seating and signage

Transforming Huddersfield Bus Station

Proposed improvements to Bus Station

- 1 A new canopy at the main entrance will provide shelter and additional waiting space
- 2 Increased bike parking, including sheltered storage in a new cycle hub
- 3 New planters with seating under the new entrance canopy
- 4 Better landscaping and more greenery, including in the public area under the car park ramps
- 5 Upgrades to features such as seating, flooring and signage
- 6 A fully accessible 'Changing Places' toilet, better baby change and disabled toilets
- 7 Upgraded and modernised travel centre
- 8 Improved shop fronts and appearance of the bus station
- 9 The enlarged Henry Street entrance will include a new canopy and increased natural light
- 10 The bus area layout will be made safer for staff
- 11 Environmentally friendly improvements could include solar panels, a green roof and staff electric vehicle charging
- 12 Improved wayfinding and more space for people with accessibility requirements
- 13 Coach bays relocated to the opposite end of the bus station to reduce congestion



Key

Planted landscaping	Units for potential retail or health facility
Bus area	Public and staff facilities
Bus station concourse	Retail units
Cycle parking	Main entrance canopy

Delivered in partnership by:



Funded by:









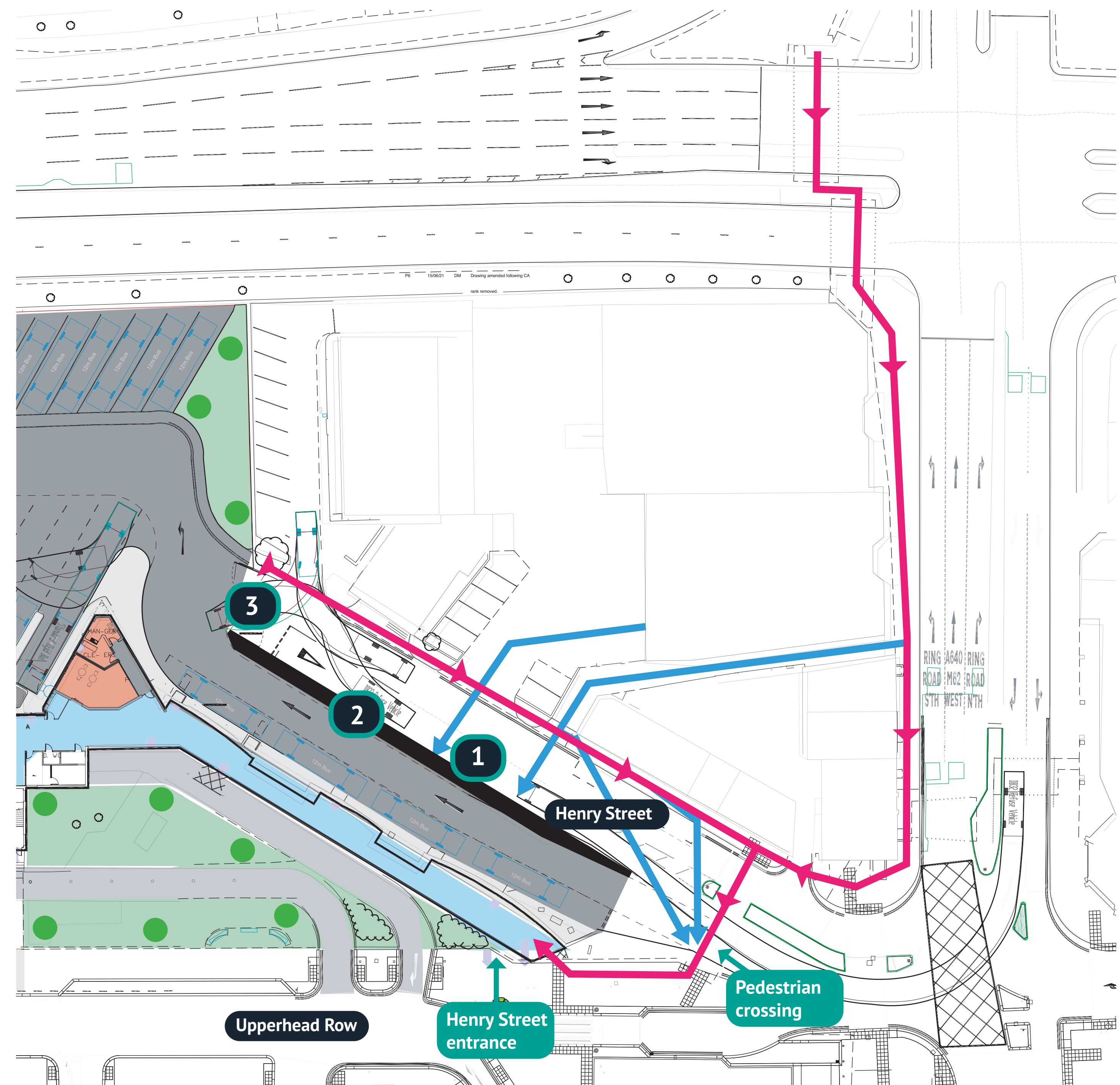
Transforming Huddersfield Bus Station

Proposed improvements to Henry Street

- 1** All bus traffic will be separated from private road traffic on Henry Street. The existing barrier will be extended to the north and south to cover the full length of the bus bays
- 2** Barrier along Henry Street will be lengthened and raised higher to encourage people to cross the road safely at the designated crossing
- 3** Barriers or gates will be installed to prevent private road traffic driving into the bus station

Key

-  Planted landscaping
-  Bus area
-  Bus station concourse
-  Public and staff facilities
-  Public access route
-  Unsafe routes currently used to access the bus station by people walking



Delivered in partnership by:

**West
Yorkshire**
Combined
Authority

 **Kirklees**
COUNCIL

Funded by:

 **INDUSTRIAL
STRATEGY**
TRANSFORMING CITIES FUND

Transforming Huddersfield Bus Station

Visualisations of our proposals

The below artist impressions represent our ideas for the transformation of Huddersfield Bus Station:



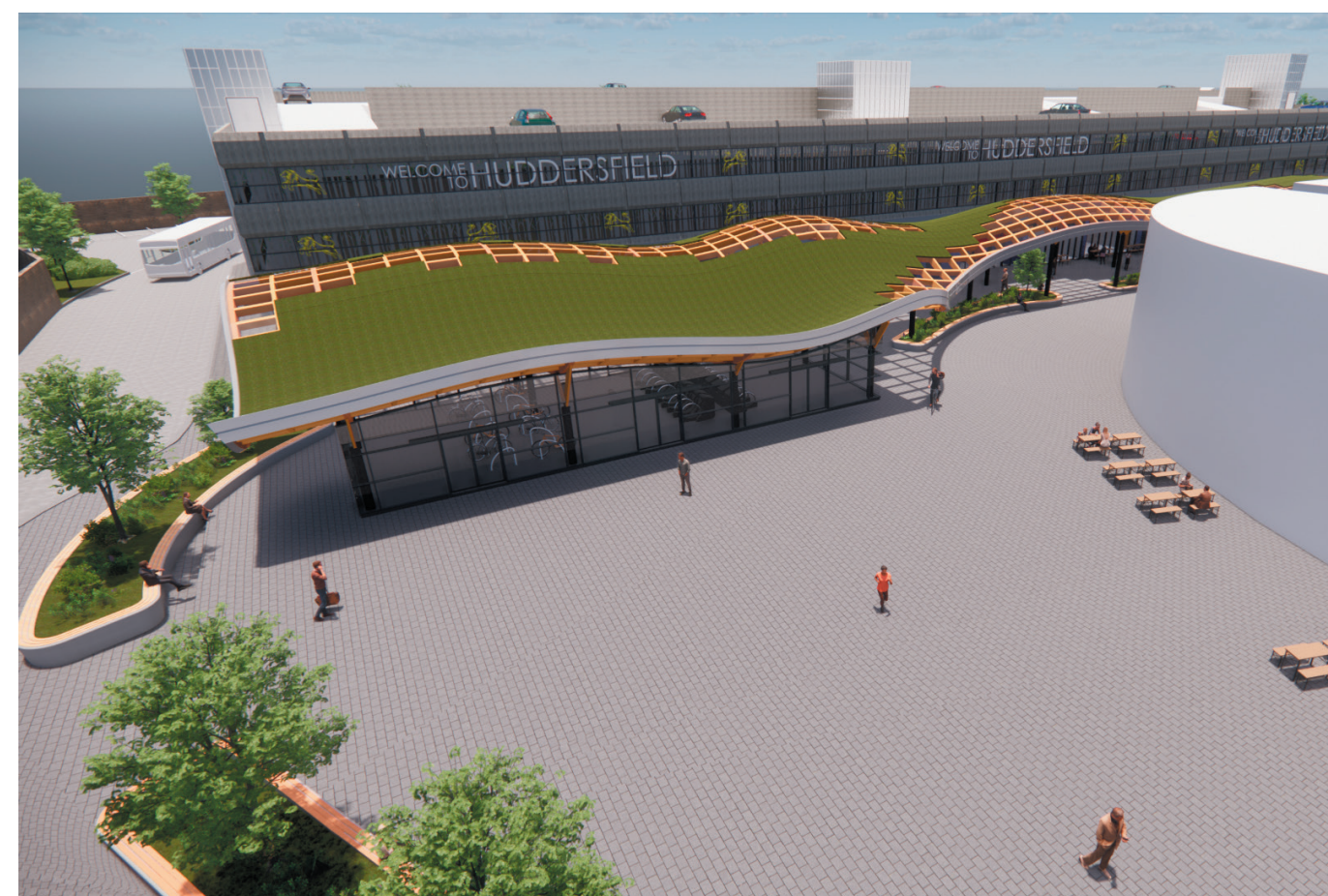
Proposed view of the improved public area, new planting and seating features and shop fronts under the entrance canopy



Proposed view to the area under the car park ramps showing new planting and seating



Proposed view looking southwards towards the canopy from Upperhead Row



Proposed aerial view across Macaulay Square to the proposed canopy with green roof



Proposed street view from Macaulay Square to the cycle parking under the canopy

Delivered in partnership by:



Funded by:



Transforming Huddersfield Bus Station

Visualisations of our proposals



Proposed new Henry Street access to the bus station



View of the security and visual improvements in the stair lift areas to the multi-storey car park



Proposed view of the main entrance towards the concourse walkway showing the upgraded interior



Proposed view of the improved Henry Street entrance building with improved glazing and interior



Proposed view of the concourse walkway with improved bus stands and shop fronts

Delivered in partnership by:



Funded by:

