

SAFETY, HEALTH AND ENVIRONMENTAL INFORMATION BOX

IT IS ASSUMED THAT WORKS ON THIS DRAWING WILL BE CARRIED OUT BY A COMPETENT CONTRACTOR WORKING, WHERE APPROPRIATE, TO AN APPROPRIATE METHOD STATEMENT

THIS DRAWING IS TO BE USED ONLY FOR THE PURPOSE OF ISSUE THAT IT WAS ISSUED FOR AND IS SUBJECT TO AMENDMENT

Notes

1. DO NOT SCALE FROM THIS DRAWING. USE ONLY PRINTED DIMENSIONS.

2. THIS DRAWING IS TO BE READ IN CONJUNCTION WITH LEVEL CROSSING GROUND PLAN 60601435-ACM-03-TL-DRG-ESG-000001.

3. SEG HILL LEVEL CROSSING TO BE RETAINED AS AN AUTOMATIC HALF BARRIER (AHB) TYPE LEVEL CROSSING.

4. REFER TO DRAWING 60601435-ACM-03-ZZ-DRG-EHW-002052 FOR PROPOSED GROUNDING AND VISIBILITY ASSESSMENT.

5. SURFACING EXTENTS AND STRUCTURAL PAVEMENT DEFECT TREATMENT SUBJECT TO PAVEMENT VISUAL CONDITION SURVEY TO BE CARRIED OUT AT DETAILED DESIGN STAGE (GRIP 5). CORING AND DCP SURVEYS TO BE UNDERTAKEN IF REQUIRED.

6. ROAD MARKINGS ON DIRECT APPROACHES TO THE LEVEL CROSSING TO BE REFRESHED WHERE REQUIRED.

7. FENCING AND GATES SHOWN ARE NETWORK RAIL ASSETS UNLESS STATED OTHERWISE. THIRD PARTY FENCING TYPES TO BE AGREED.

8. ALL CONSTRUCTION MATERIALS SHALL BE IN ACCORDANCE WITH THE SPECIFICATION FOR HIGHWAY WORKS AND IN AGREEMENT WITH THE OVERSEEING ORGANISATION.

LEGEND

PAVEMENT INLAY

40MM MILLING

40MM AC10 CLOSE SURF 100/150

PAVEMENT INLAY/OVERLAY

40MM MILLING

40MM AC10 CLOSE SURF 100/150

REGULATING COURSES AS REQUIRED

PAVEMENT FULL CONSTRUCTION

40MM AC10 CLOSE SURF 100/150

60MM AC20 HDM BIN 40/60

150MM AC32 HDM BASE 40/60

300MM TYPE 1 GRANULAR SUB-BASE

NEW FOOTWAY CONSTRUCTION / FOOTWAY INLAY

20MM AC6 CLOSE SURF 100/150

50MM AC20 DENSE BIN 40/60

100MM TYPE 1 GRANULAR SUB-BASE

PROPOSED VERGE

TACTILE PAVING (CORDUROY SURFACE)

PCC KERBING

PCC FOOTWAY EDGING

PROPOSED FENCING / GATE (SEE NOTE 7).

EXISTING FENCING REMOVED

PROPOSED GUARDRAIL

PROPOSED TRAFFIC SIGN ASSEMBLY

PROPOSED LIGHTING COLUMN

UTILITY SERVICES KEY

NETWORK RAIL HISTORIC CABLE ROUTE

WATER - SURFACE WATER

WATER - FOUL SEWER

WATER - COMBINED SEWER

WATER - TREATED SEWER

WATER - ABANDONED

WATER - SUPPLY

WATER - WATER COURSE

GAS NETWORK - LP MAINS

GAS NETWORK - MP MAINS

GAS NETWORK - IP MAINS

GAS NETWORK - HP MAINS

OVERHEAD B.T. TELEPHONE

UNDERGROUND B.T. TELEPHONE

ELECTRICITY - 415v LV CABLES

ELECTRICITY - 11kv HV CABLES

ELECTRICITY - 33kv EHV CABLES

VIRGIN MEDIA TELECOMMUNICATIONS

VODAFONE TELECOMMUNICATIONS

GLOBAL CROSSINGS, FIBERNET & LEVEL 3

SKY TELECOMMUNICATIONS

GENERAL TELECOMMUNICATIONS CABLES

ALTHOUGH AT THE DATE OF ISSUE OF THIS DRAWING THE INFORMATION IS AS UP TO DATE AS POSSIBLE, IT IS NOT A STATEMENT OF VALIDITY, ACCURACY OR COMPLETENESS AS TO ANY OF THE SERVICES INFORMATION SHOWN AND MUST NOT BE RELIED ON AS SUCH.

THE CONTRACTOR MUST REFER TO THE ORIGINAL BURIED SERVICES RECORD SEARCH PACKAGE AS SUPPLIED BY NETWORK RAIL, PRIOR TO BREAKING GROUND AND MUST ALSO COMPLY WITH ALL REQUIREMENTS SET OUT WITHIN, INCLUDING CONTACTING LOCAL ENGINEERS, CARRYING OUT RISK ASSESSMENT AND COMPLYING WITH RELEVANT HSE GUIDANCE AND NETWORK RAIL STANDARDS.

ONLY SERVICES WITHIN THE RAILWAY BOUNDARY AND RELEVANT TO THE PROPOSED WORKS ARE SHOWN.

Client

Northumberland County Council

Project Title

SEGHILL LEVEL CROSSING

HIGHWAYS

GENERAL ARRANGEMENT

Drawing Title

SEGHILL LEVEL CROSSING

HIGHWAYS

GENERAL ARRANGEMENT

Designed

J.McDermott

Drawn

C.Hodson

Checked

D.Barker

Approved

D.Barker

Date

16/08/21

Signed

Signed

Signed

Signed

Subsidiary

C4

AECOM Internal Project No.

60601435

Engineering Manager

Alexander Bathie

alexander.bathie@aecom.com

Scale @ 594 x 841

Zone / ELR / Mileage

--- to

0141 354 5868

AS SHOWN

Zone / ELR / Mileage

--- to

0141 354 5868

THIS DRAWING HAS BEEN PREPARED FOR THE USE OF AECOM'S CLIENT. IT MAY NOT BE USED, REPRODUCED, REPRODUCED OR RELIED UPON BY THIRD PARTIES, EXCEPT AS AGREED BY AECOM OR AS REQUIRED BY LAW. AECOM ACCEPTS NO RESPONSIBILITY AND DENIES ANY LIABILITY WHATSOEVER TO ANY PARTY THAT USES OR RELIES ON THIS DOCUMENT WITHOUT AECOM'S EXPRESS WRITTEN CONSENT. DO NOT SCALE THIS DOCUMENT. ALL MEASUREMENTS MUST BE OBTAINED FROM THE STATED DIMENSIONS.

AECOM Infrastructure & Environment UK Limited

7th Floor, Aurora Building

120 Bothwell Street

Glasgow

Tel: +44-141-248-0300

Fax: N/A

AECOM

www.aecom.com

Drawing Number

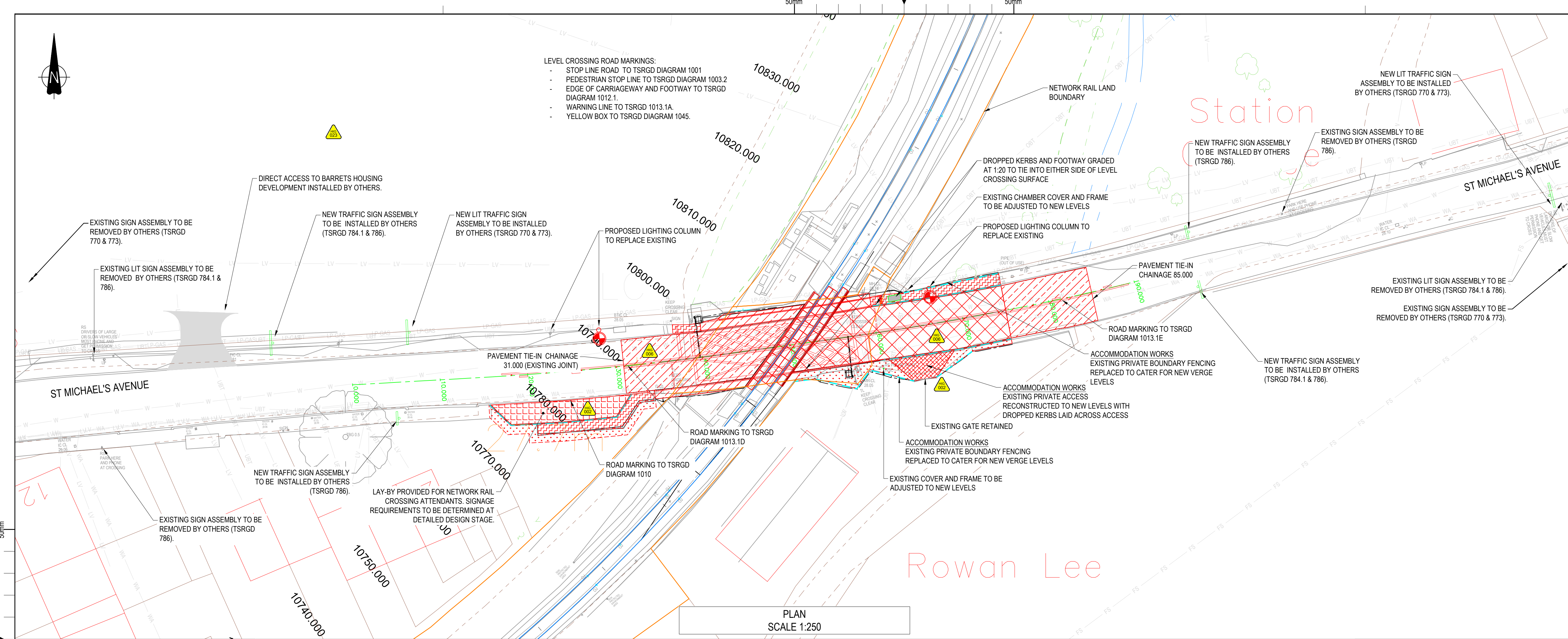
60601435-ACM-03-ZZ-DRG-EHW-002051

Rev

A01

Urbanis: SUBSIDIARY
P01: 594 x 841
STIMES

A1: 594 x 841



SAFETY, HEALTH AND ENVIRONMENTAL INFORMATION

NOTES BELOW ARE ADDITIONAL TO HAZARDS/RISKS NORMALLY ASSOCIATED WITH THIS TYPE OF WORK:

HIG002. RISK OF STRIKING BURIED SERVICES EXCAVATION WORKS

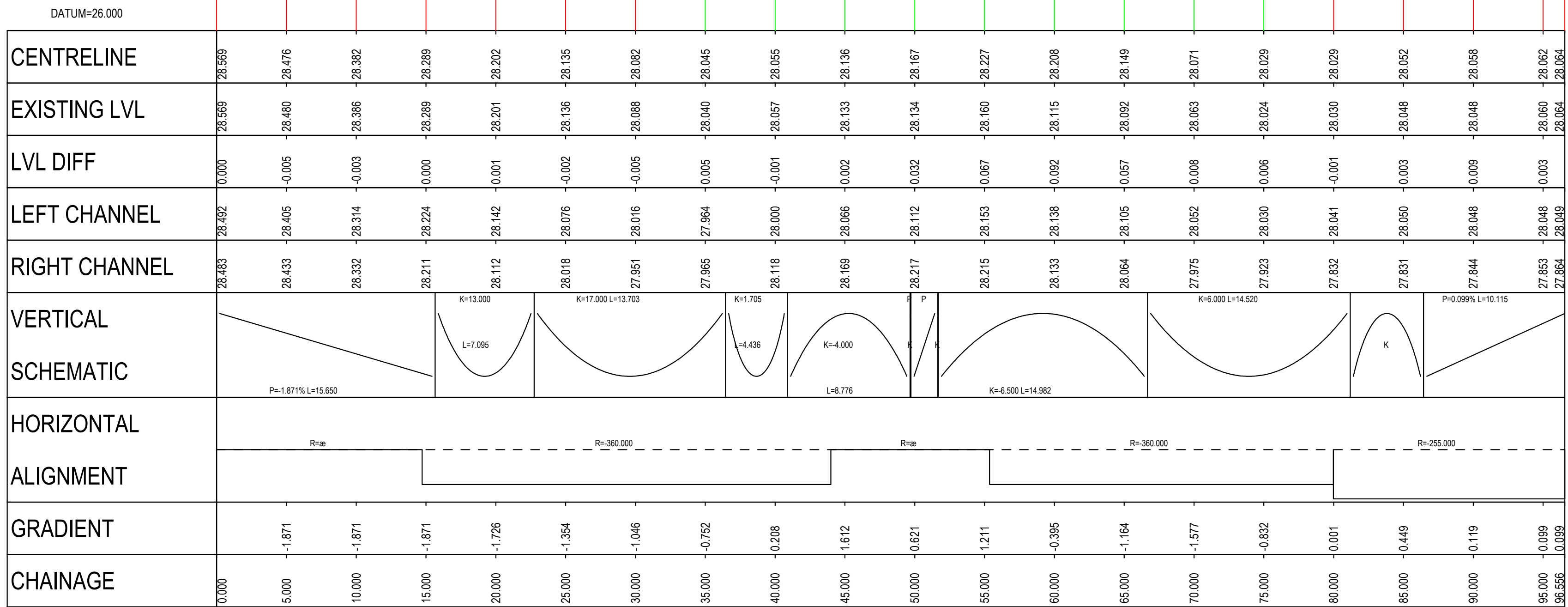
HIG006. POTENTIAL FOR TAR (HAZARDOUS WASTE) WITHIN PAVEMENT ARISINGS

HIG023. BARRAT HOMES ADJACENT CONSTRUCTION WORKS

THESE NOTES ARE BASED ON THE USE OF EXPERIENCED AND COMPETENT CONTRACTORS CARRYING OUT THE WORK USING AN APPROVED SAFE METHOD OF WORKING.

KEY

- PROP. CENTRELINE
- PROP. LEFT CHANNEL
- PROP. RIGHT CHANNEL
- EX. CENTRELINE
- EX. LEFT CHANNEL
- EX. RIGHT CHANNEL



LONGITUDINAL SECTION
SCALE 1:250 H 1:50 V

SAFETY, HEALTH AND ENVIRONMENTAL INFORMATION BOX

IT IS ASSUMED THAT WORKS ON THIS DRAWING WILL BE CARRIED OUT BY A COMPETENT CONTRACTOR WORKING, WHERE APPROPRIATE, TO AN APPROPRIATE METHOD STATEMENT

THIS DRAWING IS TO BE USED ONLY FOR THE PURPOSE OF ISSUE THAT IT WAS ISSUED FOR AND IS SUBJECT TO AMENDMENT

Notes

- DO NOT SCALE FROM THIS DRAWING. USE ONLY PRINTED DIMENSIONS.
- THIS DRAWING IS TO BE READ IN CONJUNCTION WITH LEVEL CROSSING GROUND PLAN 60601435-ACM-04-TL-DRG-ESG-000001.
- HARTLEY LEVEL CROSSING TO REMAIN AS AN AUTOMATIC HALF BARRIER (AHB) TYPE LEVEL CROSSING.
- REFER TO DRAWING 60601435-ACM-04-ZZ-DRG-EHW-003052 FOR PROPOSED GROUNDING AND VISIBILITY ASSESSMENT.
- THIS DRAWING IS ALSO TO BE READ IN CONJUNCTION WITH HIGHWAYS APPROVAL IN PRINCIPAL FORM 001 60601435-ACM-04-ZZ-F01-EHW-003056.
- SURFACING EXTENTS AND STRUCTURAL PAVEMENT DEFECT TREATMENT SUBJECT TO PAVEMENT VISUAL CONDITION SURVEY TO BE CARRIED OUT AT DETAILED DESIGN STAGE (GRIP 5). CORING AND DCP SURVEYS TO BE UNDERTAKEN IF REQUIRED.
- ROAD MARKINGS ON DIRECT APPROACHES TO THE LEVEL CROSSING TO BE REFRESHED WHERE REQUIRED.
- FENCING AND GATES SHOWN ARE NETWORK RAIL ASSETS UNLESS STATED OTHERWISE. THIRD PARTY FENCING TYPES TO BE AGREED.
- ALL CONSTRUCTION MATERIALS SHALL BE IN ACCORDANCE WITH THE SPECIFICATION FOR HIGHWAY WORKS AND IN AGREEMENT WITH THE OVERSEEING ORGANISATION.
- BARRATS HOUSING DEVELOPMENT WORKS TO BE CARRIED OUT IN ADVANCE OF PROPOSED WORKS ARE NOTED AS UNDERTAKEN BY OTHERS.

LEGEND

	PAVEMENT INLAY
	40MM MILLING
	40MM AC10 CLOSE SURF 100/150
	PAVEMENT INLAY/OVERLAY
	40MM MILLING
	40MM AC10 CLOSE SURF 100/150
	40-100MM AC20 DENSE BIN 40/60
	REGULATING COURSES AS REQUIRED
	ACCESS CONSTRUCTION
	40MM AC10 CLOSE SURF 100/150
	60MM AC20 DENSE BIN 40/60
	100MM AC32 DENSE BASE 40/60
	300MM TYPE 1 GRANULAR SUB-BASE
	NEW FOOTWAY CONSTRUCTION /
	FOOTWAY INLAY
	20MM AC6 CLOSE SURF 100/150
	50MM AC20 DENSE BIN 40/60
	100MM TYPE 1 GRANULAR SUB-BASE
	MAINTENANCE LAY-BY
	40MM AC10 CLOSE SURF 100/150
	60MM AC20 HDM BIN 40/60
	150MM AC32 HDM BASE 40/60
	300MM TYPE 1 GRANULAR SUB-BASE
	PROPOSED VERGE
	TACTILE PAVING (CORDUROU SURFACE)
	PCC KERBING
	PCC FOOTWAY EDGING
	PROPOSED FENCING / GATE (SEE NOTE 8).
	EXISTING FENCING REMOVED
	TRAFFIC SIGN ASSEMBLY (INSTALLED BY OTHERS)
	PROPOSED LIGHTING COLUMN

UTILITY SERVICES KEY

NWR	NETWORK RAIL HISTORIC CABLE ROUTE
SW	WATER - SURFACE WATER
TS	WATER - FOUL SEWER
C	WATER - COMBINED SEWER
TS	WATER - TREATED SEWER
WA	WATER - ABANDONED
W	WATER - SUPPLY
WC	WATER - WATER COURSE
LP-GAS	GAS NETWORK - LP MAINS
MP-GAS	GAS NETWORK - MP MAINS
HP-GAS	GAS NETWORK - IP MAINS
IP-GAS	GAS NETWORK - HP MAINS
OST	OVERHEAD B.T. TELEPHONE
UBT	UNDERGROUND B.T. TELEPHONE
LV	ELECTRICITY - 415v LV CABLES
HV	ELECTRICITY - 11kv HV CABLES
EHV	ELECTRICITY - 33kv EHV CABLES
VM	VIRGIN MEDIA TELECOMMUNICATIONS
VF	VODAFONE TELECOMMUNICATIONS
GCF	GLOBAL CROSSINGS, FIBERNET & LEVEL 3
SKY	SKY TELECOMMUNICATIONS
T	GENERAL TELECOMMUNICATIONS CABLES

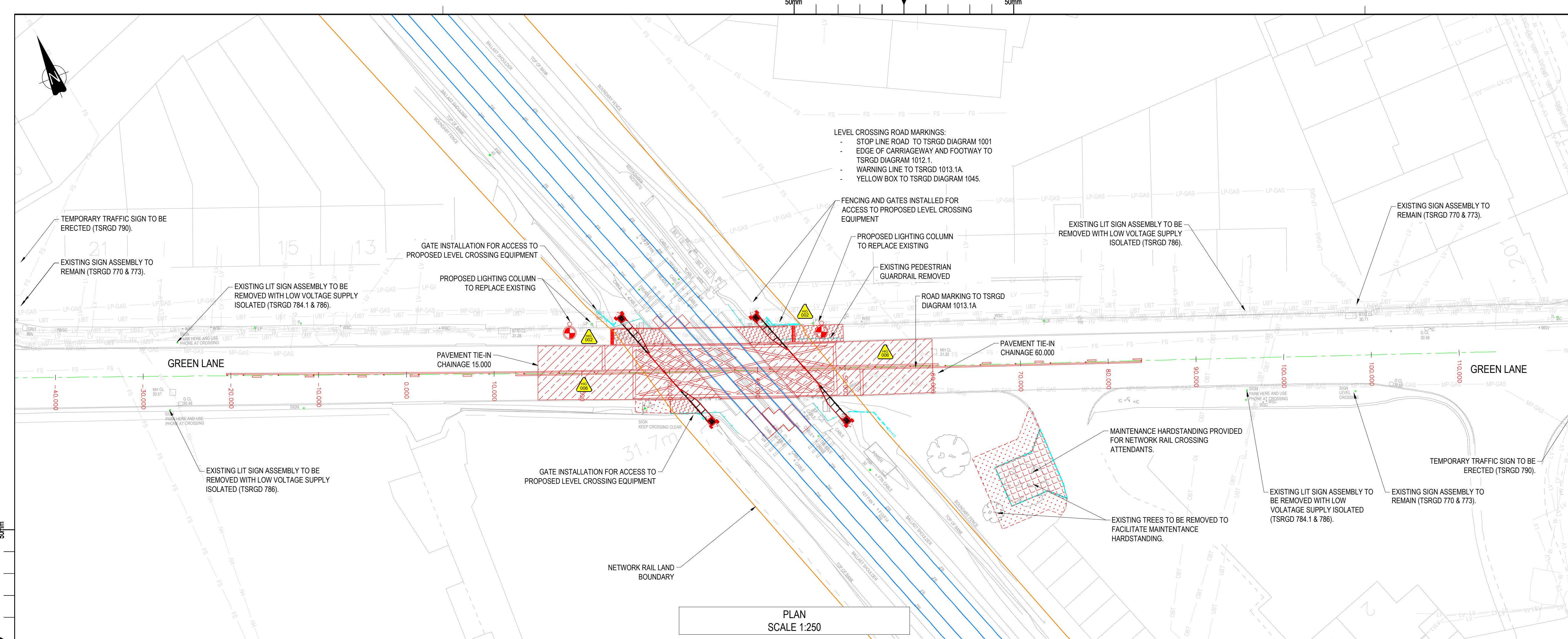
ALL SERVICES INFORMATION SHOWN ON THIS DRAWING IS BASED ON NETWORK RAIL BURIED SERVICES RECORD SEARCH WHICH INCLUDES INPUT FROM NETWORK RAIL'S RECORDS AND WHERE APPROPRIATE, THIRD PARTIES SUCH AS UTILITY COMPANIES. THE SEARCH DOES NOT COVER A SEARCH OF LOCAL COUNCIL RECORDS. SCHEMATIC SIGNAL AND TELECOM (S&T) CABLES PLANS ARE NOT PROVIDED AS PART OF THE SEARCH RESULTS, THEREFORE THE CONTRACTOR MUST ASSUME S&T CABLES ARE PRESENT UNTIL PROVEN OTHERWISE.

ALTHOUGH AT THE DATE OF ISSUE OF THIS DRAWING THE INFORMATION IS AS UP TO DATE AS POSSIBLE, IT IS NOT A STATEMENT OF VALIDITY, ACCURACY OR COMPLETENESS AS TO ANY OF THE SERVICES INFORMATION SHOWN AND MUST NOT BE RELIED ON AS SUCH.

THE CONTRACTOR MUST REFER TO THE ORIGINAL BURIED SERVICES RECORD SEARCH PACKAGE AS SUPPLIED BY NETWORK RAIL PRIOR TO BREAKING GROUND AND MUST ALSO COMPLY WITH ALL REQUIREMENTS SET OUT WITHIN, INCLUDING CONTACTING LOCAL ENGINEERS, CARRYING OUT RISK ASSESSMENT AND COMPLYING WITH RELEVANT HSE GUIDANCE AND NETWORK RAIL STANDARDS.

ONLY SERVICES WITHIN THE RAILWAY BOUNDARY AND RELEVANT TO THE PROPOSED WORKS ARE SHOWN.

For TWAO	CH	DB	DB	22/06/20	P01
For AIP	CH	DB	NW	23/07/21	A01
Revision Details	By	Chkd	Appd	Checked Date	Suffix
Purpose of Issue	FOR ACCEPTANCE				
GRIP Stage	GRIP 4				
Client					
Project Title	NORTHUMBERLAND LINE				
Drawing Title	HARTLEY LEVEL CROSSING HIGHWAYS GENERAL ARRANGEMENT				
Designed	Drawn	Checked	Approved	Date	
C.Hodson	C.Hodson	D.Barker	N.Webster	23/07/21	
Signed	Signed	Signed	Signed		
Subsidiary	AECOM Internal Project No.		Engineering Manager		
C4	60601435		Alexandra Bathie		
Scale @ 594 x 841	Zone / ELR / Mileage		0141 354 5868		
AS SHOWN	---				
THIS DRAWING HAS BEEN PREPARED FOR THE USE OF AECOM'S CLIENT. IT MAY NOT BE USED, REPRODUCED, REPRODUCED OR RELIED UPON BY THIRD PARTIES, EXCEPT AS AGREED BY AECOM OR AS REQUIRED BY LAW. AECOM ACCEPTS NO RESPONSIBILITY AND DENIES ANY LIABILITY WHATSOEVER TO ANY PARTY THAT USES OR RELIES ON THIS DRAWING WITHOUT AECOM'S EXPRESS WRITTEN CONSENT. DO NOT SCALE THIS DOCUMENT. ALL MEASUREMENTS MUST BE OBTAINED FROM THE STATED DIMENSIONS.					
AECOM Infrastructure & Environment UK Limited 7th Floor, Aurora Building 120 Bothwell Street Glasgow Tel: +44-141-248-0300 Fax: N/A					
www.aecom.com					
Drawing Number					Rev
60601435-ACM-04-ZZ-DRG-EHW-003051					A01



SAFETY, HEALTH AND ENVIRONMENTAL INFORMATION BOX

IT IS ASSUMED THAT WORKS ON THIS DRAWING WILL BE CARRIED OUT BY A COMPETENT CONTRACTOR WORKING, WHERE APPROPRIATE, TO AN APPROPRIATE METHOD STATEMENT

THIS DRAWING IS TO BE USED ONLY FOR THE PURPOSE OF ISSUE THAT IT WAS ISSUED FOR AND IS SUBJECT TO AMENDMENT

Notes

1. DO NOT SCALE FROM THIS DRAWING. USE ONLY PRINTED DIMENSIONS.

2. THIS DRAWING IS TO BE READ IN CONJUNCTION WITH LEVEL CROSSING GROUND PLAN 60601435-ACM-07-TL-DRG-ESG-000001.

3. GREEN LANE LEVEL CROSSING TO BE UPGRADED TO AN OBSTACLE DETECTION (MCB-OD) TYPE LEVEL CROSSING.

4. REFER TO DRAWING 60601435-ACM-07-ZZ-DRG-EHW-005052 FOR GROUNDING AND VISIBILITY ASSESSMENTS.

5. REFER TO DRAWING 60601435-ACM-07-ZZ-DRG-EHW-005053 FOR MCB-OD PROFILE ASSESSMENT.

6. SURFACING EXTENTS AND STRUCTURAL PAVEMENT DEFECT TREATMENT SUBJECT TO PAVEMENT VISUAL CONDITION SURVEY TO BE CARRIED OUT AT DETAILED DESIGN STAGE (GRIP 5). CORING AND DCP SURVEYS TO BE UNDERTAKEN IF REQUIRED.

7. ROAD MARKINGS ON DIRECT APPROACHES TO THE LEVEL CROSSING TO BE REFRESHED WHERE REQUIRED.

8. FENCING AND GATES SHOWN ARE NETWORK RAIL ASSETS UNLESS STATED OTHERWISE. THIRD PARTY FENCING TYPES TO BE AGREED.

9. ALL CONSTRUCTION MATERIALS SHALL BE IN ACCORDANCE WITH THE SPECIFICATION FOR HIGHWAY WORKS AND IN AGREEMENT WITH THE OVERSEEING ORGANISATION.

LEGEND

PAVEMENT INLAY

40MM MILLING

40MM AC10 CLOSE SURF 100/150

NEW FOOTWAY CONSTRUCTION / FOOTWAY INLAY

20MM AC6 CLOSE SURF 100/150

50MM AC20 DENSE BIN 40/60

100MM TYPE 1 GRANULAR SUB-BASE

PAVEMENT FULL CONSTRUCTION

40MM AC10 CLOSE SURF 100/150

60MM AC20 HDM BIN 40/60

150MM AC32 HDM BASE 40/60

300MM TYPE 1 GRANULAR SUB-BASE

PROPOSED VERGE

TACTILE PAVING (CORDUROY SURFACE)

PCC KERBING

PCC FOOTWAY EDGING

PROPOSED FENCING / GATE (SEE NOTE 8).

EXISTING FENCING REMOVED

PROPOSED TRAFFIC SIGN ASSEMBLY

PROPOSED LIGHTING COLUMN

SAFETY, HEALTH AND ENVIRONMENTAL INFORMATION

NOTES BELOW ARE ADDITIONAL TO HAZARDS/RISKS NORMALLY ASSOCIATED WITH THIS TYPE OF WORK:

HIG002. RISK OF STRIKING BURIED SERVICES EXCAVATION WORKS

HIG006. POTENTIAL FOR TAR (HAZARDOUS WASTE) WITHIN PAVEMENT ARISINGS

THESE NOTES ARE BASED ON THE USE OF EXPERIENCED AND COMPETENT CONTRACTORS CARRYING OUT THE WORK USING AN APPROVED SAFE METHOD OF WORKING.

KEY

—

 PROP. CENTRELINE

—

 PROP. LEFT CHANNEL

—

 PROP. RIGHT CHANNEL

—

 EX. CENTRELINE

—

 EX. LEFT CHANNEL

—

 EX. RIGHT CHANNEL

CHAINAGE

0.000

1.000

2.000

3.000

4.000

5.000

6.000

7.000

8.000

9.000

10.000

11.000

12.000

13.000

14.000

15.000

16.000

17.000

18.000

19.000

20.000

21.000

22.000

23.000

24.000

25.000

26.000

27.000

28.000

29.000

30.000

31.000

32.000

33.000

34.000

35.000

36.000

37.000

38.000

39.000

40.000

41.000

42.000

43.000

44.000

45.000

46.000

47.000

48.000

49.000

50.000

51.000

52.000

53.000

54.000

55.000

56.000

57.000

58.000

59.000

60.000

61.000

62.000

63.000

64.000

65.000

66.000

67.000

68.000

69.000

70.000

71.000

72.000

73.000

74.000

EXISTING LEFT CHANNEL

30.828

30.843

30.858

30.873

30.888

30.903

30.918

30.933

30.948

30.963

30.978

30.993

31.008

31.023

31.038

31.053

31.068

31.083

31.098

31.113

31.128

31.143

31.158

31.173

31.188

31.203

31.218

31.233

31.248

31.263

31.278

31.293

31.308

31.323

31.338

31.353

31.368

31.383

31.398

31.413

31.428

31.443

31.458

31.473

31.488

31.503

31.518

31.533

31.548

31.563

31.578

31.593

31.608

31.623

31.638

31.653

31.668

31.683

31.698

31.713

31.728

31.743

31.758

31.773

31.788

31.803

31.818

31.833

31.848

31.863

31.878

31.893

31.908

31.923

31.938

31.953

31.968

31.983

31.998

32.013

32.028

32.043

32.058

32.073

32.088

32.103

32.118

32.133

32.148

32.163

32.178

32.193

32.208

32.223

32.238

32.253

32.268

32.283

32.298

32.313

32.328

32.343

32.358

32.373

32.388

32.403

32.418

32.433

32.448

32.463

32.478

32.493

32.508

32.523

32.538

32.553

32.568

32.583

32.598

32.613

32.628

32.643

32.658

32.673

32.688

32.703

32.718

32.733

32.748

32.763

32.778

32.793

32.808

32.823

32.838

32.853

32.868

32.883

32.898

32.913

32.928

32.943

32.958

32.973

32.988

33.003

33.018

33.033

33.048

33.063

33.078

33.093

33.108

33.123

33.138

33.153

33.168

33.183

33.198

33.213

33.228

33.243

33.258

33.273

33.288

33.303

33.318

33.333

33.348

33.363

33.378

33.393

33.408

33.423

33.438

33.453

33.468

33.483

33.498

33.513

33.528

33.543

33.558

33.573

33.588

33.603

33.618

33.633

33.648

33.663

33.678

33.693

33.708

33.723

33.738

33.753

33.768

33.783

33.798

33.813

33.828

33.843

33.858

33.873

33.888

33.903

33.918

33.933

33.948

33.963

33.978

33.993

34.008

34.023

34.038

34.053

34.068

34.083

34.098

34.113

34.128

34.143

34.158

34.173

34.188

34.203

34.218

34.233

34.248

34.263

34.278

34.293

34.308

34.323

34.338

34.353

34.368

34.383

34.398

34.413

34.428

34.443

34.458

34.473

34.488

34.503

34.518

34.533

34.548

34.563

34.578

34.593

34.608

34.623

34.638

34.653

34.668

34.683

34.698

34.713

34.728

34.743

34.758

34.773

34.788

34.803

34.818

34.833

34.848

34.863

34.878

34.893

34.908

34.923

34.938

34.953

34.968

34.983

34.998

35.013

35.028

35.043

35.058

35.073

35.088

35.103

35.118

35.133

35.148

35.163

35.178

35.193

35.208

35.223

35.238

35.253

35.268

35.283

35.298

35.313

35.328

35.343

35.358

35.373

35.388

35.403

35.418

35.433

35.448

35.463

35.478

35.493

35.508

35.523

35.538

35.553

35.568

35.583

35.598

35.613

35.628

35.643

35.658

35.673

35.688

35.703

35.718

35.733

35.748

35.763

35.778

35.793

35.808

35.823

35.838

35.853

35.868

35.883

35.898

35.913

35.928

35.943

35.958

35.973

35.988

36.003

36.018

36.033

36.048

36.063

36.078

36.093

36.108

36.123

36.138

36.153

36.168

36.183

36.198

36.213

36.228

36.243

36.258

36.273

36.288

36.303

36.318

36.333

36.348

36.363

36.378

36.393

36.408

36.423

36.438

36.453

36.468

36.483

36.498

36.513

36.528

36.543

36.558

36.573

36.588

36.603

36.618

36.633

36.648

36.663

36.678

36.693

36.708

36.723

36.738

36.753

36.768

36.783

36.798

36.813

36.828

36.843

36.858

36.873

36.888

36.903

36.918

36.933

36.948

36.963

36.978

36.993

37.008

37.023

37.038

37.053

37.068

37.083

37.098

37.113

37.128

37.143

37.158

37.173

37.188

37.203

37.218

37.233

37.248

37.263

37.278

37.293

37.308

37.323

37.338

37.353

37.368

37.383

37.398

37.413

37.428

37.443

37.458

37.473

37.488

37.503

37.518

37.533

37.548

37.563

37.578

37.593

37.608

37.623

37.638

37.653

37.668

37.683

37.698

37.713

37.728

37.743

37.758

37.773

37.788

37.803

37.818

37.833

37.848

37.863

37.878

37.893

37.908

37.923

37.938

37.953

37.968

37.983

37.998

38.013

38.028

38.043

38.058

38.073

38.088

38.103

38.118

38.133

38.148

38.163

38.178

38.193

38.208

38.223

38.238

38.253

38.268

38.283

38.298

38.313

38.328

38.343

38.358

38.373

38.388

38.403

38.418

38.433

38.448

38.463

38.478

38.493

38.508

38.523

38.538

38.553

38.568

38.583

38.598

38.613

38.628

38.643

38.658

38.673

38.688

38.703

38.718

38.733

38.748

38.763

38.778

38.793

38.808

38.823

38.838

38.853

38.868

38.883

38.898

38.913

38.928

38.943

38.958

38.973

38.988

39.003

39.018

39.033

39.048

39.063

39.078

39.093

39.108

39.123

39.138

39.153

39.168

39.183

39.198

39.213

39.228

39.243

39.258

39.273

39.288

39.303

39.318

39.333

39.348

39.363

39.378

39.393

39.408

39.423

39.438

39.453

39.468

39.483

39.498

39.513

39.528

39.543

39.558

39.573

39.588

39.603

39.618

39.633

39.648

39.663

39.678

39.693

39.708

39.723

39.738

39.753

39.768

39.783

39.798

39.813

39.828

39.843

39.858

39.873

39.888

39.903

39.918

39.933

39.948

39.963

39.978

39.993

40.008

40.023

40.038

40.053

40.068

40.083

40.098

40.113

40.128

40.143

40.158

40.173

40.188

40.203

40.218

40.233

40.248

40.263

40.278

40.293

40.308

40.323

40.338

40.353

40.368

40.383

40.398

40.413

40.428

40.443

40.458

40.473

40.488

40.503

40.518

40.533

40.548

40.563

40.578

40.593

40.608

40.623

40.638

40.653

40.668

40.683

40.698

40.713

40.728

40.743

40.758

40.773

40.788

40.803

40.818

40.833

40.848

40.863

40.878

40.893

40.908

40.923

40.938

40.953

40.968

40.983

40.998

41.013

41.028

41.043

41.058

41.073

41.088

41.103

41.118

41.133

41.148

41.163

41.178

41.193

41.208

41.223

41.238

41.253

41.268

41.283

41.298

41.313

41.328

41.343

41.358

41.373

41.388

41.403

41.418

41.433

41.448

41.463

41.478

41.493

41.508

41.523

41.538

41.553

41.568

41.583

41.598

41.613

41.628

41.643

41.658

41.673

41.688

41.703

41.718

41.733

41.748

41.763

41.778

41.793

41.808

41.823

41.838

41.853

41.868

41.883

41.898

41.913

41.928

41.943

41.958

41.973

41.988

42.003

42.018

42.033

42.048

42.063

42.078

42.093

42.108

42.123

42.138

42.153

42.168

42.183

42.198

42.213

42.228

42.243

42.258

42.273

42.288

42.303

42.318

42.333

42.348

42.363

42.378

42.393

42.408

42.423

42.438

42.453

42.468

42.483

42.498

42.513

42.528

42.543

42.558

42.573

42.588

42.603

42.618

42.633

42.648

42.663

42.678

42.693

42.708

42.723

42.738

42.753

42.768

42.783

42.798

42.813

42.828

42.843

42.858

42.873

42.888

42.903

42.918

42.933

42.948

42.963

42.978

42.993

43.008

43.023

43.038

43.053

43.068

43.083

43.098

43.113

43.128

43.143

43.158

43.173

43.188

43.203

43.218

43.233

43.248

43.263

43.278

43.293

43.308

43.323

43.338

43.353

43.368

43.383

43.398

43.413

43.428

43.443

43.458

43.473

43.488

43.503

43.518

43.533

43.548

43.563

43.578

43.593

43.608

43.623

43.638

43.653

43.668

43.683

43.698

43.713

43.728

43.743

43.758

43.773

43.788

43.803

43.818

43.833

43.848

43.863

43.878

43.893

43.908

43.923

43.938

43.953

43.968

43.983

43.998

44.013

44.028

44.043

44.058

44.073

44.088

44.103

44.118

44.133

44.148

44.163