

REVISION NOTE: Key levels added to all existing drawings.

NOTE: Existing floor conditions vary. Levels indicated were taken from Plowman Craven's survey information and are averages, not absolute minimums or maximums. Levels to be confirmed post strip out.

AOD +15.405 LEVEL 03 (OFFICE)
FFL NO.16

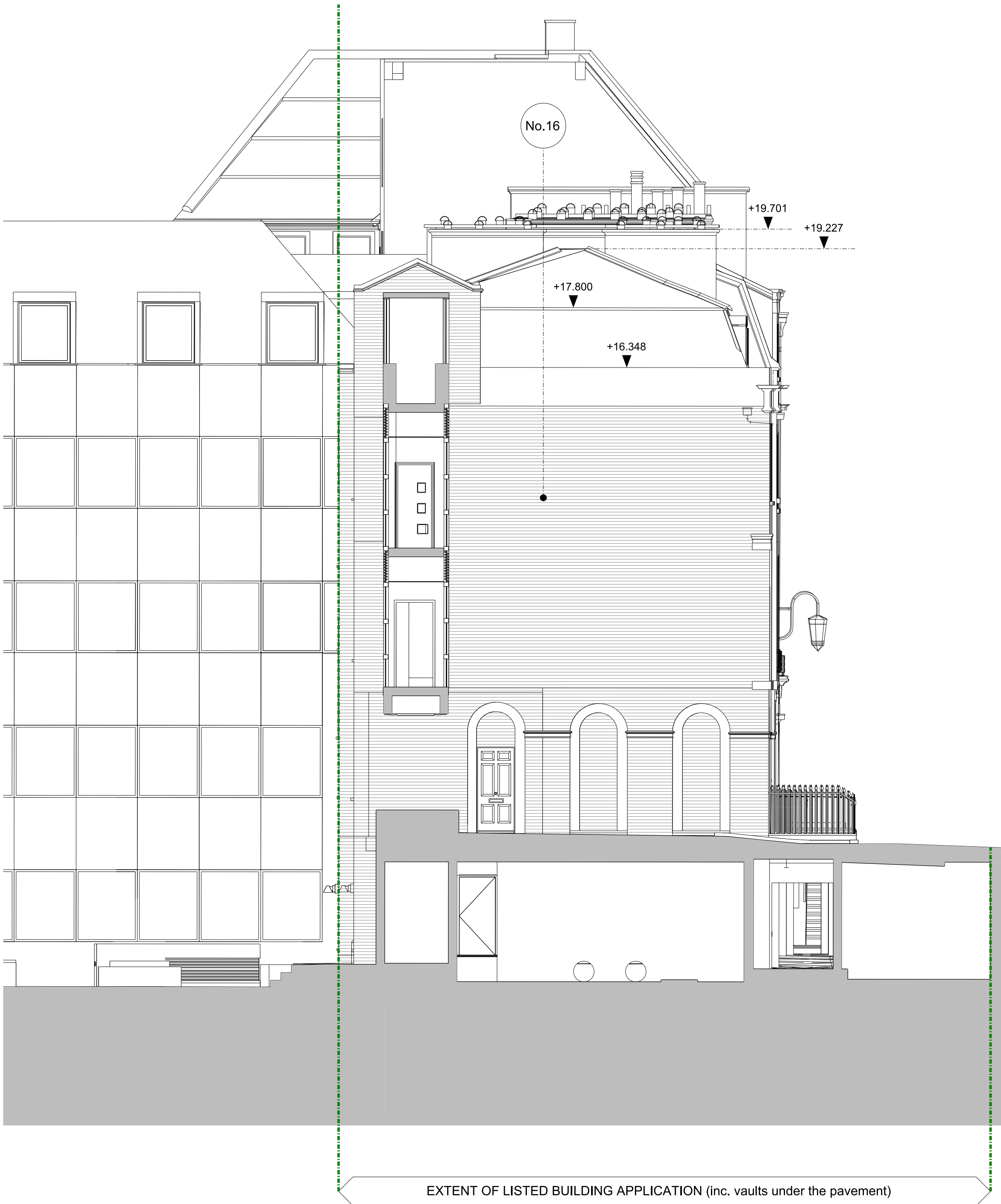
AOD +12.375 LEVEL 02 (OFFICE)
FFL NO.16

AOD +8.590 LEVEL 01 (OFFICE) FFL
NO.16

AOD +4.970 LEVEL GF (OFFICE)
FFL NO.16

AOD +2.090 LEVEL LG (OFFICE)
FFL NO.16

AOD +0.000



01 EXISTING EAST ELEVATION

KEY

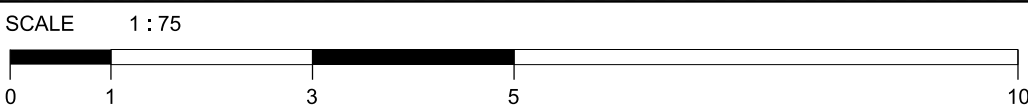
LISTED BUILDING CONSENT BOUNDARY

NOTE

EXISTING BUILDING INFORMATION BASED ON RECEIVED 3D BIM SURVEY FROM FLOWMAN CRAVEN.

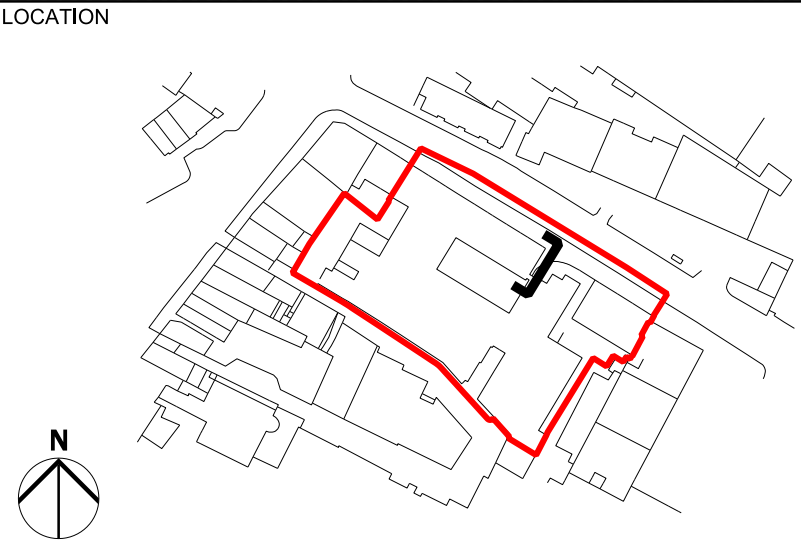
REV DATE

P01 06/12/18 Issued for Planning



NOTE

1. Do not scale from this drawing.
2. All dimensions to be checked on site by the contractor and such dimensions to be his responsibility.
3. Report all drawing errors, omissions and discrepancies to the architect.
4. This document may be issued in an uncontrolled CAD format to enable others to use it as background information to make alterations and/or additions. In that instance the file will be accompanied by a PDF version. It is for those making such alterations and additions to ensure that they make use of current background information.
AHMM Ltd accepts no liability for any such alterations or additions to the background information or arising out of changes to background information which occur prior to alterations or additions being made.



ALLFORD HALL MONAGHAN MORRIS						
ARCHITECTS Ltd 2ND FLOOR, BLOCK C, 5-23 OLD STREET LONDON EC1V 9HL TEL 020 7261 5261 FAX 020 7261 5123 WEB WWW.AHMM.CO.UK						
job title NEW CITY COURT						
drawing title / location GEORGIAN TOWNHOUSES EXISTING EAST ELEVATION						
drawn by JC	checked HT	scale 1:75@A1; 1:150@A3	status PLANNING			
project 14032	zone G	type -	classification (01)	drawing no P202	revision P01	