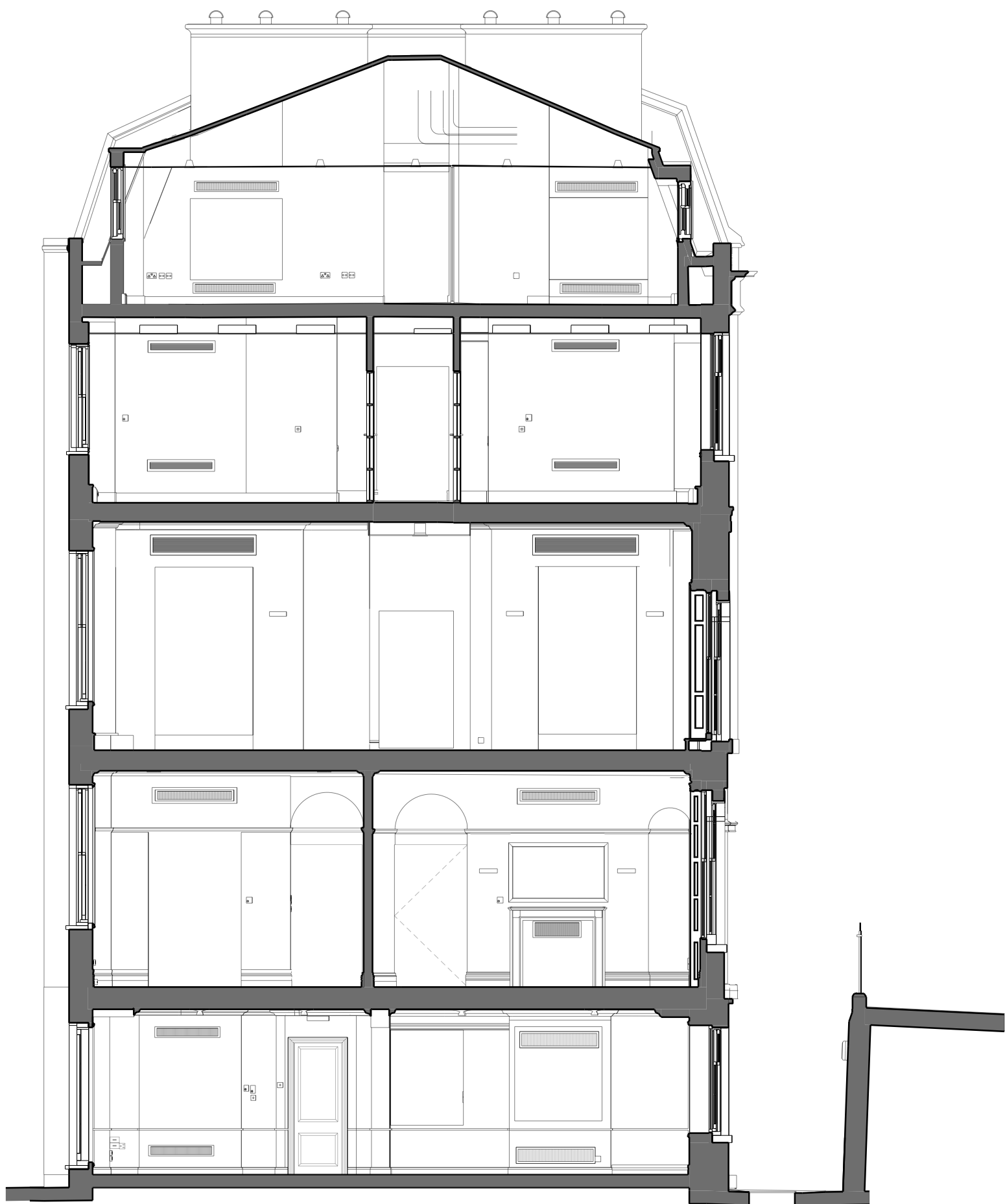
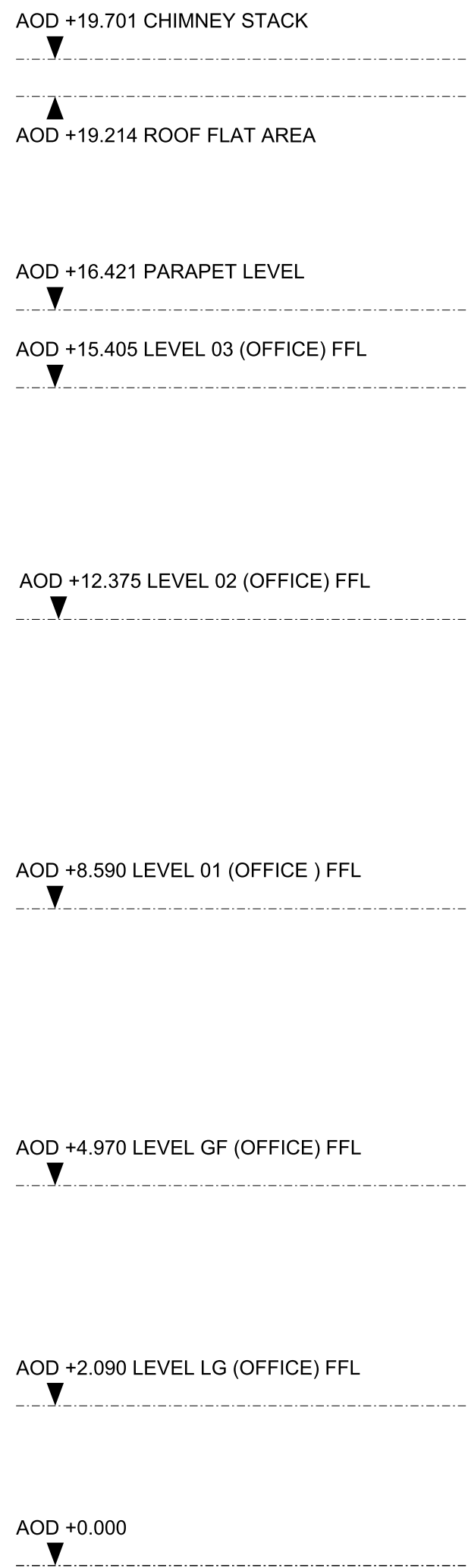


REVISION NOTE: Key levels added to all existing drawings.

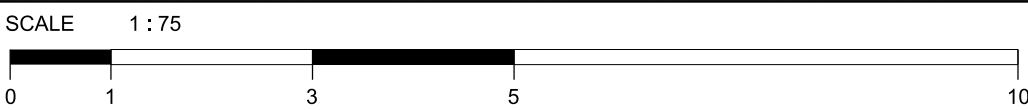
NOTE: Existing floor conditions vary. Levels indicated were taken from Plowman Craven's survey information and are averages, not absolute minimums or maximums. Levels to be confirmed post strip out.



01 EXISTING SECTION DD

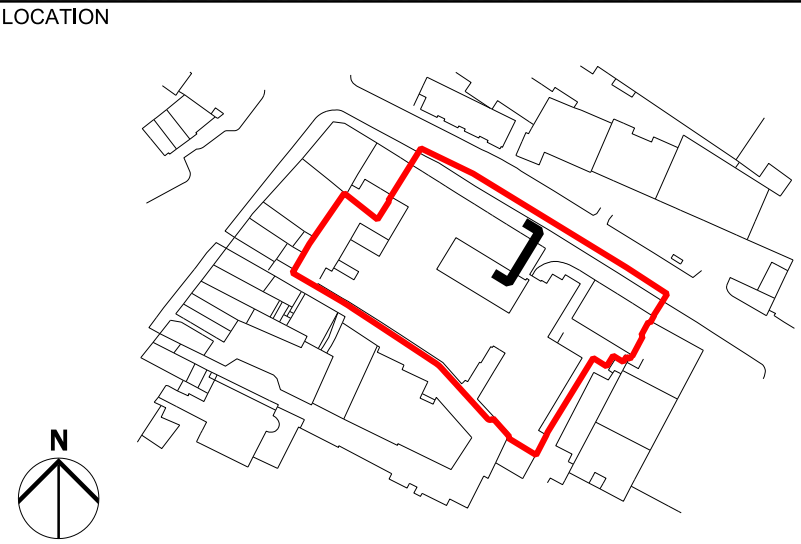
NOTE
EXISTING BUILDING INFORMATION BASED ON RECEIVED 3D BIM SURVEY FROM FLOWMAN CRAVEN.

REV	DATE
P01	06/12/18 Issued for Planning



NOTE

1. Do not scale from this drawing.
2. All dimensions to be checked on site by the contractor and such dimensions to be his responsibility.
3. Report all drawing errors, omissions and discrepancies to the architect.
4. This document may be issued in an uncontrolled CAD format to enable others to use it as background information to make alterations and/or additions. In that instance the file will be accompanied by a PDF version. It is for those making such alterations and additions to ensure that they make use of current background information.
AHMM Ltd accepts no liability for any such alterations or additions to the background information or arising out of changes to background information which occur prior to alterations or additions being made.



ALLFORD HALL MONAGHAN MORRIS					
ARCHITECTS Ltd 2ND FLOOR, BLOCK C, 5-23 OLD STREET LONDON EC1V 9HL TEL 020 7261 5261 FAX 020 7251 5123 WEB WWW.AHMM.CO.UK					
job title NEW CITY COURT					
drawing title / location GEORGIAN TOWNHOUSES EXISTING SECTION DD - no.16					
drawn by ML	checked HT	scale 1:75@A1; 1:150@A3	status PLANNING		
project 14032	zone G	type -	classification (01)	drawing no P304	revision P01