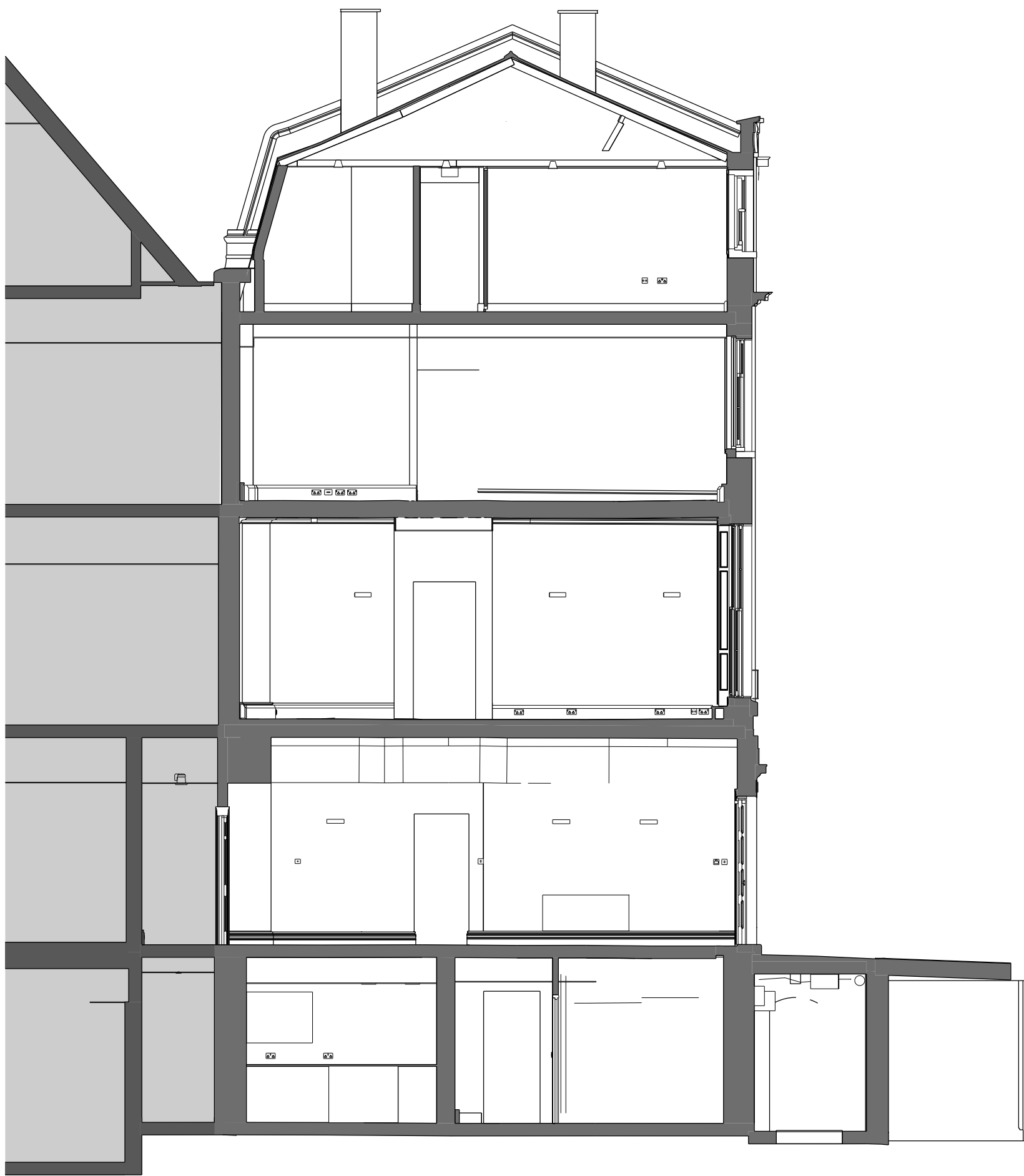


REVISION NOTE: Key levels added to all existing drawings.

NOTE: Existing floor conditions vary. Levels indicated were taken from Plowman Craven's survey information and are averages, not absolute minimums or maximums. Levels to be confirmed post strip out.

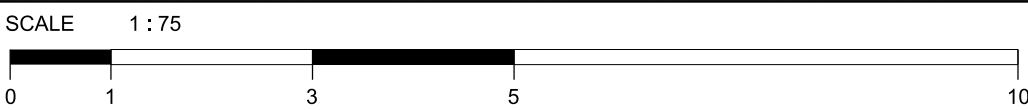
AOD +19.946 CHIMNEY STACK  
▼  
▲  
AOD +19.300 ROOF RIDGE  
  
AOD +15.826 PARAPET LEVEL  
▼  
AOD +15.140 LEVEL 03 (OFFICE) FFL  
▼  
  
AOD +12.140 LEVEL 02 (OFFICE) FFL  
▼  
  
AOD +8.675 LEVEL 01 (OFFICE ) FFL  
▼  
  
AOD +5.080 LEVEL GF (OFFICE) FFL  
▼  
  
AOD +2.260 LEVEL LG (OFFICE) FFL  
▼  
  
AOD +0.000  
▼



01 EXISTING SECTION FF

NOTE  
EXISTING BUILDING INFORMATION BASED ON RECEIVED 3D BIM SURVEY FROM FLOWMAN CRAVEN.

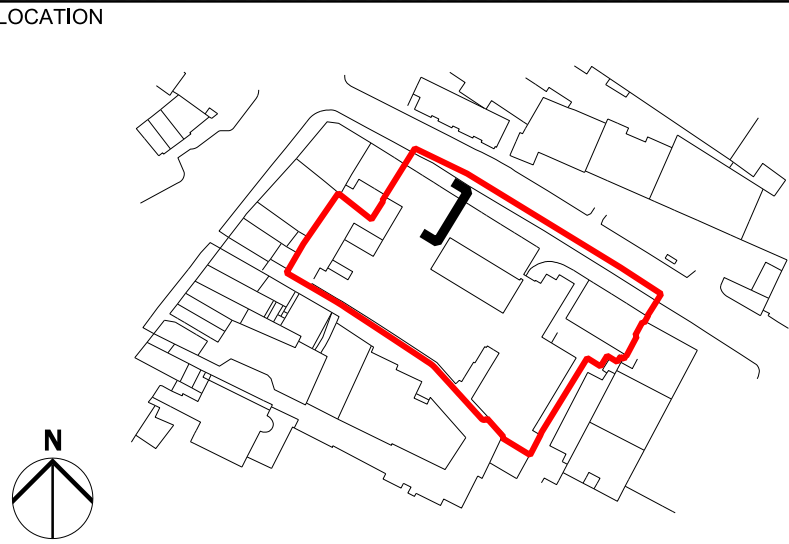
REV	DATE
P01	06/12/18 Issued for Planning



NOTE

1. Do not scale from this drawing.
2. All dimensions to be checked on site by the contractor and such dimensions to be his responsibility.
3. Report all drawing errors, omissions and discrepancies to the architect.
4. This document may be issued in an uncontrolled CAD format to enable others to use it as background information to make alterations and/or additions. In that instance the file will be accompanied by a PDF version. It is for those making such alterations and additions to ensure that they make use of current background information.

AHMM Ltd accepts no liability for any such alterations or additions to the background information or arising out of changes to background information which occur prior to alterations or additions being made.



ALLFORD HALL MONAGHAN MORRIS						
ARCHITECTS Ltd 2ND FLOOR, BLOCK C, 5-23 OLD STREET LONDON EC1V 9HL TEL 020 7261 5261 FAX 020 7261 5123 WEB WWW.AHMM.CO.UK						
job title NEW CITY COURT						
drawing title / location GEORGIAN TOWNHOUSES EXISTING SECTION FF - no.10						
drawn by ML	checked HT	scale 1:75@A1; 1:150@A3	status PLANNING			
project 14032	zone G	type -	classification (01)	drawing no P306	revision P01	