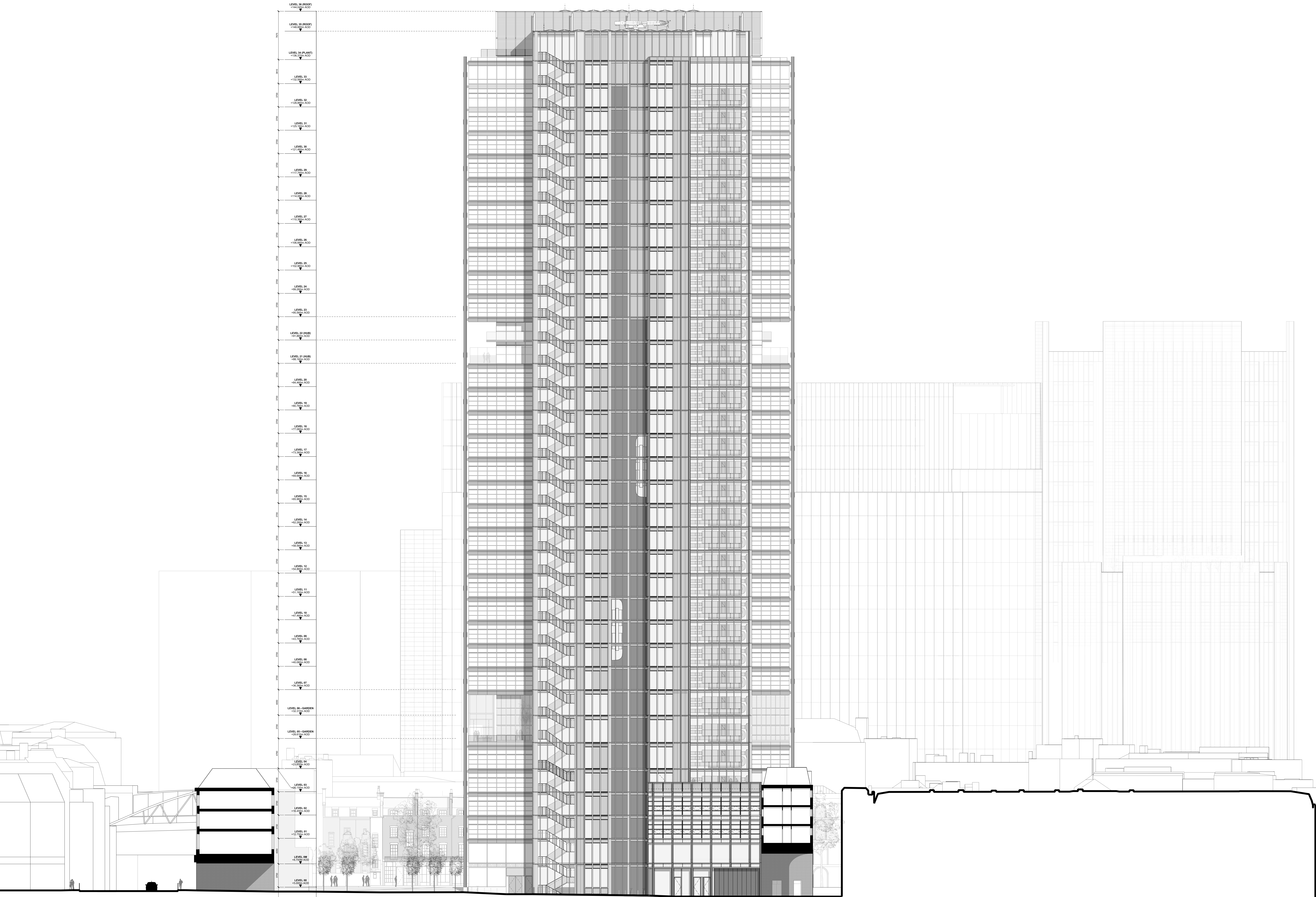


KEY



P01 06/12/18 Issued for Planning

REV DATE Revision Note

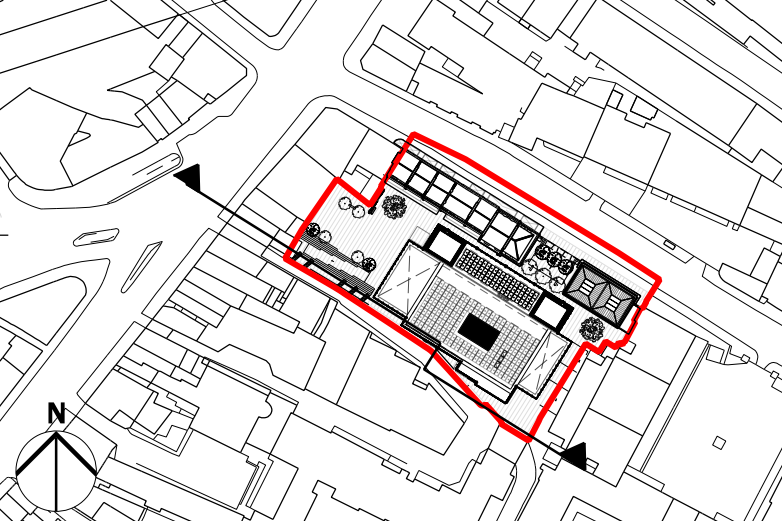
SCALE 1:200

0 1 5 10 20

NOTE

1. Do not scale from this drawing.
2. All dimensions to be checked on site by the contractor and such dimensions to be the responsibility of the contractor.
3. Report all drawing errors, omissions and discrepancies to the architect.
4. This document may be issued in an uncontrolled CAD format to enable others to use it as background information to make alterations and/or additions. In that instance the file will be accompanied by a PDF version. It is for those making such alterations and additions to ensure that they make use of current background information. AHMM Ltd accepts no liability for any such alterations or additions to the background information or arising out of changes to background information which occur prior to alterations or additions being made.

LOCATION



ALLFORD HALL MONAGHAN MORRIS

ARCHITECTS LLP
MORELANDS, 5-23 OLD STREET LONDON EC1V 9HL
TEL 020 7251 5261 FAX 020 7251 5123 WEB WWW.AHMM.CO.UK

S&B title

NEW CITY COURT

drawing title / location

**SOUTH ELEVATION
PROPOSED**

drawn by	checked	scale	status
AW	HT	1:200@A0 1:400@A2	PLANNING

project	zone	source	classification	drawing no.	revision
14032	X	-	(00) P202	P01	