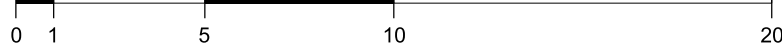


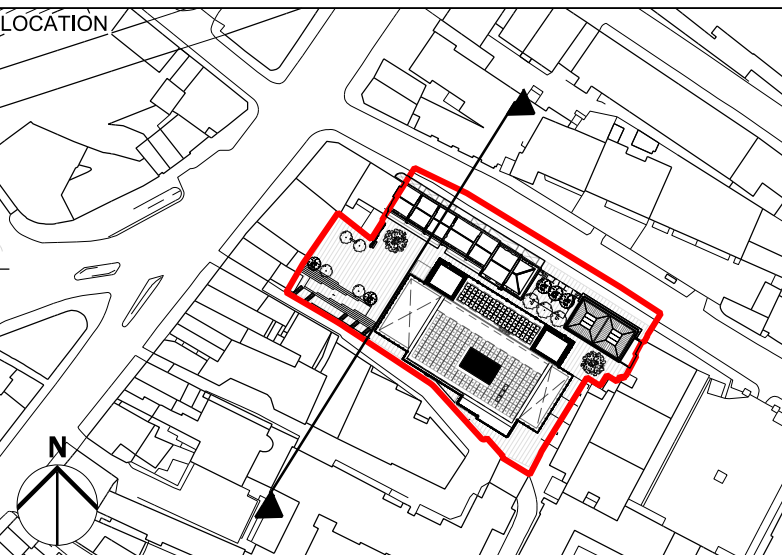
P01 06/12/18 Issued for Planning

REV DATE Revision Note

SCALE 1:200



NOTE
1. Do not scale from this drawing.
2. All dimensions to be checked on site by the contractor and such dimensions to be the responsibility.
3. Report all drawing errors, omissions and discrepancies to the architect.
4. This document may be issued in an uncontrolled CAD format to enable others to use it as background information to make alterations and/or additions. In that instance the file will be accompanied by a PDF version. It is for those making such alterations and additions to ensure that they make use of current background information. AHMM Ltd accepts no liability for any such alterations or additions to the background information or arising out of information which occur prior to alterations or additions being made.



ALLFORD HALL MONAGHAN MORRIS
ARCHITECTS LLP
MORELANDS, 5-23 OLD STREET LONDON EC1V 8HL
TEL: 020 7251 5261 FAX: 020 7251 5123 WEB: WWW.AHMM.CO.UK
JOB NO:

NEW CITY COURT

drawing title / location

WEST ELEVATION
PROPOSED

drawn by checked issued status

AW HT 1:200@A0 1:400@A2 PLANNING

project zone source classification drawing no. revision

14032 X - (00) P204 P01