

KEY:

SITE BOUNDARY

EXISTING FOUL WATER SEWER

EXISTING FOUL WATER MANHOLE

POTENTIAL CONNECTION POINT FOR NEW FOUL / SURFACE WATER DRAINAGE CONNECTIONS SUBJECT TO DETAILED DESIGN

PROPOSED FOUL WATER DISCHARGE RATE (SUBJECT TO DETAILED DESIGN)

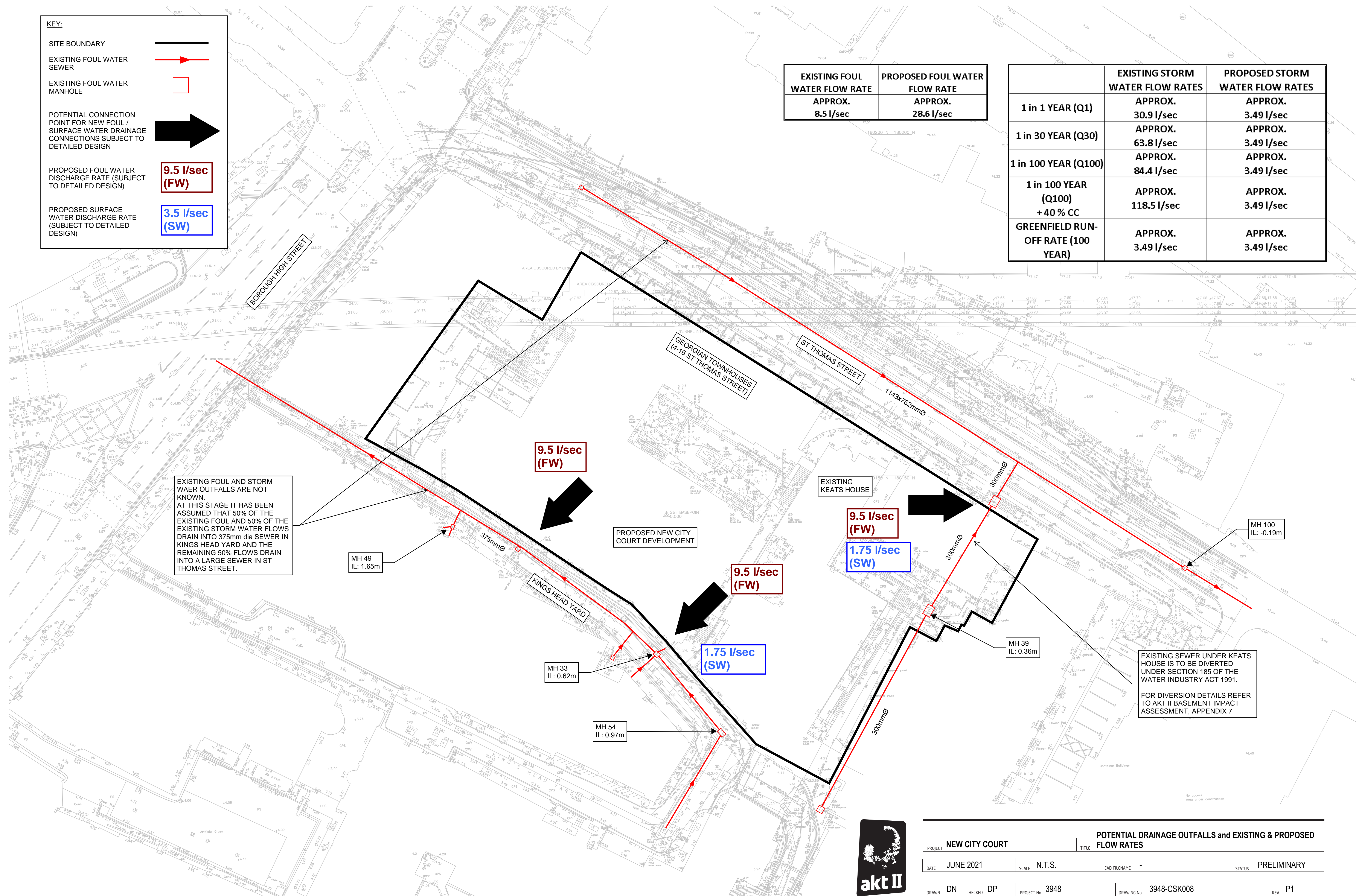
PROPOSED SURFACE WATER DISCHARGE RATE (SUBJECT TO DETAILED DESIGN)

9.5 l/sec (FW)

3.5 l/sec (SW)

EXISTING FOUL WATER FLOW RATE	PROPOSED FOUL WATER FLOW RATE
APPROX. 8.5 l/sec	APPROX. 28.6 l/sec

	EXISTING STORM WATER FLOW RATES	PROPOSED STORM WATER FLOW RATES
1 in 1 YEAR (Q1)	APPROX. 30.9 l/sec	APPROX. 3.49 l/sec
1 in 30 YEAR (Q30)	APPROX. 63.8 l/sec	APPROX. 3.49 l/sec
1 in 100 YEAR (Q100)	APPROX. 84.4 l/sec	APPROX. 3.49 l/sec
1 in 100 YEAR (Q100) + 40 % CC	APPROX. 118.5 l/sec	APPROX. 3.49 l/sec
GREENFIELD RUN-OFF RATE (100 YEAR)	APPROX. 3.49 l/sec	APPROX. 3.49 l/sec



NEW CITY COURT				POTENTIAL DRAINAGE OUTFALLS and EXISTING & PROPOSED FLOW RATES			
PROJECT	DATE	CHECKED	STATUS	TITLE	SCALE	CAD FILENAME	STATUS
NEW CITY COURT	JUNE 2021	DP	PRELIMINARY		N.T.S.	-	
DRAWN	DN	CHECKED	PROJECT No.	DRAWING No.			REV
DN	DP		3948	3948-CSK008			P1