

REVISION NOTE: Key levels added to all existing drawings.

NOTE: Existing floor conditions vary. Levels indicated were taken from Plowman Craven's survey information and are averages, not absolute minimums or maximums. Levels to be confirmed post strip out.

AOD +15.405 LEVEL 03 (OFFICE)  
FFL NO.16

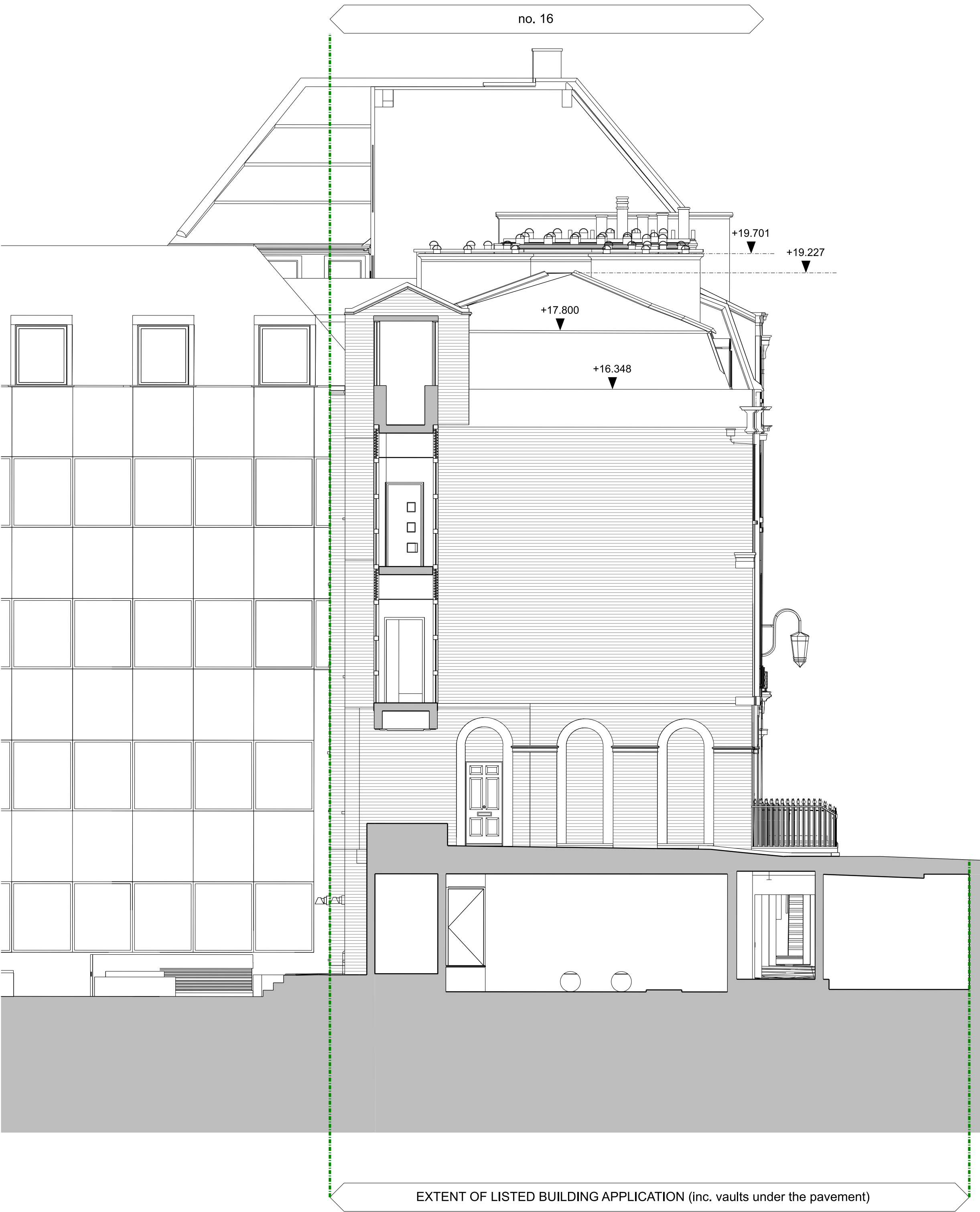
AOD +12.375 LEVEL 02 (OFFICE)  
FFL NO.16

AOD +8.590 LEVEL 01 (OFFICE ) FFL  
NO.16

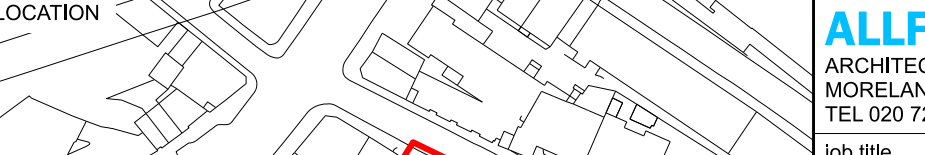
AOD +4.970 LEVEL GF (OFFICE)  
FFL NO.16

AOD +2.090 LEVEL LG (OFFICE)  
FFL NO.16

AOD +0.000



01 EXISTING EAST ELEVATION

<div></div> LISTED BUILDING CONSENT BOUNDARY		REV	DATE	1 : 75		SCALE	NOTE	LOCATION	ALLFORD HALL MONAGHAN MORRIS							
		P01	16/04/21 Issued for Planning						ARCHITECTS Ltd MORELANDS, 5-23 OLD STREET LONDON EC1V 9HL TEL 020 7251 5261 FAX 020 7251 5123 WEB WWW.AHMM.CO.UK							
				SOURCE:		1. Do not scale from this drawing. 2. All dimensions to be checked on site by the contractor and such dimensions to be his responsibility. 3. Report all drawing errors, omissions and discrepancies to the architect. 4. This document may be issued in an uncontrolled CAD format to enable others to use it as background information to make alterations and/or additions. In that instance the file will be accompanied by a PDF version. It is for those making such alterations and additions to ensure that they make use of current background information. AHMM Ltd accepts no liability for any such alterations or additions to the background information or arising out of changes to background information which occur prior to alterations of additions being made.			job title NEW CITY COURT							
				This drawing is based on received 3D BIM survey from Plowman Craven.					drawing title / location GEORGIAN TOWNHOUSES EXISTING EAST ELEVATION							
		drawn by	checked	scale					status							
		SM	HT	1:75@A1; 1:150@A3					PLANNING							
		project	zone	source	classification	drawing no.	revision									
		20065	G	A	(01) P202	P01										