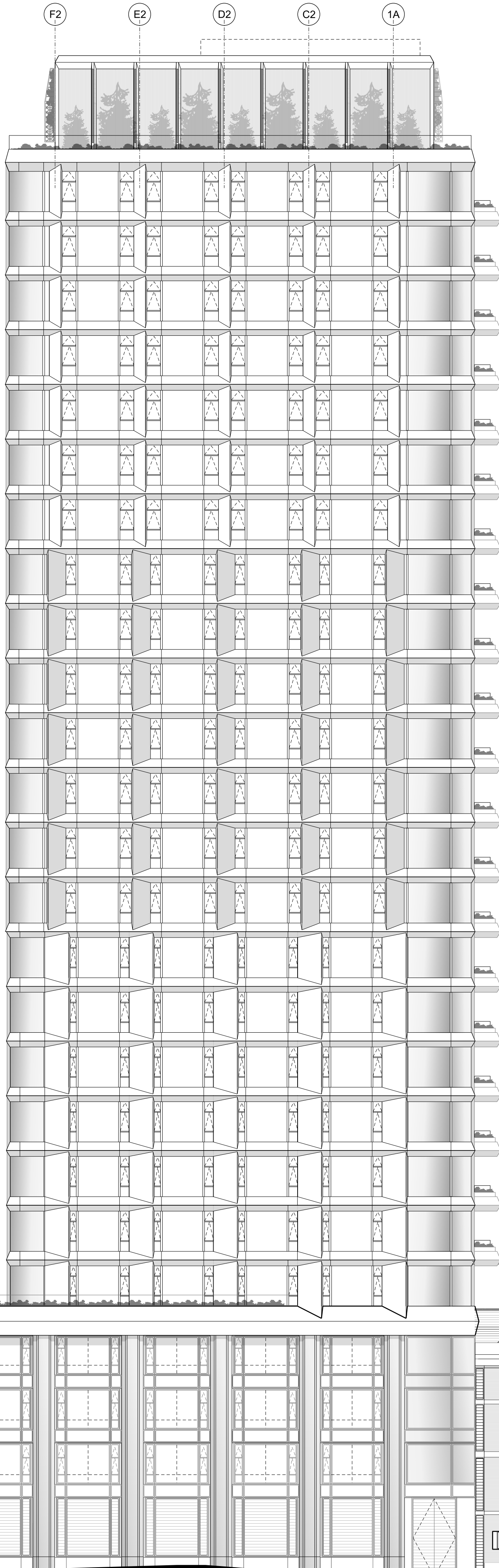


LEVEL 26 - TOP OF  
MULTIFRAME  
+10.00m AOD  
LEVEL 25 - ROOF  
+9.50m AOD  
LEVEL 25 - TERRACE MEZ  
3120  
LEVEL 24 - TERRACE  
4200  
LEVEL 23  
3700  
LEVEL 22  
3700  
LEVEL 21  
3700  
LEVEL 20  
3700  
LEVEL 19  
3700  
LEVEL 18  
3700  
LEVEL 17  
3700  
LEVEL 16  
3700  
LEVEL 15  
3700  
LEVEL 14  
3700  
LEVEL 13  
3700  
LEVEL 12  
3700  
LEVEL 11  
3700  
LEVEL 10  
3700  
LEVEL 09  
3700  
LEVEL 08  
3700  
LEVEL 07  
3700  
LEVEL 06  
3700  
LEVEL 05  
3700  
LEVEL 04  
3700  
LEVEL 03  
4000  
LEVEL 02  
3700  
LEVEL 01  
3700  
LEVEL 00  
5000



NOTE: Shard  
Quarter shown  
dashed - the  
building is  
behind the field  
of view in this  
elevation  
drawing.

KEY

P02 06/07/21 Issued for Planning - Addendum  
P01 16/04/21 Issued for Planning

REV DATE

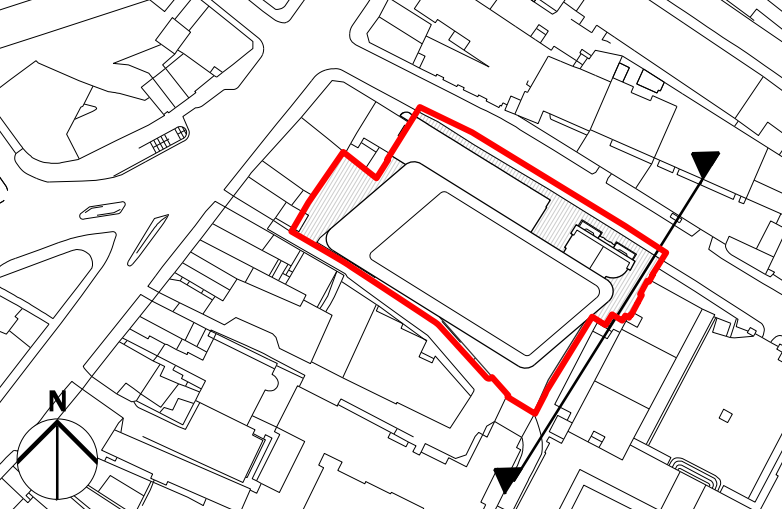
SCALE 1:200

0 1 5 10 20

NOTE

1. Do not scale from this drawing.
2. All dimensions to be checked on site by the contractor and such dimensions to be his responsibility.
3. Report all drawing errors, omissions and discrepancies to the architect.
4. This document may be issued in an uncontrolled CAD format to enable others to use it as background information to make alterations and/or additions. In that instance the file will be accompanied by a PDF version. It is for those making such alterations and additions to ensure that they make use of current background information. AHMM Ltd accepts no liability for any such alterations or additions to the background information or arising out of changes to background information which occur prior to alterations of additions being made.

LOCATION



**ALLFORD HALL MONAGHAN MORRIS**  
ARCHITECTS LLP  
MORELANDS, 5-23 OLD STREET LONDON EC1V 9HL  
TEL: 020 7251 5261 FAX: 020 7251 5123 WEB: WWW.AHMM.CO.UK

999 000

NEW CITY COURT

drawing title / location  
**EAST ELEVATION  
PROPOSED**

drawn by checked by issue status  
KS NM 1:200@A0 1:400@A2 PLANNING

project zone source classification drawing no. revision  
20065 X A (00) P203 P02