

KEY	
—	Planning Application Boundary

REV	DATE
P01	16/04/21 Issued for Planning

SOURCE:

This drawing is adapted from Plowman Craven survey drawing 35722F-05B-3F-OS.

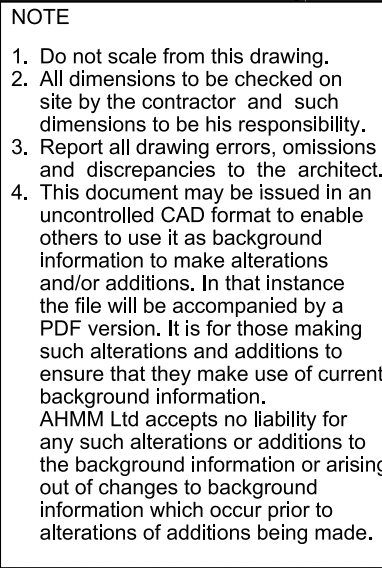
SCALE

1 : 200

0 1 5 10 20

NOTE

1. Do not scale from this drawing.
2. All dimensions to be checked on site by the contractor and such dimensions to be his responsibility.
3. Report all drawing errors, omissions and discrepancies to the architect.
4. This document may be issued in an uncontrolled CAD format to enable others to use it as background information to make alterations and/or additions. In that instance the file will be accompanied by a PDF version. It is for those making such alterations and additions to ensure that they make use of current background information.
AHMM Ltd accepts no liability for any such alterations or additions to the background information or arising out of changes to background information which occur prior to alterations of additions being made.



LOCATION			
drawn by	checked	scale	status
GO	HT	1:200@A1; 1:400@A3	PLANNING
project	zone	source	classification
20065	X	A	(01) P123 P01

ALLFORD HALL MONAGHAN MORRIS

ARCHITECTS Ltd
MORELANDS, 5-23 OLD STREET LONDON EC1V 9HL
TEL 020 7251 5261 FAX 020 7251 5123 WEB WWW.AHMM.CO.UK

job title

NEW CITY COURT

drawing title / location

SURVEY DRAWING
EXISTING LEVEL 03