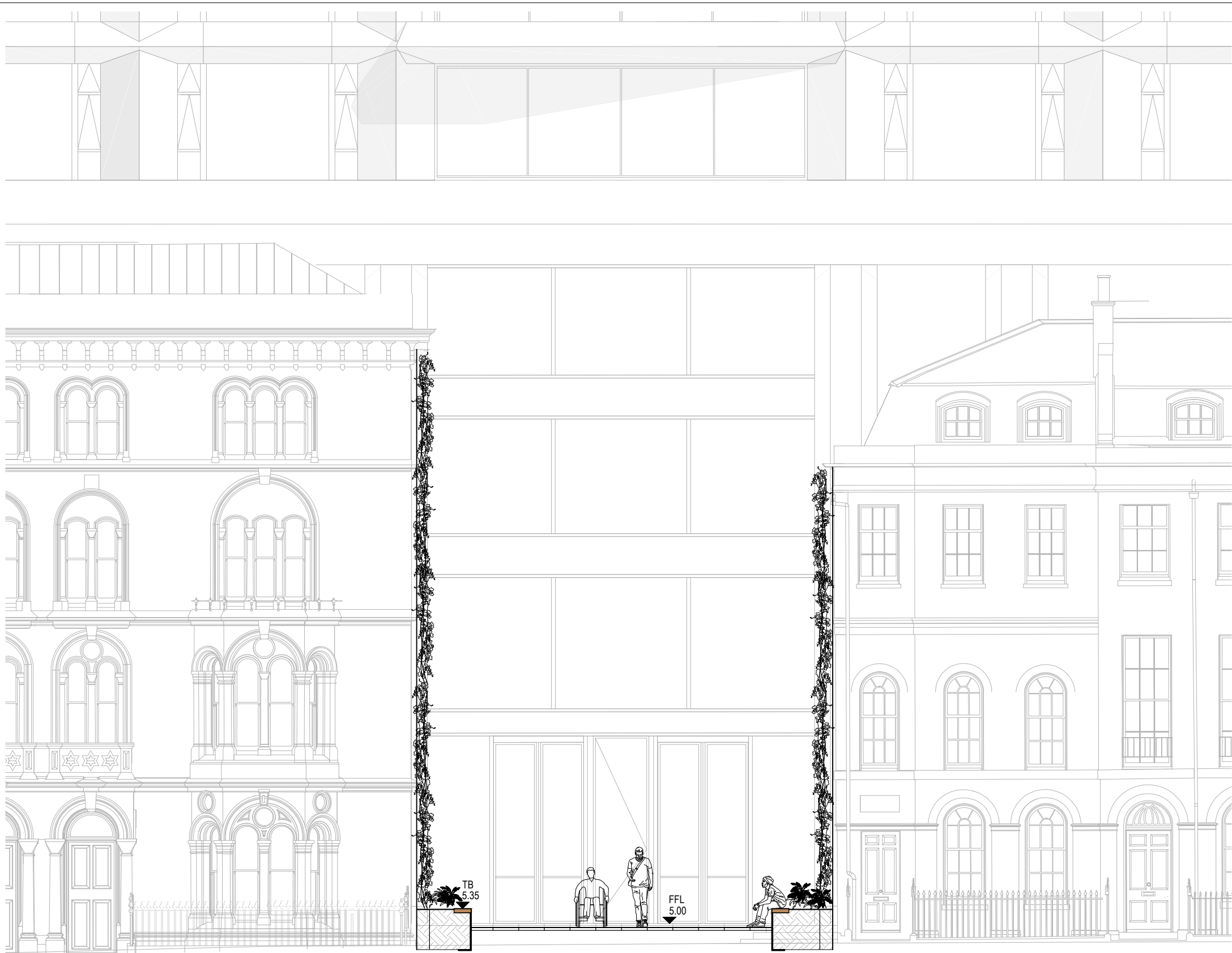
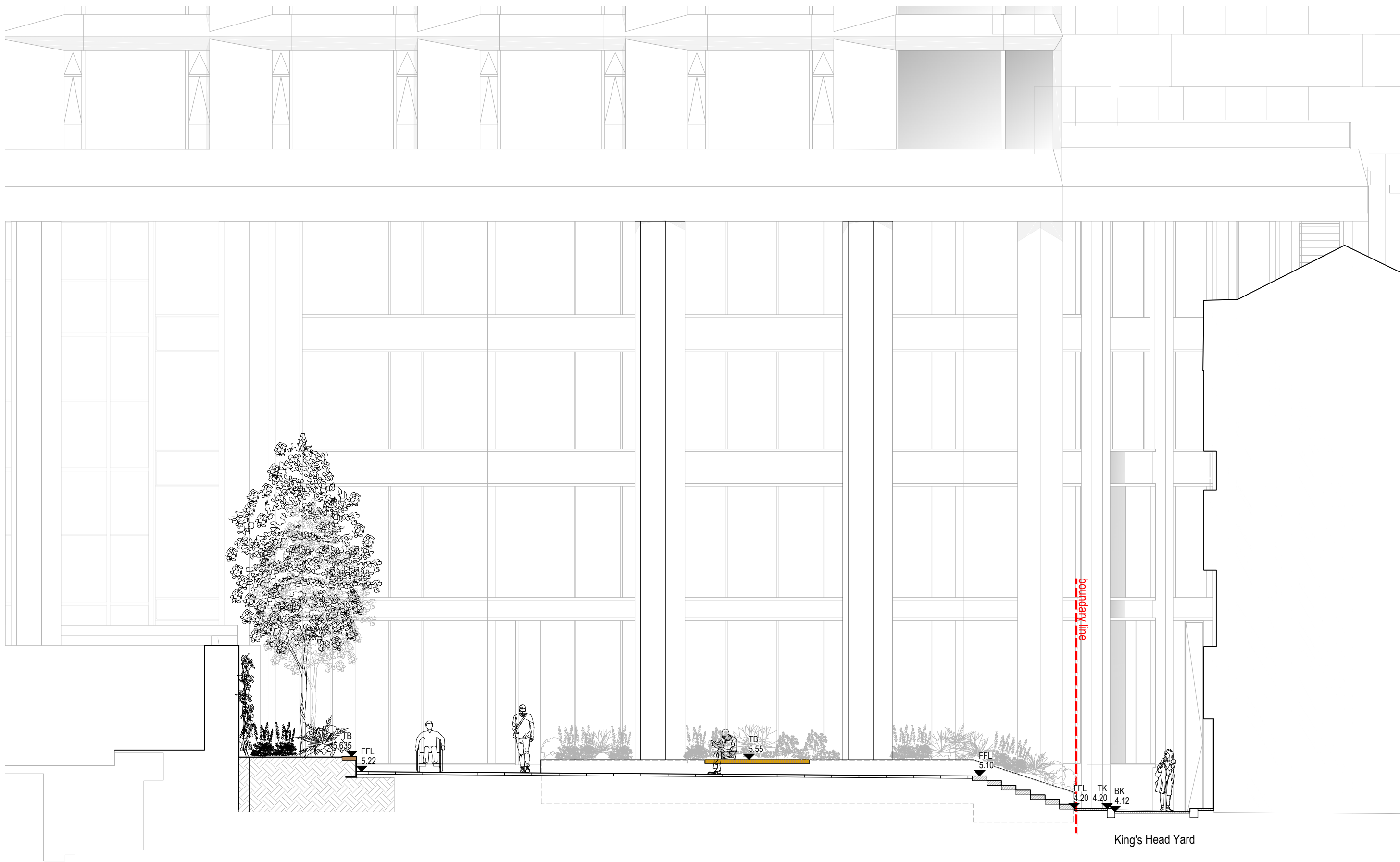


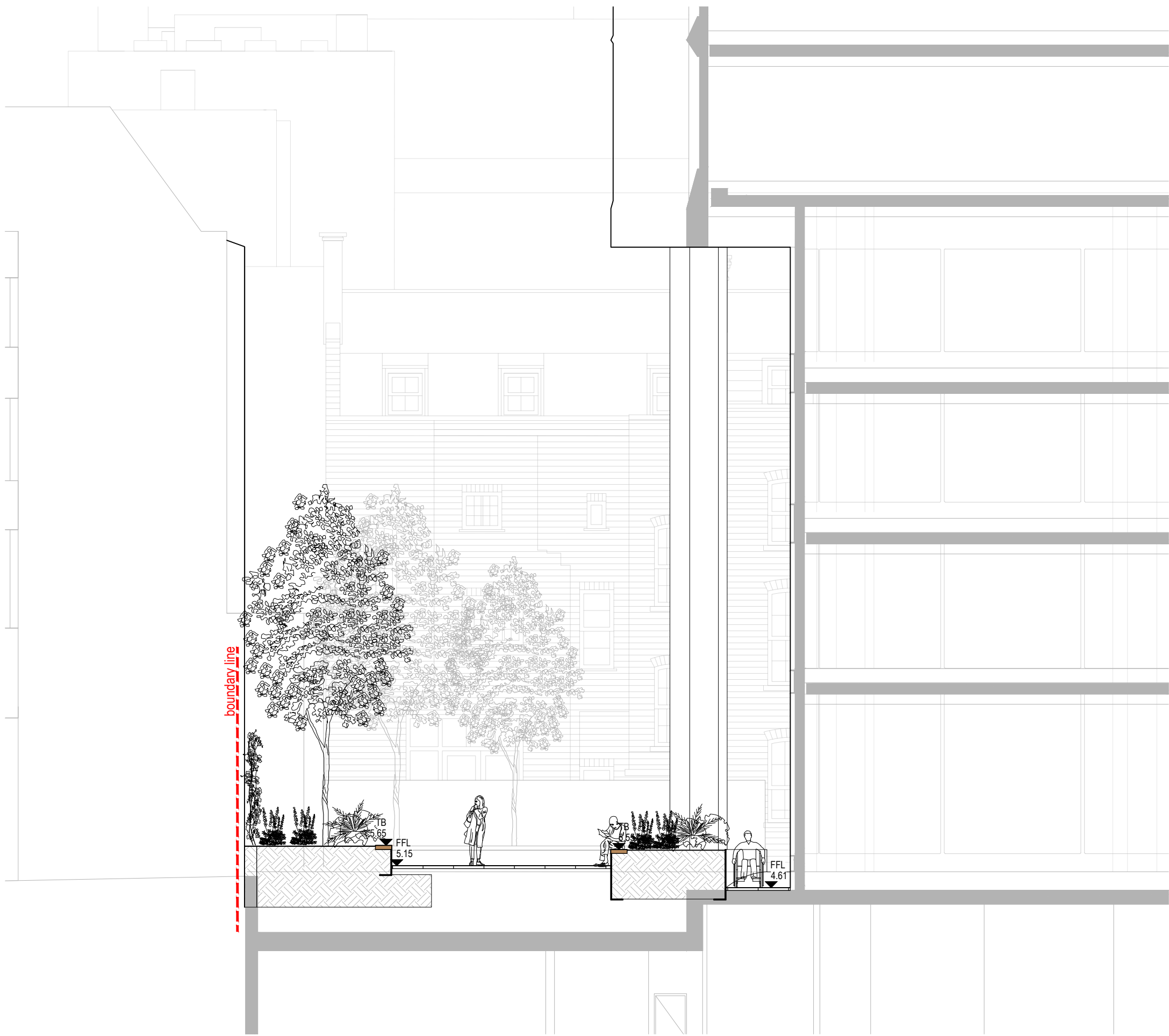
1 GENERAL SECTION AA - ST THOMAS STREET ENTRANCE - LONGITUDINAL
GS01 SCALE 1:100



2 GENERAL SECTION BB - ST THOMAS STREET ENTRANCE - TRANSVERSAL
GS01 SCALE 1:100



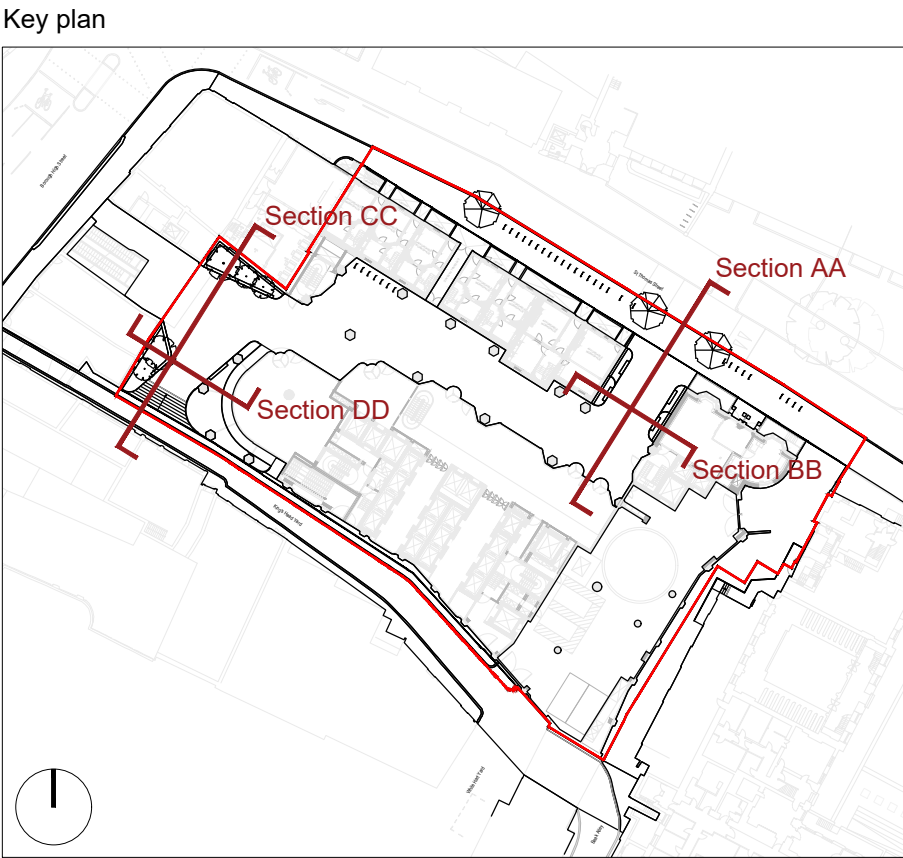
3 GENERAL SECTION CC - KING'S HEAD COURTYARD - LONGITUDINAL
GS01 SCALE 1:100



4 GENERAL SECTION DD - KING'S HEAD COURTYARD - TRANSVERSAL
GS01 SCALE 1:100

0m 1 5 10

General Notes:
All architectural, structural, mechanical, electrical and utilities items are shown for legibility purposes only, the relevant Architect or Engineer's drawings and specification must be referred to for such items.
Do not scale off this drawing. Use figured dimensions only. All dimensions and levels shown on drawings are subject to verification on site. MRG Studio does not accept responsibility for accuracy of survey information.
This drawing is copyright.



01	16/04/2021	JFP	JM	PLANNING SUBMISSION	
revision	date	by	appr	description	

landscape architect
MRG Studio

client
GPE (St Thomas Street) Limited

project
New City Court

drawing title
General Sections
Ground Floor

drawing number
166-NCC2-GS01

scale	date	revision
1:100@ A1 1:200 @ A3	26 March 2021	01