



EVIDENCE IN CHIEF

ALASDAIR YOUNG MA MSc

(HISTORIC ENGLAND)

New City Court, 4-26 St Thomas Street, London SE1 9RS

**PINS refs: APP/A5840/W/22/3290473; APP/A5840/Y/22/3290477;
APP/A5840/W/22/3290483 & APP/A5840/Y/22/3290490**

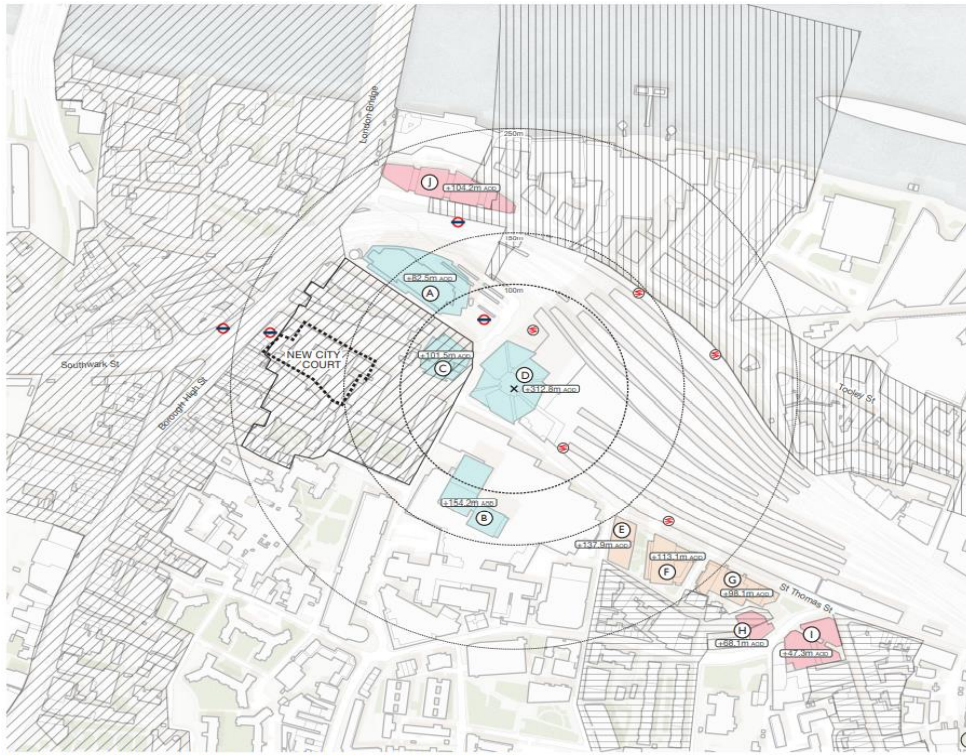
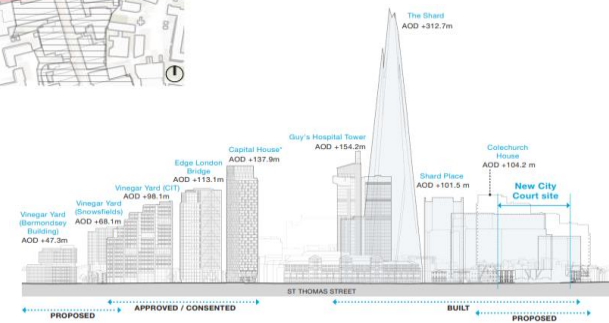


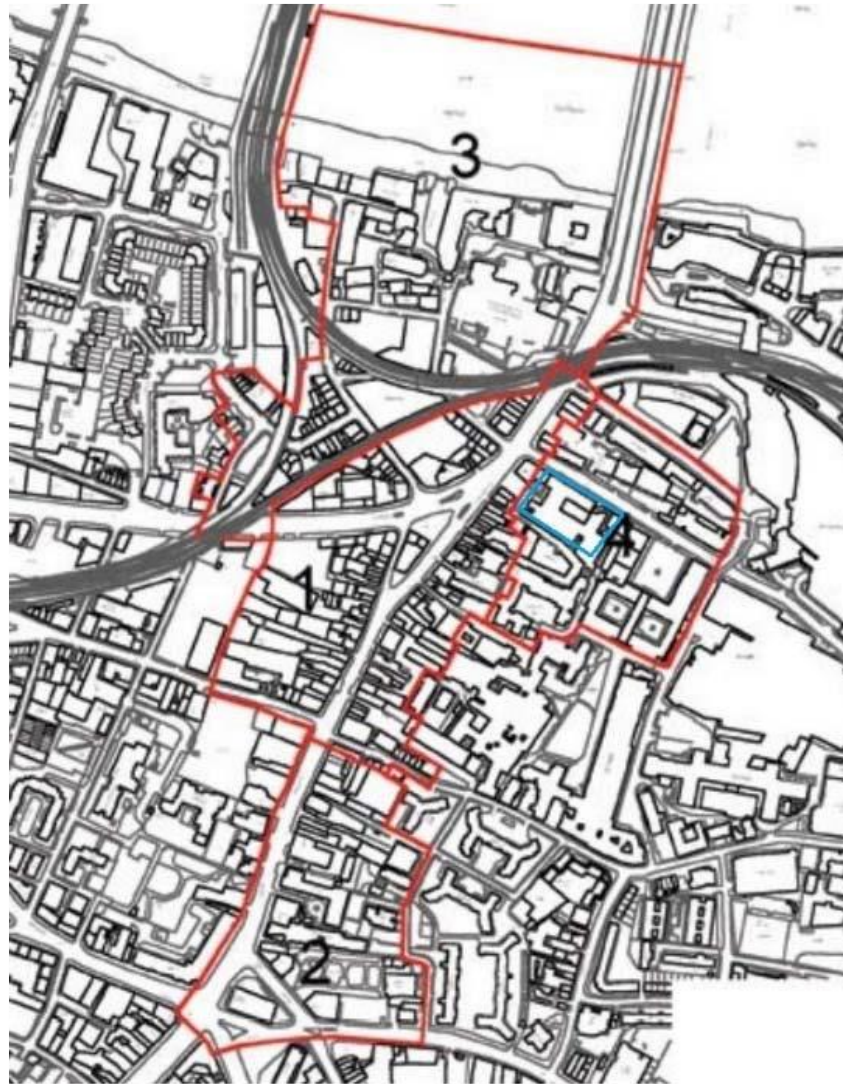
Fig. 115: Plan of local area showing current and consented tall buildings in proximity to the Shard



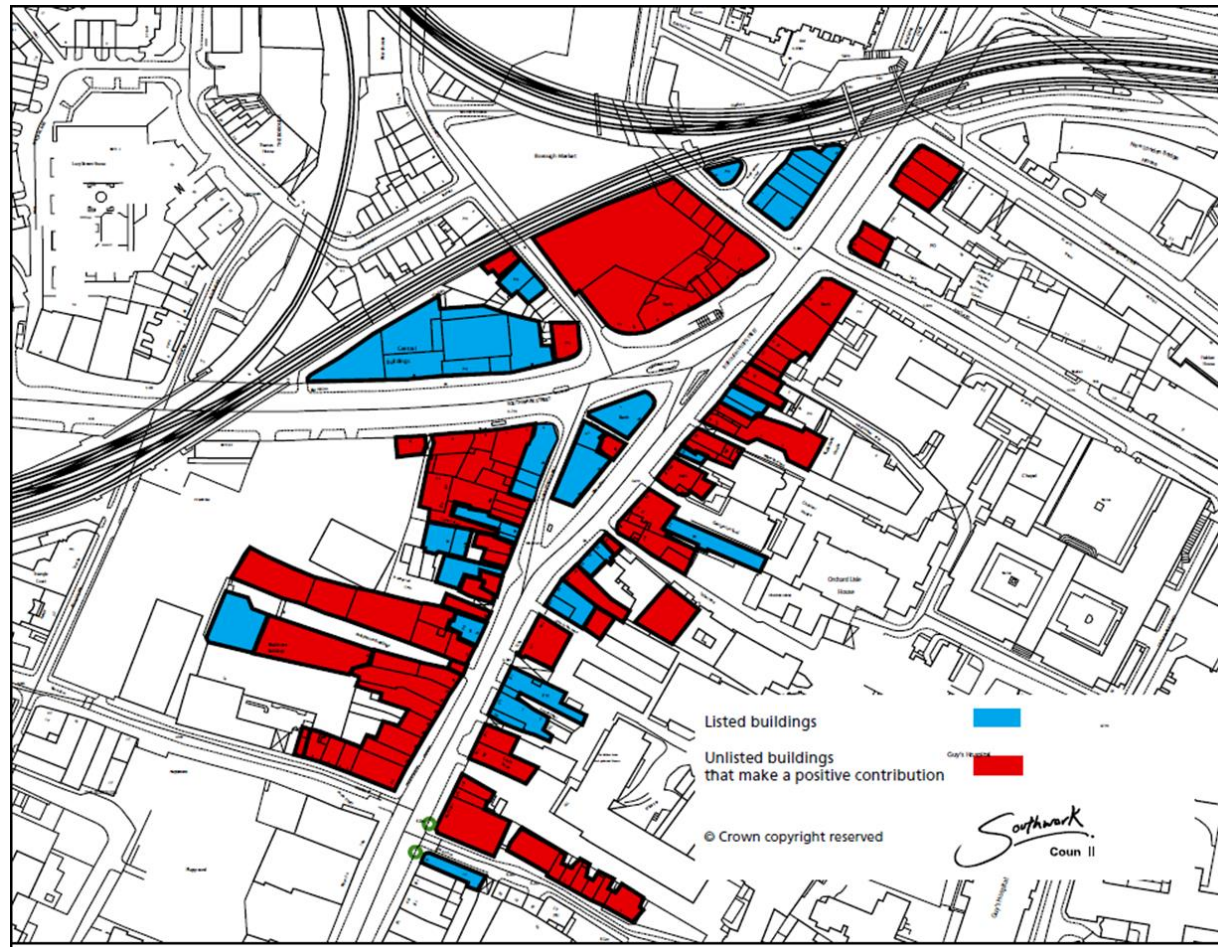
Slide 2 - (top left) Plan of local area showing current and consented tall buildings in proximity to the Shard, Figure 155 of Simon Alford's Proof of Evidence, p34; (bottom right) St Thomas Street existing elevation with proposed, consented and built tall buildings - looking south, Figure 126 of Simon Alford's Proof of Evidence, p36.



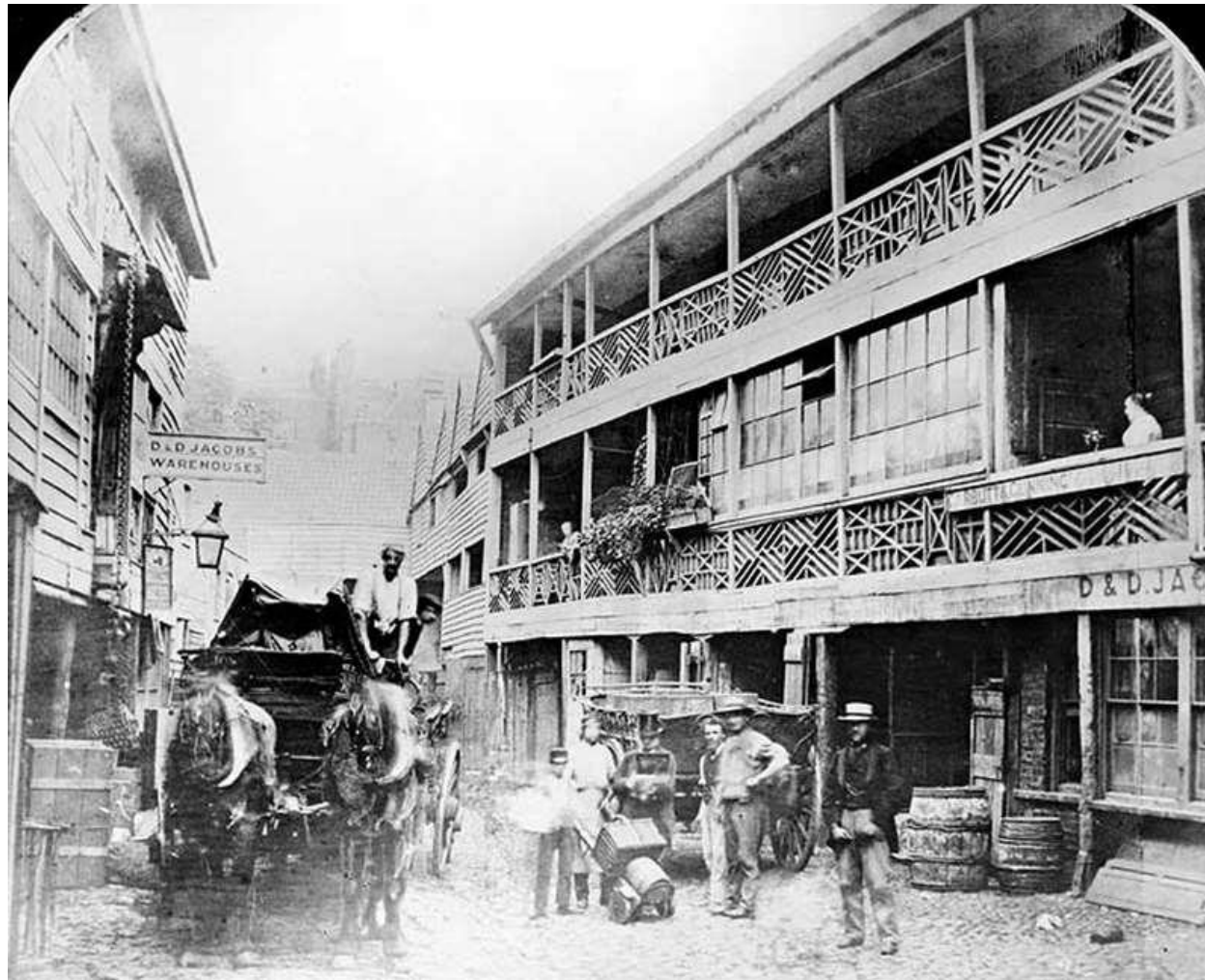
Slide 4 – (top right) New London Bridge House (left), Southwark Towers (middle), Guy's Hospital Tower (right), 2009: Source Google Maps (2022), Figure 107 of Simon Allford's Proof of Evidence, p31; (bottom left) RAF Aerial Photography 7th August 1944 National Monuments Record Office (Historic England), CDA.13, p448.



Slide 5 - Extract from the CAA, (p4) annotated to include approximate location of the Appeals Site (in blue), Alasdair Young Proof of Evidence Appendix 1.



Slide 6 - Extract from the CAA (p42, Sub Area 1) indicating the quality of the buildings along Borough High Street and the east end of Southwark Street and survival of the historic street pattern (n.b some buildings at north end were demolished in c2010 as part of rail improvements), CDE.06, p42.



Slide 7 - The King's Head Inn (1885), Alasdair Young Proof of Evidence Appendix 3.



Slide 8 - Extract from the Goad Map (1887), Alasdair Young Proof of Evidence Appendix 4.



Slide 9 - Existing view into King's Head Yard from Borough High Street, Figure 88 (left); Existing view from in front of the Old King's Head Pub (left) looking west, Figure 89 (right), both Simon Allford Proof of Evidence p29.



Slide 10 - Kings Head Yard looking west (author's image), Alasdair Young Proof of Evidence Appendix 6.



Slide 11 - Visualisation of King's Head Yard looking west, Figure 224 (bottom left); Visualisation of King's Head Yard looking east Figure 227 (bottom right); Visualisation of King's Head Square Figure 222 (top right); Visualisation of New Yard Figure 223 (top left), all Simon Allford Proof of Evidence, p87.



Slide 12 - Visualisation of King's Head Courtyard, Figure 385 (left); Visualization of the King's Head Courtyard (left) and enhanced King's Head Yard, Figure 388 (right), both Simon Allford Proof of Evidence, p152.



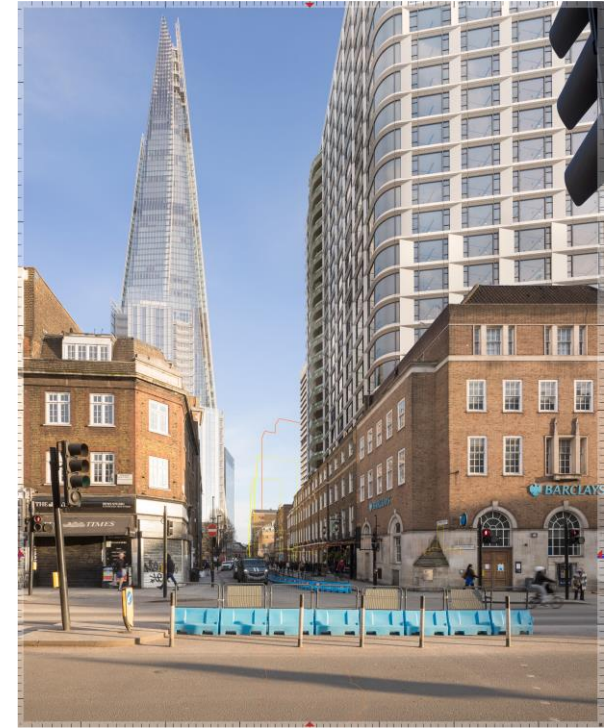
Slide 13 – View 44: Southwark Street / Stoney Street (cumulative), 2018 Scheme CDA.12, p235, Fig 16 | View 36: Southwark Street / Stoney Street (cumulative), 2021 Scheme, CDB.14, p19, all Alasdair Young Proof of Evidence, p46.



Slide 14 – (left) View looking west along St Thomas Street, Elizabeth Adams Proof of Evidence, Figure 19, p33; (right) The Shard (back) and Shard Place (front) as seen from existing St Thomas Street, Simon Allford Proof of Evidence Figure 101, p30.



Slide 15 – Original; 2018 View 50, TVIBHA CDA.12 p257; 2021 View 42, TVIBHA CDB.14 p231.



Slide 16 - Original; 2018 amended View 54, TVIBHA CDA.57 pg 163; 2021 View 46, TVIBHA CDB.33 pg 249.



Slide 17 - CGI of Proposed Shopfronts, CDA.21, p32.



Slide 18 - VR walkthrough stills of the 2021 Scheme, Simon Allford Proof of Evidence, p3.



Slide 19 – Figures 25 and 26 of Alasdair Young Proof of Evidence, p54.



Slide 20 – (left) Guy's Hospital Engraving, William Woolnoth, c1820, Alasdair Young Proof of Evidence, Appendix 14; (right) Figure 1-23 of the Heritage Statement – Guy's Hospital Courtyard, CDA.18, p65.



Slide 21 – Original; View 49, 2018 TVIBHA CDA.12, p253; View 41 2021 TVIBHA CDB.14, p227.



Slide 22 - Chapel interior looking west (author's image), Alasdair Young Proof of Evidence, Appendix 16.



Slide 23 - General Views of London (c1690) – Southwark Cathedral in foreground, Alasdair Young Proof of Evidence, Appendix 17.



Slide 24 – (left) View 24, CDA.12-1 2018 TVIBHA p. 152; (right) View 56.2, CDA.12-1 2018 TVIBHA p284.



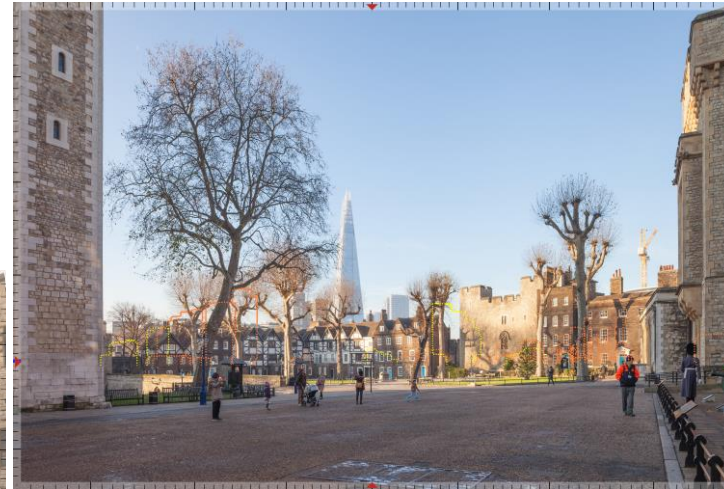
Slide 25 – Views 56.2 to 56.5, 2018 TVIBHA CDA.18, pgs 285 to 297.



Slide 26 – Views 50 to 52, 2021 TVIBHA CDB.14, pgs 263 to 271.



Slide 27 – (left) View 24, 2018 TVIBHA, CDA57. App B; (right) View 18, 2021 TVIBHA, CDB.14.



Slide 28 - Tower of London: Inner Ward, north of the White Tower cumulative image from Peter Stewart Proof of Evidence, pgs 49 to 53.