

Do not scale from this drawing. This drawing is based on dimensional survey information provided by others. The architect cannot accept responsibility for the accuracy of this survey information. All dimensions are shown in metric. This drawing remains the copyright of Stitch Studio Ltd.

DRAWING NOTES

Material key

Bricks

- B1** Red brick with dark mortar
B2 Red brick with light mortar
B3 Dark grey brick light mortar
B4 Light grey brick light mortar
B5 White brick light mortar
B6 Glazed red brick

Detail

- B10** Solider course
B11 Half brick reveal
B12 Precast concrete panel, dyed red
B13 Precast concrete stringer course
B14 Precast concrete panel, dyed white

Windows

- W1** Side hung window, frame colour RAL 7002 or similar, full brick reveal
W2 Side hung window, frame colour RAL 3007 or similar, full brick reveal
W3 Side hung window with Juliette balcony, frame and railing colour RAL 3007, full brick reveal
W4 Fixed commercial glazing with louvre above, frame colour RAL 3007, full brick reveal

Doors

- D1** Glazed commercial door with louvre above, frame colour and louvre RAL 3007 or similar, full brick reveal
D2 Louvred plant, refuse door, frame RAL 3007, full brick reveal
D3 Escape door, RAL 7002, full brick reveal
D4 Escape door, RAL 3007, full brick reveal

Balustrade

- R1** Railing and handrail powder coated metal flats colour, RAL to match window frame.

Rainwater good

- F1** Square section rainwater pipe, RAL to match window frame

Miscellaneous

- M1** Aluminium coping
M2 Vent
M3 Louvred acoustic screen, RAL to match window frame

Telford House

ISSUE REASON FOR ISSUE DATE



stitch.

Suite 6, Fusion House, 28 Rochester Place
London NW1 9DF
www.stitcharchitects.co.uk
+44 (0)20 3617 8725

PROJECT

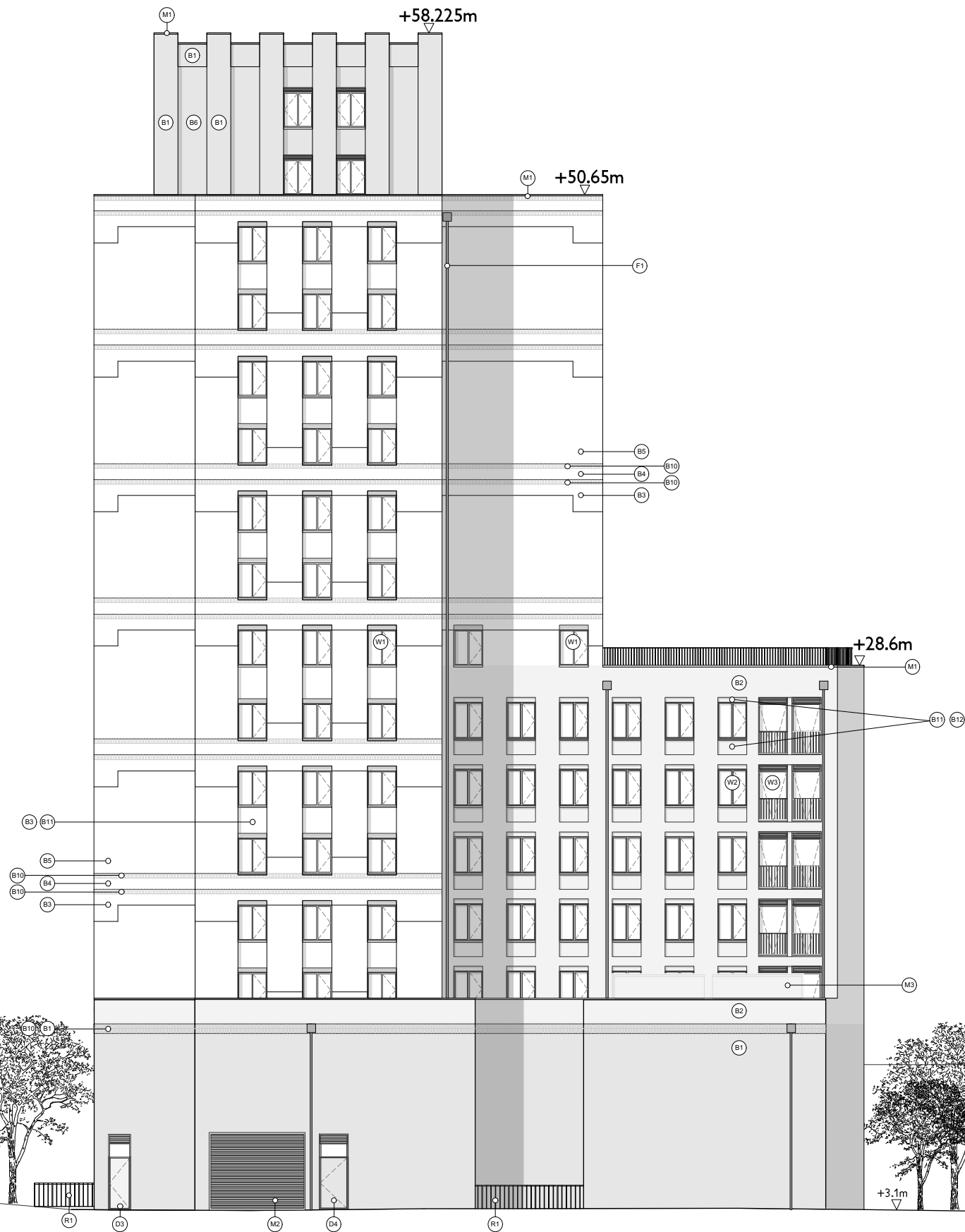
Avonmouth House

PROJECT CODE CLIENT
21235 Tribe Student Housing

DRAWING TITLE STATUS
Proposed building - North West elevation Planning

SCALE SHEET DATE OF FIRST ISSUE
1:250 @ A3 A3 22.10.21

DRAWING NUMBER REVISION
21235-STCH-XX-ZZ-DR-A-1200 -



343
Newington Causeway

Avonmouth Street

Avonmouth⁺ House
(Existing building in front)

49-51 Tiverton St

0 5 10 15 20 M