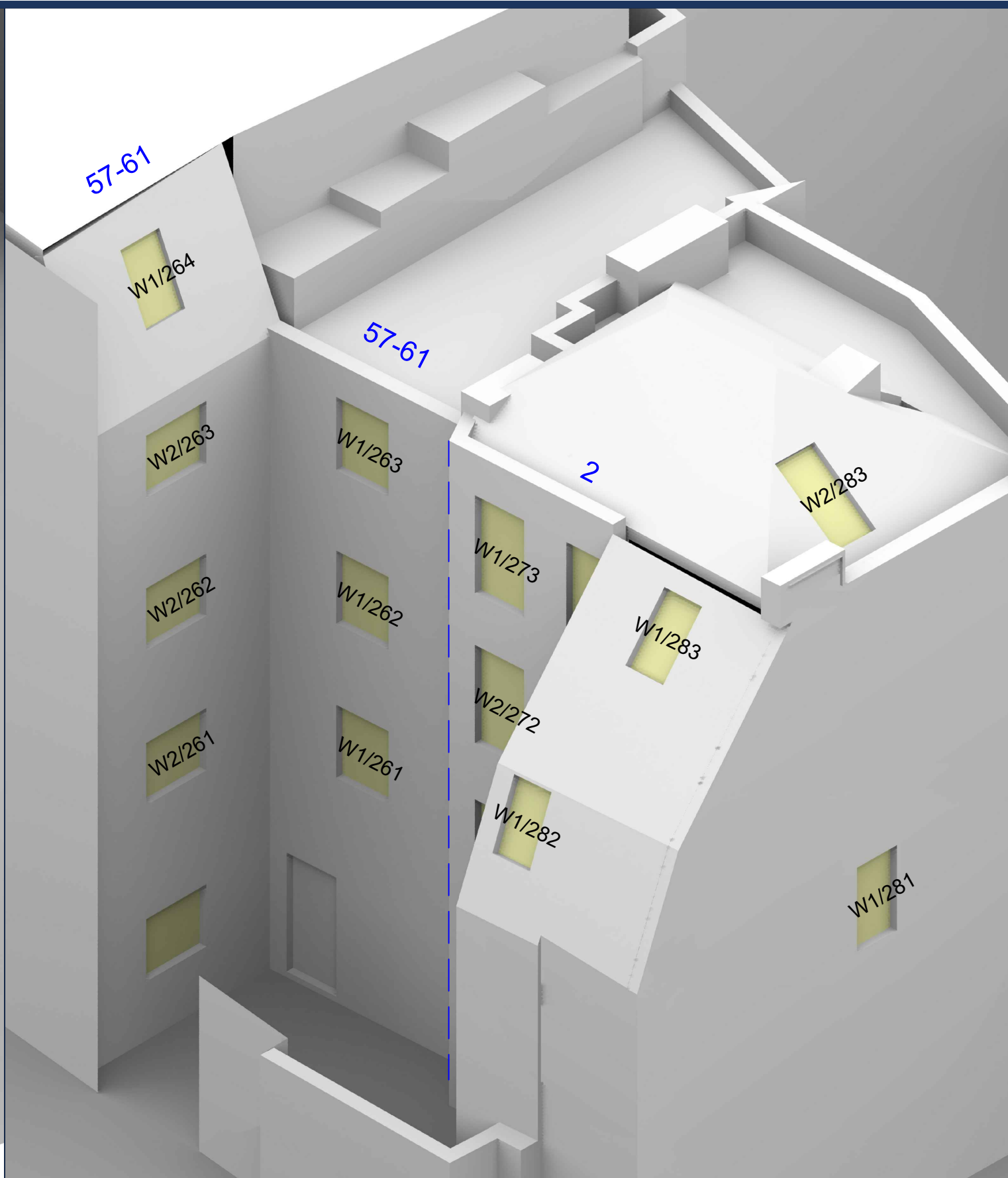
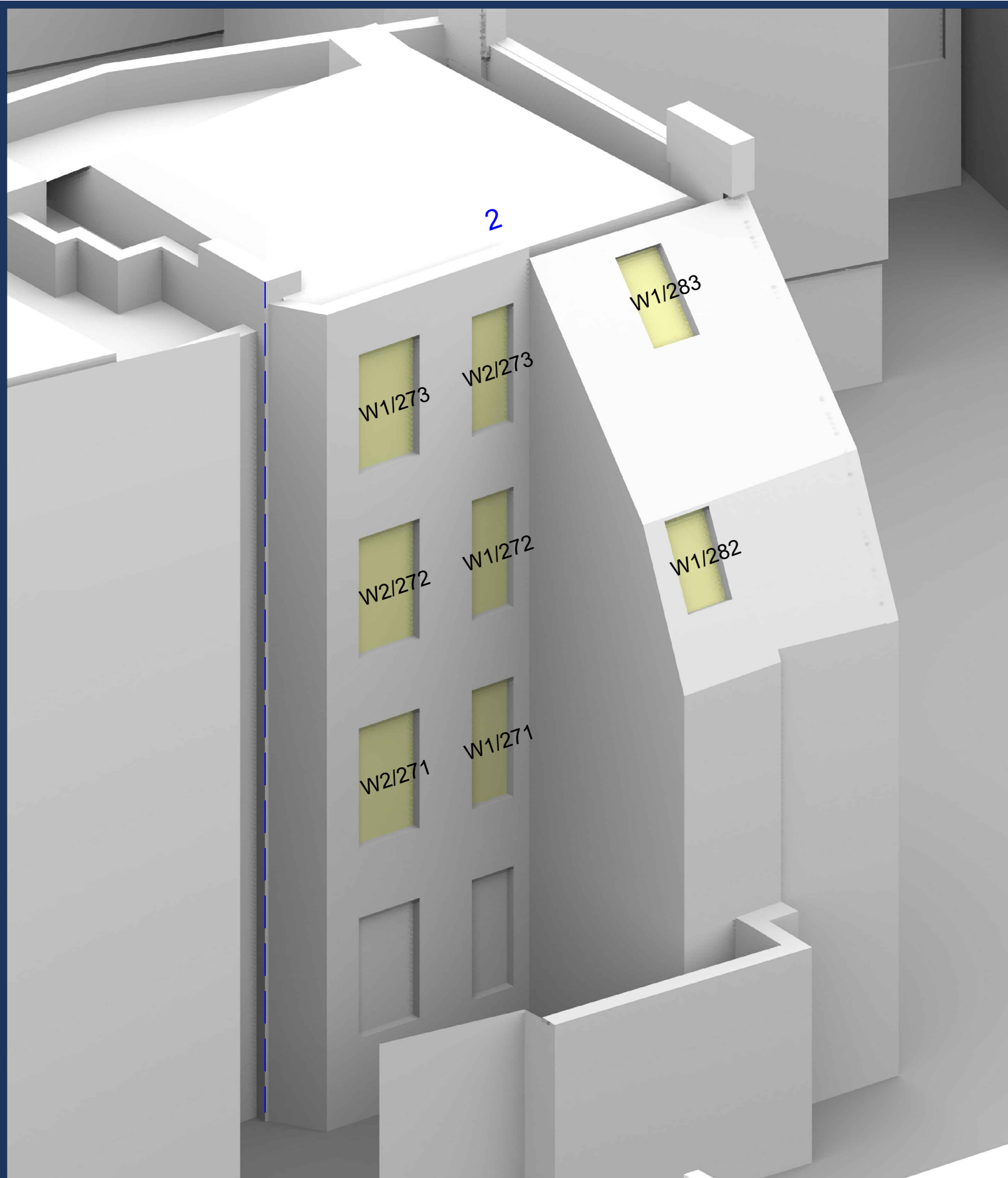


Appendix 2:

Window Locations



Sources: LRM Survey Services
2D Survey (received 07/06/21)
Avonmouth House, 6 Avonmouth Street, SE1 6NX - Topographical Survey.dwg

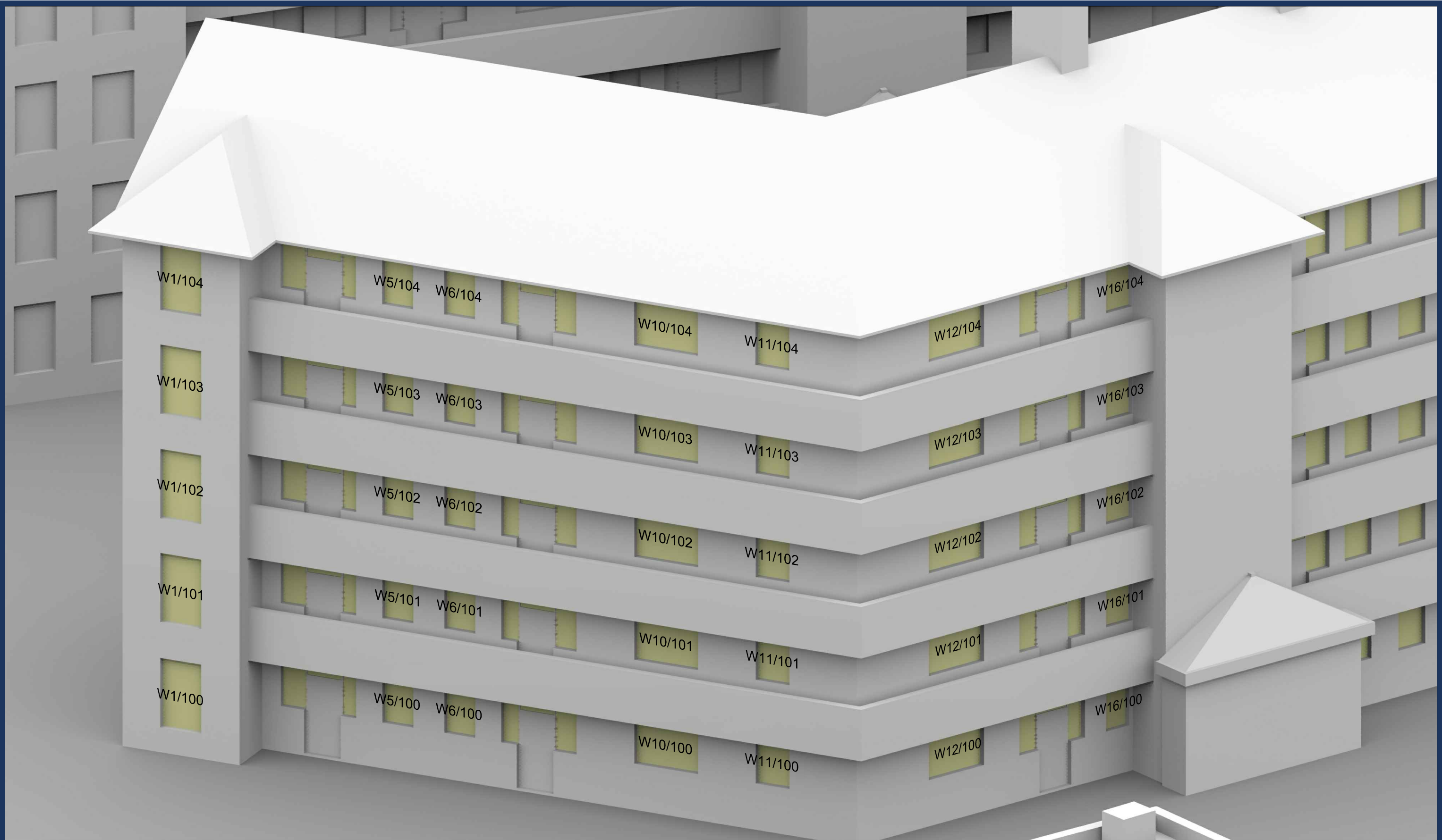
Stitch Architects
Proposed Scheme 3D Model (received 13/07/21)
210712-Massing.skp
Proposed Scheme 3D Model (received 07/09/21)
210907-AvonmouthModel.skp
21235-STCH-XX-ZZ-DR-A-0200-0203.pdf
21235-STCH-SK-50-Geolocation.pdf
Proposed Scheme 2D Data (received 09/09/21)
21235-STCH-XX-ZZ-DR-A-0103-Level 02.dwg
21235-STCH-XX-ZZ-DR-A-0300-Proposed building - Section AA.dwg
21235-STCH-XX-ZZ-DR-A-0201-Proposed building - East elevation.dwg

Key:	
Scheme Confirmed:	-
Date:	-

Project: Avonmouth House			
Drawn By:	MC	Scale:	NTS@A3
Date:	Sep 21	Dwg No:	P2747/WM/01

Title: Window Locations 57-61 Newington Causeway & 2 Avonmouth Street	
Rel:	04





Sources: LRM Survey Services
2D Survey (received 07/06/21)
Avonmouth House, 6 Avonmouth Street, SE1 6NX - Topographical Survey.dwg

Stitch Architects
Proposed Scheme 3D Model (received 13/07/21)
210712-Massing.skp
Proposed Scheme 3D Model (received 07/09/21)
210907-AvonmouthModel.skp
21235-STCH-XX-ZZ-DR-A-0200-0203.pdf
21235-STCH-SK-50-Geolocation.pdf
Proposed Scheme 2D Data (received 09/09/21)
21235-STCH-XX-02-DR-A-0103-Level 02.dwg
21235-STCH-XX-ZZ-DR-A-0300-Proposed building - Section AA.dwg
21235-STCH-XX-ZZ-DR-A-0201-Proposed building - East elevation.dwg

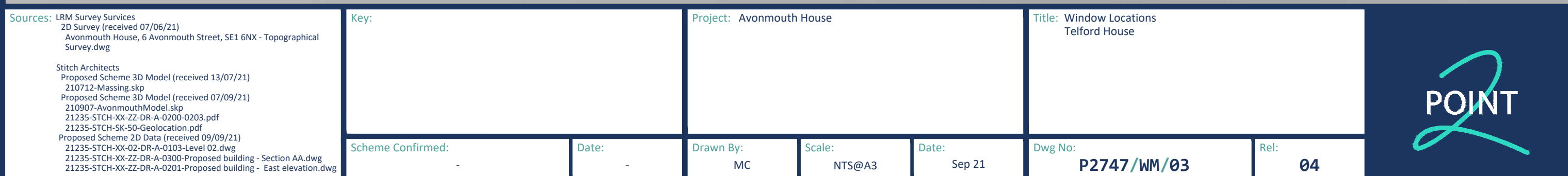
Key:	
Scheme Confirmed:	-

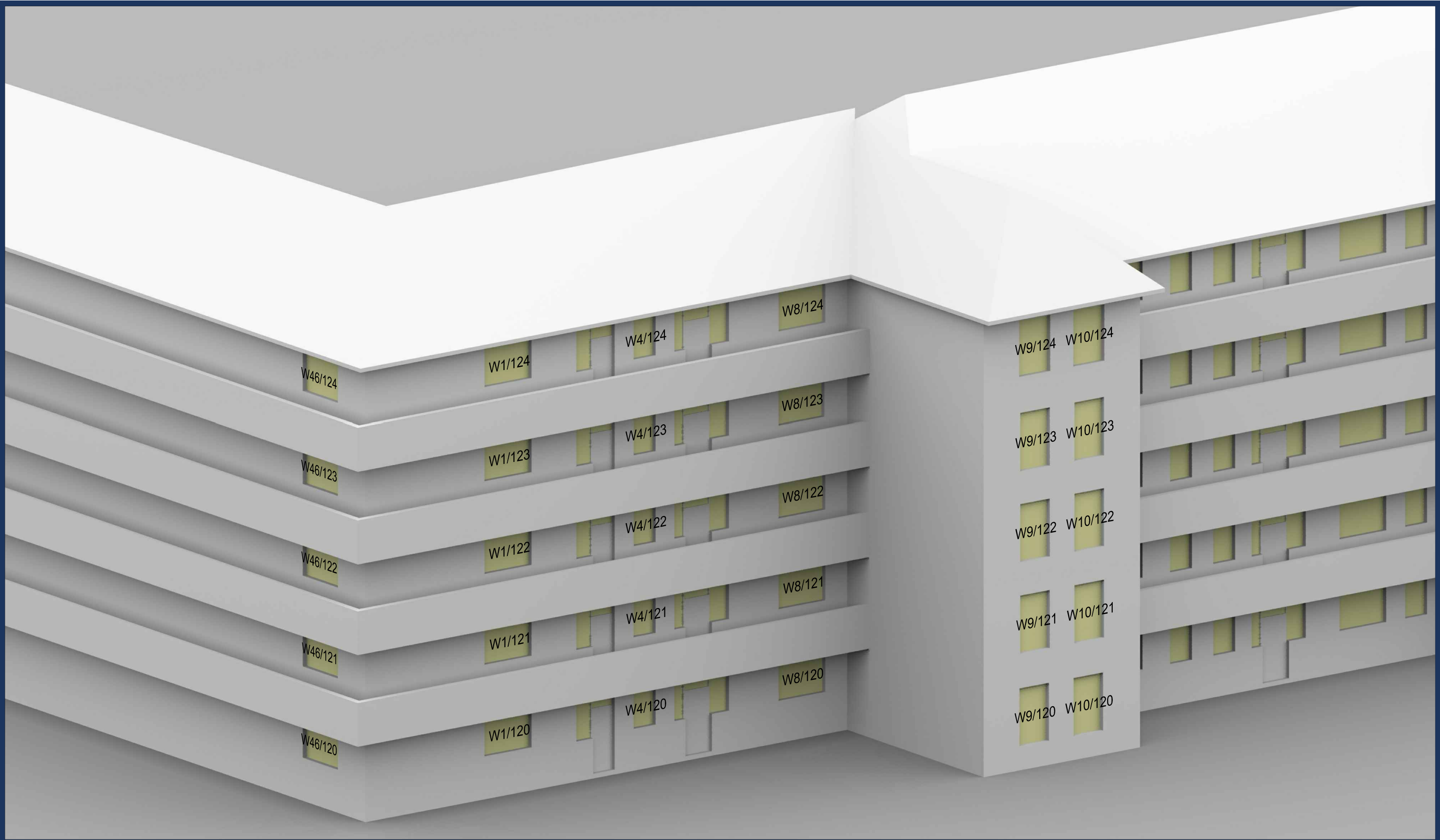
Project: Avonmouth House			
Drawn By:	MC	Scale:	NTS@A3

Title: Window Locations Telford House	
Dwg No:	P2747/WM/02

Rel:	04
------	----







Sources: LRM Survey Survices
2D Survey (received 07/06/21)
Avonmouth House, 6 Avonmouth Street, SE1 6NX - Topographical Survey.dwg

Stitch Architects
Proposed Scheme 3D Model (received 13/07/21)
210712-Massing.skp
Proposed Scheme 3D Model (received 07/09/21)
210907-AvonmouthModel.skp
21235-STCH-XX-ZZ-DR-A-0200-0203.pdf
21235-STCH-SK-50-Geolocation.pdf
Proposed Scheme 2D Data (received 09/09/21)
21235-STCH-XX-ZZ-DR-A-0103-Level 02.dwg
21235-STCH-XX-ZZ-DR-A-0300-Proposed building - Section AA.dwg
21235-STCH-XX-ZZ-DR-A-0201-Proposed building - East elevation.dwg

Key:	
Scheme Confirmed:	-

Project: Avonmouth House				
Drawn By:	MC	Scale:	NTS@A3	Date: Sep 21

Title: Window Locations Stephenson House	
Dwg No:	P2747 /WM /04
Rel:	04





Sources: LRM Survey Services
2D Survey (received 07/06/21)
Avonmouth House, 6 Avonmouth Street, SE1 6NX - Topographical Survey.dwg

Stitch Architects
Proposed Scheme 3D Model (received 13/07/21)
210712-Massing.skp
Proposed Scheme 3D Model (received 07/09/21)
210907-AvonmouthModel.skp
21235-STCH-XX-ZZ-DR-A-0200-0203.pdf
21235-STCH-SK-50-Geolocation.pdf
Proposed Scheme 2D Data (received 09/09/21)
21235-STCH-XX-02-DR-A-0103-Level 02.dwg
21235-STCH-XX-ZZ-DR-A-0300-Proposed building - Section AA.dwg
21235-STCH-XX-ZZ-DR-A-0201-Proposed building - East elevation.dwg

Key:	
Scheme Confirmed:	-

Project: Avonmouth House			
Drawn By:	MC	Scale:	NTS@A3
Date:	-	Date:	Sep 21

Title: Window Locations Stephenson House	
Dwg No:	P2747/WM/05
Rel:	04



Appendix 3:

Daylight and Sunlight Technical Analysis



DAYLIGHT & SUNLIGHT ANALYSIS

AVONMOUTH HOUSE, LONDON
EXISTING VS PROPOSED SCHEME DATED 07-09-21
P2247 - rel5

Location			Vertical Sky Component (VSC)			Vertical Sky Component (VSC) (Balcony and walkway effects removed)			Average Daylight Factor (ADF)					No-Sky Line (NSL)				Annual Probable Sunlight Hours (APSH) (window)						Annual Probable Sunlight Hours (APSH) (room)					
Room	Room Use	Window	Existing VSC	Proposed VSC	%Loss	Existing VSC	Proposed VSC	%Loss	Existing ADF	Total ADF	Proposed ADF	Total ADF	%Loss	Whole Room sq ft	EXISTING sq ft	PROPOSED sq ft	%Loss	EXISTING		PROPOSED		%LOSS		EXISTING		PROPOSED		%LOSS	
																		Winter %	Annual %	Winter %	Annual %	Winter	Annual	Winter %	Annual %	Winter %	Annual %	Winter	Annual
TELFORD HOUSE																													
R1/100	BEDROOM	W1/100	33.8	23.9	29.37	33.8	23.9	9.92	1.11	1.11	0.83	0.83	25.11	175.6	171.9	114.1	33.6												
R4/100	KITCHEN	W5/100	16.8	9.6	42.98	16.8	9.6	7.23	0.56	0.56	0.40	0.40	29.43	79.1	63.6	22.6	64.6												
R5/100	KITCHEN	W6/100	16.8	9.6	42.99	16.8	9.6	7.21	0.56	0.56	0.39	0.39	29.64	79.1	63.7	21.2	66.7												
R8/100	BEDROOM	W10/100	16.1	9.8	39.15	16.1	9.8	6.30	0.86	0.86	0.65	0.65	24.62	143.2	133.6	116.4	12.9												
R9/100	KITCHEN	W11/100	15.7	9.7	38.50	15.7	9.7	6.06	0.58	0.58	0.43	0.43	26.22	90.2	78.5	70.9	9.7												
R10/100	BEDROOM	W12/100	7.9	7.7	3.03	20.5	19.2	1.36	0.63	0.63	0.63	0.63	0.63	123.5	96.6	95.8	0.8												
R13/100	KITCHEN	W16/100	7.3	7.1	2.47	15.8	14.9	0.99	0.32	0.32	0.32	0.32	0.00	72.8	35.7	35.7	0.0												
R14/100	BEDROOM	W17/100	3.0	3.0	0.00	15.0	15.0	0.02	0.16	0.16	0.16	0.16	0.00	110.2	32.0	32.0	0.0												
R15/100	KITCHEN	W18/100	4.5	4.5	0.00	16.8	16.6	0.26	0.26	0.26	0.26	0.26	0.00	72.8	14.9	14.9	0.0												
R18/100	BEDROOM	W22/100	15.9	15.5	2.89	15.9	15.5	0.46	0.64	0.64	0.64	0.64	0.00	172.0	54.1	54.1	0.0												
R19/100	BEDROOM	W23/100	15.6	15.1	2.70	15.6	15.1	0.42	0.63	0.63	0.63	0.63	0.00	172.0	89.1	89.1	0.0												
R22/100	KITCHEN	W27/100	4.0	4.0	0.00	16.3	16.0	0.33	0.23	0.23	0.23	0.23	0.00	79.1	54.5	54.5	0.0												
R23/100	KITCHEN	W28/100	4.1	4.1	0.97	16.2	15.9	0.30	0.23	0.23	0.23	0.23	0.00	79.1	55.2	55.2	0.0												
R26/100	BEDROOM	W32/100	3.8	3.8	1.05	14.0	13.7	0.25	0.38	0.38	0.38	0.38	0.00	145.5	90.8	90.8	0.0												
R27/100	BEDROOM	W33/100	2.5	2.5	0.00	12.4	12.4	0.00	0.29	0.29	0.29	0.29	0.00	145.5	84.2	84.2	0.0												
R30/100	KITCHEN	W37/100	3.8	3.8	0.00	15.3	15.2	0.08	0.26	0.26	0.26	0.26	0.00	79.1	35.5	35.5	0.0												
R31/100	KITCHEN	W38/100	3.7	3.7	0.00	15.3	15.2	0.10	0.26	0.26	0.26	0.26	0.00	79.1	38.2	38.2	0.0												
R34/100	BEDROOM	W42/100	13.8	13.7	1.09	13.8	13.7	0.15	0.51	0.51	0.51	0.51	0.00	210.4	103.2	103.2	0.0												
R1/101	BEDROOM	W1/101	35.2	24.8	29.63	35.2	24.8	10.44	1.16	1.16	0.86	0.86	25.65	175.6	171.9	114.7	33.3												
R4/101	KITCHEN	W5/101	18.0	10.0	44.42	18.0	10.0	8.00	0.59	0.59	0.41	0.41	31.42	79.1	63.6	22.6	64.6												
R5/101	KITCHEN	W6/101	18.0	10.0	44.34	18.0	10.0	7.99	0.59	0.59	0.40	0.40	31.69	79.1	63.7	21.2	66.7												
R8/101	BEDROOM	W10/101	17.7	10.6	40.17	17.7	10.6	7.09	0.93	0.93	0.68	0.68	26.05	143.2	133.6	116.6	12.7												
R9/101	KITCHEN	W11/101	17.5	10.7	39.16	17.5	10.7	6.86	0.63	0.63	0.46	0.46	27.26	90.2	79.7	72.1	9.5												
R10/101	BEDROOM	W12/101	9.1	8.7	4.29	22.1	20.6	1.45	0.69	0.69	0.69	0.69	1.15	123.5	101.3	100.2	1.1												
R13/101	KITCHEN	W16/101	8.0	7.8	3.25	17.7	16.6	1.04	0.39	0.39	0.39	0.39	0.00	72.8	36.7	36.7	0.0												
R16/101	KITCHEN	W20/101	6.1	6.1	0.00	18.9	18.3	0.56	0.32	0.32	0.32	0.32	0.00	72.8	21.4	21.4	0.0												
R17/101	KITCHEN	W21/101	5.9	5.8	1.53	18.6	18.0	0.57	0.30	0.30	0.30	0.30	0.00	72.8	21.6	21.6	0.0												
R20/101	BEDROOM	W25/101	17.5	17.0	2.69	17.5	17.0	0.47	0.68	0.68	0.68	0.68	0.00	172.0	68.4	68.4	0.0												
R21/101	BEDROOM	W26/101	16.9	16.5	2.48	16.9	16.5	0.42	0.67	0.67	0.67	0.67	0.00	172.0	101.0	101.0	0.0												
R24/101	KITCHEN	W30/101	4.6	4.6	0.00	17.3	17.0	0.33	0.25	0.25	0.25	0.25	0.00	79.1	54.5	54.5	0.0												
R25/101	KITCHEN	W31/101	4.7	4.6	0.86	17.1	16.8	0.30	0.25	0.25	0.25	0.25	0.00	79.1	55.2	55.2	0.0												
R28/101	BEDROOM	W35/101	4.4	4.3	1.14	16.3	16.1	0.24	0.41	0.41	0.41	0.41	0.00	145.5	95.0	95.0	0.0												
R29/101	BEDROOM	W36/101	3.7	3.7	0.00	15.7	15.7	0.00	0.39	0.39	0.39	0.39	0.00	145.5	96.8	96.8	0.0												



DAYLIGHT & SUNLIGHT ANALYSIS

AVONMOUTH HOUSE, LONDON
EXISTING VS PROPOSED SCHEME DATED 07-09-21
P2247 - rel5

Location			Vertical Sky Component (VSC)			Vertical Sky Component (VSC) (Balcony and walkway effects removed)			Average Daylight Factor (ADF)					No-Sky Line (NSL)				Annual Probable Sunlight Hours (APSH) (window)						Annual Probable Sunlight Hours (APSH) (room)					
Room	Room Use	Window	Existing VSC	Proposed VSC	%Loss	Existing VSC	Proposed VSC	%Loss	Existing ADF	Total ADF	Proposed ADF	Total ADF	%Loss	Whole Room sq ft	EXISTING sq ft	PROPOSED sq ft	%Loss	EXISTING		PROPOSED		%LOSS		EXISTING		PROPOSED		%LOSS	
																		Winter %	Annual %	Winter %	Annual %	Winter	Annual	Winter %	Annual %	Winter %	Annual %	Winter	Annual
R32/101	KITCHEN	W40/101	4.2	4.1	0.48	16.2	16.0	0.16	0.26	0.26	0.26	0.26	0.00	79.1	35.5	35.5	0.0												
R33/101	KITCHEN	W41/101	4.1	4.0	0.74	16.2	16.1	0.14	0.26	0.26	0.26	0.26	0.00	79.1	38.3	38.3	0.0												
R36/101	BEDROOM	W45/101	15.2	15.0	0.99	15.2	15.0	0.15	0.54	0.54	0.54	0.54	0.00	210.4	103.7	103.7	0.0												
R1/102	BEDROOM	W1/102	36.1	25.6	29.12	36.1	25.6	10.52	1.19	1.19	0.89	0.89	25.31	175.6	171.9	116.2	32.4												
R4/102	KITCHEN	W5/102	19.2	10.8	43.56	19.2	10.8	8.36	0.63	0.63	0.43	0.43	32.01	79.1	63.6	22.9	64.2												
R5/102	KITCHEN	W6/102	19.2	10.9	43.32	19.2	10.9	8.33	0.63	0.63	0.43	0.43	32.11	79.1	63.7	21.5	66.2												
R8/102	BEDROOM	W10/102	19.0	11.6	38.93	19.0	11.6	7.40	0.99	0.99	0.73	0.73	26.36	143.2	133.6	116.6	12.7												
R9/102	KITCHEN	W11/102	19.0	11.8	37.76	19.0	11.8	7.17	0.68	0.68	0.49	0.49	27.35	90.2	79.9	72.3	9.5												
R10/102	BEDROOM	W12/102	10.1	9.6	4.94	23.0	21.6	1.44	0.74	0.74	0.73	0.73	1.62	123.5	102.0	100.9	1.1												
R13/102	KITCHEN	W16/102	8.9	8.5	3.72	18.4	17.3	1.02	0.41	0.41	0.41	0.41	0.00	72.8	36.7	36.7	0.0												
R16/102	KITCHEN	W20/102	7.4	7.4	0.00	20.1	19.6	0.54	0.37	0.37	0.37	0.37	0.00	72.8	32.4	32.4	0.0												
R17/102	KITCHEN	W21/102	7.4	7.3	1.36	20.0	19.4	0.55	0.36	0.36	0.36	0.36	0.00	72.8	33.4	33.4	0.0												
R20/102	BEDROOM	W25/102	19.0	18.5	2.42	19.0	18.5	0.46	0.72	0.72	0.72	0.72	0.00	172.0	98.2	98.2	0.0												
R21/102	BEDROOM	W26/102	18.3	17.9	2.24	18.3	17.9	0.41	0.71	0.71	0.71	0.71	0.00	172.0	122.8	122.8	0.0												
R24/102	KITCHEN	W30/102	5.6	5.6	0.00	18.3	18.0	0.33	0.28	0.28	0.28	0.28	0.00	79.1	54.5	54.5	0.0												
R25/102	KITCHEN	W31/102	5.6	5.6	0.89	18.1	17.8	0.28	0.28	0.28	0.28	0.28	0.00	79.1	55.2	55.2	0.0												
R28/102	BEDROOM	W35/102	5.1	5.0	0.98	17.1	16.8	0.24	0.45	0.45	0.45	0.45	0.00	145.5	98.2	98.2	0.0												
R29/102	BEDROOM	W36/102	4.2	4.2	0.00	16.4	16.4	0.00	0.40	0.40	0.40	0.40	0.00	145.5	99.5	99.5	0.0												
R32/102	KITCHEN	W40/102	4.8	4.8	0.42	16.9	16.7	0.16	0.27	0.27	0.27	0.27	0.00	79.1	35.6	35.6	0.0												
R33/102	KITCHEN	W41/102	4.7	4.7	0.64	16.9	16.8	0.13	0.27	0.27	0.27	0.27	0.00	79.1	38.3	38.3	0.0												
R36/102	BEDROOM	W45/102	16.4	16.3	0.85	16.4	16.3	0.14	0.56	0.56	0.56	0.56	0.00	210.4	106.7	106.7	0.0												
R1/103	BEDROOM	W1/103	36.6	26.1	28.58	36.6	26.1	10.45	1.20	1.20	0.90	0.90	24.77	175.6	171.9	118.2	31.2												
R4/103	KITCHEN	W5/103	19.9	11.4	42.63	19.9	11.4	8.48	0.63	0.63	0.43	0.43	32.11	79.1	63.6	23.7	62.7												
R5/103	KITCHEN	W6/103	20.0	11.5	42.31	20.0	11.5	8.44	0.63	0.63	0.42	0.42	32.32	79.1	63.7	22.5	64.7												
R8/103	BEDROOM	W10/103	19.8	12.3	37.82	19.8	12.3	7.48	0.99	0.99	0.73	0.73	26.16	143.2	133.6	116.6	12.7												
R9/103	KITCHEN	W11/103	19.7	12.5	36.63	19.7	12.5	7.23	0.68	0.68	0.50	0.50	26.84	90.2	79.8	73.1	8.4												
R10/103	BEDROOM	W12/103	10.7	10.1	5.33	23.8	22.4	1.40	0.75	0.75	0.74	0.74	1.86	123.5	102.4	101.3	1.1												
R13/103	KITCHEN	W16/103	9.4	9.0	3.85	18.8	17.8	1.00	0.41	0.41	0.41	0.41	0.00	72.8	36.7	36.7	0.0												
R16/103	KITCHEN	W20/103	8.3	8.3	0.00	21.3	20.8	0.50	0.39	0.39	0.39	0.39	0.00	72.8	35.4	35.4	0.0												
R17/103	KITCHEN	W21/103	8.5	8.4	1.18	21.3	20.8	0.49	0.38	0.38	0.38	0.38	0.00	72.8	36.8	36.8	0.0												
R20/103	BEDROOM	W25/103	20.2	19.7	2.18	20.2	19.7	0.44	0.76	0.76	0.76	0.76	0.00	172.0	119.4	119.4	0.0												
R21/103	BEDROOM	W26/103	19.4	19.0	2.12	19.4	19.0	0.41	0.74	0.74	0.74	0.74	0.00	172.0	134.1	134.1	0.0												
R24/103	KITCHEN	W30/103	6.3	6.3	0.00	19.3	19.0	0.29	0.30	0.30	0.30	0.30	0.00	79.1	54.5	54.5	0.0												
R25/103	KITCHEN	W31/103	6.3	6.2	0.80	19.1	18.8	0.25	0.29	0.29	0.29	0.29	0.00	79.1	55.3	55.3	0.0												
R28/103	BEDROOM	W35/103	5.6	5.5	0.90	17.7	17.4	0.23	0.46	0.46	0.46	0.46	0.00	145.5	100.3	100.3	0.0												



AVONMOUTH HOUSE, LONDON
EXISTING VS PROPOSED SCHEME DATED 07-09-21
P2747 - rel5

Location			Vertical Sky Component (VSC)			Vertical Sky Component (VSC) (Balcony and walkway effects removed)			Average Daylight Factor (ADF)					No-Sky Line (NSL)				Annual Probable Sunlight Hours (APSH) (window)						Annual Probable Sunlight Hours (APSH) (room)					
Room	Room Use	Window				Existing VSC	Proposed VSC	%Loss	Existing VSC	Proposed VSC	%Loss	Existing ADF	Total ADF	Proposed ADF	Total ADF	%Loss	Whole Room sq ft	EXISTING sq ft	PROPOSED sq ft	%Loss	Winter %	Annual %	Winter %	Annual %	Winter	Annual	Winter %	Annual %	Winter %
R29/103	BEDROOM	W36/103	4.5	4.5	0.00	16.9	16.9	0.00	0.41	0.41	0.41	0.41	0.00	145.5	101.2	101.2	0.0												
R32/103	KITCHEN	W40/103	5.2	5.1	0.39	17.6	17.5	0.14	0.27	0.27	0.27	0.27	0.00	79.1	35.7	35.7	0.0												
R33/103	KITCHEN	W41/103	5.1	5.1	0.59	17.6	17.5	0.11	0.26	0.26	0.26	0.26	0.00	79.1	38.3	38.3	0.0												
R36/103	BEDROOM	W45/103	16.9	16.7	0.83	16.9	16.7	0.14	0.57	0.57	0.57	0.57	0.00	210.4	109.1	109.1	0.0												
R1/104	BEDROOM	W1/104	30.2	20.0	33.98	30.2	20.0	10.27	0.88	0.88	0.62	0.62	29.41	175.6	171.9	117.4	31.7												
R4/104	KITCHEN	W5/104	26.6	17.2	35.23	26.6	17.2	9.36	0.74	0.74	0.52	0.52	29.72	79.1	64.7	27.9	56.7												
R5/104	KITCHEN	W6/104	26.8	17.5	34.74	26.8	17.5	9.32	0.74	0.74	0.52	0.52	29.44	79.1	64.7	28.3	56.3												
R8/104	BEDROOM	W10/104	26.7	18.4	31.04	26.7	18.4	8.29	1.18	1.18	0.90	0.90	24.09	143.2	135.5	118.7	12.4												
R9/104	KITCHEN	W11/104	26.6	18.6	29.94	26.6	18.6	7.96	0.79	0.79	0.60	0.60	24.59	90.2	80.6	77.1	4.3												
R10/104	BEDROOM	W12/104	14.9	14.1	5.64	24.6	23.3	1.36	0.90	0.90	0.87	0.87	2.35	123.5	103.0	102.2	0.7												
R13/104	KITCHEN	W16/104	11.7	11.2	4.70	16.1	15.2	0.96	0.47	0.47	0.47	0.47	0.00	72.8	37.4	37.4	0.0												
R16/104	KITCHEN	W20/104	13.4	13.4	0.00	22.5	22.1	0.41	0.51	0.51	0.51	0.51	0.00	72.8	37.3	37.3	0.0												
R17/104	KITCHEN	W21/104	14.1	14.0	0.99	22.8	22.3	0.52	0.51	0.51	0.51	0.51	0.00	72.8	38.7	38.7	0.0												
R20/104	BEDROOM	W25/104	14.8	14.5	1.96	14.8	14.5	0.29	0.54	0.54	0.54	0.54	0.00	172.0	117.0	117.0	0.0												
R21/104	BEDROOM	W26/104	13.8	13.6	1.45	13.8	13.6	0.20	0.52	0.52	0.52	0.52	0.00	172.0	133.9	133.9	0.0												
R24/104	KITCHEN	W30/104	11.3	11.3	0.00	20.3	20.1	0.21	0.42	0.42	0.42	0.42	0.00	79.1	56.6	56.6	0.0												
R25/104	KITCHEN	W31/104	11.4	11.3	0.44	20.1	19.8	0.25	0.41	0.41	0.41	0.41	0.00	79.1	57.7	57.7	0.0												
R28/104	BEDROOM	W35/104	9.2	9.1	0.98	18.2	18.0	0.22	0.58	0.58	0.58	0.58	0.00	145.5	107.6	107.6	0.0												
R29/104	BEDROOM	W36/104	8.1	8.1	0.00	17.6	17.6	0.00	0.53	0.53	0.53	0.53	0.00	145.5	111.3	111.3	0.0												
R32/104	KITCHEN	W40/104	9.7	9.7	0.21	18.5	18.4	0.15	0.37	0.37	0.37	0.37	0.00	79.1	38.7	38.7	0.0												
R33/104	KITCHEN	W41/104	9.5	9.5	0.42	18.6	18.4	0.12	0.37	0.37	0.37	0.37	0.00	79.1	41.0	41.0	0.0												
R36/104	BEDROOM	W45/104	10.9	10.7	1.20	10.9	10.7	0.13	0.36	0.36	0.36	0.36	0.00	210.4	103.9	103.9	0.0												

STEPHENSON HOUSE

R1/120	BEDROOM	W1/120	10.8	6.3	41.54	28.6	23.2	5.45	0.63	0.63	0.45	0.45	28.32	159.9	149.5	139.6	6.6
R3/120	KITCHEN	W4/120	9.6	5.3	44.92	25.9	20.9	5.00	0.40	0.40	0.26	0.26	34.59	79.1	64.2	53.1	17.3
R6/120	BEDROOM	W8/120	7.6	3.7	51.25	20.1	15.5	4.53	0.52	0.52	0.32	0.32	38.85	159.9	78.4	70.2	10.5
R7/120	BEDROOM	W9/120	23.2	19.1	17.74	23.2	19.1	4.11	1.33	1.33	1.13	1.13	14.89	85.0	64.4	60.0	6.8
R8/120	BEDROOM	W10/120	22.6	18.9	16.45	22.6	18.9	3.71	1.31	1.31	1.13	1.13	13.50	85.0	71.6	61.6	14.1
R11/120	KITCHEN	W14/120	4.8	2.8	41.68	21.0	18.5	2.52	0.25	0.25	0.16	0.16	35.63	79.1	29.3	29.3	0.0
R12/120	KITCHEN	W15/120	5.0	3.3	33.80	21.6	19.4	2.20	0.25	0.25	0.17	0.17	29.55	79.1	29.6	29.6	0.0
R15/120	BEDROOM	W19/120	4.6	3.6	23.11	21.4	19.9	1.47	0.38	0.38	0.32	0.32	15.30	137.7	60.6	60.6	0.0
R16/120	KITCHEN	W20/120	4.5	3.7	18.89	20.3	19.0	1.28	0.21	0.21	0.17	0.17	15.94	79.1	25.8	25.8	0.0
R19/120	KITCHEN	W24/120	1.9	1.9	0.00	14.1	14.1	0.00	0.12	0.12	0.12	0.12	0.00	79.1	23.3	23.3	0.0
R22/120	BEDROOM	W28/120	3.0	2.5	14.77	19.6	18.9	0.71	0.24	0.24	0.23	0.23	6.22	137.7	41.1	41.1	0.0

orgP2-2700/Awsmouth.House.2747.pdfS1AP8070921.xls
 car.1/off/awsmouth.house.2747.pdfS1AP8070921_combined.xls



org/P2-2700/Avonmouth_House.2747/yelS/yAP870621.xls
 cer./yellserver/proj/poin2/P2-2700/Avonmouth_House.2747/yelS/yAP870621 - combined.xls



DAYLIGHT & SUNLIGHT ANALYSIS

AVONMOUTH HOUSE, LONDON
EXISTING VS PROPOSED SCHEME DATED 07-09-21
P2247 - rel5

Location			Vertical Sky Component (VSC)			Vertical Sky Component (VSC) (Balcony and walkway effects removed)			Average Daylight Factor (ADF)					No-Sky Line (NSL)				Annual Probable Sunlight Hours (APSH) (window)						Annual Probable Sunlight Hours (APSH) (room)					
Room	Room Use	Window	Existing VSC	Proposed VSC	%Loss	Existing VSC	Proposed VSC	%Loss	Existing ADF	Total ADF	Proposed ADF	Total ADF	%Loss	Whole Room sq ft	EXISTING sq ft	PROPOSED sq ft	%Loss	EXISTING		PROPOSED		%LOSS		EXISTING		PROPOSED		%LOSS	
																		Winter %	Annual %	Winter %	Annual %	Winter	Annual	Winter %	Annual %	Winter %	Annual %	Winter	Annual
R1/124	BEDROOM	W1/124	20.1	15.5	22.82	33.3	28.4	4.83	0.89	0.89	0.72	0.72	18.90	159.9	149.9	148.5	0.9												
R3/124	KITCHEN	W4/124	19.7	15.3	22.17	32.5	28.1	4.43	0.60	0.60	0.48	0.48	19.30	79.1	64.4	59.4	7.9												
R6/124	BEDROOM	W8/124	17.8	13.9	21.97	30.3	26.3	3.98	0.85	0.85	0.70	0.70	17.92	159.9	129.5	129.5	0.0												
R7/124	BEDROOM	W9/124	22.5	18.4	18.03	22.5	18.4	4.05	1.29	1.29	1.09	1.09	16.09	85.0	81.3	81.3	0.0												
R8/124	BEDROOM	W10/124	22.0	18.2	17.42	22.0	18.2	3.83	1.28	1.28	1.10	1.10	14.72	85.0	83.1	82.4	0.8												
R11/124	KITCHEN	W14/124	16.4	13.6	17.40	29.8	26.8	3.00	0.54	0.54	0.46	0.46	14.55	79.1	59.0	59.0	0.0												
R12/124	KITCHEN	W15/124	16.8	14.1	16.21	29.9	27.1	2.84	0.54	0.54	0.46	0.46	14.10	79.1	63.4	63.4	0.0												
R15/124	BEDROOM	W19/124	16.4	14.1	14.06	29.5	27.3	2.29	0.89	0.89	0.79	0.79	11.14	137.7	128.9	128.9	0.0												
R16/124	KITCHEN	W20/124	16.0	13.9	13.23	28.8	26.6	2.16	0.52	0.52	0.46	0.46	11.15	79.1	62.2	62.2	0.0												
R19/124	KITCHEN	W24/124	10.1	10.1	0.00	20.8	20.7	0.10	0.38	0.38	0.38	0.38	0.00	79.1	60.4	60.4	0.0												
R22/124	BEDROOM	W28/124	15.7	14.3	8.89	27.6	26.2	1.34	0.85	0.85	0.79	0.79	7.40	137.7	123.2	123.2	0.0												
R23/124	KITCHEN	W29/124	15.5	14.2	8.32	27.1	25.8	1.27	0.48	0.48	0.46	0.46	5.99	79.1	58.6	58.6	0.0												
R26/124	KITCHEN	W33/124	14.6	13.5	7.59	26.4	25.3	1.17	0.47	0.47	0.44	0.44	4.94	79.1	59.0	59.0	0.0												
R29/124	BEDROOM	W37/124	16.3	15.4	5.88	16.3	15.4	0.96	1.03	1.03	0.97	0.97	5.44	84.3	73.7	73.7	0.0												
R30/124	BEDROOM	W38/124	15.9	14.9	5.86	15.9	14.9	0.93	1.01	1.01	0.95	0.95	5.37	85.0	83.1	83.1	0.0												
R31/124	BEDROOM	W39/124	10.1	10.1	0.00	21.6	21.6	0.00	0.60	0.60	0.60	0.60	0.00	137.7	129.4	129.4	0.0												
R34/124	KITCHEN	W43/124	12.7	12.2	4.56	24.1	23.4	0.71	0.41	0.41	0.40	0.40	1.70	79.1	54.7	54.7	0.0												
R35/124	KITCHEN	W44/124	12.9	12.2	5.05	24.2	23.5	0.66	0.41	0.41	0.40	0.40	1.96	79.1	55.5	55.5	0.0												
R36/124	BEDROOM	W45/124	13.1	12.5	4.79	24.5	23.9	0.62	0.74	0.74	0.71	0.71	3.93	137.7	131.6	131.6	0.0												
R37/124	BEDROOM	W46/124	26.4	25.8	2.27	38.5	37.5	0.97	1.29	1.29	1.28	1.28	0.70	125.2	117.7	117.1	0.5												
57-61 NEWINGTON CAUSEWAY																													
R1/261	BEDROOM	W1/261	5.8	4.6	20.48	5.8	4.6	1.19	0.38	0.38	0.33	0.33	11.94	111.4	41.7	38.4	7.9	4	13	3	9	25.0	30.8	4	13	3	9	25.0	30.8
R2/261	LKD	W2/261	8.6	4.4	48.96	8.6	4.4	4.23	0.20		0.12							2	13	0	3	100.0	76.9						
R2/261		W3/261	30.8	30.8	0.00	33.5	33.5	0.00	1.02	1.22	1.02	1.14	6.80	365.9	336.4	321.5	4.4	2	25	2	25	0.0	0.0	4	38	2	28	50.0	26.3
R1/262	BEDROOM	W1/262	8.5	6.6	22.14	8.5	6.6	1.88	0.46	0.46	0.40	0.40	13.10	111.4	44.4	40.0	9.9	6	18	4	13	33.3	27.8	6	18	4	13	33.3	27.8
R2/262	LKD	W2/262	13.9	8.1	41.70	13.9	8.1	5.78	0.29		0.20							4	18	0	6	100.0	66.7						
R2/262		W3/262	30.8	30.8	0.00	35.2	35.2	0.00	1.06	1.35	1.06	1.25	6.84	367.4	345.5	339.6	1.7	3	26	3	26	0.0	0.0	7	44	3	32	57.1	27.3
R1/263	BEDROOM	W1/263	13.3	10.7	19.87	13.3	10.7	2.65	0.66	0.66	0.59	0.59	9.86	111.4	52.4	47.2	9.9	10	30	4	18	60.0	40.0	10	30	4	18	60.0	40.0
R2/263	LKD	W2/263	23.9	17.4	27.07	23.9	17.4	6.46	0.42		0.34							6	31	1	19	83.3	38.7						
R2/263		W3/263	36.5	36.5	0.00	36.5	36.5	0.00	1.33	1.75	1.33	1.66	4.92	367.4	351.1	345.1	1.7	3	27	3	27	0.0	0.0	9	58	4	46	55.6	20.7
R2/264		W1/264	50.0	42.0	15.96	50.0	42.0	7.97	1.18	1.18	1.03	1.03	12.88	135.7	105.7	96.4	8.9	9	44	3	32	66.7	27.3	9	44	3	32	66.7	27.3
2 AVONMOUTH STREET																													
R1/271		W1/271	3.9	3.9	0.00	3.9	3.9	0.00	0.27		0.27							0	5	0	5	-	0.0						
R1/271		W2/271	6.9	6.9	0.00	6.9	6.9	0.00	0.55	0.81	0.55	0.81	0.00	132.8	56.0	56.0	0.0	1	10	1	10	0.0	0.0	1	13	1	13	0.0	0.0
R1/272		W1/272	6.3	6.3	0.00	6.3	6.3	0.00	0.35		0.35							0	7	0	7	-	0.0						
R1/272		W2/272	11.3	10.6	5.94	11.3	10.6	0.67	0.73	1.08	0.71	1.06	1.39	132.8	94.7	94.6	0.1	4	19	4	18	0.0	5.3	4	23	4	22	0.0	4.3
R1/273		W1/273	17.8	14.4	19.00	17.8	14.4	3.38	0.92		0.85							16	42	8	26	50.0	38.1						
R1/273		W2/273	14.9	14.9	0.13	14.9	14.9	0.02	0.56	1.48	0.56	1.41	4.67	132.8	119.9	119.7	0.1	4	23	4	22	0.0	4.3	16	45	8	29	50.0	35.6



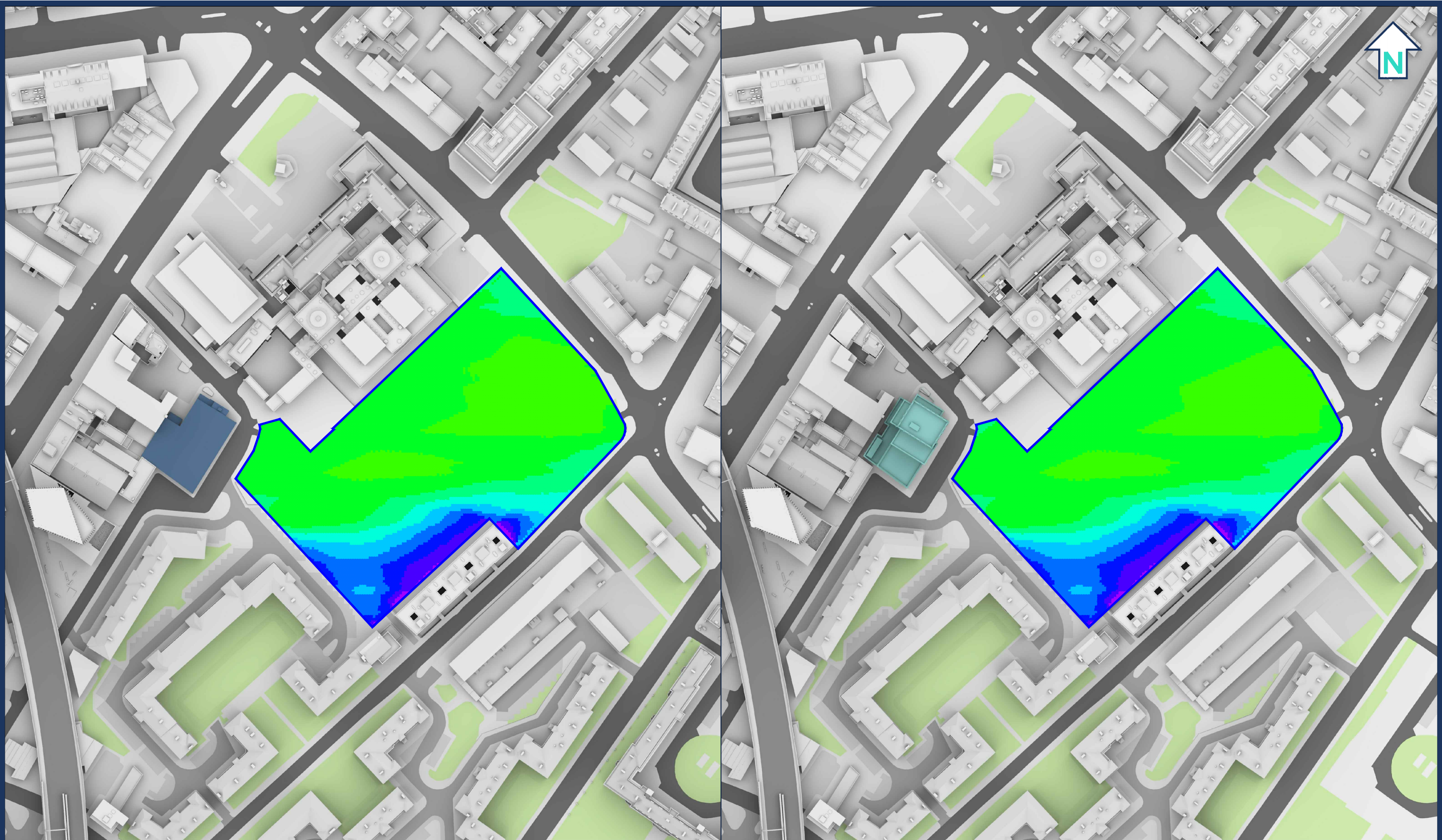
DAYLIGHT & SUNLIGHT ANALYSIS

AVONMOUTH HOUSE, LONDON
EXISTING VS PROPOSED SCHEME DATED 07-09-21
P2247 - rel5

Location			Vertical Sky Component (VSC)			Vertical Sky Component (VSC) (Balcony and walkway effects removed)			Average Daylight Factor (ADF)					No-Sky Line (NSL)				Annual Probable Sunlight Hours (APSH) (window)						Annual Probable Sunlight Hours (APSH) (room)					
Room	Room Use	Window																EXISTING		PROPOSED		%LOSS		EXISTING		PROPOSED		%LOSS	
			Existing VSC	Proposed VSC	%Loss	Existing VSC	Proposed VSC	%Loss	Existing ADF	Total ADF	Proposed ADF	Total ADF	%Loss	Whole Room sq ft	EXISTING sq ft	PROPOSED sq ft	%Loss	Winter %	Annual %	Winter %	Annual %	Winter	Annual	Winter %	Annual %	Winter %	Annual %	Winter	Annual
R1/281		W1/281	32.9	23.6	28.32	32.9	23.6	9.31	1.72	1.72	1.30	1.30	24.21	70.9	68.4	57.6	15.6	13	54	6	35	53.8	35.2	13	54	6	35	53.8	35.2
R1/282		W1/282	31.7	26.0	17.95	31.7	26.0	5.69	0.67	0.67	0.61	0.61	8.86	125.1	27.6	27.6	0.0	11	48	4	30	63.6	37.5	11	48	4	30	63.6	37.5
R1/283		W1/283	57.0	48.8	14.41	57.0	48.8	8.21	0.91		0.82							21	60	12	39	42.9	35.0						
R1/283		W2/283	82.0	70.7	13.73	82.0	70.7	11.25	1.82	2.73	1.55	2.38	12.97	173.3	157.5	157.5	0.0	21	75	11	55	47.6	26.7	21	75	12	57	42.9	24.0

Appendix 4:

Overshadowing Assessment



Sources: LRM Survey Services
2D Survey (received 07/06/21)
Avonmouth House, 6 Avonmouth Street, SE1 6NX - Topographical
Survey.dwg

Stitch Architects
Proposed Scheme 3D Model (received 13/07/21)
210712-Massing.skp

Proposed Scheme 3D Model (received 07/09/21)
210907-AvonmouthModel.skp
21235-STCH-XX-ZZ-DR-A-0200-0203.pdf
21235-STCH-SK-50-Geolocation.pdf

Key:

- 0-1 Hours
- 1-2 Hours
- 2-3 Hours
- 3-4 Hours
- 4-5 Hours
- 5-6 Hours
- 6-7 Hours
- 7-8 Hours
- 8-9 Hours
- 9-10 Hours
- 10-11 Hours
- 11-12 Hours
- 12-13 Hours
- 13-14 Hours
- ≥14 Hours

Scheme Confirmed:

Date:

Project: Avonmouth House

Drawn By:
HE

Scale:
1:1500

Date:
Sep 21

Title: Time in Sun Analysis
Existing vs Proposed Scheme 07/09/21
March 21st

Dwg No:
P2747/TIS/03

Rel:
03





Sources: LRM Survey Services
2D Survey (received 07/06/21)
Avonmouth House, 6 Avonmouth Street, SE1 6NX - Topographical Survey.dwg

Stitch Architects
Proposed Scheme 3D Model (received 13/07/21)
210712-Massing.skp

Proposed Scheme 3D Model (received 07/09/21)
210907-AvonmouthModel.skp
21235-STCH-XX-ZZ-DR-A-0200-0203.pdf
21235-STCH-SK-50-Geolocation.pdf

- Key:
- 0-1 Hours
 - 1-2 Hours
 - 2-3 Hours
 - 3-4 Hours
 - 4-5 Hours
 - 5-6 Hours
 - 6-7 Hours
 - 7-8 Hours
 - 8-9 Hours
 - 9-10 Hours
 - 10-11 Hours
 - 11-12 Hours
 - 12-13 Hours
 - 13-14 Hours
 - ≥14 Hours

Scheme Confirmed:

Date:

Project: Avonmouth House

Drawn By:
HE

Scale:
1:1500

Date:
Sep 21

Title: Time in Sun Analysis
Existing vs Proposed Scheme 07/09/21
June 21st

Dwg No:
P2747/TIS/04

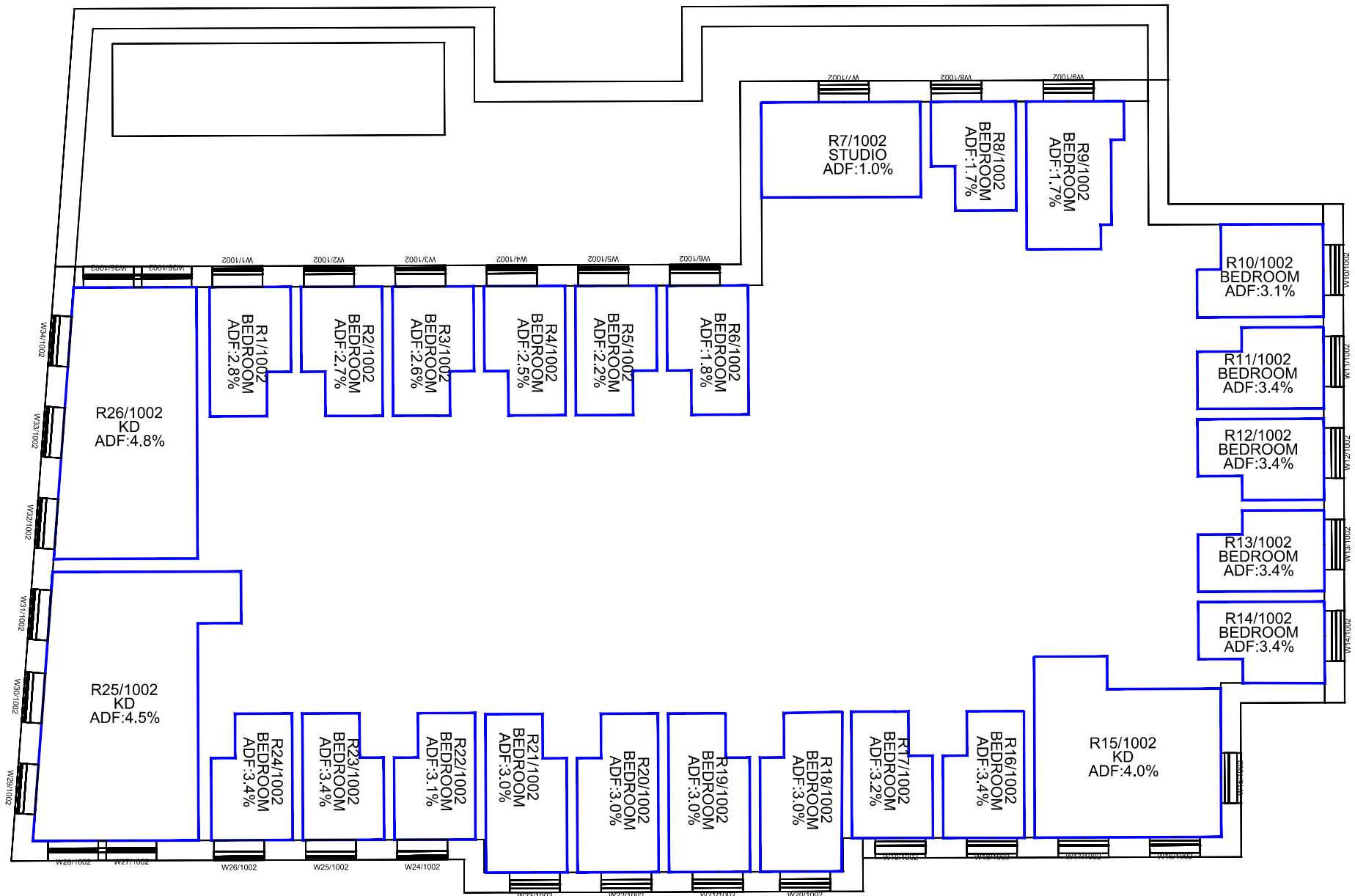
Rel:
03





Appendix 5:

Internal Daylight Assessment



Second Floor

Sources: LRM Survey Services
2D Survey (received 07/06/21)
Avonmouth House, 6 Avonmouth Street, SE1 6NX - Topographical Survey.dwg

Stitch Architects
Proposed Scheme 3D Model (received 13/07/21)
210712-Massing.skp
Proposed Scheme 3D Model (received 07/09/21)
210907-AvonmouthModel.skp
21235-STCH-XX-ZZ-DR-A-0200-0203.pdf
21235-STCH-SK-50-Geolocation.pdf
Proposed Scheme 2D Data (received 09/09/21)
21235-STCH-XX-02-DR-A-0103-Level 02.dwg
21235-STCH-XX-ZZ-DR-A-0300-Proposed building - Section AA.dwg
21235-STCH-XX-ZZ-DR-A-0201-Proposed building - East elevation.dwg

Key:

Existing Buildings

Proposed Scheme

Scheme Confirmed:

-

Date:

-

Project: Avonmouth House

Drawn By:

HE

Scale:

1:150 @ A3

Date:

Sep 21

Title: Internal BRE ADF Results
Proposed Scheme 07/09/21

Dwg No:

P2747/INT/02

Rel:

03



