

THE RUGBY POST - THE RUGBY FOOTBALL UNION (RFU)

PUBLISHED BY THE RUGBY FOOTBALL UNION, COMPILED BY THE RFU
COMMUNITY RELATIONS MANAGER

Our first community event on Twickenham Riverside:

TWICKENHAM RIVERSIDE REGATTA AND THE RECREATION OF THE HISTORIC CHARLIE SHORE REGATTA

Sponsored by The London Borough of Richmond upon Thames via a CIVIC PRIDE GRANT and the COMMUNITY LIAISON OFFICER OF THE RFU (THE RUGBY FOOTBALL UNION). The event was organised by Teresa Read, Berkley Driscoll and Jeremy Hamilton-Miller – Trustees of the REIC – the RICHMOND ENVIRONMENTAL INFORMATION CENTRE – a registered charity.

Berkley and I went on to form “TWICKENHAM ALIVE” to organize community events and Jeremy became a trustee of The Twickenham Riverside Trust.

The Leader of the Council, now Lord True, Leader of the House of Lords, wanted to extend THE GREAT RIVER RACE to Twickenham Riverside.

The Richmond Environmental Information Centre (REIC) subsequently received a Heritage Lottery grant (HLF) to investigate the history of Twickenham Riverside – a two-year project Memories of Twickenham Riverside. Trustees included Jeremy Hamilton-Miller, Berkley Driscoll and Teresa Read

THE RUGBY POST ISSUE 44

AUGUST 2011

PAGE 4

TWICKENHAM RIVERSIDE REGATTA - Front page of the Rugby Post and on
Page 4

A weekend of river related activities and fun on Twickenham Riverside
Featuring Rhythm Force on the Riverside

The Charlie Shore's Regatta (the recreation of a traditional event in the past) including a variety of stalls, fun fair and Shetland Pony Rides.

Saturday 17th September 2011

10.00-13.00 Charlie Shore's Regatta – The Embankment

10.00-18.00 Stalls – The Embankment

11.00-18.30 Children's Fairground

13.00-13.30 Regatta Prize giving

13.30-18.30 Music stage – Champions Wharf/The Embankment

16.00-18.30 River Race Finish

18.45-22.45 Rhythm Force

Sunday 18th September

11.00-18.00 Stand Up Paddleboarding Races & Displays – The Embankment

11.00-18.00 Stalls – The Embankment

13.00-18.30 Music stage – Champions Wharf/The Embankment

16.00-16.30 Paddleboarding races

COMPETITIONS were organised for residents and Richmond College students as follows:

1. Photography Competition: photographs were displayed at a prize giving in Clarendon Hall, York House, the Council offices. An exhibition of photographs is still available.

2. Video Competition: of the weekend events; members of the audience decided on the winners at an exhibition of work in Clarendon Hall the following week.

A special Charlie Shore dance by the REIC commissioned by the Richmond Environmental Information Centre to be performed on Twickenham Riverside at the start of the event. Photographs are available for exhibition.

(Note: Berkley and I worked with the Rugby Football Union to organise the Strawberry Hill Music and Fun Day for a number of years, eventually organizing it as Twickenham Alive.)

THE RUGBY POST ISSUE 46

APRIL 2012

PAGE 6

TWICKENHAM RIVERSIDE JUBILEE FESTIVAL 1st – 17th JUNE 2012

FULL TWO-WEEK PROGRAMME

Organised by Twickenham Alive (T. Read and B. Driscoll)

The programme included THE TWICKENHAM ALIVE BLUE MILE, a national Stand-Up Paddleboarding event.

THE RUGBY POST EDITION 47

SEPTEMBER 2012

PAGE 3

THE OPENING OF DIAMOND JUBILEE GARDENS BY PRINCESS ALEXANDRA

Lord True, Leader of Richmond Council, said, “The Diamond Jubilee Gardens look absolutely superb and will be a fantastic asset for everyone to enjoy for many years to come.

We promised in 2010 to do everything necessary to open the riverside for the people of Twickenham. We have now delivered on that promise.

The gardens are a credit to the local people who have fought for this for many years. It reflects just what can

be achieved by listening and working with residents in a spirit of co-operation and compromise. There is much

more to do in our programme for Twickenham revival. I hope all people will work together to help make that possible.

As the REIC we displayed the collection of historic photographs collected in the HLF project Memories of Twickenham Riverside.

PAGE 6 Article and photographs of river events during the Twickenham Riverside Jubilee Festival.

THE RUGBY POST ISSUE 48 JANUARY 2013

PAGE 2

As well as support from local businesses, key sponsors are the RFU and Richmond Council, supported by St James, Nat West, Tesco, Burger King, South-West Trains, Churchill Homes, Arthur's and the Barmy Arms. **A special thanks to Twickenham Alive and the Twickenham Riverside Trust.** Both organizations are listed in "Supporting Our Community"; Photos of both groups on the front page.

PAGE 6

Festive fun at the Diamond Jubilee Gardens on Twickenham Riverside. After 30 years of neglect, the site was renovated last year. Credit to Lord True, Richmond Council and the local people who have battled for years to have this area brought back into public use. (at the bottom of the page).

PAGE 9 TWICKENHAM FESTIVAL 6-30 JUNE 2013

The new Twickenham Festival will be sponsored by the Rugby Football Union, organised by Twickenham Alive and supported by the Twickenham Town Business Association, Richmond Council and the Twickenham Riverside Trust.

From 6th to 30th June 2013 – Locations include Twickenham Riverside, Church Street, the Diamond Jubilee Gardens, Radnor Gardens, Orleans House and others to be announced.

Provisional festival events include: 6 June D-Day Dance Twickenham Rowing Club, 7 June Church Street Market and Tug of War, 8 June Twickenham Alive Blue Mile Riverside, Church Street Market, St Mary's Church Fair, 12 June Jazz Cruise, 15 June Jubilee Gardens 80s Music Day, 16 June Twickenham Carnival, Riverside Market, 22 June Twickenham Alive

Dragon Boats, 23 June Radnor Gardens Family Fun Day, Wine Tasting Cruise, 29/30 June Riverside music at the Diamond Jubilee Gardens.

RUGBY POST ISSUE 49

PAGE 5

ICE RINK AT CHRISTMAS

Twickenham Alive (Berkley Driscoll and Teresa Read) have organized three community ice rinks as well as taking part in a two-year Heritage Lottery Project **The Most Famous Ice Rink in the World.**

Discussion with the Twickenham Riverside Trust

We discussed an ice rink in Diamond Jubilee Gardens with the Twickenham Riverside Trust but was agreed not to go ahead; it was understood that the swimming pool had not been removed and the Council could not guarantee that it would be safe to install a heavy ice rink and the necessary heavy equipment, such as chillers, glycol tanks and generator. There was some thought about an ice rink on The Embankment but as organizers of events on this site and the surrounding area we were aware of the flooding; traffic on the road, and the limited space available for a rink, essential heavy equipment and a skate exchange, changing area, reception, facilities for staff, etc.

Page 7 Twickenham Alive Riverside Festival 6 June to 7th July : music, paddleboarding races and dragon boat races and festival programme including the Twickenham Alive Charity Mile (a Stand-Up Paddleboarding race). Events were organized for the month from 8th June to 7th July **including** Eel Pie Row and **Sunday 30th June Family Fun Day on The Diamond Jubilee Gardens.**

RUGBY POST ISSUE 50

Riverside Festival 2013

The Twickenham Alive Riverside Festival organised by Twickenham Alive and sponsored by the RFU, will provide the town with four weekends of fun packed entertainment on or near the riverside.

The Festival was inspired by the success of the Twickenham Riverside Regatta in September 2011 and last year's Jubilee Riverside Festival - with photographs

TWICKENHAM ALIVE SPONSORED BY THE RUGBY FOOTBALL UNION

Page 9

Display of the full Programme of Events throughout the month of June with photographs of events in Twickenham.

Page 12

RFU & TWICKENHAM RIVERSIDE TRUST

The Twickenham Riverside Trust is a charitable organisation, composed of local people who care about the immediate and long-term future of Twickenham Riverside (particularly the site now known as the Diamond Jubilee Gardens).

In 1935 the Twickenham lido swimming pool was opened on the riverside site. This pool was closed for repairs in 1981.

The pool site lay derelict for 24 years until 2005 when a playground and cafe were opened on a corner of the site.

Eventually after a public campaign, the Diamond Jubilee Gardens were opened to the public for the first time on 24th

June 2012 with a celebration organised by the Twickenham Riverside Trust, Richmond Council and sponsored by the Rugby Football Union

TRT is currently working with Richmond Council to provide a programme of events at the Diamond Jubilee Gardens. These events will be sponsored by the Rugby Football Union.



THE GREAT RIVER RACE & TWICKENHAM RIVERSIDE REGATTA

WITH RHYTHM FORCE MUSIC SPECTACULAR
Saturday 17 & Sunday 18 Sept 2011
Supported by the RFU and Richmond Council

From its debut in 1988, the Great River Race is now established in the sporting calendar with an intriguing mix of colour, spectacle, intense competition and casual fun, it combines all the ingredients that made London's other marathon such a success.

Starting at London Docklands, it runs through London's many historic landmarks, to finish, after 21 miles of rowing, at Ham riverside opposite Twickenham's Orleans Gardens from 4.15pm.

The Great River Race attracts both the true racer and the leisure rower and,

as The London River Marathon, is doing for rowing what the Road Marathon did for running.

With entries of well over 300 boats, carrying some 2,400 competitors and attracting tens of thousand of spectators, the Great River Race has become the biggest and most prestigious event of its kind in Europe.

This year this great family event has now been enhanced by the Twickenham Riverside Regatta, providing two days of river events, riverside fun, live music, kids entertainment, crafts and charity stalls from Twickenham pool site along the embankment to Orleans Gardens. This culminates on both nights in the Rhythm Force music spectacular.

IN THIS ISSUE



RFU LOCAL RESIDENTS' ENGLAND TICKETS BALLOT



MUSIC DAY RAISES £10,000 FOR STRAWBERRY HILL HOUSE



SUPPORTING LOCAL SCHOOLS AND SCHOOL SPORTS



PEEL2SAVE A GREAT LOCAL FUNDRAISING INITIATIVE



RHYTHM FORCE ON THE RIVERSIDE BIG MARQUEE MUSIC SPECTACULAR Orleans Gardens, Twickenham Saturday 17 & Sunday 18 Sept 2011

A musical showcase with the British Army's finest musicians featuring Rock, Pop, Soul, Jazz and Celtic sounds joined by some great covers bands and the stunning Army Big Band

6.45-10.45pm - 5 bands each night only £13

(limited to 1,000 each night) see page 5

For tickets and information - www.twickenhamalive.com

SUPPORTING OUR COMMUNITY

Annual sponsorship and financial commitments

- Richmond upon Thames Council Match Day Street Cleansing and Mobile Toilets
- Richmond upon Thames Council Match Day Traffic Management and Twickenham Event Zone
- Free Event Day Shuttle Buses
- 21 Local Schools in Twickenham, Whitton and Hounslow
- Richmond upon Thames Primary Schools' Sports Day
- Strawberry Hill Music & Fun Day
- Richmond AID - Advice and Information on Disability
- Richmond Borough in Bloom flower baskets in Twickenham
- St Margarets Summer Fair
- Crown Road Summer Fair
- St Margarets Christmas Fair
- Whitton Business Association
- Whitton Christmas Fun Day
- Whitton St George's Day
- Homelink Day Respite Care Centre Whitton
- Rhythm Force Kneller Hall
- Richmond Concert Society
- Twickenham Gardening Association
- Twickenham Operatic Society
- Ivybridge Estate Summer Fun Day
- Ivybridge Residents Christmas Party
- Whitton PHAB Club
- Whitton Restroom for Senior Citizens
- Isleworth Public Hall

Recent Community Support

- St Margarets Traders
- Sacred Heart School Teddington
- Twickenham Festival
- Junior Diabetes Research

RFU Community Relations

If you would like information on the RFU in the Community or comment on event day matters, contact Fraser Cullen, RFU Community Relations Manager, RFU, Rugby House, 200 Whitton Road, Twickenham TW2 7BA. 020 8831 6533 or frasercullen@rfu.com

Latest event info:

www.rfu.com/TwickenhamStadium

Photos: www.leothephotographer.co.uk
Fraser Cullen, Getty Images.

A NEW STATION FOR TWICKENHAM



Richmond Council is considering a planning application by Solum Regeneration for redeveloping Twickenham Station. Solum is a joint venture between the station owners Network Rail and their developer partner Kier Property.

The RFU is not part of this arrangement. However, the RFU, as a significant local employer and major contributor to the local economy, believes that after two years of negotiation and amended plans, the current scheme is the best and only option for Twickenham.

The RFU's only involvement at this stage is the management of supporters on match days and related facilities such

as toilets and disabled access. Working with the authorities who support us on match days, we are confident that the proposed new station will provide significant improvements.

The Rugby World Cup, the world's third biggest sporting event, coming to Twickenham in 2015, is projected to generate over £2billion for the UK economy, this is also an important consideration.

Over 90% of the station's five million users each year are commuters and the general public. Less than 10% are rugby supporters. However, supporters attending events at Twickenham Stadium generate tens of millions of pounds for the rail operators and local businesses every year.

There is no Plan B

At the current time there is no alternative scheme being considered for Twickenham Station, and it is unlikely that there will be in the short term.

If the station does receive planning consent, the RFU will be working with Richmond Council, Solum, Network Rail and South West Trains to ensure Twickenham really benefits.

This is a step towards regenerating Twickenham town centre.



RUGBY POST AVAILABLE FROM THE RUGBY STORE AND AT WWW.RFU.COM

The RFU's community magazine Rugby Post is distributed to over 30,000 homes and businesses local to Twickenham Stadium.

The magazine is published three or four times a year and contains information on RFU community relations activities, stadium events, event day information and the residents' ticket ballots. If you do not receive it regularly, copies are available from Rugby House, the Rugby Store in York Street, Twickenham, some libraries and www.rfu.com/News/Newsletters



LOCAL RESIDENTS' TICKETS BALLOT

TO BUY TICKETS FOR RBS 6 NATIONS MATCHES

For each major England match, 200 pairs of tickets are available to residents living in postcodes TW1, TW2, TW3 2 and TW7 7.

To enter for the chance to buy a pair of tickets complete the form opposite. Choose only **ONE** of the matches listed opposite and tick the box. **Send the application form** to Fraser Cullen, RFU Ballots, Rugby House, 200 Whitton Road, Twickenham TW2 7BA. **Closing date is Friday 25th November 2011.** Only one application per address. Tickets £65 & £56 each. Payment by card is subject to 5% transaction fee.

The RFU may use your personal data to send you occasional information by post from the RFU, its subsidiaries or associated companies about tickets or special offers to events at Twickenham Stadium.

Please tick ONE box only
 England v Wales Sat 25 February
 England v Ireland Sat 17 March
PLEASE WRITE CLEARLY

Name _____
 Address _____
 Postcode _____ Tel _____
 email _____

Only applications on this form or copy of it are valid.
Successful applicants will be notified by 9 December.



If you do not want to receive by electronic mail any information about tickets or special offers from the RFU, its subsidiaries, or associated companies please tick here ☐



TWELFTH NIGHT IN TWICKENHAM

The Richmond Shakespeare Society is a highly-respected amateur dramatic society based at the Mary Wallace Theatre by the riverside in Twickenham.

Founded in 1934 to perform Shakespeare's plays annually in the open air, they have grown to have a programme of eight productions a year by vastly differing playwrights of all eras, from ancient Greece to the modern day.

This year's open air show was Twelfth Night, one of Shakespeare's most enduring and best loved comedies, set in the enchanting fountain gardens of York House on Twickenham riverside and sponsored by the RFU. Another fabulous production blessed by fine weather over the week long show at the end of July, in a picnic in the park style, was the perfect summer evening's entertainment.

Owing to the packed audiences we would advise booking early next year for one of the highlights of the summer in Twickenham – www.richmondshakespeare.org.uk



THE GREAT RIVER RACE & TWICKENHAM RIVERSIDE REGATTA

**SAT 17 & SUN 18
SEPTEMBER**



A FUN PACKED WEEKEND FOR ALL THE FAMILY
Supported by the RFU, Richmond Council and eBay

THE GREAT RIVER RACE
Saturday 17 September 2011
21 miles from Docklands to finish
at Ham Riverside via Richmond
and Twickenham
**Colour, Spectacle, Competition and
Lots of Fun on the Riverside
from 1.00pm to 7pm**

- Over 300 boats, 2,400 competitors
- Tens of thousands of spectators on the riverside at Richmond & Twickenham
- Combines all the ingredients that made London's other marathon such a success

FREE events with Peterkin the Jester and Dutch Band Tartouffe. PLUS: Ferret Racing, Donkey Rides, Falcons, Tomahawk and Axe throwing, Try your hand at Musketry, Archery and Popinjay, Airbrush Tattooing, Face Painting, Refreshments and Beer Tent open from 1.00, live music at Ham Riverside.

- Free ferry from St Helena Pier to Ham starting at 12.00
- Hammerton's Ferry running to convey you to and from the Twickenham festivities and Rhythm Force.

For information, hospitality ashore/afloat, advertise in programme/finish screen - contact:

Stuart Wolff - 0208 398 9057
Stuart@greatriverrace.co.uk
www.greatriverrace.co.uk

**TWICKENHAM
RIVERSIDE REGATTA**
Saturday 17 & Sunday 18 Sept
Featuring
**Rhythm Force on the Riverside
& Charlie Shore's Regatta**
**A weekend of river related activities
and fun on Twickenham Riverside**

Saturday 17th September

10.00-13.00 **Charlie Shore's Regatta** – Embankment
10.00-18.00 **Stalls** – Embankment
11.00-18.30 **Children's Fairground** – Orleans Gardens
13.00-13.30 **Regatta Prize giving** – Finish Line
13.30-18.30 **Music stage** – Champions Wharf/Embankment
16.00-18.30 **River Race Finish** – Orleans Gardens
18.45-22.45 **Rhythm Force 2011** – Orleans Gardens

Sunday 18th September

11.00-18.00 **Stand Up Paddleboarding Races & Displays** – Embankment
11.00-18.00 **Stalls** – Embankment
11.00-18.30 **Children's Fairground** – Orleans Gardens
13.00-18.30 **Music stage** – Champions Wharf/Embankment
16.00-16.30 **Paddleboarding Prize giving** – Finish Line
17.00-17.30 **Raffle Draw** – Champions Wharf
18.45-22.45 **Rhythm Force 2011** – Orleans Gardens

For information
www.twickenhamalive.com

SUPPORTING LOCAL AND BRITISH FORCES CHARITIES

Supported by The Rugby Football Union and Richmond Council

RHYTHM FORCE 2011

BIG MARQUEE ROCK & POP SPECTACULAR
ORLEANS GARDENS, TWICKENHAM RIVERSIDE

CORPS OF ARMY MUSIC WITH
THE ARMY'S FINEST ROCK, POP, SOUL & JAZZ BANDS AND
SPECIAL GUESTS – THE BLUE MEANIES and SKALECTRIX

Saturday 17 & Sunday 18 Sept 6.45pm-10.45pm



Venue opens 5pm,
bar from 3pm



Five bands and
limited to 1,000
each night



A musical
showcase from the
British Army's finest
musicians featuring Rock, Pop, Soul,
Jazz Big Band, Folk and Celtic music performances

RHYTHM FORCE was launched in 2006 to showcase the Corps of Army Music's contemporary musical talent. The RFU has agreed to sponsor the highly popular event as part of the Great River Race and Twickenham Riverside Regatta Weekend on 17th and 18th September.

The Corps is delighted to have this opportunity to continue to develop its contemporary music, rock and pop bands. They hope that their loyal fans will continue to support

them until their return to traditional home Kneller Hall.

Each night there will be three of the best army contemporary groups and one special guest group. Both concerts will finish with the superb Army Big Band.

The concerts will maintain the picnic and party atmosphere inside the big riverside marquee. We do hope you will join us for what is sure to be two very special concerts on a special weekend in Twickenham.

Information on Rhythm Force 2011 is available at www.army.mod.uk/music and in Rugby Post at www.rfu.com/News/Newsletters Tickets are £13 (booking fees may apply) limited to 1000 each night – so hurry.

For further information and how to buy tickets www.twickenhamalive.com

SUPPORTING LOCAL AND BRITISH FORCES CHARITIES

RFU MUSIC & FUN DAY RAISES

An estimated 10,000 people attended the annual Strawberry Hill Music & Fun Day organised by the Rugby Football Union on a glorious sunny day in June.

As well as providing the community with a fun day out in the delightful gardens of Strawberry Hill House, the event raised £10,000 towards the restoration of the 18th century house.

Horace Walpole's little gothic castle of Strawberry Hill in Twickenham is the most important and influential of the early gothic revival of the 18th century. The renovation of the house is almost complete. For tours of this wonderful house see www.strawberryhillhouse.org.uk

Throughout the day the large crowd enjoyed live music, an array of craft and food stalls and lots of children's activities. The bands many with local connections, included the hugely popular Skalectrix, Robin Bibi Band, Nark Drool & The Shudders, Leaf Hound, Learn to Swim and special guests The Mustangs.

Thanks to event supporters Kevin@cleanacoverltd.co.uk, Carl at www.ctspro.co.uk and biggest of all to Ingrid van der Weide for event management.



£10,000 FOR STRAWBERRY HILL



STRAWBERRY HILL MUSIC DAY 2012

Owing to the RFU's involvement in the Queen's Diamond Jubilee celebrations next June, the Strawberry Hill Music Day may have to be postponed until 2013.

The Jubilee celebrations are being considered for Twickenham

Riverside and will have much of the live music and family fun activities that have made Strawberry Hill so popular. Further information will be available in the next Rugby Post, at www.twickenhamalive.com or from frasercullen@rfu.com.

For Twickenham community events see www.twickenhamalive.com

CHRISTMAS IN ST MARGARETS AND WHITTON

St Margaret Christmas Fair, Sunday 4th December (TBC), 11am – 5pm
Whitton Christmas Bonanza, Thursday 24th November, 3pm – 8pm

St Margarets Christmas Fair, Sun 4 Dec (TBC) see www.mystmargarets.com

Organised by the St Margarets Traders Association to help bring together the community and support local schools and charities. Attractions include children's show, funfair, stalls, games, competitions, street entertainers and live music. Local churches will lead the carol singing around the Christmas tree with mince pies and mulled wine. Father Christmas has also agreed to visit - www.mystmargarets.com.



Whitton Christmas Bonanza, Thurs 24 Nov

Organised by the Whitton Business Association. The High Street will be closed to traffic from 3pm to 8pm. See the new Whitton Christmas tree, fun and games, carol singing, bands and music, children's entertainment, stalls and 'switch on' with Father Christmas at 6pm – www.whittontowncentre.co.uk



Events supported by



HOMELINK CHARITY BALL – A GREAT NIGHT OUT FABULOUS VENUE & SUPPORTING A SPECIAL LOCAL CHARITY

The Live Room, Twickenham Stadium
Saturday 12th November

Drinks Reception RFU's Rose Suite 7pm – Dinner 8pm
Tickets £60 include pre-dinner drink,
3 course meal and wine

Dancing to the Rock n' Roll sounds of Nark Drool & The Shudders
Raffle and Auction – including tickets to England's RBS 6 Nations matches.
Dress code: Lounge Suit or Black Tie.

For tickets: Jane Gater 020 8894 4834 / janegater@blueyonder.co.uk
To advertise in the programme: Brian Jones 020 8941 1422 /
brianmj7@hotmail.com

Homelink is a day respite centre in Whitton, supporting local carers of any age who give help and care to a partner, relative, friend or neighbour.

Homelink is supported by the Rugby Football Union

www.homelinkdaycare.co.uk



FUN ACTIVITIES, TRAINING AND AUTOGRAPHS



Some 3,000 England fans were at Twickenham Stadium on 9th August, to see the England squad training.

The day started at 1.30pm with adults and children joining in the free rugby activities including coaching clinics run by the Rugby Football Union's community rugby coaches and fun inflatables to practice their skills.

After the activities, the highlight was watching training then an autograph session with the senior England squad.



PEEL2SAVE – THE ULTIMATE FUNDRAISER

BENEFITTING LOCAL BUSINESSES AND SUPPORTING COMMUNITY GROUPS, SCHOOLS AND CHARITIES



**WIN TICKETS TO
RBS 6 NATIONS
ENGLAND v WALES**
Sat 25 Feb 2012 or
ENGLAND v IRELAND
Sat 17 March 2012

Every local school, charity or organisation that signs up to Peel2Save Twickenham before Mon 28 November, will be entered into a draw to win one of three pairs of tickets to RBS 6 Nations matches

The Peel2Save Twickenham fundraising voucher card provides businesses in the Twickenham area with free advertising and marketing, while supporting fundraising for local schools, charities and community organisations. All at no cost to them.

The Peel2Save voucher card is sold by the participating local organisations. The card costs £10 but has around £300 worth of special offers and discounts to restaurants, cafes, bars, leisure facilities and businesses. The vouchers are valid for a year so can be used by local people as and when they wish.

For every card sold, £5 goes directly to the participating school, charity or organisation for their cause.

These vouchers serve to raise awareness of the participating businesses, bring new customers to them as well as raise much needed funds for local community organisations.

Peel2Save Twickenham is a fabulous and viable community initiative where everyone's a winner! Sponsored by the local community information website www.Guide2Richmond.com, and is supported by the Rugby Football Union.

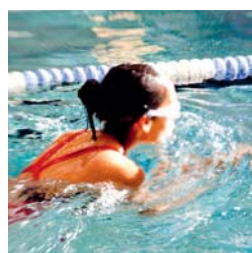
For information contact Patriona Briggs on 07756 638 979
Email: Patriona@Guide2Richmond.com
Web: www.Guide2Richmond.com
Twitter: [@G2Richmond](https://twitter.com/G2Richmond)



find your oomph at twickenham

Book a free day at Virgin Active Twickenham and you'll discover exactly what it's like to be part of a world class club with state-of-the-art equipment, a fabulous pool, and an amazing range of classes. In fact, taking better care of yourself has never been so attractive. So find out how to rediscover your Oomph!

Book your free day by calling 0208 843 7810.



RFU EDUCATION PARTNERSHIP

RFU SUPPORTING LOCAL SCHOOLS

The aim of the RFU's Education Partnership is to provide real benefits for 21 schools in our local community and to contribute to the health and wellbeing of local children. This involves 15 schools from the Borough of Richmond upon Thames and six from Hounslow Borough.

Each school receives an annual financial grant for sports and leisure and an invitation to visit The World Rugby Museum & Stadium Tour free of charge. There is also the opportunity for schools to apply to a special projects fund for initiatives covering sport, leisure, creative and environment.

The RFU also sponsors Richmond upon Thames Primary Schools' Borough Sports Day.

PARTNERSHIP SCHOOLS

TWICKENHAM

Archdeacon Cambridge's CE School
Orleans Infant School
St Mary's CE School
St Stephen's CE Junior School
Trafalgar Infant School
Trafalgar Junior School
Orleans Park School
Waldegrave School for Girls

WHITTON

Bishop Perrin CE School
Chase Bridge School
Heathfield Infant School
Heathfield Junior School
Nelson School
St Edmunds RC School
Twickenham Academy

HOUNSLOW

The Heathland School

ISLEWORTH

Ivybridge Primary School
Worple Primary School
St Mary's RC School
Isleworth Blue CE School
Gumley House Convent School

RICHMOND UPON THAMES PRIMARY SCHOOLS SPORTS DAY



Children from 34 Richmond upon Thames primary schools competed at the St Mary's University College sports ground in Twickenham in the 46th annual borough sports day on Wednesday July 6th.

More than 500 young competitors took to the track throughout the day in this annual athletics event.

The sports day has been sponsored by the Rugby Football Union since 1929

when Twickenham Rugby Ground was the venue for the Twickenham schools sports day. In 1965 the sports day for the first time involved all primary schools in the new borough

The overall winner was St Edmunds RC School from Whitton. Teddington's Sacred Heart and Collis schools were also rewarded for their success. The Mayor of Richmond upon Thames, Cllr Clare Head, presented the trophies.



WHITTON LIONS RFC



WHITTON'S FIRST AND ONLY RUGBY CLUB IS RECRUITING FOR NEW PLAYERS OF ALL LEVELS (18+)

CONTACT:
AIDAN: 07872 393 992
GARETH: 07887 911 076

FACEBOOK: WHITTON LIONS RUGBY CLUB
EMAIL: WHITTONLIONS@GROUPS.FACEBOOK.COM
WEBSITE: WWW.WHITTONLIONS.CO.UK

TRAINING 7:30PM EVERY THURSDAY

OLD LATYMARIANS WILS CRESCENT WHITTON, TW3 2JD



EVENT DAY CONTROLLED PARKING ZONE



Signs around the stadium show details of when event day parking controls are next in operation

The Event Day Controlled Parking Zone (Zone R) is operated by the London Boroughs of Richmond upon Thames and Hounslow.

The aim of Zone R is to provide parking for local residents and their visitors and to deter stadium visitors from parking in local roads.

How Zone R works

The date of each event and the hours of operation are displayed on signs at entry points to Zone R which includes the HM and C Zones.

Outside the hours of operation, there is no restriction on parking in marked bays or on yellow lines, unless indicated by time plates. However, this does not apply to the HM and C Zones where restrictions apply.

Residents within Zone R must display their Residents' Permits on event days. The permits are FREE and valid in any residents' bay within Zone R when operational on event days.

Permits are issued by post and application forms can be obtained by Richmond Borough residents from 020 8744 2131 between 9.00am and 5.00pm Monday to Saturday. Hounslow Borough residents can call 020 8583 6666 between 8.45am and 4.15pm Monday to Friday.

Visitors' permits are also available free of charge. For further information please call the telephone numbers listed above.

Blue disabled badge holders can park free in residents' bays and for up to three hours on single yellow lines, providing there are no restrictions.

Event day parking information:
www.richmond.gov.uk/parking
www.hounslow.gov.uk

PARKING ZONE SCHEDULE 2011/12

Hours of operation 10am- 6pm or as advised on Event Day signs in roads close to the stadium.

Saturday 3 September
Saturday 26 November TBC
Tuesday 27 December
Saturday 25 February
Saturday 17 March
Saturday 28 April
Saturday 12 / Sunday 13 May
Saturday or Sunday 20 May TBC
Saturday 26 May
Sunday 27 May TBC

The Boroughs of Richmond upon Thames and Hounslow are responsible for the implementation and enforcement of the Event Day Controlled Parking Zone.

Event Day Parking Helplines
Richmond Council 020 8744 0462
Hounslow Council 07852 310713

EVENT DAY TEMPORARY ROAD CLOSURES



**TEMPORARY ROAD CLOSURES LINE
ON EVENT DAYS PHONE 020 8831 6604
OR www.twitter.com/lbrut**

In the interests of public safety, the police can authorise road closures before and after events.

The roads that can be affected are Rugby Road, Whitton Road, London Road and to support traffic dispersal after major events, access to the A316 from Hospital Bridge Road.

As a guide, road closures will be implemented for events attended by more than 25,000 or at the discretion of police should public safety become an issue. Normally the closures will be from half an hour, up to two hours for capacity events.

Twickenham Police have an event day information line on 020 8831 6604. This has a recorded message about road closures on the event day. At other times call 020 8247 7193. Information on the day also available at www.twitter.com/lbrut

The Egerton Road barrier is open during road closures.

RFU EVENT DAY SHUTTLE BUS SERVICE

To encourage supporters to use public transport, the RFU provides up to 33 double deck buses running between the stadium and Richmond before and after matches and concerts.

The service operates from the A316 near Old Deer Car Park and close to Richmond Station for three hours prior to kick off. There is a charge of 50p.

For two hours after matches buses to Richmond/Hounslow East station are free.





TWICKENHAM
STADIUM

EVENTS FROM SEPTEMBER 2011 TO MAY 2012

2011		Time	Est. Att.	Tickets
SEPTEMBER				
Sat 3	Aviva Premiership Rugby London Double Header London Irish v Harlequins / Saracens v London Wasps	2.00pm / 4.30pm	55,000	BUY TICKETS
NOVEMBER				
Sat 26	Barbarians v Australia England Women v New Zealand Black Ferns	2.30pm (finish 4.00pm) 4.45pm	50,000	BUY TICKETS
DECEMBER				
Sat 3	The Heroes Rugby Challenge Supported by JP Morgan Northern Hemisphere v Southern Hemisphere	4.30pm	TBC	BUY TICKETS
Thurs 8	The Nomura Varsity Match Oxford University v Cambridge University	2.00pm	30,000	BUY TICKETS
Tue 27	Aviva Premiership Big Game 4 Harlequins v Saracens	4.30pm TBC	75,000	BUY TICKETS
2012				
FEBRUARY				
Sat 25	RBS 6 Nations ENGLAND v WALES	4.00pm	82,000	Available by Ballot Aug/Sept Rugby Post
MARCH				
Sat 17	RBS 6 Nations ENGLAND v IRELAND	5.00pm	82,000	Available by Ballot Aug/Sept Rugby Post
Wed 28	British Universities' & Colleges' Finals Women's Final / Men's Final	TBC	3,000	
APRIL				
Wed 4	Daily Mail RBS Schools' Day	TBC	7,000	
Sat 28	Army v Navy for the Babcock Trophy Combined Services U23 v Oxbridge U23	3.00pm 12.00noon	60,000	
MAY				
Sat 5	RFU Cup Finals & National U20 Final	TBC	5,000	
Sat 12 & Sun 13	Emirates Airline London 7s	TBC TBC	50,000 60,000	
Sat 19 or Sun 20	Heineken Cup Final	TBC	82,000	
Sat 26	Aviva Premiership Rugby Final	TBC	82,000	
Sun 27	ENGLAND v BARBARIANS Bill Beaumont Cup Final County Championship Shield Final	TBC	50,000	

NB. Events subject to change/others may be added. TBC: To Be Confirmed. Rugby Post: www.rfu.com/News/Newsletters
For latest information www.rfu.com/TwickenhamStadium RFU Ticket Office: 0871 222 2017 / tickets@rfu.com / www.rfu.com
[BUY TICKETS](#) Tickets when available: www.rfu.com/tickets and www.ticketmaster.co.uk or 0844 847 2492

England photo: GettyImages

TWICKENHAM STADIUM SAT 8 & SUN 9 SEPTEMBER



LADY GAGA
THE BORN THIS WAY BALL

WITH SPECIAL GUESTS
The Darkness AND LADY STARLIGHT

**CONCERT TICKETS BALLOT PAGE 3
2,200 DISCOUNT TICKETS FOR LOCAL RESIDENTS**

IN THIS ISSUE



**GREEN LIGHT FOR NEW
TWICKENHAM STATION**



**STRAWBERRY HILL MUSIC &
FUN DAY - SUNDAY 22 JULY**



**RETURN OF POOL SITE TO
TWICKENHAM COMMUNITY**



**TWICKENHAM RIVERSIDE
JUBILEE FESTIVAL 1-17 JUNE**



**SUPPORTING PERFORMING ARTS
IN OUR LOCAL COMMUNITY**

SUPPORTING OUR COMMUNITY

Annual sponsorship and financial commitments

- Richmond upon Thames Council Match Day Street Cleaning
- Richmond upon Thames Council Match Day Traffic Management and Twickenham Event Zone
- Free Event Day Shuttle Buses
- 20 Local Schools in Twickenham, Whitton, Isleworth and Hounslow
- Richmond upon Thames Primary Schools' Sports Day
- Strawberry Hill Music & Fun Day
- Richmond AID - Advice and Information on Disability
- Richmond Borough in Bloom flower baskets in Twickenham
- St Margarets Fair
- Crown Road Summer Fair
- St Margarets Christmas Fair
- Whitton Business Association
- Whitton Christmas Fun Day
- Whitton St George's Day
- Homelink Day Respite Care Centre Whitton
- Richmond Shakespeare Society
- Richmond Concert Society
- Twickenham Riverside Trust
- Twickenham Gardening Association
- Twickenham Operatic Society
- Ivybridge Estate Summer Fun Day
- Ivybridge Residents Christmas Party
- Whitton PHAB Club
- Whitton Restroom for Senior Citizens
- Isleworth Public Hall

Recent Community Support

- Twickenham Riverside Jubilee Festival
- St James' Church Twickenham
- Richmond May Fair Ball
- LBRuT's Richmond's Den
- Strawberry Hill Jubilee Jazz
- Mayor of Richmond's Charities
- Strawberry Hill Golf Club

RFU Community Relations

If you would like information on RFU Community Relations or event day matters, contact Fraser Cullen, Community Relations Manager, RFU, 200 Whitton Road, Twickenham TW2 7BA. frascullen@rfu.com or 020 8831 6533

Latest event info:

www.rfu.com/TwickenhamStadium

Photos: www.leothephotographer.co.uk
Fraser Cullen, Getty Images.

GREEN LIGHT FOR NEW TWICKENHAM STATION



Construction work on the new Twickenham Station development is set to start in September 2012 now that the plans have been formally approved by Richmond Council.

Following the announcement that neither the Secretary of State for Communities and Local Government nor the GLA will intervene in the Planning Committee decision December 2011, Richmond Council has formally signed off the legal Section 106 agreement and issued planning permission.

It is hoped that the work will commence in September and will be completed for Rugby World Cup in 2015.

Cllr Virginia Morris, Richmond Council's Cabinet Member for Environment and Planning said, "I am pleased that following months of uncertainty, the green light has now been given to start work on this dilapidated railway station."

John Robinson, from Solum Regeneration said, "The scheme delivers a new station for Twickenham and has been designed to manage increased passenger numbers forecast by Network Rail. It will significantly improve the experience for people with disabilities and pushchairs.

"Working on developments over the live railway is challenging, but our experience from projects at Epsom and Walthamstow will help us minimise any disruption to rail users and neighbours. Twickenham station will remain open as normal through the construction period."

Solum will recruit a Community Liaison Officer, who will work towards minimising the effects of the building work on those living nearby.

"There has been a huge amount of discussion on this application and I hope that everyone will now start looking forward and acknowledge the positive future that Twickenham has ahead."

Cllr Virginia Morris, Richmond Council

Richard Knight, the Rugby Football Union's Stadium Director, added, "The approval of a modern station complex with significantly improved facilities is welcomed by the RFU, benefiting the travelling public, visitors to the stadium and Twickenham town centre. The RFU has engaged widely on this scheme and we are confident that the new station will provide an impressive gateway to Twickenham for the several hundred thousand visitors from around the world during the 2015 Rugby World Cup."

RUGBY POST AVAILABLE FROM THE RUGBY STORE AND AT WWW.RFU.COM

The RFU's community magazine Rugby Post is distributed to over 30,000 homes and businesses local to Twickenham Stadium.

The magazine is published three or four times a year and contains information on RFU community relations, stadium events, event day information and the local residents' ticket ballots. If you do not receive it regularly, copies are available from Rugby House, the RFU Rugby Stores and Twickenham and Whitton libraries. Online at www.rfu.com/News/Newsletters



CONCERTS AT TWICKENHAM STADIUM

LADY GAGA THE BORN THIS WAY BALL WITH VERY SPECIAL GUESTS THE DARKNESS & LADY STARLIGHT

Twickenham Stadium Sat 8 & Sun 9 Sept

In this brand new tour, Lady Gaga will perform her latest album *Born This Way* as well as music from both *The Fame* and *The Fame Monster*. The *Born This Way Ball* is produced by Live Nation.

Supporting Lady Gaga will be the newly reformed British rock band THE DARKNESS and Lady Gaga's long time performance partner and DJ, LADY STARLIGHT.

DISCOUNTED TICKETS FOR LOCAL RESIDENTS

The 16 concerts hosted at Twickenham Stadium since 2003 have seen 17,200 discounted tickets allocated to local residents.

Concerts are often sold out. However, the RFU retains 1,100 discounted tickets for every concert for local residents available by ballot in Rugby Post prior to any concert.

RFU CONCERT LINE Operational on Sat 8 & Sun 9 Sept only

If residents local to the stadium do have any concerns or issues about concerts or require information, please call the RFU concert line on 07764 569402. The helpline will operate from 1pm to 11.30pm on the concert days only.



LADY GAGA LOCAL RESIDENTS' TICKET BALLOT SATURDAY 8th & SUNDAY 9th SEPTEMBER 2012

The RFU has reserved 2,200 tickets available for purchase by local residents at a 15% discount.

If you live in postcodes TW1, TW2, TW3 2 and TW7 7, you are eligible to enter the ballot to buy two tickets.

Successful applicants can purchase a pair of tickets.

The first 550 drawn will be able to purchase a pair of discounted tickets for **Saturday 8th September**.

The second 550 drawn will be able to purchase a pair of discounted tickets for **Sunday 9th September**.

Closing date is Tuesday 29th May 2012.

To enter, please fill out **ALL** the details requested and send the application form with a **self addressed envelope (no stamp reqd)** to: Fraser Cullen, RFU Concerts Ballot, Rugby House, 200 Whitton Road, Twickenham TW2 7BA.

Only successful applicants will be notified by Tuesday 12 June.

Note for successful applicants: For callers to the RFU Ticket Office, paying by cash, there is a £3 transaction fee. If you choose to pay for your two tickets by card a total transaction fee of £9.80 will apply. Details will be sent to successful applicants.

If successful I would like to buy two discounted £50 upper tier seat tickets available at £42.50 each.
PLEASE PRINT CLEARLY

Name _____

Address _____

Postcode _____ Tel _____

Email _____

The RFU may use your personal data to send you occasional information by post from the RFU, its subsidiaries or associated companies about tickets or special offers to events at Twickenham Stadium.

If you **do not want to receive by electronic mail** any information about tickets or special offers from the RFU, its subsidiaries, or associated companies please tick here ☐

THE JUBILEE JAZZ FESTIVAL 2012

STRAWBERRY HILL HOUSE 3rd & 4th JUNE



Celebrate the Queen's Diamond Jubilee in the beautiful grounds and big jazz marquee at Strawberry Hill House. Sunday 3rd & Monday 4th June.

Gates open 12noon - music 2pm to 10pm
Waldegrave Road, Twickenham TW1 4ST

A two day festival of jazz in honour of Queen Elizabeth's Diamond Jubilee.

An outstanding programme of jazz, from classic mainstream and bebop to the greats of modern jazz in the UK, supported by the RFU.

Includes Alan Barnes, Liane Carroll, Gilad Atzmon, Kelvin Christiane, Ian Shaw, Don Weller, Chris Biscoe, Toni Kofi, The Three Tenors and many more.

Each evening will climax with fabulous performances from celebrated all star big bands. On Sunday 3rd June this will be the Back To Basie Orchestra. On Monday 4th June The Echo's of Duke Ellington's Orchestra will present Ellington classics and excerpts from "The Queens Suite".

Guests will have access to the newly restored grounds for walks and picnics. An extra marquee will host the Jazz Arts and Crafts Festival with locally sourced food and beverage stalls adding their own flavour to the event. Supporting the continued renovation and maintenance of Horace Walpole's gothic masterpiece.

Day Tickets £35, Two Day Tickets £68
Children under 12 free (but must be registered)
available at www.strawberryhillhouse.org.uk
weekend breaks and accommodation at
www.jubileejazz.destinationrichmond.co.uk
www.jubileejazz.com

RICHMOND SHAKESPEARE SOCIETY PRESENTS

ROMEO & JULIET – SUN 15th TO SAT 21st JULY

Open Air Shows in the Fountain Gardens, Twickenham



The Thames flowing softly to one side, pines touching a moonlit sky, the graceful naked ladies statues grouped around their pool, all make for a stunning setting for Shakespeare's most romantic drama.

This tale of passionate love across the divide of feuding families with its inter-generational conflicts and painful twists of fate provides an array of excellent parts.

From the first half with brawls, humour and colourful characters, to the rich poetry of the famous balcony scene. While in the second half events hurtle towards the fated tragic ending.

The RSS will be performing nightly, except Wednesday, with a matinee on the Saturday. Bring along your picnic chairs, sit back and enjoy the show. There is a licensed bar on site. Why not experience live theatre in the wonderful outdoor setting of the Fountain Gardens on Twickenham Riverside?

Romeo & Juliet

The Fountain Gardens, Champions Wharf, the Embankment, Twickenham

From Sun 15 to Sat 21 July (except Wed)
at 7.45pm, matinee 3pm on Sat 21 July.

Tickets £12 & £14 (conc available) from 21 May
from The Mary Wallace Theatre on 020 8744 0547 or
www.richmondshakespeare.org.uk

Limited tickets available on performance nights.
No seats so please bring a rug or chairs. Licensed Bar.

RETURN OF TWICKENHAM'S POOL SITE FOR ALL LOCAL PEOPLE TO ENJOY

COMMUNITY OPENING FUN DAY SUNDAY 24 JUNE

www.twickenhamriverside.org

Work has begun to create an open public space for the Twickenham community with the first new gardens in a generation, which will open soon.

The new Diamond Jubilee Gardens is phase one of Richmond Council's promise to open Twickenham riverside for all people to enjoy and make 2012 a year for celebration.

When the initial work is finished there will be a grassed area behind Café Sunshine and a park space in front of the old diving board, which will be kept as a memorial to the long struggle to re-open the site. A section closest to the old cafe restaurant will be paved to become a public square which will provide a platform for a number of activities.

For latest information: www.twickenhamalive.com and www.richmond.gov.uk/twickenham_riverside



AFTER 32 YEARS OF DERELICTION TWICKENHAM REDISCOVERED

LORD TRUE, LEADER OF RICHMOND COUNCIL:

“This administration promised to do everything necessary to open the riverside for the people of Twickenham. We are now delivering on that promise.

It is brilliant to see that, after so many years of wrangling, bureaucracy and political footballing, action is finally being taken. This should be credited to the local people who have fought for this for many years. This site will be a sign of what can be done by listening and working with residents.”

The Rugby Football Union will be supporting Richmond upon Thames Council and the Twickenham Riverside Trust, to ensure that the new gardens will become a focus for the community's use of the riverside.



January 2012 Derelict - Closed to the public for 32 years



March 2012 Progress - Richmond Council's contractors on site



RFU contributed to children's play facilities

WHAT HAPPENS NEXT ?

Phase Two of the regeneration of Twickenham Riverside, which will include the existing buildings next to the pool site, will begin later this year with a community consultation. This will be following the lines of the ideas emerging from the Twickenham Area Action Plan.



Councillor True and Councillor Morris on site

TWICKENHAM RIVERSIDE JUBILEE FESTIVAL 2012

TWICKENHAM RIVERSIDE, CHURCH ST AND THROUGHOUT TWICKENHAM FRIDAY 1st - SUNDAY 17th JUNE



Twickenham's Riverside Jubilee Festival will feature a considerable number of community activities throughout Twickenham. Lots of fun events, music, entertainment and action from 1st to 17th June.

FESTIVAL PROGRAMME

Some events and times subject to change
See www.twickenhamalive.com

Friday 1st June

Tug of War

17:00 - Barmy Arms, The Embankment

Saturday 2nd June

Charlie Shore's Regatta

10.00 to 20.00 - The Embankment

Water Zorbing

10.00 to 20.00 - The Embankment

Shetland Pony Rides

10.00 to 20.00 - Statue Gardens

Stalls

10.00-19.00 - The Embankment

Childrens Fairground

10.00-20.00 - The Embankment

Live Music Stage

14.00-18.00 - The Embankment

Church Street Craft Market

10.00 to 18.00 - Church Street

St Mary's Church Fayre

10.00 to 15.00 - Church Street

Morris Dancers

12.00, 13.00, 16.00 - Church St/Embankment

Turner's House Open Day

10.00 to 12.00 - 40 Sandycombe Road

Pope's Grotto Tours

10.30 & 11.30 - Radnor House School, Cross Deep

Mary Wallace Theatre Open Day

10.00 to 18.00 - Mary Wallace Theatre, The Embankment

Twickenham Rowing Club Open Day

10.00 to 18.00 - Eel Pie Island

Sunday 3rd June

Strawberry Hill Jazz Festival

12.00 to 21.00 - Strawberry Hill House,

Monday 4th June

Strawberry Hill Jazz Festival

12.00 to 21.00 - Strawberry Hill House,

HANDS Fair

10.00 to 18.00 - Twickenham Green

Tuesday 5th June

Church Street Jubilee Party

10.00 to 18.00 - Church Street

Martial Arts Display

18.00 - The Embankment

Wednesday 6th June

Eel Pie Club- Accoustic Pretty Things

20.45 - The Cabbage Patch, London Road

Thursday 7th June

Jubilee Festival Cruise

18.00 to 21.00 - Min Y Don, Eel Pie Island

Friday 8th June

D Day Dance

19.00 - Richmond Yacht Club, Eel Pie Island

Saturday 9th June

Twickenham Alive Blue Mile

10.00 to 20.30 - The Embankment

Shetland Pony Rides

10.00 to 20.00 - Statue Gardens

Turner's House Open Day

10.00 to 12.00 - 40 Sandycombe Road

Pope's Grotto Tours

10.30 & 11.30 - Radnor House School, Cross Deep

Strawberries & Cream Afternoon

14.00 to 17.00 - Richmond Yacht Club, Eel Pie Island

Sunday 10th June

Twickenham Yacht Club Open Day

11.00 to 16.00 - Riverside

Tuesday 12th June

Royal Oak Jumblee

12.00 to 17.00 - Royal Oak, Richmond Road

Martial Arts Display

18.00 - The Embankment

Wednesday 13th June

Jubilee Festival Cruise

18.00 to 21.00 - Min Y Don, Eel Pie Island

Thursday 14th June

Comedy Night

20.00 - The Cabbage Patch, London Road

Friday 15th June

Italian Market

9.00 to 17.00 - Church Street

Saturday 16th June

SRB Dragon Boat Races

10.00 to 19.00 - The Embankment

Stalls

10.00-19.00 - The Embankment

Childrens Fairground

10.00-20.00 - The Embankment

Live Music Stage

14.00-18.00 - The Embankment

Italian Market

9.00 to 17.00 - Church Street

Sunday 17th June

Italian Market

9.00 to 17.00 - Church Street

Carnival

10.00 to 17.00 - Orleans House Gallery

Twickenham Folk Club - Dick Gaughan

20.00 - The Cabbage Patch, London Road

www.twickenhamalive.com

TWICKENHAM ALIVE SPONSORED BY THE RUGBY FOOTBALL UNION

TWICKENHAM ALIVE BLUE MILE

AT THE TWICKENHAM RIVERSIDE JUBILEE FESTIVAL
TWICKENHAM RIVERSIDE
ON SATURDAY 9TH JUNE FROM 10AM-8PM



ECOVER[®] BLUE MILE



OFFICIAL
CHARITY
PARTNER

GET INVOLVED & REGISTER AT:
www.thebluemile.org



©Pete Webb/WWF-UK



Join thousands of people across the UK, feeling good and raising vital funds to support the World Wildlife Fund's (WWF) work, to protect our rivers and seas by taking part in the Twickenham Alive Blue Mile on Saturday 9th June.

Incorporated within the Twickenham Riverside Jubilee Festival, the Twickenham Alive Blue Mile is a supported Blue Mile event with a one day programme of river activities and a sponsored walk for water.

The title sponsor race, the Ecover Blue Mile, will follow a course along Twickenham Riverside, in front of Eel Pie Island and finishing at Eel Pie Bridge. This will follow a series of Kayak and Stand Up Paddle Board sprint events and the One Mile Walk for Water along a beautiful and engaging circular route from Eel Pie Bridge, down river to Orleans Gardens (Hammerton Ferry) and back again.

Entry to the Twickenham Alive Blue Mile, in association with Naish UK and Active 360, includes all equipment – Kayak or Stand Up Paddleboarding (SUP) board, paddle and buoyancy aids.

Participants can enter individual events or can sign up for a package that will include the Blue Mile paddle and two sprint races. Participants are required to pre-register before the event online at www.thebluemile.org.

Whether you walk or paddle, all we ask is that you complete a mile on or near water to help protect our marine and freshwater environments.

www.twickenhamalive.com

TWICKENHAM ALIVE SPONSORED BY THE RUGBY FOOTBALL UNION

STRAWBERRY HILL MUSIC & FUN DAY

The Rugby Football Union presents a fundraising event to support Strawberry Hill House and local charities. In the ground of the house, Waldegrave Road, Twickenham TW1 4SX
SUNDAY 22ND JULY 2012 – 12NOON TO 7.30PM



Fun for all the family – Music Stage, Crafts, Charity Stalls, Kids' Rides, Food & Beer Tents.
Admission: Adults only £2 donation with children U15 free

LIVE MUSIC STAGE

SKALECTRIX: A dynamic ska, reggae and bluebeat band led by charismatic local vocalist Jim Sole. Recreating the sounds of Ska, Rocksteady and Two Tone, this energetic 8-piece band will take you back through the sounds of Trojan, Two Tone classics and fun of Bad Manners and Madness. www.skalectrix.com



THE MUSTANGS: A breath of fresh air on the British blues scene. They combine the power and punch of traditional R'n'B with great original songs and a show-stopping stage set. They have established a formidable reputation as one of the hardest-working and most charismatic bands in British blues. In 2010 the band was nominated for Best Band at the prestigious British Blues Awards. www.themustangs.co.uk



THE BLUE MEANIES: A 5-piece band who play 'music to dance to' hits from the 1960s through to the 1990s. The band members have an impressive musical pedigree having played and

recorded with Tears For Fears, Stackridge and The Korgis. Bass guitarist James Warren wrote the classic 1980's Korgis hit 'Everybody's Got To Learn Sometime' a song which always goes down well with audiences – especially when they realise the original composer is singing it! www.bathmeanies.co.uk



MARNER BROWN: Song-writing prowess and great musicianship, the band have always demanded attention. Featuring vocalist Fiachra Kerrigan and lead guitarist Aaron A Grimes they never fail to impress, with glowing praise coming from Ronnie Wood who said, "Marner Brown are really good. They have a bit of a Led Zep 'n' Roses type thing". Marner Brown is a band paving the way for the next generation of rock 'n' roll. www.marnerbrown.net



NARK DROOL & THE SHUDDERS: An authentic 50s rock 'n' roll band. Clad in drape jackets and drainpipe trousers, petticoats and ra-ra dresses, they specialise in toe tapping favourites from the late 50s and early 60s – Elvis and Eddie, Buddy and Billy, the Shadows and the Shangri-las. All on

the wrong side of 40 – with more freedom passes than plectrums on stage – so this is music that they know very well. www.narkdrool.co.uk



THE WILD ARCHIVE: Having met as local schoolboys, they are: Simon Macson lead guitar, Paddy McNicholas keys and beats, Dan Holt vocals. With a shared love of artists like Bon Iver, Brand New, Kate Bush, M83 as well as Springsteen, welcome to the world of The Wild Archive. www.thewildarchive.com



FRIDAY MISTRESS: Heavy drums, funky bass, hard rock guitar and pop/rock vocals with a message – Friday Mistress aren't your average rock band! The young Twickenham quintet strive to create a blend of feel-good heavy tunes, breaking away from more stereotypical genre limits. www.facebook.com/fridaymistress



A Date to Remember

Strawberry Hill Music & Fun Day

Rugby Football Union presents

Strawberry Hill House, Waldegrave Road, Twickenham
Sunday 22 July 2012, 12noon-7.30pm



Family Fun Day
supporting the restoration
of Strawberry Hill House

RFU Live Music Stage
Skalectrix
The Mustangs
The Blue Meanies
Marner Brown
Nark Drool & the Shudders
The Wild Archive
Friday Mistress

Live Music, Fun for Kids,
Crafts & Charity Stalls,
Food & Beer Tents and more...

Bring a
Picnic & Enjoy



For more information go to
www.twickenhamalive.com
Entry £2 donation
Children 0-15 free

To Benefit



ST MARGARETS GETS READY TO CELEBRATE

The Jubilee Fair, Crown Road, St Margarets, Sunday 3 June, 11am - 4pm

St Margarets will be turning red, white and blue to celebrate the Queen's Diamond Jubilee in Crown Road.

The fair will be just like the usual summer fair with lots of family fun and games but will also include a traditional street party to celebrate the Jubilee. If you are not having a street party of your own - then come along to Crown Road!

CHILDREN'S JUBILEE TEA PARTY

St Margarets traders will be hosting a tea party for the children who will be able to tuck into a jubilee tea whilst being entertained by a magician, Punch and Judy and some surprise guests. The children will also receive a special Jubilee gift to treasure. **More details about the fair and how you can book a jubilee tea party ticket at www.mystmargarets.com**

The fair, supported by the RFU, will also be supporting local schools and charities including Jonny's Journey.

To book a stall at the Jubilee Fair please contact events@mystmargarets.com for all other enquiries please contact traders@mystmargarets.com





CROWN ROAD JUBILEE FAIR

SUNDAY 3 JUNE 2012

11AM-4PM

CROWN ROAD ST MARGARETS TWICKENHAM TW1 3EE

LIVE MUSIC • HILARIOUS STREET ENTERTAINERS • SIDE STALLS • MAGIC SHOW
KIDS RIDES • PUNCH & JUDY • PIMMS STALL • GREAT FOOD
GAMES & COMPETITIONS • ST MARGARETS TUG-OF-WAR CHALLENGE
FACE PAINTING • TREASURE HUNT

Also join us for a JUBILEE TEA in support of Jonny's Journey
Tea party tickets available in advance from Look-In Video, 40 Crown Road,
also available on the day





To book a stall: events@mystmargarets.com

All other enquiries: traders@mystmargarets.com



design by prussian blue

ST MARGARETS FAIR SATURDAY 14th JULY



MOOR MEAD, ST MARGARETS

The popular St Margarets Fair is run entirely by volunteers and all profits are donated to four local schools, along with several local charities.

Supported by the Rugby Football Union, there is a full programme of entertainment throughout the day.

- The popular children's '5-a-side' football tournament in the morning on Moormead.
- During the afternoon there is the dog show on little Moor Mead across Hillview Road.
- Musical entertainment runs all afternoon on the stage with several live bands and local performers
- There are announcements, interviews and music throughout the day from Radio West Middlesex.
- Charity stalls, craft stalls and lots of fun for kids.

The fair organisers run the Tea Tent, Beer Tent, Pimms Stall, the BBQ, the Bric-a-Brac Stall, the Silent Auction, and the Coconut Shy. All profits from these stalls go direct to the local schools and charities.

www.stmargaretsfair.org

TWICKENHAM OPERATIC SOCIETY PRESENTS "AND THE WINNER IS....."

A CELEBRATION OF AWARD WINNING SONGS
ST GEORGE'S SUITE, TWICKENHAM STADIUM, SUN 24 JUNE - WED 27 JUNE

Twickenham Operatic Society's next great musical production will be "And The Winner Is.....", a celebration of many of the best known Oscar, Grammy, Brit and Tony Award winning songs.

TOpS members will be adding their own special touch with dancing and singing to match the wonderful lyrics of some of the best loved songs ever written.

Walk the red carpet, order your drinks and listen to excerpts from Lion King, Titanic, Mary Poppins, Priscilla, Queen of the Desert, A Queen Selection, Rent, Little Night Music, Sister Act, Sweeney Todd, and many many more.

TOpS, supported by the RFU, will be celebrating the Olympic Games, British Eurovision Song Contest Winners and paying a special tribute to The Military Wives.....if you love singing (or listening to singing!)... an evening not to be missed.

A great night out with award winning TOpS in the St George's Suite at Twickenham Stadium

Ring Jenny on 0208 866 4348 or
tickets@twickenhamoperatics.com
to order tickets £12.50 Mon-Wed and £10 Sun.
Full tables of 8 can also be booked. Licensed bar.
www.twickenhamoperatics.com



SEE THE BEST ON RUGBY'S BIGGEST STAGE

The Aviva Premiership Rugby Final is the culmination of the domestic season, with Harlequins and Saracens leading the charge, whoever makes the final it promises to be a fantastic day of action and a great atmosphere.

Local residents are entitled to a 10% discount on tickets for the final, visit the RFU Ticket Office with this ad to claim your tickets.



Tickets are subject to availability and booking fees apply.

12 -13 MAY 2012

TWICKENHAM STADIUM

*** MARRIOTT *
LONDON SEVENS**

TICKETS FROM £18
RFU.COM/LONDONSEVENS



**LOCAL RESIDENTS
TICKET OFFER
20% DISCOUNT ON
ADULT TICKETS**

**TO BOOK:
VISIT
WWW.TICKETMASTER.CO.UK
SEARCH MARRIOTT LONDON SEVENS**

**AND USE THE PASSWORD:
FUNKYTOWN7
OR VISIT THE RFU TICKET OFFICE
SHOWING THIS AD**

**BOOKING FEES APPLY AND
TICKETS ARE SUBJECT TO
AVAILABILITY. THE 20%
DISCOUNT APPLIES TO
ADULT TICKETS ACROSS
THE WEEKEND**



**Marriott
HOTELS & RESORTS**



RFU WINE CLUB

LOVE
RUGBY

LOVE
WINE

Join the **RFU WINE CLUB** before the end of the
TWICKENHAM RIVERSIDE JUBILEE FESTIVAL
on June 17 and enjoy a

20% DISCOUNT
by using the following promotional code at the checkout:
RFUWC60

www.rfuwineclub.com

TICKETS FOR LOCAL RESIDENTS

Tickets for Major England Matches

The Rugby Football Union (RFU) is a membership organisation and gives priority for major England match tickets to its member clubs, schools and constituent bodies. However, an allocation is available by ballot for local residents.

RFU Local Residents' England Tickets Ballot

The ballot covers major England matches only. Those successful in the ballot can purchase a pair of tickets not normally available for public sale. There are 200 pairs of tickets to purchase for each major England match and open to residents living in **TW1, TW2, TW3 2 and TW7 7**. The next application form will be in the autumn 2012 edition of the RFU's Rugby Post magazine delivered locally and at – www.rfu.com/News/Newsletters For most other matches tickets are available from the RFU Ticket Office at the stadium 0871 222 2017 or from Ticketmaster 0844 847 2492 or www.ticketmaster.co.uk

RFU SUPPORTING POLICE VOLUNTEERING



The Metropolitan Police Special Constabulary (MSC) and Volunteer Schemes are growing and no more so than in Richmond Borough.

Volunteers contribute to all aspects of police life and in so doing, have become valued members of "Team Met".

This is particularly evident through the special constabulary's regular involvement with the policing of RFU events. This team of trained, highly committed and motivated volunteers make up the serial of officers that work with British Transport Police and South West Trains outside Twickenham Station.

The role of the special constables is to ensure the safe management of traffic and pedestrians at this busy, critical part of the police operation. They are the first ones out and the last ones back in at the end of the day, and carry out their duties

with enthusiasm and professionalism.

Their volunteering means that a sergeant and seven constables, who would have been deployed, can be utilised to deal with other community and police issues.

For the majority, their volunteering arises from a sense of wanting to give something back to the community and most live in Richmond Borough or close by.

The RFU has acknowledged this unerring commitment to events at the stadium, and at a recent borough commendation ceremony, where nine MSC officers were recognised by Chief Superintendent Chalk for their outstanding performance, gave a pair of England international tickets and a voucher for the RFU store by way of a thank you to two officers.

For information: www.metpolicecareers.co.uk/specials

RFU SUPPORTING LOCAL ENTERPRISE

Richmond Council's New £10,000 social enterprise competition supported by the RFU

A competition to find local social entrepreneurs was launched by Richmond Council in March with a winner's prize package worth £10,000 along with prizes and support for other entrants.

The Richmond's Den, a joint venture from Richmond Council and the Richmond Social Enterprise Partnership, supported by the RFU and community sponsors, aims to encourage people with a business idea to get involved.

Entries will be invited from people who can demonstrate how their proposal could become viable and sustainable, or grow, with the right support, while maintaining a focus on a social or environmental objective.

Entrants are required to outline their business idea or proposal in 500 words. Those successful will be invited to pitch their ideas to a panel of top business and industry judges. The final event hosted by Richmond University on 28th June will showcase the finalists and provide a platform for the winner's presentation.

The winner will receive a package of benefits worth around £10,000 including a £5k business development grant, equipment and direct support from agreed sponsors. A range of benefits like mentoring and training will also be available for shortlisted entrants.

Cllr Pamela Fleming, Richmond Council Cabinet Member for Communities, Business and Culture, said, "The Richmond's Den competition aims to help our resourceful and entrepreneurial residents make a real difference to local people and the local economy.

"It will help people get 'one foot on the ladder', and encourage them to really think about how social enterprise can help them realise their ambitions and, deliver the wider social or environmental value that is at the very heart of social enterprise.

"In addition to financial support, the winners will get access to business support, networks and mentoring from the Council and competition partners."

The competition is open to social entrepreneurs who have ideas for ventures that place an emphasis on social good as well as financial return. The final winners will be announced at a gala event on 28 June. For information www.richmondsden.co.uk

Partners and sponsors



RFU SUPPORTING LOCAL BUSINESS



The Richmond Business Expo, which is organised by the bestofrichmond, was once again sponsored by the Rugby Football Union at Twickenham Stadium on 19th April.

The bestofrichmond champions recommended independent businesses in the borough through a dynamic website



and busy events calendar. The 2012 Expo was attended by some 80 local business exhibitors, over 1000 visitors and was heralded a great success by all involved.

"Being held at such a prestigious venue as Twickenham Stadium is obviously a healthy draw to both exhibitors and visitors," said Nick Taimitarha of the bestofrichmond. "We purposely encourage as wide a diversity

of businesses as possible to exhibit as it makes for a far more lively event. From restaurants to builders, law firms to printers, gardeners to marketeers - there's something for everyone."

The Expo provides an ideal opportunity for local residents to meet the local services available, as well a vibrant place for local business owners to network. A wealth of advice, support and solutions were available to visitors.

Expo partners, the RFU, Twickenham Experience, Richmond Council and Barclays hope that the 2013 event is even bigger and better. To get involved, visit www.richmondexpo.co.uk or thebestofrichmond on 020 3002 4100.

RFU EDUCATION PARTNERSHIP

RFU SUPPORTING LOCAL SCHOOLS

The aim of the RFU's Education Partnership is to provide real benefits for 20 schools in our local community and contribute to the health and wellbeing of local children. This involves 15 schools from the Borough of Richmond upon Thames and five from Hounslow Borough.

Each school receives an annual financial grant for sports and leisure and an invitation to visit The World Rugby Museum & Stadium Tour free of charge. There is also the opportunity for schools to apply to a special projects fund for initiatives covering sport, leisure, creative and environment.

The RFU also sponsors Richmond upon Thames Primary Schools' Borough Sports Day.

PARTNERSHIP SCHOOLS

TWICKENHAM

Archdeacon Cambridge's CE School
Orleans Infant School
St James's RC Primary School
St Mary's CE School
St Stephen's CE Junior School
Trafalgar Infant School
Trafalgar Junior School
Orleans Park School
Waldegrave School for Girls

WHITTON

Bishop Perrin CE School
Chase Bridge School
Heathfield Junior School
Nelson School
St Edmunds RC School
Twickenham Academy

HOUNSLOW

The Heathland School

ISLEWORTH

Ivybridge Primary School
Worple Primary School
Isleworth Blue CE School
Gumley House Convent School

MUSIC FOR SCHOOLS



The music for schools project supported by the RFU raised funds through live music for Whitton schools.

The concept of Colin Gillman, founder of Whitton.Ning community website, who organised a community concert attended by 300 people in The Live Room. The £700 profit was donated to St Edmunds RC School and Heathfield Junior School for their contribution to supporting the event.

WHITTON CELEBRATES ST GEORGE'S DAY 2012



Thousands celebrated Whitton's annual St George's Day with a big parade featuring marching bands, a costume parade, vintage cars and American motorbikes.

The parade included St George and the Dragon, the Mayor of Richmond, local schoolchildren, morris dancers and scouts, guides and brownies. The music was provided by bands, the Royal British Legion Youth Band, and the Horse Rangers.

The parade was followed by an afternoon of fun and music for all the family up and down the High Street. There were children's rides, live bands, crafts and charity stalls and traditional English fayre.

The event was organised by the Whitton Business Association (WBA) who help to promote Whitton as a good place to shop and visit. The WBA is supported by the Rugby Football Union.



EVENT DAY CONTROLLED PARKING ZONE



Signs around the stadium show details of when event day parking controls are next in operation

The Event Day Controlled Parking Zone (Zone R) is operated by the London Boroughs of Richmond upon Thames and Hounslow.

The aim of Zone R is to provide parking for local residents and their visitors and to deter stadium visitors from parking in local roads.

How Zone R works

The date of each event and the hours of operation are displayed on signs at entry points to Zone R which includes the HM and C Zones.

Outside the hours of operation, there is no restriction on parking in marked bays or on yellow lines, unless indicated by time plates. However, this does not apply to the HM and C Zones where restrictions apply.

Residents within Zone R must display their Residents' Permits on event days. The permits are FREE and valid in any residents' bay within Zone R when operational on event days.

Permits are issued by post and application forms can be obtained by Richmond Borough residents from 020 8744 2131 between 9.00am and 5.00pm Monday to Saturday. Hounslow Borough residents can call 020 8583 6666 between 8.45am and 4.15pm Monday to Friday.

Visitors' permits are also available free of charge. For further information please call the telephone numbers listed above.

Blue disabled badge holders can park free in residents' bays and for up to three hours on single yellow lines, providing there are no restrictions.

Event day parking information:
www.richmond.gov.uk/parking
www.hounslow.gov.uk

PARKING ZONE SCHEDULE 2012

Hours of operation 10am- 6pm or as advised on Event Day signs in roads close to the stadium.

Saturday 12 & Sunday 13 May
Saturday 19 May
Saturday 26 May
Sunday 27 May
Saturday 21 July TBC
Saturday 1 September
Saturday 8 September
Sunday 9 September
Saturday 15 September TBC
Sat 10, Sat 17, Sat 24 November
Saturday 1 December
Saturday 29 Dec
Saturday 2 February
Saturday 23 February
Sunday 10 March

The Boroughs of Richmond upon Thames and Hounslow are responsible for the implementation and enforcement of the Event Day Controlled Parking Zone.

Event Day Parking Helplines
Richmond Council 020 8744 0462
Hounslow Council 07852 310713

EVENT DAY TEMPORARY ROAD CLOSURES



**TEMPORARY ROAD CLOSURES LINE
ON EVENT DAYS PHONE 020 8831 6604
OR www.twitter.com/lbrut**

In the interests of public safety, the police can authorise road closures before and after events.

The roads that can be affected are **Rugby Road, Whetton Road, London Road** and to support traffic dispersal after major events, access to the A316 from Hospital Bridge Road.

As a guide, road closures will be implemented for events attended by more than 25,000 or at the discretion of police should public safety become an issue. Normally the closures will be from half an hour, up to two hours for capacity events.

Twickenham Police have an event day information line on 020 8831 6604. This has a recorded message about road closures on the event day. At other times call 020 8247 7193. Information on the day also available at www.twitter.com/lbrut

Egerton Road barrier is open during road closures.

RFU EVENT DAY SHUTTLE BUS SERVICE

To encourage supporters to use public transport, the RFU provides up to 33 double deck buses running between the stadium and Richmond before and after matches and concerts.

The service operates from the A316 near Old Deer Car Park and close to Richmond Station for three hours prior to kick off. There is a charge of 50p.

For two hours after matches buses to Richmond/Hounslow East stations are free.





TWICKENHAM STADIUM

EVENTS FROM MAY 2012 TO MARCH 2013

2012		Kick Off / Start Time	Est. Att.	Tickets
MAY				
Sat 5	RFU Cup Finals	From 11.00am	5,000	BUY TICKETS
Sat 12 & Sun 13	Marriott London Sevens	From 10.30am-7.50pm TBC	50,000	BUY TICKETS
Sat 19	Heineken Cup Final	From 9.30am-7.40pm TBC	60,000	BUY TICKETS
Sat 26	Aviva Premiership Rugby Final	5.00pm (finish 6.30pm)	82,000	BUY TICKETS
Sun 27	ENGLAND v BARBARIANS	3.00pm (finish 4.30pm)	82,000	BUY TICKETS
	Bill Beaumont Cup Final	2.30pm	50,000	BUY TICKETS
	County Championship Shield Final	11.30am 4.00pm		
JULY				
Fri 6-Sun 8	The Watchtower Convention	10.00am-5.30pm	Up to 20,000 each day	
Sat 21	Possible event TBC – www.rfu.com/TwickenhamStadium			
SEPTEMBER				
Sat 1	London Double Header	2.30pm & 4.30pm TBC	55,000	BUY TICKETS
Sat 8	LADY GAGA in CONCERT	6.30pm TBC -10.30pm	55,000	Local residents' ballot
Sun 9	LADY GAGA in CONCERT	6.30pm TBC -10.30pm	55,000	Summer Rugby Post
Sat 15	Possible event TBC – www.rfu.com/TwickenhamStadium			
NOVEMBER				
Sat 10	QBE International ENGLAND v FIJI	2.30pm (finish 4.00pm)	75,000	BUY TICKETS
Sat 17	QBE International ENGLAND v AUSTRALIA	2.30pm (finish 4.00pm)	82,000	Local residents' ballot Autumn Rugby Post
Sat 24	QBE International ENGLAND v SOUTH AFRICA	2.30pm (finish 4.00pm)	82,000	Local residents' ballot Autumn Rugby Post
DECEMBER				
Sat 1	QBE International ENGLAND v NEW ZEALAND	2.30pm (finish 4.00pm)	82,000	Local residents' ballot Autumn Rugby Post
Thurs 6	The Varsity Match Oxford University v Cambridge University	2.00pm (finish 3.30pm)	25,000	BUY TICKETS
Sat 29	Aviva Premiership Rugby Big Game 5 Harlequins v TBC	TBC	80,000	BUY TICKETS
2013				
FEBRUARY				
Sat 2	RBS 6 Nations ENGLAND v SCOTLAND	4.00pm (finish 5.30pm)	82,000	Local residents' ballot Autumn Rugby Post
Sat 23	RBS 6 Nations ENGLAND v FRANCE	5.00pm (finish 6.30pm)	82,000	Local residents' ballot Autumn Rugby Post
MARCH				
Sun 10	RBS 6 Nations ENGLAND v ITALY	3.00pm (finish 4.30pm)	82,000	BUY TICKETS

NB. Events subject to change/others may be added. TBC: To Be Confirmed. Stadium gates open approximately 4 hours before KO. For latest information www.rfu.com/TwickenhamStadium RFU Ticket Office: 0871 222 2017 / tickets@rfu.com / www.rfu.com

[BUY TICKETS](#) Tickets when available: www.rfu.com/tickets and www.ticketmaster.co.uk or 0844 847 2492

England photo: GettyImages



ENGLAND MATCHES & CONCERT TICKETS FOR LOCAL RESIDENTS

The Rugby Football Union (RFU) is a membership organisation and gives priority of application for international match tickets to its member clubs, schools and constituent bodies. Although demand from members is greater than tickets available for most England matches, an allocation is always available by ballot for residents local to Twickenham Stadium.

RFU Local Residents' England International Tickets Ballot

The ballot covers major England matches only. Successful applicants can purchase a pair of tickets which are not normally available for public sale.

There are 200 pairs of tickets available for each major England match which can be purchased by residents living in post codes TW1, TW2, TW3 2 and TW7 7. An application form is printed in Rugby Post before the matches.

Rugby Post is delivered three or four times a year to TW1, TW2, TW3 2 and TW7 7. Copies are also available from Rugby House on Whitton Road, The Rugby Store in York Street Twickenham, Twickenham and Whitton libraries while stocks last.

Rugby Post is also available on-line at www.rfu.com/rugbypost.

For most other matches, tickets are available for purchase from the RFU Ticket Office at the stadium or from www.ticketmaster.co.uk - 0844 847 2492

RFU Local Residents' Tickets Ballot for Concerts

The RFU reserves 1,100 tickets for local residents for every concert at Twickenham Stadium. Residents living in TW1, TW2, TW3 2 and TW7 7 can apply to a ballot to purchase a pair of tickets at a 15% discount. Prior to every concert an application form is printed in Rugby Post. www.rfu.com/rugbypost

For the latest information on Twickenham Stadium events - www.twickenhamstadium.com



IN THIS ISSUE



MUSIC DAY RAISES £11,000 FOR STRAWBERRY HILL HOUSE



NEW RIVERSIDE GARDENS FOR TWICKENHAM TOWN CENTRE



110,000 FANS FLOCK TO TWICKENHAM FOR LADY GAGA



NEW EVENT DAY TRAFFIC MANAGEMENT



JOB OPPORTUNITIES AT TWICKENHAM STADIUM

LOCAL RESIDENTS' TICKETS BALLOT FOR ENGLAND INTERNATIONALS PAGE 13

SUPPORTING OUR COMMUNITY

Annual sponsorship and financial commitments

- Richmond upon Thames Council Match Day Street Cleaning
- Richmond upon Thames Council Match Day Traffic Management and Twickenham Event Zone
- Free Event Day Shuttle Buses
- 20 Local Schools in Twickenham, Whitton, Isleworth and Hounslow
- Richmond upon Thames Primary Schools' Sports Day
- Strawberry Hill Music & Fun Day
- Twickenham Town Business Assoc
- Twickenham Town Co-ordinator
- Richmond AID - Advice and Information on Disability
- Richmond Borough in Bloom flower baskets around Twickenham Station approach
- St Margarets Fair
- Crown Road Summer Fair
- St Margarets Christmas Fair
- Whitton Business Association
- Whitton Christmas Fun Day
- Whitton St George's Day
- Homelink Day Respite Care Centre Whitton
- Richmond Shakespeare Society
- Richmond Concert Society
- Twickenham Riverside Trust
- Twickenham Gardening Association
- Twickenham Operatic Society
- Ivybridge Estate Summer Fun Day
- Ivybridge Residents Christmas Party
- Whitton PHAB Club
- Whitton Senior Citizen's Restroom
- Isleworth Public Hall

Recent Community Support

- Twickenham Riverside Jubilee Festival
- St James' Church Twickenham
- Richmond May Fair Ball
- LBRuT's Richmond's Den
- Strawberry Hill Jubilee Jazz Festival
- Mayor of Richmond's Charities
- Strawberry Hill Golf Club

RFU Community Relations

If you would like information on RFU Community Relations or event day matters, contact Fraser Cullen, Community Relations Manager, RFU, 200 Whitton Road, Twickenham TW2 7BA. frascullen@rfu.com or 020 8831 6533

Latest event info:

www.rfu.com/TwickenhamStadium

Photos: www.leothephotographer.co.uk
Fraser Cullen, Getty Images.

LEGAL CHALLENGE DELAYS TWICKENHAM STATION DEVELOPMENT



The proposed redevelopment of Twickenham station has been delayed pending the outcome of a judicial review to challenge Richmond Council's decision to approve planning permission.

The legal challenge means the project is currently on hold and work cannot start until the decision to grant planning permission has been upheld.

John Robinson from Solum Regeneration, the partnership between Network Rail and Kier Property, said: "Planning permission was granted in December 2011 and work was scheduled to start in September 2012 but the legal challenge has meant the development cannot progress until the judicial review has concluded."

The planning application was for a residential development with shops and restaurants around a new plaza and improvements to facilities within the station. The proposed new station will be built on a podium over the main rail lines and the relocated ticket office will provide direct access to the platforms via

steps and lifts.

Pending the outcome of the judicial review, more information will be made available regarding the development, timescales and potential impacts on passengers.

Tim Shoveller, managing director of the Network Rail and South West Trains alliance which operates the station and the railway through Twickenham, added: "It's difficult to comment on the proposals while the judicial review is ongoing but, if the development goes ahead as planned, everything will be done to keep disruption to a minimum."

"On the small number of weekends when trains are unable to call at the station, buses will be provided to ensure passengers can continue to travel. We will also use these opportunities to carry out other improvements works to the railway. Once the judicial review is resolved we will finalise our plans and ensure that any closures are publicised as early as possible."

For more information on the proposals for Twickenham station visit www.twickenhamforward.co.uk.

RUGBY POST AVAILABLE FROM THE RUGBY STORE AND AT WWW.RFU.COM

The RFU's community magazine Rugby Post is distributed to over 30,000 homes and businesses local to Twickenham Stadium.

The magazine is published three or four times a year and contains information on RFU community relations, stadium events, event day information and the local residents' ticket ballots. If you do not receive it regularly, copies are available from Rugby House, the RFU Rugby Stores and Twickenham and Whitton libraries. Online at www.rfu.com/rugbypost



RFU SUPPORTING OUR LOCAL COMMUNITY

SPECIAL GARDENS AT TWICKENHAM RIVERSIDE OPENED BY ROYAL APPROVAL



Princess Alexandra officially opened The Diamond Jubilee Gardens at Twickenham Riverside during a weekend of celebrations to mark the landmark regeneration achievement.

Princess Alexandra visited the new gardens on Saturday 23rd June. She was escorted around the gardens by Lord True and met many of the people who have been instrumental in making this a public garden for the people of Twickenham.

The gardens, located in a prime spot overlooking the Thames, was opened to the public on Sunday 24th June, following six

months of intensive work by Richmond Council to transform the former Twickenham pool site, after 30 years of neglect.

On Sunday hundreds of residents visited the new public arena and enjoyed an action packed day of events supported by the RFU and the Twickenham Riverside Trust. Bands performed live and families enjoyed numerous activities.

Lord True, Leader of Richmond Council, said,

"The Diamond Jubilee Gardens look absolutely superb and will be a fantastic asset for everyone to enjoy for many years to come.

We promised in 2010 to do everything necessary to open the riverside for the people of Twickenham. We have now delivered on that promise.

The gardens are a credit to the local people who have fought for this for many years. It reflects just what can be achieved by listening and working with residents in a spirit of co-operation and compromise. There is much more to do in our programme for Twickenham revival. I hope all people will work together to help make that possible."



IT'S TIME FOR TWICKENHAM

The new business association for Twickenham Town is finally here!

The Twickenham Town Business Association (TTBA) intends to:

- Help improve shopping, business and leisure for residents and visitors
- Enhance the working and business environment for all businesses and their employees
- Actively help develop Twickenham as a first choice tourist and leisure destination

Setting up a new website for the town, www.twickenhamthetown.org.uk was the first job. They hope this will become a

site of first reference for businesses and residents for activities, events and local information. Please take a look and if you have any local activities that you want to promote on the website get in touch.

The second job has been to recruit a Town Co-ordinator. They are grateful to the RFU and Richmond Council who have kindly sponsored the post. Con O'Brien started in July and is based in the offices of Crusader Travel two days a week. Con would like to thank Bruce Lyons the Chairman of TTBA for providing this space free of charge.

So far this year TTBA has already been working with Twickenham Alive

who organise local events and festivals e.g Twickenham Riverside Festival, Strawberry Hill Music and Fun Day and the pop up cinema. They are keen to work with local groups to help promote their events, or connect them to local partners. They are already planning next year's Twickenham Festival.

Con said, "The next big thing for Twickenham is the Christmas festivities. The date has been set as Friday 30th November, please save the date in your diaries. We will be working with Harlequins, our local rugby club, on this as we want to celebrate their success as premiership champions in 2012. Indeed we look forward making the Christmas celebrations the most successful yet."

If you want to get involved in any of these activities or your business would like to become a member of the TTBA please contact Con O'Brien on 0785 401 3864 - cornelius@ttba.org.uk



JIGSAW CARE SERVICES CROWNED WINNERS OF RICHMOND'S DEN



The hunt for the borough's next social entrepreneurs is over. At Richmond's Den Grand Final, supported by the RFU, a local social care group were crowned the overall winners.

Following a tense final, Lorraine Clements and Lucy Patterson, of Jigsaw Care Services Plus, were successful against two other candidates for the £10,000 prize package.

The finalists pitched their business proposals to a distinguished panel, Sir Trevor McDonald, John Bird, founder of the Big Issue and Anthony Thomson, Chairman of Metro Bank.

Winners Lucy Patterson and Lorraine Clements of Jigsaw Care Services Plus, said: "We have a background in the care sector and spotted a gap in the market for providing flexible and niche quality care. Winning Richmond's Den will give us recognition and the money and mentoring will be invaluable in helping us grow the business."

Lorraine and Lucy set up a professional social care business

to support families of children and young adults in Hampton and Richmond a year ago. They were presented with a cheque for £10,000 by Richmond MP Zac Goldsmith.

Speaking after the final, at The American International University, on Richmond Hill, Cllr Pamela Fleming, Richmond Council's Cabinet Member for Community, Business and Culture, said: "Richmond's Den really has brought out the best of the borough's entrepreneurial spirit. Social entrepreneurs are so important, particularly at the moment. Everyone who entered has been an absolute inspiration."

The runners up were Isabel Elder of Twickenham, who pitched a Local Divorce Support Service. Also Nicola Cornwall and Katherine Coltart, who were looking to help develop their start-up business, Dollies and Dinosaurs, which recycles as-good-as-new children clothes. They will receive prize packages worth £1,000 and all 95 who entered the competition will be invited to a networking event later in the year.

RICHMOND SHAKESPEARE SOCIETY'S ROMEO & JULIET Open Air Show in the Fountain Gardens, Twickenham

The Richmond Shakespeare Society is a highly-respected amateur dramatic society based at the Mary Wallace Theatre in Twickenham.

Founded in 1934 to perform Shakespeare's plays annually in the open air, they have grown to have a programme of eight productions a year by vastly differing playwrights of all eras.

This year's open air show was Romeo and Juliet, Shakespeare's tale of passionate love across the divide of feuding families, with its inter-generational conflicts and painful twists of fate. Set this in the enchanting fountain gardens of York House on Twickenham riverside and sponsored by the RFU. Another fabulous week long show, in a picnic in the park style, the perfect summer evening's entertainment.

Look out for next year's not to be missed production at www.richmondshakespeare.org.uk



110,000 FLOCK TO TWICKENHAM STADIUM FOR LADY GAGA CONCERTS

Over two nights, Saturday 8th and Sunday 9th September, 110,000 Lady Gaga fans came to enjoy one of the world's biggest music acts at Twickenham.

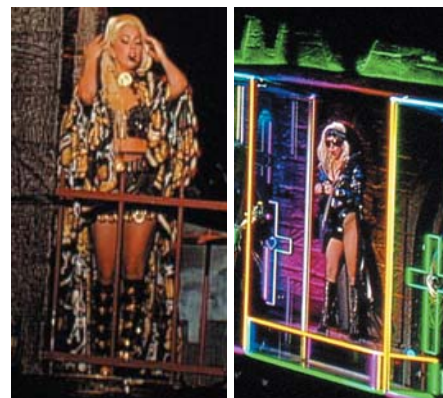
Many believe that no one comes close to touching Lady Gaga as a performer right now and this was demonstrated by her stunning theatrical shows at Twickenham. She's a dominant force in the world of rock and pop.

The Born This Way Ball highlights her talent and passion as a singer, musician, actress, dancer, activist and pop culture phenomenon.

Around 4,000 local residents were able to buy tickets to the concerts thanks to the RFU's community discounted tickets ballot. They were joined by thousands of other residents from Richmond and Hounslow boroughs.

Since 2003, Twickenham Stadium has hosted 18 concerts and they have

been attended by some 20,000 local residents successful through the RFU's residents' discounted tickets ballot.



A GOOD TURNOUT FOR ST MARGARETS FAIR

This year's St Margarets Fair on Saturday 14th July, supported by the RFU, once again turned out to be a popular fun day for all the community despite the poor weather this summer.

The fair on Moor Mead recreation ground had a non-stop programme of live bands and recorded music, and the usual array of charity stalls, crafts, children's entertainment, five a side

football, fun Olympics, taster tennis, beer tent and refreshments.

Although with a wet start, it was mostly dry afternoon and there was a good turnout for the event. Well done to all the fair organizers, school volunteers, stall holders and visitors.

Profits from the fair benefit the four St Margaret's schools and selected charities. However, the main objective is to continue to provide an enjoyable community day every July for the whole population of St Margaret's and Twickenham.



FESTIVAL TIME IN TWICKENHAM

Twickenham Riverside Jubilee Festival June 2012

SPONSORED BY THE RFU AND ORGANISED BY TWICKENHAMALIVE

Twickenham Riverside Jubilee Festival organised by Twickenhamalive, in association with the new Twickenham Town Business Association and the RFU, provided Twickenham with three weekends of fun packed entertainment on the riverside.

The Festival, which was inspired by the success of the Twickenham Riverside Regatta in September 2011, included three days of river based activities, live music, kids rides and craft stalls. Church Street hosted a Jubilee Street Party, Craft Market and Italian Market, while St Mary's Church will be had their annual Fayre. There were many open days including Turner's House, Pope's Grotto, the Mary Wallace Theatre, Richmond Yacht Club, Twickenham Yacht Club and Twickenham Rowing Club.

The Twickenham Riverside Jubilee Festival started with the traditional tug of war outside the Barmy Arms and the popular morris dancers made their customary appearance. Twickenhamalive aims to bring new events to next year's festival and will be working to make another exciting event to take place in Twickenham.

None of this could happen without local sponsors, the Rugby Football Union, Stone Rowe Brewer and Tenant Finder, and partners Richmond Council, the Twickenham Rowing Club, Active 360 and Monkeypuzzle.



For information on next year's festival www.twickenhamalive.com

TWICKENHAM ALIVE SPONSORED BY THE RUGBY FOOTBALL UNION

Join us for Christmas at Twickenham Stadium

PRIVATE PARTIES £55 + VAT PER PERSON

We can accommodate private parties of 100-800 for dinner, drinks and dancing.

JOINER PARTY £50 + VAT PER PERSON

Come and join our traditional Christmas Joiner Party Night at Twickenham Stadium on Saturday 15 December 2012.

BASIC PACKAGE INCLUDES:

- 3 course traditional Christmas dinner
- Half bottle of house red or white wine per person
- Tea and coffee
- Crackers, tea lights, black cloths
- Christmas trees in your room
- DJ until late (1am) – bar closes at 12.30am

For more details or to book a table call us on **020 8744 9997** email conferences&events@therfu.com

NEW EVENT DAY TRAFFIC MANAGEMENT FOR TWICKENHAM STADIUM EVENTS

The RFU, working in partnership with the Police and Local Authority, has reviewed and made significant changes to the way the traffic management operation is run on event days.

Some traffic management roles historically undertaken by the Police will be done by a CSP, a professional traffic management company. CSP are part of the Community Safety Accreditation Scheme (CSAS).

Through CSAS, designated staff from CSP have been accredited with the following police powers:

1. Power to require name and address for road traffic offences
2. Power to control traffic for purposes other than escorting a load of exceptional dimensions

Failure to comply with the directions given by an accredited person may result in prosecution.

The police will maintain their core responsibility of:

- (a) Prevention and detection of crime.
- (b) Preventing or stopping breaches of the peace.
- (c) Activation of a contingency plan where there is an immediate threat to life and co-ordination of resultant emergency service activities.

In order to support the safe transition of traffic management from the Police to the RFU as event organiser, the Police will retain responsibility for the effective management of the A316 and pedestrian movement outside of Twickenham Station.

The Community can be reassured that on event days, the decision-making in respect of traffic management and road closures will be undertaken by traffic management professionals, CSP, in consultation with the Police. This will allow the police to focus more fully on any possible crime, disorder and behaviour through their Town Centre RFU Event Policing Plan.

Richard Knight, RFU Stadium Director said, "In line with national policing policy the responsibility for traffic



management now lies with the event organiser. As a result, the RFU has recruited the professional traffic management company, CSP, to provide this service, albeit still assisted by the Metropolitan Police. This arrangement is approved by the Police and Richmond Council and will benefit the community as it allows the police to free up officers for other police duties across the borough."

CSP has a background in traffic management of large events, so on event days, the community should see traffic surrounding Twickenham Stadium managed effectively and also see the police officers who were previously tasked with this duty freed up to work elsewhere.

Dave Butler, Chairman of CSP, said, "CSP is extremely proud to be responsible for the external traffic management for events at Twickenham Stadium. We realise the importance of the role to the local boroughs and Twickenham Stadium.

With our existing experience of external traffic management for Wembley Stadium, Kew Gardens, Tottenham Hotspur FC, Chelsea FC, Kempton Park Racecourse and the London 2012 Olympic Games, together with our knowledge of Twickenham's event day traffic plan, we are confident in delivering a safe and efficient operation for both residents and visitors to the area."

RFU MUSIC & FUN DAY RAISES

An estimated 10,000 people attended the annual Strawberry Hill Music & Fun Day organised by the Rugby Football Union on a glorious sunny day in July.

As well as providing the community with a fun day out in the delightful gardens of Strawberry Hill House, the event raised £11,000 towards the restoration of the 18th century house.

Horace Walpole's little gothic castle of Strawberry Hill in Twickenham is the most important and influential of the early gothic revival of the 18th century. The renovation of the house is almost complete. For tours of this wonderful house see www.strawberryhillhouse.org.uk

Throughout the day the large crowd enjoyed live music, an array of craft and food stalls and lots of children's activities. The bands many with local connections, included the hugely popular Skalectrix, The Mustangs, Nark Drool & The Shudders, The Blue Meanies, Marner Brown, The Wild Archive and Friday Mistress.

Thanks to event supporters Kevin@cleanacoverltd.co.uk, for bars and stage, Carl at www.ctspro.co.uk for PA, Teresa and Berkley of Twickehamalive and Veolia environment services.



£11,000 FOR STRAWBERRY HILL



JOB OPPORTUNITIES FOR LOCAL RESIDENTS

JOIN THE TWICKENHAM TEAM

Our casual retail staff help make every event a success

Twickenham Stadium's South Stand includes a flagship retail store, which relies on the best casual retail staff to represent the England Rugby brand, and on match days in other stadium outlets.

If you would like to join our Rugby Store team you'll need to be a good communicator and enjoy helping customers.

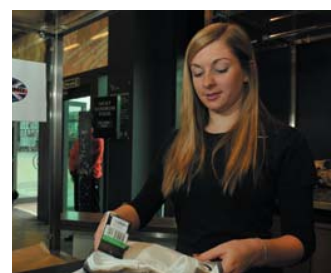
You will need to commit to the majority of 20 events per year, which take place mostly at weekends. You will be required to work 8 hours per day with a variety of shifts between 8:00am and 12:00pm. The rate of pay is approximately £8.00 per hour and benefits include staff uniform and 25% discount on retail merchandise. Full training will be given to successful candidates.

If you would enjoy working in a fast-paced, customer friendly role, selling a wide range of merchandise within the Rugby Stores spread throughout the stadium, then please apply.

Applications should be made using a 'casual or voluntary work' RFU Application Form, obtained by downloading from the Careers and Vacancies section of our website www.rfu.com or by e-mailing recruitment@therfu.com.

Please submit completed applications to: Sally Betts, Human Resources department, Rugby Football Union, Rugby House, Twickenham Stadium, 200 Whitton Road, Twickenham, TW2 7BA or email it to recruitment@therfu.com

For further information Jane Cowell on (020) 8831 7445. Closing date for applications Friday September 28th.



CASUAL EVENT DAY STEWARDS REQUIRED



Twickenham Stadium is the Home of England Rugby and the RFU. The stadium has a capacity of 82,000 and includes a Marriott hotel, a Virgin Active leisure club, a rugby store, conference and banqueting facilities and offices.

We are looking for local people to fill our expanding need for stewards. We pride ourselves on our close ties with the local community. We would like to recruit more local paid casual staff for our event day stewarding team.

SECURITY STEWARDS (Job ref: SS001)

- Providing a friendly and proactive service to all guests

- Performing access control, crowd and queue management, bag checking and directional attendant duties
- Maintaining a safe environment for all guests and staff

SIA LICENCED DOOR SUPERVISORS (Job ref: DS001)

- Managing capacities and behaviour through proactive observation of, and interaction with, event guests
- Assisting with queue management and ensuring good order
- Ensuring effective close down of areas at specified time

Candidates must have good customer service skills, an ability to communicate effectively with staff, guests, VIPs, and commercial visitors and have personal confidence and stamina.

You will need to commit to the majority of 20 events per year, usually at weekends. You will be required to work between 8 to 12 hours per day with a variety of shifts between 6:00am and 12:00pm. Benefits include staff uniform, equipment, food and refreshments. Full training for successful candidates.

Applications should be made using the RFU 'casual or voluntary work' application form, which can be downloaded from "how to apply" at the Careers and Vacancies section of www.rfu.com or recruitment@therfu.com by e-mail. Please quote the job reference code and enclose a copy of your CV and covering letter.

If your application is successful you will be invited to the next available interview and selection day. Please submit completed applications to: Human Resources, RFU, Rugby House, 200 Whitton Road, Twickenham TW2 7BA or to recruitment@therfu.com Closing date Monday 1st October.

BE PART OF THE TWICKENHAM EXPERIENCE



Twickenham Stadium and its official hospitality provider Twickenham Experience Ltd aim to provide the best sporting event experience in the UK. The drama and passion of international rugby, the finest food and drink, and the friendly personal service combine to create a world-class venue at the heart of the local community.

Many who work to make Twickenham Stadium events such a success live in the area. With a team of over 2,500 staff needed on an international match day, Twickenham Experience are now recruiting casual staff for the coming season. **We want to offer this opportunity first and foremost to our neighbours.**



Roles Available:

Hospitality Waiter/ess
Retail Bar Staff
Kitchen Porters
Hospitality Managers*
Retail Managers*
Chefs*



Personal qualities:

Experience is highly beneficial although not essential. Your professional approach to work and a can-do attitude is what counts.

What we offer:

- Unrivalled event experience in a world-class sporting environment, right on your doorstep
- Competitive rates of pay
- Flexible working - The work is of a casual nature and can therefore fit in around other work, parenting and study commitments.
- Complimentary staff meals
- Full induction
- Uniform is provided
- Training

How to apply:

For further information and to apply please visit:
www.compasseventjobs.com/twickenham

All applicants will be required to attend an interview and induction training day and personal references will be sought. Applicants will be asked to produce documents that prove their right to work in the UK.

RFU supporting our local community.

* Experience required for these roles which must be validated by references



IMAGINE HAVING THE KEYS TO TWICKENHAM STADIUM

Volunteer Tour Guides at the Home of England Rugby

For a chosen few access behind the scenes comes with a chance to mug up on the history and fascinating facts of England Rugby's national stadium and, even better, the opportunity to pass that knowledge on to fans of every age and from every nation.

The World Rugby Museum which welcomes over 25,000 visitors a year on their Stadium Tours, has a few vacancies for volunteer Tour Guides to join their enthusiastic team. Tour

Guides come from all walks of life and bring a wealth of knowledge and experience along with them.

The part-time voluntary position comes with travel expenses and, although knowledge of rugby union is an advantage it is not essential as training is provided.

Being a Tour Guide gives the opportunity to make new friends and to wax lyrical about this historic sporting venue.

If you think you would enjoy the role, please email museum@rfu.com or telephone Lindsay Simmons, Tours Manager on 0208 892 8877 for more information.

RFU EDUCATION PARTNERSHIP

SUPPORTING LOCAL SCHOOLS

The aim of the RFU's Education Partnership is to provide real benefits for 20 schools in our local community.

Each school receives an annual financial grant for sports and leisure and an invitation to visit The World Rugby Museum & Stadium Tour free of charge.

The RFU also sponsors Richmond upon Thames Primary Schools' Borough Sports Day.

PARTNERSHIP SCHOOLS

TWICKENHAM

Archdeacon Cambridge's CE School
Orleans Infant School
St James's RC Primary School
St Mary's CE School
St Stephen's CE Junior School
Trafalgar Infant School
Trafalgar Junior School
Orleans Park School
Waldegrave School for Girls

WHITTON

Bishop Perrin CE School
Chase Bridge School
Heathfield Junior School
Nelson School
St Edmunds RC School
Twickenham Academy

HOUNSLOW

The Heathland School

ISLEWORTH

Ivybridge Primary School
Worple Primary School
Isleworth Blue CE School
Gumley House Convent School

NEW MOBILE APP FOR LOCAL COMMUNITIES LAUNCHES ACROSS THE BOROUGH

There's a new Mobile App for the local community.

Big Local App Richmond upon Thames is a free download for smart phones and contains a wealth of information about the borough and its communities. The new app highlights local events and news for residents and visitors with content changing daily. Big Local App provides a useful source of local information in your pocket.

The app promotes the borough and its towns and villages. Users will find information from Richmond Council, the borough's local communities, theatre and cinema listings, hotels and restaurants, and a directory that will include every local business and retailer, many of whom will have their own mobile mini-app inside the Big Local App.

The RFU is among the first organisations based locally to have its own mini-app, providing information about the RFU and forthcoming events, as well as the World Rugby Museum, Stadium Tours and the on-line version of Rugby Post.

Chairman of Twickenham Town Business Association, Bruce Lyons, who runs Destination Richmond & Twickenham from Crusader Travel in Church Street, is another early contributor. Bruce sees the app as an



important tool for promoting the borough as a great place to visit and stay.

Twickenham Town Co-ordinator Con O'Brien is also supporting the Big Local App. Con said, "The app fills a gap in the market by showcasing local businesses."

The Big Local App will highlight some of the borough's hidden gems and feature a "What's On" section where organisations can list events for free.

Big Local App Richmond upon Thames is available as a free download for iPhone and Android. To download the app to your smart phone, or get listed as a local business for free, e-mail Nick Turner at richmond@biglocalapp.com or visit www.biglocalapp.com/richmond



Con and Bruce meet Bla the alien, Big Local App's mascot, on a visit to Church Street

JOIN THE FRONT ROW – RUGBY WORLD CUP 2015



The buzz generated by the Olympics and Paralympics is still reverberating around London, but soon all eyes will be on the next big thing to hit English shores - Rugby World Cup 2015.

Twickenham is set to host the Final on October 31, 2015 - becoming only the second stadium to present the sport's showpiece event on two occasions - and packed houses across the

country will provide a thumping heartbeat to the action as the world's finest teams do battle for the Webb Ellis Cup.

Preparations are already underway and with just three years to go until kick-off, you can stay up-to-date with the latest developments - from stadium and ticket information to volunteering opportunities - by joining the Front Row, the official Rugby World Cup 2015 e-newsletter, at www.rugbyworldcup.com/signup



LOCAL RESIDENTS' TICKET BALLOTS

TO BUY TICKETS FOR QBE INTERNATIONALS

For each major England match, 200 pairs of tickets are available to residents living in postcodes TW1, TW2, TW3 2 and TW7 7.

To enter for the chance to buy a pair of tickets complete the form opposite. Choose only **ONE** of the matches listed opposite and tick the box. **Send the application form** to Fraser Cullen, RFU Ballots, Rugby House, Whitton Road, Twickenham TW2 7BA. **Closing date is Friday 19th October 2012.** Only one QBE Internationals application per address. Tickets £65 & £56 each. Payment by card is subject to 5% transaction fee.

The RFU may use your personal data to send you occasional information by post from the RFU, its subsidiaries or associated companies about tickets or special offers to events at Twickenham Stadium.

Please tick ONE match only

England v Australia Sat 17 November '12 ☐
England v South Africa Sat 24 November '12 ☐
England v New Zealand Sat 1 December '12 ☐

PLEASE WRITE CLEARLY

Name _____

Address _____

Postcode _____ Tel _____

email _____

Only applications on this form or copy of it are valid.

Successful applicants will be notified by 1st-9th Nov.



**ENGLAND
RUGBY**

If you do not want to receive by electronic mail any information about tickets or special offers from the RFU, its subsidiaries, or associated companies please tick here ☐



TO BUY TICKETS FOR RBS 6 NATIONS MATCHES

For each major England match, 200 pairs of tickets are available to residents living in postcodes TW1, TW2, TW3 2 and TW7 7.

To enter for the chance to buy a pair of tickets complete the form opposite. Choose only **ONE** of the matches listed opposite and tick the box. **Send the application form** to Fraser Cullen, RFU Ballots, Rugby House, Whitton Road, Twickenham TW2 7BA. **Closing date is Friday 23rd November 2012.** Only one 6 Nations application per address. Tickets £70 & £60 each. Payment by card is subject to 5% transaction fee.

The RFU may use your personal data to send you occasional information by post from the RFU, its subsidiaries or associated companies about tickets or special offers to events at Twickenham Stadium.

Please tick ONE match only

England v Scotland Saturday 2 February 2013 ☐
England v France Saturday 23 February 2013 ☐

PLEASE WRITE CLEARLY

Name _____

Address _____

Postcode _____ Tel _____

email _____

Only applications on this form or copy of it are valid.

Successful applicants will be notified by 10th December.



**ENGLAND
RUGBY**

If you do not want to receive by electronic mail any information about tickets or special offers from the RFU, its subsidiaries, or associated companies please tick here ☐



A NEW PITCH FOR TWICKENHAM

The ghost of Billy Williams, who persuaded the RFU to buy the Twickenham cabbage patch for five and a half thousand pounds in 1907, must have watched in wonder recently.

The original pitch foundation and drainage system installed back then because of the River Crane's proximity was finally removed. A mountain of soil appeared in the North Car Park and contractors spent more than two months creating the most effective hallowed turf befitting the world's largest rugby stadium and the host of the next Rugby World Cup.

Rugby World Cup 2015 will see games played at Twickenham over six weeks and now the pitch is likely to play as well for the final as for the opener.



The old pitch consisted of four inches of fibre sand with five metre drains laid on the original cabbage patch. It served the game remarkably well but was ageing and the drainage slowing, sometimes leaving standing rainwater. Now, whereas the old drainage allowed 20/25mm of water to drain away in an hour, the new one copes with between 150mm and 250mm.

The Desso Grassmaster system used in the new pitch was invented by the



Dutch but the actual design and implementation owed its success to Lancashire, with a bit of Cheshire and Middlesex literally thrown in.

The RFU used Professional Sports Design Ltd, a specialist company based in Preston, to design the new pitch. They have revolutionised pitches for the likes of Manchester City, West Bromwich Albion, Everton and Wembley. The actual installation was the work of John Mallinson from Ormskirk, Lancashire, whose major stadium pitches include Villa Park and Wembley.

Over 14 weeks of work the pitch was lifted and shifted, all 9,000 tonnes of it. Irrigation was installed and drainage laid before a stone layer from a local quarry was put on top. Then sand was spread before 20 miles or 32 km of under soil heating pipes were laid on top. Next came six tonnes of nutrients and a sand and soil mix before 300kg of five varieties of rye grass, the strongest, hardest wearing grass grown in England, was sown with a spiked multi-seeder and given six weeks to grow while being watered, lightly rolled and cut.

Finally, the Desso Grassmaster piece de resistance was sewn into the pitch.

No less than 30,000 miles, or 48,000 km, of artificial grass strands, enough to encircle the world and tie a large bow, was inserted for the rye grass to grow around and give stability.

The pitch was completed and resplendent on August 30th, ready for its first game – the London Double Header on September 1st.

Twickenham Pitch Facts & Figures

- Old Pitch Removed June 11th - New Pitch Complete August 30th
- Pitch Removal - requiring 450mm (18") 9,000 tonnes to be shifted
- Irrigation - put in at 700mm (28") below the surface
- Drainage - laid at 600mm (24") and 6m apart
- Stone Layer - laid at 150mm (6"), spread to drain at 10,000mm (33') per hour
- Lower Root - Sand spread at 200mm (8") to drain at 900mm (36") per hour
- Under Soil Heating – 20 miles of pipe laid on top of stone layer (12" below the turf)
- Nutrients – 6 tons Zeolite for slow release as plants require
- Top Root – 90% sand/10% soil mix 100mm (4") under seeding
- Seed Sown – at 200mm in the lower root sand with 300kg rye grass seed spiked into pitch with multi-seeder
- Grass given six weeks growth, watered, lightly rolled and cut at 40mm height
- Desso Grassmaster artificial grass strands sewn into pitch at 8" deep, roots grow round giving stability, 20mm apart and 20million strands (48,000 km – would encircle the earth)

CINEMA COMES ALIVE

Open Air Pop-Up Cinema

'THE COMMITMENTS'

at Twickenham Riverside
Diamond Jubilee Gardens

SATURDAY 29 SEPT

Open at 6pm – food & drink
Film starts at 8pm

Tickets £13 – details at
www.twickenhamalive.com
or www.wearcinema.co.uk

This award winning comedy set in Dublin will bring the sound of soul music to Twickenham Riverside



www.twickenhamalive.com
for entry to community film festival



EVENT DAY CONTROLLED PARKING ZONE



Signs around the stadium show details of when event day parking controls are next in operation

The Event Day Controlled Parking Zone (Zone R) is operated by the London Boroughs of Richmond upon Thames and Hounslow.

The aim of Zone R is to provide parking for local residents and their visitors and to deter stadium visitors from parking in local roads.

How Zone R works

The date of each event and the hours of operation are displayed on signs at entry points to Zone R which includes the HM and C Zones.

Outside the hours of operation, there is no restriction on parking in marked bays or on yellow lines, unless indicated by time plates. However, this does not apply to the HM and C Zones where restrictions apply.

Residents within Zone R must display their Residents' Permits on event days. The permits are FREE and valid in any residents' bay within Zone R when operational on event days.

Permits are issued by post and application forms can be obtained by Richmond Borough residents from 020 8744 2131 between 9.00am and 5.00pm Monday to Saturday. Hounslow Borough residents can call 020 8583 6666 between 8.45am and 4.15pm Monday to Friday.

Visitors' permits are also available free of charge. For further information please call the telephone numbers listed above.

Blue disabled badge holders can park free in residents' bays and for up to three hours on single yellow lines, providing there are no restrictions.

Event day parking information:
www.richmond.gov.uk/parking
www.hounslow.gov.uk

PARKING ZONE SCHEDULE 2012

Hours of operation 10am- 6pm or as advised on Event Day signs in roads close to the stadium.

Saturday 10 November
Saturday 17 November
Saturday 24 November
Saturday 1 December
Saturday 29 December
Saturday 2 February
Saturday 23 February
Sunday 10 March
Saturday 27 April
Saturday 11 May TBC
Sunday 12 May TBC
Saturday 25 May
Sunday 26 May

The Boroughs of Richmond upon Thames and Hounslow are responsible for the implementation and enforcement of the Event Day Controlled Parking Zone.

Event Day Parking Helplines
Richmond Council 020 8744 0462
Hounslow Council 07852 310713

EVENT DAY TEMPORARY ROAD CLOSURES



**TEMPORARY ROAD CLOSURES LINE
ON EVENT DAYS PHONE 020 8831 6604
OR www.twitter.com/lbrut**

In the interests of public safety, the police can authorise road closures before and after events.

The roads that can be affected are **Rugby Road, Whetton Road, London Road** and to support traffic dispersal after major events, access to the A316 from Hospital Bridge Road.

As a guide, road closures will be implemented for events attended by more than 25,000 or at the discretion of police should public safety become an issue. Normally the closures will be from half an hour, up to two hours for capacity events.

Twickenham Police have an event day information line on 020 8831 6604. This has a recorded message about road closures on the event day. At other times call 020 8247 7193. Information on the day also available at www.twitter.com/lbrut

Egerton Road barrier is open during road closures.

RFU EVENT DAY SHUTTLE BUS SERVICE

To encourage supporters to use public transport, the RFU provides up to 33 double deck buses running between the stadium and Richmond before and after matches and concerts.

The service operates from the A316 near Old Deer Car Park and close to Richmond Station for three hours prior to kick off. There is a charge of 50p.

For two hours after matches buses to Richmond/Hounslow East stations are free.





TWICKENHAM
STADIUM

EVENTS TO MAY 2013

2012		Kick Off / Start Time	Est. Att.	Tickets
NOVEMBER				
Sat 10	QBE International ENGLAND v FIJI	2.30pm (finish 4.00pm)	75,000	BUY TICKETS
Sat 17	QBE International ENGLAND v AUSTRALIA	2.30pm (finish 4.00pm)	82,000	Local residents' ballot in this issue
Sat 24	QBE International ENGLAND v SOUTH AFRICA	2.30pm (finish 4.00pm)	82,000	Local residents' ballot in this issue
DECEMBER				
Sat 1	QBE International ENGLAND v NEW ZEALAND England Women v New Zealand Black Ferns	2.30pm (finish 4.00pm) 5.00pm (Free entry from 4.30pm)	82,000	Local residents' ballot in this issue
Thurs 6	The Varsity Match Oxford University v Cambridge University	2.00pm (finish 3.30pm)	25,000	BUY TICKETS
Sat 29	Aviva Premiership Rugby Big Game 5 Harlequins v London Irish	TBC	80,000	BUY TICKETS
2013				
FEBRUARY				
Sat 2	RBS 6 Nations ENGLAND v SCOTLAND	4.00pm (finish 5.30pm)	82,000	Local residents' ballot in this issue
Sat 23	RBS 6 Nations ENGLAND v FRANCE England Women v France Women	5.00pm (finish 6.30pm) 7.20pm (Free entry from 7.00pm)	82,000	Local residents' ballot in this issue
MARCH				
Sun 10	RBS 6 Nations ENGLAND v ITALY	3.00pm (finish 4.30pm)	82,000	BUY TICKETS
Sat 23	Daily Mail RBS Schools' Day	from 11.00am	7,000	BUY TICKETS
Sun 24	British Universities' & College Finals Women's Final / Men's Final	from 11.00am	3,000	BUY TICKETS
APRIL				
Sat 27	Army v Navy for the Babcock Trophy Combined Services U23 v Oxbridge U23	3.00pm (finish 4.30pm) 12.00noon	60,000	BUY TICKETS
MAY				
Sat 4	RFU Cup Finals & National U20 Final	TBC	5,000	BUY TICKETS
Sat 11 & Sun 12	Marriott London Sevens	10.30am-7.30pm TBC 10.30am-7.30pm TBC	50,000 60,000	BUY TICKETS BUY TICKETS
Sat 25	Aviva Premiership Rugby Final	TBC	82,000	BUY TICKETS
Sun 26	ENGLAND v BARBARIANS Bill Beaumont Cup Final County Championship Shield Final	TBC	50,000	BUY TICKETS

NB. Events subject to change/others may be added. TBC: To Be Confirmed. Stadium gates open approximately 4 hours before KO.
For latest information www.rfu.com/TwickenhamStadium RFU Ticket Office: 0871 222 2017 / tickets@rfu.com / www.rfu.com

BUY TICKETS Tickets when available: www.rfu.com/tickets and www.ticketmaster.co.uk or 0844 847 2492 England photo: GettyImages



HIGH COURT APPROVAL FOR NEW TWICKENHAM STATION

A High Court judge has given the green light to Richmond Council's planning committee decision to redevelop Twickenham Station.

In December 2011, the council granted planning permission for a development by Solum (a partnership of station owners Network Rail and Kier Group plc) which had been scaled down from a previous proposal.

The development includes key improvements to the station, a new modern entrance and ticket hall, lifts to all platforms, new toilets, improved public transport interchange facilities, a café, a riverside walkway, a new public plaza with retail units and a development of flats above the scheme.

After consideration of the decision and other representations, the Greater London Authority and Secretary of State for Communities and Local Government announced that they had no objections.

A local campaign group, the Twickenham Residents Action Group (TRAG), opposed the Solum scheme since it was first put to local people for consultation almost three years

ago. Although the scheme received considerable support from local people, TRAG represented people opposed to it.

TRAG were disappointed when planning permission was granted and sought to challenge the decision accusing the Council of acting unlawfully. They were granted permission for a Judicial Review of the Council's decision and the parties presented their cases at court.

Solum plan to create a new improved station, new homes and an attractive, safe and welcoming gateway to Twickenham, which local people will be proud of.

At the High Court in December, the judge reviewed all the evidence and agreed with Richmond Council that the process followed was correct and the decision was lawful. TRAG's claims were dismissed, but it has resulted in the scheme being delayed.

The Rugby Football Union after consulting with all interested parties, including TRAG, supported the Solum scheme and the Council's decision to grant planning permission.

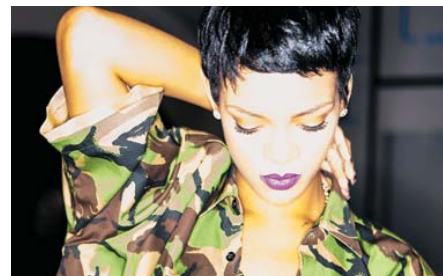
Despite the delay, working with Solum, the Council, transport authorities and local people, we are hopeful that most of the station improvements will be in place for the hundreds of thousands of visitors to our town for Rugby World Cup 2015.

Richmond Council will work with Solum to mitigate the impact of the building work on station neighbours and the travelling public.



The old Twickenham Station soon to be redeveloped after a lengthy delay

IN THIS ISSUE



RIHANNA IN CONCERT AT TWICKENHAM STADIUM



£5,500 FROM CHRISTMAS TREE SALES TO LOCAL CAUSES



TWICKENHAM STADIUM UPGRADE UNDERWAY



SUPPORTING FESTIVE FUN IN OUR LOCAL COMMUNITIES



RICHMOND BUSINESS EXPO AT TWICKENHAM STADIUM

RESIDENTS' BALLOT FOR DISCOUNTED TICKETS TO RIHANNA CONCERTS PAGE 3

SUPPORTING OUR COMMUNITY

Annual sponsorship and financial commitments

- Richmond upon Thames Council Match Day Street Cleaning
- Richmond upon Thames Council Match Day Traffic Management and Twickenham Event Zone
- Free Event Day Shuttle Buses
- 18 Local Schools in Twickenham, Whitton, Isleworth and Hounslow
- Richmond upon Thames Primary Schools' Sports Day
- Strawberry Hill Music & Fun Day
- Twickenham Town Business Assoc
- Twickenham Town Co-ordinator
- Richmond AID - Advice and Information on Disability
- Richmond Borough in Bloom flower baskets in Twickenham
- St Margarets Fair
- Crown Road Summer Fair
- St Margarets Christmas Fair
- Whitton Business Association
- Whitton Christmas Fun Day
- Whitton St George's Day
- Homelink Day Respite Care Centre Whitton
- Richmond Shakespeare Society
- Richmond Concert Society
- Twickenham Riverside Trust
- Twickenham Alive
- Twickenham Gardening Association
- Twickenham Operatic Society
- Ivybridge Estate Summer Fun Day
- Ivybridge Residents Christmas Party
- Whitton Senior Citizen's Restroom
- Isleworth Public Hall

Recent Community Support

- Artsrichmond Swan Awards
- All Hallows Church Twickenham
- East Twickenham Traders Assoc
- The Heathland School, Hounslow
- Shooting Star Children's Hospice
- Kew Community Trust
- Richmond Bridge Club
- Integrated Neurological Services
- The Jubilant Trust
- Mayor of Richmonds' Charities
- Stepping On Out
- SPEAR Richmond

RFU Community Relations

If you would like information on RFU Community Relations, event days or Rugby Post contact Fraser Cullen, RFU Community Relations Manager, frascullen@rfu.com or 020 8831 6533

Latest info: rfu.com/TwickenhamStadium

Photos: www.leothephotographer.co.uk
Fraser Cullen, Getty Images.

THE RFU & TWICKENHAM TOWN BUSINESS ASSOCIATION WORKING FOR TWICKENHAM



Riverside music at Twickenham Festival 2012



Opening of the Diamond Jubilee Gardens



Twickenham Alive Riverside Jubilee Festival



Christmas in Twickenham's Church Street

It's been a busy time for the Twickenham Town Business Association (TTBA) over the past six months, with the Twickenham Riverside Jubilee Festival, the Olympic cycling road races and time trials finishing off with a number of well attended and fun Christmas events.

During last autumn's rugby internationals extra efforts were made to welcome supporters by putting up flags of competing teams throughout the town. The TTBA created a great atmosphere for supporters who spend time and money in our town to benefit many local businesses.

A number of new businesses have set up in the town including, Rubens Bakehouse a fantastic new bakery on Heath Road, LuLu's a lovely café on London Road, Ales & Tails a restaurant and bar on York Street and Cook the great frozen food store. If you have not already visited them please pop in and show your support.

As well as support from local businesses, key sponsors are the RFU and Richmond Council, supported by St James, Nat West, Tesco, Burger King, South West Trains, Churchill Homes, Arthur's and the Barmy Arms. A special thanks to Twickenham Alive and the Twickenham Riverside Trust.

The TTBA website for Twickenham town is www.twickenhamthetown.org.uk You can keep up to date on what's happening in the town and Con O'Brien and Bruce Lyons would love to hear from you with any ideas you have to improve the town centre. The TTBA look forward to working for you in 2013.

RUGBY POST AVAILABLE FROM THE RUGBY STORE AND AT WWW.RFU.COM

The RFU's community magazine Rugby Post is distributed to over 30,000 homes and businesses local to Twickenham Stadium.

The magazine is published three or four times a year and contains information on RFU community relations, stadium events, event day information and the local residents' ticket ballots. If you do not receive it regularly, copies are available from Rugby House, the RFU Rugby Stores and Twickenham and Whitton libraries. Online at www.rfu.com/rugbypost



DISCOUNTED TICKETS FOR RIHANNA CONCERTS

RIHANNA DIAMONDS WORLD TOUR WITH SPECIAL GUEST DAVID GUETTA

**Twickenham Stadium
Saturday 15th & Sunday 16th June**

Worldwide superstar Rihanna is bringing her Diamonds World Tour to Twickenham.

The recipient of six Grammy Awards® and seven Billboard Music Awards, Rihanna has sold over 37 million albums and 146 million digital tracks worldwide, and currently holds the record as the top-selling digital artist of all time.

DISCOUNTED TICKETS FOR LOCAL RESIDENTS

The 18 concerts hosted at Twickenham Stadium since 2003 have seen 19,400 discounted tickets allocated to local residents.

Concerts are often sold out. However, the RFU retains 1,100 discounted tickets for every concert for local residents available by ballot in Rugby Post prior to any concert.

Concert ballots are available at rfu.com/rugbypost

RFU CONCERT LINE Operational on concert days only

If residents local to the stadium do have any concerns or issues about concerts or require information, please call the RFU concert line on 07764 569402. The helpline will operate from 1pm to 11.30pm on concert days only.



Previous concerts have included The Rolling Stones, U2, Eagles, Bon Jovi, Rod Stewart, The Police, REM, Genesis, Iron Maiden, Help for Heroes featuring Robbie Williams with Gary Barlow and Lady Gaga.

RIHANNA LOCAL RESIDENTS' TICKET BALLOT 2,200 DISCOUNTED TICKETS FOR SAT 15th & SUN 16th JUNE

The RFU has reserved 2,200 tickets available for purchase by local residents at a 15% discount.

If you live in postcodes TW1, TW2, TW3 2 and TW7 7, you are eligible to enter the ballot to buy two tickets.

Successful applicants can buy a pair of tickets.

The first 550 drawn will be able to purchase a pair of discounted tickets for **Saturday 15th June**.

The second 550 drawn will be able to purchase a pair of discounted tickets for **Sunday 16th June**.

Closing date is Monday 4th February 2013.

To enter, please fill out **ALL** the details requested and send the application form to:

Fraser Cullen, RFU Concerts Ballot, Rugby House,
200 Whitton Road, Twickenham TW2 7BA.

**Only successful applicants will be notified
by Monday 11th February.**

Note for successful applicants: For callers to the RFU Ticket Office, paying by cash, there is a £3 transaction fee. If you choose to pay for your two tickets by card a total transaction fee of £9.12 will apply. Details will be sent to successful applicants.

**If successful I would like to buy two discounted £45
upper tier seat tickets available at £38.25 each.**

PLEASE PRINT CLEARLY

Name _____

Address _____

Postcode _____

Tel (Required) _____

Email (Optional) _____

RFU DONATES £5,500 TO LOCAL CHARITIES AND ORGANISATIONS FROM CHRISTMAS TREE SALES



Manor Christmas Trees returned for the annual Christmas tree sales from the RFU's car park on the A316.

Last year the RFU donated £3,000 from the sales to the Richmond and Twickenham Times and Richmond Mayor's appeal for the restoration of the Radnor Gardens War Memorial.

This year the RFU will be donating £5,500 to support local charities and organisations including the Mayor of Richmond upon Thames Cllr Rita Palmer's charities. Others to benefit are:

HOMELINK

Homelink is a nurse led day respite care centre in Whitton for adults staffed by qualified nurses and trained volunteers.

STEPPING ON OUT

'Stepping on Out' is a small local charity which produces hand made greetings cards by adults with learning disabilities.

TWICKENHAM ALIVE

A social enterprise working primarily in Twickenham creating and organising community, entertainment and sporting events.

THE JUBILANT TRUST

Initiated by the Thames Traditional Rowing Association (TTRA). TTRA was formed in 1995 to promote traditional fixed seat rowing. It also aims to encourage use of the river Thames for sport and recreation.



MAYOR OF RICHMOND UPON THAMES CHARITIES

The Horse Rangers Association

A young people's charity, including those with special needs, supporting personal development by teaching the management and riding of horses.

The Poppy Factory

Richmond charity makes poppies, crosses and wreaths for the Royal British Legion's annual Remembrance Day appeal. Also places wounded, injured or sick ex-military personnel of all ages into jobs beyond the Factory and all around the UK.

WHITTON BUISNESS ASSOCIATION

Supporting the Whitton community and local businesses.

SUPPORTING LOCAL PEOPLE WITH LEARNING DISABILITIES



'Stepping on Out' is a small local charity which produces hand made greetings cards by adults with learning disabilities.

It's a not for profit organisation with the aim of enabling people with disabilities to gain independence away from a college or day care environment.

They all work very hard to make their little business a success and eventually hope to employ other people with disabilities to help with production and administration.

They make and sell greetings cards, bookmarks and other goods to raise funds for their small business in the community.

They are all really charming hand made designs. The size of cards are C6 114 x 162 mm and come complete with envelope, insert and in clear plastic bags. All cards are blank inside and cost around £1 each. The cards can have preferred wording of your choice added to the front.

Our Vision

"For a world where adults with a learning disability have personal control and fulfillment in their own lives, enjoying equal participation with the general community."

Please support them by ordering from those illustrated on their web site at www.SteppingonOut.org.uk Also available from local stockists including Café Sunshine, Twickenham Riverside, the foyer of RichmondAid, 4 Waldegrave Road, Teddington or their new shop Stepping on Out, 7 The Causeway, Teddington, open Monday, Wednesday and Friday from 10am to 4.30pm, 0208 977 8042.



MP Vince Cable on a visit to Stepping on Out, where he spent time helping and talking to the group about their work and business.

THE YARDBIRDS 50TH ANNIVERSARY CONCERT

St George's Suite, Twickenham Stadium, Friday 15th March
Supported by the Jay Tamkin Band



The Yardbirds will celebrate their 50th anniversary when the band return to their Twickenham roots for a special one-off concert which will include guest spots with former Yardbirds members.

Pioneers of the British rhythm and blues and famous for launching the careers of 3 rock superstars, Eric Clapton, Jimmy Page and Jeff Beck. The band boasts two of its original members Jim McCarty and Chris Dreja, although Chris has been unwell lately and may

not be able to appear with the band but hopefully will make a guest appearance.

They are joined by guitarist Ben King (who critics have compared to Jeff Beck), Andy Mitchell, a powerful singer, formidable acoustic guitar and harmonica player and David Smale, a brilliant young bass player.

The concert is mainly standing, with some unreserved seating. This event will be a sell-out so early booking is advised.

Doors open 7pm. Supporting act Jay Tamkin Band 8pm. Yardbirds 9pm.

Part of proceeds towards The Twickenham Festival 2013.

www.eelpieclub.com

**Tickets now on sale
£25 (£23 Members)**

Buy Now

www.ticketweb.co.uk
or phone 08444 771000.

*All tickets will be £29
on the night (if still available).*



The Yardbirds Live Room Twickenham 2011

TWICKENHAM OPERATIC SOCIETY PRESENTS TOPS WINTER WARMER

St George's Suite, Twickenham Stadium Jan 24, 25 & 26 at 8pm

It's time to banish the Winter Blues and come and have a jolly evening out in the warm and welcoming atmosphere of the St George's Suite at Twickenham Stadium.

RFU sponsored TOPS will be singing favorite songs, performing excerpts from hit musicals and celebrating their recent "Best Musical of the Year" award. Bar opens 7.00pm.

The great night out - excerpts include...

- Jesus Christ Superstar • Grease • The Rat Pack
- Billy Elliot • A Rodgers and Hammerstein selection and
- TOPS Celebrates the 50th anniversary of James Bond

Tickets only £10 call 07989 565411

www.twickenhamoperatics.com/tickets (bkg fee applies)

tickets@twickenhamoperatics.com

Twickenham Operatic Society

TOPS'

Winter Warmer

a new year hangover cure!

St George's Suite - Twickenham Stadium

January 24th 25th 26th
Time: 8pm All tickets: £10



Previous TOPS shows, Twickenham Stadium



SUPPORTING OUR LOCAL COMMUNITY



TWICKENHAM, WHITTON, ST MARGARETS, ISLEWORTH AND EAST TWICKENHAM

As part of our good neighbour policy the RFU sponsors numerous events in our local community over the festive season.

Working with the Twickenham Town Business Association, the RFU helped with Christmas trees throughout the town.

The first Diamond Jubilee Gardens Christmas Evening on Twickenham Riverside was a real success owing to the organisation by Twickenham Alive and Richmond Council.

Recent support also went to the Whitton Christmas Fun Day in the High Street and the St Margarets Christmas Fair in Crown Road. Other events included the All Hallows Church Christmas fundraising dinner and East Twickenham Traders Association Christmas activities and Ivybridge senior citizens.



Festive fun at the Diamond Jubilee Gardens on Twickenham Riverside. After 30 years of neglect, the site was renovated last year. Credit to Lord True, Richmond Council and the local people who have battled for years to have this area brought back into public use.



NITIES OVER THE FESTIVE SEASON



ENGLAND MATCH TICKETS FOR RESIDENTS

Tickets for Major England Matches

The Rugby Football Union (RFU) is a membership organisation and gives priority to purchase tickets for major England matches to its member clubs, schools and constituent bodies. However, an allocation is available by ballot for local residents.

RFU Local Residents' Ballot to buy tickets for England matches

The ballot covers major England matches only. Those successful in the ballot can purchase a pair of tickets not normally available for public sale. There are 200 pairs of tickets to purchase for each major England match and open to residents living in TW1, TW2, TW3 2 and TW7 7. The next application form will be in the September 2013 edition of the RFU's Rugby Post magazine delivered locally and at – www.rfu.com/rugbypost For most other matches tickets are available from the RFU Ticket Office at the stadium 0871 222 2017 or from Ticketmaster 0844 847 2492 or www.ticketmaster.co.uk

TWICKENHAM STADIUM UPGRADE

To ensure that Twickenham Stadium is a truly world class venue heading towards 2015 and bring benefits for a further quarter of a century, a major upgrade is taking place.

Work began last summer with the main improvement being a state of the art new pitch installed over 14 weeks. The new pitch has excellent drainage to eliminate standing rainwater, under soil heating to keep frost out of the ground, a new irrigation system and desso fibres to provide additional stability.

In the past season the stadium was awarded five stars by Leonard Cheshire's Disability's Action for Access campaign and our national stadium continues to be at the forefront in catering for disabled visitors, spectators and guests of the RFU Injured Players Foundation.

The start of the complete mechanical and electrical upgrade has also begun as well as some 20 executive boxes being refurbished. Among other key improvements are: improved public catering facilities; upgraded wi-fi connectivity; new video screens at each end of the pitch; an IT backbone extension to cover the entire stadium; improved media areas; updated pitch floodlighting; centre tier LED signage to enable better fan engagement and information; replacement of areas of seating; turnstile and access control; facilities for people with disabilities; additional female toilets and safety and security upgrades. All works to be completed by summer 2015.

RECYCLING AT TWICKENHAM STADIUM

We consistently achieve over 60% recycling figures for event day waste, with the remaining diverted from landfill to energy from waste initiatives, maintaining our 100% diversion from landfill commitment on event days. We have also recently begun to recycle plastic and cardboard on site.

TWICKENHAM STADIUM WINS TOP HONOURS



RFU award winning ground staff Ian Ayling, Keith Kent and Andy Muir

Twickenham Stadium and Head Groundsman Keith Kent picked up a trio of awards from the Institute of Groundsmanship (IOG).

The awards received by the RFU were:

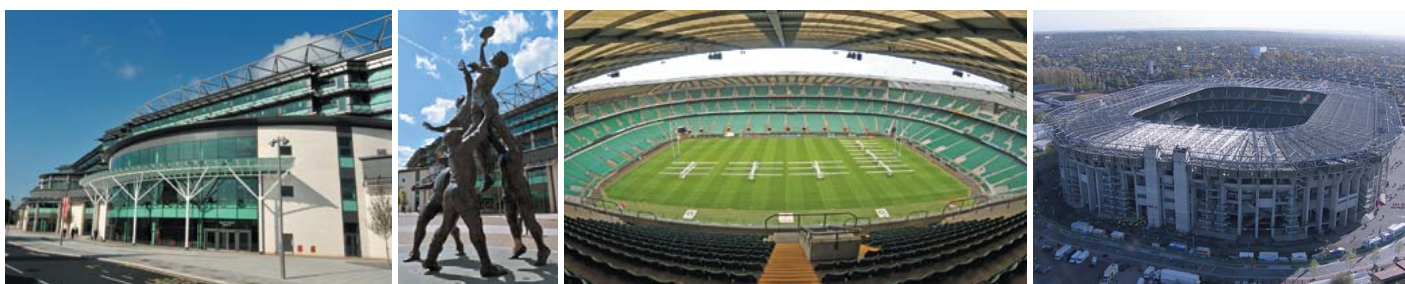
The Groundsmen's Groundsman of the Year across all sports: Winner: Keith Kent

IOG Professional Rugby Union Groundsman of the Year: Winner: Keith Kent

IOG Governing Bodies Professional Spectator Sports Ground of the Year: Winner: Twickenham Stadium

Now in their fourth year, the IOG Awards recognise leadership, innovation and outstanding achievement across every aspect of grounds care – from grassroots pitches to professional stadia.

Stadium Director Richard Knight said: "In a year that has seen the Twickenham pitch transformed, it is fitting that Keith and his team have been recognised in this way and the awards are fully deserved. It really tops things off for our fabulous stadium to also be recognised in this way and is testament to the hard work and enthusiasm of everyone who works here."



RFU STRAWBERRY HILL MUSIC & FUN DAY



On Sunday 7th July the Rugby Football Union presents the annual RFU Strawberry Hill Music & Family Fun Day in the grounds of the gothic house on Waldegrave Road in Twickenham. Around 8,000 people attended last year.

As well as providing the community with a fun day out, the aim of the event is to raise funds for restoration and improvements to Horace Walpole's little gothic castle Strawberry Hill House.

Last year's event contributed around £11,000 towards the restoration of the house. Once again there will be the popular live music stage for a feast of musical excellence, the usual array of



charity and craft stalls, children's entertainment, fairground rides, beer and Pimms tents, hot and cold food and refreshments. Bring a picnic and enjoy the day from 12noon until 7.30 pm.

For information or booking stalls at this popular local community event:
www.twickenhamalive.com
 also see www.strawberryhillhouse.org.uk

TWICKENHAM FESTIVAL 6-30 JUNE 2013



The new Twickenham Festival will be sponsored by the Rugby Football Union, organised by Twickenham Alive and supported by the Twickenham Town Business Association, Richmond Council and the Twickenham Riverside Trust.

From 6th to 30th June 2013 – Locations include Twickenham Riverside, Church Street, the Diamond Jubilee Gardens, Radnor Gardens, Orleans House and others to be announced.

Provisional festival events include:

6 June D-Day Dance Twickenham Rowing Club; **7 June** Church Street Market and Tug of War; **8 June** Twickenham Alive Blue Mile Riverside, Church Street Market, St Mary's Church Fair, **12 June** Jazz Cruise; **15 June** Jubilee Gardens 80s Music Day; **16 June** Twickenham Carnival, Riverside Market; **22 June** Twickenham Alive Dragon Boats; **23 June** Radnor Gardens Family Fun Day; Wine Tasting Cruise; **29/30 June** Riverside music at the Diamond Jubilee Gardens.

www.twickenhamalive.com

RFU EDUCATION PARTNERSHIP

The aim of the RFU's Education Partnership is to provide real benefits for 18 local schools.

Each school receives an annual grant for sports and leisure and an invitation to The World Rugby Museum & Stadium Tour free of charge.

The RFU also sponsors Richmond upon Thames Primary Schools' Borough Sports Day.

PARTNERSHIP SCHOOLS

TWICKENHAM
 Archdeacon Cambridge's
 CE School
 Orleans Infant School

St James's RC Primary Sch
 St Mary's CE School
 St Stephen's CE Junior Sch
 Trafalgar Infant School
 Trafalgar Junior School
 Orleans Park School
 Waldegrave School for Girls
 WHITTON
 Bishop Perrin CE School
 Chase Bridge School
 Heathfield Junior School
 Nelson School
 St Edmunds RC School
 Twickenham Academy
 HOUNSLOW
 The Heathland School
 ISLEWORTH
 Ivybridge Primary School
 Worplesdon Primary School

RFU STAFF DONATE £1000 TO INS & SPEAR

A total of £1000 was raised from RFU staff at the recent Rugby Store sale. The money was donated to two charities located in Twickenham and each will receive £500.

INS Integrated Neurological Services is a Twickenham based charity providing long-term support for people with neurological conditions and their carers. Supporting people who are living with the effects of long term neurological conditions such as head injuries, strokes, Parkinson's Disease and Multiple Sclerosis www.ins.org.uk

SPEAR is a Twickenham based charity doing excellent work across Richmond upon Thames helping homeless and other vulnerable people. SPEAR's outreach service helps to identify rough sleepers in the Borough and last year helped over 100 people who were homeless. Their helpline also received over 300 calls from people in need of housing support. www.spearlondon.org

RichmondBusinessExpo

Showcase Your Business

Over a 1,000 visitors will be at the Richmond Business Expo
Twickenham Stadium, Friday 26th April 2013

If you are a local business owner, wanting to seriously raise your profile, then the Richmond Business Expo is where to be on 26th April 2013. Held at Twickenham Stadium and sponsored by the RFU, this is thebestofrichmond's flagship event. And it's no ordinary expo!

Row upon row of soulless stands are barred. Instead, you will find one incredibly vibrant and informative event that showcases some of the best businesses in the borough. With separate zones for Home & Property, Business Services and Leisure & Community there will be something for everyone.



'How I Made It' seminars will take place in the Live Room and a drinks party for the exhibitors' takes place at the end of the show. In an age where social networking can take over how we communicate, people need to meet face to face to make real things happen. And there's no other event locally that brings so many local businesses together in one day.

It also provides a massive opportunity for the local economy. Residents are encouraged to drop by and meet those that could

Very organised event with a great atmosphere. With the amount of people we spoke to, time passed very quickly. We thoroughly enjoyed the experience

Aliyah Zaidi, The Big Yellow Feet Production Company



Thank you very much for all the hard work you put in to create a very exciting and vibrant show

Lisa Brian (visitor)

Expo 2012 attracted 82 exhibitors and over 1,000 attendees. As event organisers, we give a huge amount of support to all exhibitors on how to showcase their business effectively to guarantee a return on investment.



provide services for leisure and home. For budding entrepreneurs, it's a once-a-year opportunity to meet all the unique suppliers that can help your business to grow.

If you've ever thought of exhibiting, this is a prime opportunity – give it a go.

FREE registration
Book your ticket at
www.richmondexpo.co.uk

thebestofrichmond

EVENT DAY CONTROLLED PARKING ZONE



Signs around the stadium show details of when event day parking controls are next in operation

The Event Day Controlled Parking Zone (Zone R) is operated by the London Boroughs of Richmond upon Thames and Hounslow.

The aim of Zone R is to provide parking for local residents and their visitors and to deter stadium visitors from parking in local roads.

How Zone R works

The date of each event and the hours of operation are displayed on signs at entry points to Zone R which includes the HM and C Zones.

Outside the hours of operation, there is no restriction on parking in marked bays or single yellow lines, unless indicated by time plates. This does not apply to the HM and C Zones where restrictions apply.

Residents within Zone R must display their Residents' Permits on event days. The permits are FREE and valid in any residents' bay within Zone R when operational on event days.

Permits are issued by post and application forms can be obtained by Richmond Borough residents from 08456 122 660 Mon-Fri 9am to 5pm or email parkingpermits@richmond.gov.uk

Hounslow Borough residents can call 020 8583 6666 between 8.45am to 4.15pm Mon-Fri.

Visitors' permits are also available free of charge. For further information please call the telephone numbers listed above.

Blue disabled badge holders can park free in residents' bays and for up to three hours on single yellow lines, providing there are no restrictions.

Event day parking information:
www.richmond.gov.uk/parking

PARKING ZONE SCHEDULE 2013

Hours of operation 10am- 6pm or as advised on Event Day signs in roads close to the stadium.

Saturday 2 February
Saturday 23 February
Sunday 10 March
Saturday 27 April
Saturday 11 May TBC
Sunday 12 May TBC
Saturday 25 May
Sunday 26 May
Saturday 15 June
Saturday 16 June

The Boroughs of Richmond upon Thames and Hounslow are responsible for the implementation and enforcement of the Event Day Controlled Parking Zone.

Event Day Parking Helplines
Richmond Council 020 8744 0462
Hounslow Council 07852 310713
www.richmond.gov.uk/parking

EVENT DAY TEMPORARY ROAD CLOSURES



**TEMPORARY ROAD CLOSURES LINE
ON EVENT DAYS PHONE 020 8831 6604
OR www.twitter.com/lbrut**

In the interests of public safety, the police can authorise road closures before and after events.

The roads that can be affected are **Rugby Road, Whitton Road, London Road** and to support traffic dispersal after major events, access to the A316 from Hospital Bridge Road.

As a guide, road closures will be implemented for events attended by more than 25,000 or at the discretion of police should public safety become an issue. Normally the closures will be from half an hour, up to two hours for capacity events.

Twickenham Police have an event day information line on 020 8831 6604. This has a recorded message about road closures on the event day. At other times call 020 8247 7193. Information on the day also available at www.twitter.com/lbrut

Egerton Road barrier is open during road closures.

RFU EVENT DAY SHUTTLE BUS SERVICE

To encourage supporters to use public transport, the RFU provides up to 33 double deck buses running between the stadium and Richmond before and after matches and concerts.

The service operates from the A316 near Old Deer Car Park and close to Richmond Station for three hours prior to kick off. There is a charge of 50p.

For two hours after matches buses to Richmond/Hounslow East stations are free.



London United Buses donated £2,144 to BBC Children in Need from fares collected on the England v Australia match day.



TWICKENHAM
STADIUM

EVENTS TO NOVEMBER 2013

2013		Kick Off / Start Time	Est. Att.	Tickets
FEBRUARY				
Sat 2	RBS 6 Nations ENGLAND v SCOTLAND	4.00pm (finish 5.30pm)	82,000	Local residents' ballot Now Closed
Sat 23	RBS 6 Nations ENGLAND v FRANCE England Women v France Women	5.00pm (finish 6.30pm) 7.20pm (Free entry from 7.00pm)	82,000	Local residents' ballot Now Closed
MARCH				
Sun 10	RBS 6 Nations ENGLAND v ITALY	3.00pm (finish 4.30pm)	82,000	BUY TICKETS
Sat 23	Daily Mail RBS Schools' Day	from 11.00am	7,000	BUY TICKETS
Sun 24	British Universities' & College Finals	from 12.00 noon	3,000	BUY TICKETS
APRIL				
Sat 27	Army v Navy for the Babcock Trophy Combined Services U23 v Oxbridge U23	3.00pm (finish 4.30pm) 12.00noon	60,000	BUY TICKETS
MAY				
Sat 4	RFU Cup Finals & National U20 Final	from 11.00am	5,000	BUY TICKETS
Sat 11 & Sun 12	Marriott London Sevens Marriott London Sevens	9.30am-6.15pm 9.00am-6.45pm	50,000 60,000	BUY TICKETS BUY TICKETS
Sat 25	Aviva Premiership Rugby Final	3.00pm (finish 4.30pm)	82,000	BUY TICKETS
Sun 26	ENGLAND v BARBARIANS Bill Beaumont Cup Final County Championship Shield Final	1.00pm (finish 2.30pm) 3.15pm 5.15pm	40,000	BUY TICKETS
JUNE				
Sat 1	CONCERT TBC	6.00pm-10.30pm	55,000	Details to be announced
Sat 15	RIHANNA in CONCERT	6.00pm-10.30pm	55,000	Local residents' ballot January Rugby Post
Sun 16	RIHANNA in CONCERT	6.00pm-10.30pm	55,000	Local residents' ballot January Rugby Post
AUGUST				
Fri 2-Sun 4	The Watchtower Convention	10.00am-5.30pm	Up to 20,000 each day	
SEPTEMBER				
Sat 7	London Double Header	TBC see rfu.com/TwickenhamStadium	70,000	BUY TICKETS
NOVEMBER				
Sat 2	QBE International ENGLAND v AUSTRALIA	2.30pm (finish 4.00pm)	82,000	Local residents' ballot September Rugby Post
Sat 9	QBE International ENGLAND v ARGENTINA	2.30pm (finish 4.00pm)	82,000	Local residents' ballot September Rugby Post
Sat 16	QBE International ENGLAND v NEW ZEALAND	2.30pm (finish 4.00pm)	82,000	Local residents' ballot September Rugby Post
Sat 30	Barbarians v Fiji TBC	TBC	TBC	

NB. Events subject to change/others may be added. TBC: To Be Confirmed. Stadium gates open approximately 4 hours before KO.
For latest information www.rfu.com/TwickenhamStadium RFU Ticket Office: 0871 222 2017 / tickets@rfu.com / www.rfu.com

[BUY TICKETS](#) Tickets when available: www.rfu.com/tickets and www.ticketmaster.co.uk or 0844 847 2492 England photo: GettyImages



CHARITY CONCERT SPECIAL



CHIME FOR CHANGE TWICKENHAM STADIUM, SAT 1st JUNE

Founded by Gucci, CHIME FOR CHANGE is a new global campaign launched at TED2013 to raise funds and awareness for girls' and women's empowerment, led by Frida Giannini, Beyoncé Knowles-Carter and Salma Hayek Pinault.

On 1st June, CHIME FOR CHANGE will be hosting a live concert event at Twickenham Stadium to raise funds for the campaign to be announced 26 March.

CHIME FOR CHANGE serves to convene, unite and strengthen voices speaking out for girls and women around the world and will focus on three key pillars: Education, Health and Justice.

Gucci has a long history of engagement with girls' and women's issues. The campaign comes at a historic and pivotal moment for girls and women globally as the world's attention is drawn to international stories ranging from Malala's personal fight for education in Pakistan to headlines of

violence against women in all corners of the world, including India, Ireland, South Africa and the United States.

More than just raising awareness, CHIME FOR CHANGE, through its partner Catapult, encourages people throughout the world to support girls' and women's projects in a personalized, individual way. Catapult enables citizen philanthropy and is the first crowd-funding platform dedicated to advancing the lives of girls and women.

Catapult connects CHIME FOR CHANGE community members directly to organizations and projects focused on the causes that matter most to them, and currently represents over 50 organizations in 38 countries.

Gucci Creative Director and CHIME FOR CHANGE co-founder Frida Giannini said, "This is the emergency and the opportunity of today. We have reached a significant moment in the history of girls' and women's empowerment and now is the time for change. I think it is essential for girls and women to see and celebrate

cont. p2

IN THIS ISSUE



RIHANNA IN CONCERT
SAT 15 & SUN 16 JUNE SCHEDULE



TWICKENHAM ALIVE RIVERSIDE
FESTIVAL 6 JUNE - 7 JULY



JOB OPPORTUNITIES AT
TWICKENHAM STADIUM



STRAWBERRY HILL MUSIC &
FUN DAY SUNDAY 7 JULY



WHITTON ST GEORGE'S DAY
CELEBRATIONS SAT 20 APRIL

**RESIDENTS' BALLOT FOR DISCOUNTED
CHIME FOR CHANGE TICKETS PAGE 3**

SUPPORTING OUR LOCAL COMMUNITY

Annual sponsorship and financial commitments

- Richmond upon Thames Council Event Day Street Cleaning
- Event Day Temporary Toilets
- Richmond upon Thames Council Match Day Traffic Management and Twickenham Event CPZ
- Free Event Day Shuttle Buses
- 20 Local Schools in Twickenham, Whitton, Isleworth and Hounslow
- Richmond upon Thames Primary Schools' Sports Day
- Strawberry Hill Music & Fun Day
- Twickenham Town Business Assoc
- Twickenham Town Co-ordinator
- Richmond AID - Advice and Information on Disability
- Richmond Borough in Bloom flower baskets in Twickenham
- St Margarets Fair
- Crown Road Summer Fair
- St Margarets Christmas Fair
- Best of Richmond/Twickenham
- Whitton Business Association
- Whitton Christmas Fun Day
- Whitton St George's Day
- Homelink Day Respite Care Centre Whitton
- Richmond Shakespeare Society
- Richmond Concert Society
- Twickenham Riverside Trust
- Twickenham Alive
- Twickenham Gardening Association
- Twickenham Operatic Society
- Ivybridge Estate Summer Fun Day
- Ivybridge Residents Christmas Party
- Whitton Senior Citizen's Restroom
- Isleworth Public Hall

RFU Community Relations

If you would like information on RFU Community Relations, event days or Rugby Post contact Fraser Cullen, RFU Community Relations Manager, frascullen@rfu.com or 020 8831 6533

Latest info: rfu.com/TwickenhamStadium

Photos: www.leothephotographer.co.uk
Fraser Cullen, Getty Images.



what is possible. I hope that through CHIME we can help the voices calling for change to become so loud that they cannot be ignored."

CHIME FOR CHANGE will bring together a coalition of organizations and individuals to effect meaningful change for girls and women worldwide. The campaign's strategic partners include the PPR Corporate Foundation for Women's Dignity and Rights, the Bill & Melinda Gates Foundation, Facebook, Hearst Magazines, and Catapult. Additionally, The Huffington Post has joined as a digital media partner.

CHIME FOR CHANGE leadership is joined by an Advisory Board of issues experts, advocates and global leaders, including Hafsat Abiola, Muna AbuSulayman, Jimmie Briggs, Gordon and Sarah Brown, Lydia Cacho, David Carey, Joanne Crewes, Waris Dirie, Yasmeen Hassan, Arianna Huffington, Musimbi Kanyoro, John Legend, Pat Mitchell, Alyse Nelson, Sharmeen Obaid Chinoy, François-Henri Pinault,

Jada PinkettSmith, Julia Roberts, Jill Sheffield, Caryl Stern, Meryl Streep, and the Archbishop Desmond Tutu and his daughter Mpho Tutu, among others.

The movement aims to provoke, collect and share powerful stories of girls and women globally. CHIME FOR CHANGE will continue to update its community with exciting news.

To stay informed and for information about the Twickenham concert visit www.chimeforchange.org

Join the CHIME FOR CHANGE community on Facebook at www.facebook.com/chimeforchange.

CHIME FOR CHANGE

FOUNDED BY GUCCI

Tickets available from Ticketmaster.co.uk.

Golden Circle and Exclusive VIP Hospitality Packages also available call 0844 544 8053

RUGBY POST AVAILABLE FROM THE RUGBY STORE AND AT WWW.RFU.COM

The RFU's community magazine Rugby Post is distributed to over 30,000 homes and businesses local to Twickenham Stadium.

The magazine is published three or four times a year and contains information on RFU community relations, stadium events, event day information and the local residents' ticket ballots. If you do not receive it regularly, copies are available from Rugby House, the RFU Rugby Stores and Twickenham and Whitton libraries. Online at www.rfu.com/rugbypost



DISCOUNTED TICKETS FOR CONCERTS

RIHANNA DIAMONDS WORLD TOUR

WITH SPECIAL GUEST DAVID GUETTA

SAT 15 & SUN 16 JUNE SCHEDULE

STADIUM OPENS: 4.30pm

SUPPORT TBC: 5.45pm – 6.15pm

SPECIAL GUEST DAVID GUETTA:

6.45pm – 8.00pm

RIHANNA: on stage at 8.30pm

CURFEW: 10.30pm



Previous concerts have included The Rolling Stones, U2, Eagles, Bon Jovi, Rod Stewart, The Police, REM, Genesis, Iron Maiden, Help for Heroes featuring Robbie Williams with Gary Barlow and Lady Gaga.

DISCOUNTED TICKETS FOR LOCAL RESIDENTS

The 19 concerts hosted at Twickenham Stadium since 2003 have seen over 20,000 discounted tickets allocated to local residents.

Concerts are often sold out. However, the RFU retains 1,100 discounted tickets for every concert for local residents available by ballot in Rugby Post prior to any concert.

Concert ballots are available at rfu.com/rugbypost

RFU CONCERT LINE

Operational on concert days only

If residents local to the stadium do have any concerns or issues about concerts or require information, please call the RFU concert line on 07764 569402. The helpline will operate from 1pm to 11.30pm on concert days only.

LOCAL RESIDENTS' CHIME FOR CHANGE BALLOT 1,100 DISCOUNTED TICKETS FOR SATURDAY 1st JUNE

The RFU has reserved 1,100 tickets available for purchase by local residents at a 15% discount.

If you live in postcodes TW1, TW2, TW3 2 and TW7 7, you are eligible to enter the ballot to buy two tickets.

Successful applicants can buy a pair of tickets.

The first 550 drawn will be able to purchase a pair of discounted tickets.

Closing date is Monday 22nd April 2013.

To enter, please fill out **ALL** the details requested and send the application form to:

Fraser Cullen, RFU Concerts Ballot, Rugby House,
200 Whitton Road, Twickenham TW2 7BA.

**Only successful applicants will be notified
by Monday 29th April 2013.**

For further information www.chimeforchange.org

Note for successful applicants: There is a 15% discount on the ticket price of £45 reduced to £38.25. There is a service charge of £10 to all concert tickets to cover Box Office Charges and an admin fee for the event. So total of £48.25 per ticket for local residents. All ticket monies after VAT will go to The Chime for Change Charities after deducting £10.

**If successful I would like to buy two discounted
upper tier seat tickets total price £48.25 each.**

PLEASE PRINT CLEARLY

Name _____

Address _____

Postcode _____

Tel (Required) _____

Email (Optional) _____

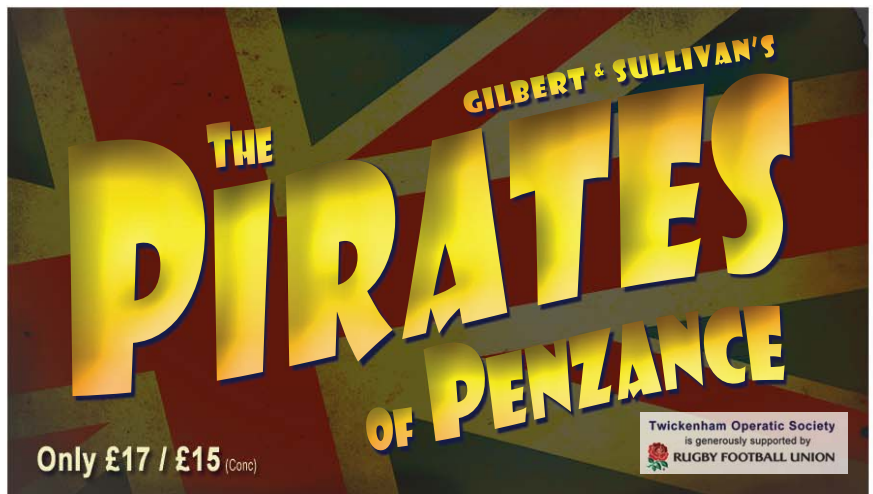
TWICKENHAM OPERATIC SOCIETY presents THE PIRATES OF PENZANCE

Normansfield Theatre, Teddington 16-20 July 2013

The Pirates Of Penzance spins a hilarious farce of sentimental pirates, bumbling policemen, dim-witted young lovers, dewy-eyed daughters and an eccentric Major-General, all morally bound to the often ridiculous dictates of honour and duty.

The beauty, wit and whimsy of Gilbert & Sullivan's classic music is mixed with a modern sensibility by TOPS, and presented in the historic Normansfield Theatre in Teddington. Supported by the RFU.

Normansfield Theatre is a Grade II* listed theatre, built originally as an entertainment hall in 1877 and completed in 1879. The theatre is a rare example of a private Victorian Theatre containing original painted scenery and other ornate fixtures and fittings, and is still very much active today.



Join **Twickenham Operatic Society**, the 2012 winners of the *artsrichmond* **Best Musical Production**, for a truly memorable evening in this fresh and hilarious production of one of Gilbert & Sullivan's most popular comic operas.

16 - 20 July, 7:45pm
Saturday matinee at 2.30pm

Normansfield Theatre

Langdon Down Centre, Teddington, TW11 9PS



Normansfield Theatre is owned and managed by The Down's Syndrome Association. Registered Charity No 1061474



Booking Line:
07989-565411

online: www.twickenhamoperatics.com/tickets

(bkg fee)

email: tickets@twickenhamoperatics.com

One event not to miss

Richmond Business Expo



26th April 2013, Twickenham Stadium
Opening seminar 10.30am | Expo 12pm - 6.30pm

Get inspired

High energy, no nonsense
marketing seminar
cramped with practical
nuggets.

Nigel Botterill

Up to **80+** businesses
showcasing for business,
leisure and home.

Vibrant & fruitful networking
Fabulous offers & freebies

**"Undoubtedly the most
professional worthwhile
event we attend all year."**

D. Nash, Beechgrove Press

Book your FREE ticket...
www.richmondexpo.co.uk

thebestofrichmond



creditsafe
simply smarter

AN ICE RINK AT CHRISTMAS – GET INVOLVED



Twickenham Alive is already thinking of Christmas and organising a temporary ice rink in the grounds of York House.

The rink will be visible from the main road and welcome people to the Borough over a six week period. Twickenham Alive has gained planning permission for this event and is now putting together a truly community rink which will be provided by Stage Electrics, suppliers of the London Eye rink and leaders in the field of eco ice rinks.

A book which shares the memories of those who skated at Richmond Ice Rink is being put together by members of the community and support for the ice rink is being given by organisations such as the Rugby Football Union and the Best of Richmond. Skaters from the former ice rink in East Twickenham will staff the rink and there will be displays from local figure skaters and others with skating skills.

Twickenham Alive (Ice Rink) Ltd has been set up and solicitors, Stone Rowe Brewer, have written legal agreements for those wishing to play a part in this venture.

Twickenham Alive is looking for individuals and organisation that can contribute in kind sponsorship in return for shares in the rink. These include people who can build a skate exchange or provide marquees, haulage companies, etc. Anyone who is willing to contribute equipment such as generators or chillers would help reduce rink costs. Companies that can provide portable toilets, seating for viewers, lighting and a PA system are sought.

Service companies such as insurance can also play a part. Sponsoring groups in the community to skate over the Christmas and New Year period will also help fund the rink. An online ticketing system is in place, block booking of tickets in advance. There is permission for one food and drink concession which has yet to be decided. If you would like to learn more about how the Twickenham Alive ice rink will be organised, please contact Twickenham Alive <http://www.twickenhamalive.com>

GET ALL THE LATEST RUGBY WORLD CUP 2015 INFORMATION



Rugby World Cup 2015 is less than 1000 days away. With the ball already rolling and venues and match schedules due to be announced by England Rugby 2015 soon, don't miss out.

To get all the news and information on ticketing, volunteering and much, much more join The Front Row.

SIGN UP AT
rugbyworldcup.com/frontrow

ENGLAND MATCH TICKETS FOR RESIDENTS

Tickets for Major England Matches

The Rugby Football Union (RFU) is a membership organisation and gives priority to purchase tickets for major England matches to its member clubs, schools and constituent bodies. However, an allocation is available by ballot for local residents.

RFU Local Residents' Ballot to buy tickets for England matches

The ballot covers major England matches only. Those successful in the ballot can purchase a pair of tickets not normally available for public sale. There are 200 pairs of tickets to purchase for each major England match and open to residents living in TW1, TW2, TW3 2 and TW7 7. The next application form will be in the September 2013 edition of the RFU's Rugby Post magazine delivered locally and at – www.rfu.com/rugbypost For most other matches tickets are available from the RFU

Ticket Office at the stadium 0871 222 2017 or from Ticketmaster 0844 847 2492 or www.ticketmaster.co.uk

A Date to Remember

Rugby Football Union presents

RFU Strawberry Hill Music Day

Strawberry Hill House, Waldegrave Road, Twickenham
Sunday 7 July 2013, 12noon-7.30pm



Family Fun Day
supporting the restoration
of Strawberry Hill House

**RFU
LIVE MUSIC STAGE**
7 live bands including
The Blue Meanies
Nark Drool and the Shudders
Dr Ika's Pharmacy
Ariyah
and others to be confirmed

Live Music, Fun for Kids,
Crafts & Charity Stalls,
Food & Beer Tents and more...



Bring a
Picnic & Enjoy



For more information go to
www.twickenhamalive.com

Entry £2 donation
Children 0-15 free

To Benefit



TWICKENHAM ALIVE RIVERSIDE FESTIVAL 2013

THURSDAY 6th JUNE – SUNDAY 7th JULY



Twickenham Alive Riverside Festival will feature a considerable number of community activities at Twickenham Riverside and nearby. Lots of fun events, music, entertainment, action and fun for kids.

FESTIVAL PROGRAMME

Some events and times subject to change

Thursday 6th June

D-Day Dance

19.30 to 23.30 Eel Pie Island
Raising funds for charity

Saturday 8th June

Twickenham Alive Charity Mile

Kayak & Stand Up Paddleboarding
Races 10.00 to 20.00 - The Embankment
Help raise funds for charity

Live Music Stage

14.00 to 20.00 – The Embankment

Water Zorbing

10.00 to 20.00 – Champion's Wharf, The Embankment

Mess about on the water – roll or bounce!

Shetland Pony Rides

10.00 to 18.00 – Statue Gardens

Children's Fairground

10.00 to 19.00 – The Embankment

Stalls

10.00 to 19.00 – The Embankment
Crafts, Food, Sweets & More

Sunday 9th June

The Turks Head 10K Fun Run

10.30 Start/Finish Marble Hill Park

Saturday 15th June

Radnor Gardens Family Fun Day

12noon-19.00

Live Music Stage

Bar, Stalls – Food & Crafts, Pony Rides

Strawberry Hill Bowls Club Taster

Sessions for Adults and Kids

Children's Fairground

Saturday 22nd June

Stand Up Paddleboarding Marathon

12.00 to 17.00 Paddle from Kew to Twickenham and back

Sunday 23rd June

Twickenham Alive Dragon Boat Races

10.00 to 18.00 – The Embankment

Help raise funds for charity

Live Music Stage

14.00 to 20.00 – The Embankment

Water Zorbing

10.00 to 20.00 – Champion's Wharf, The Embankment

Mess about on the water – roll or bounce!

Shetland Pony Rides

10.00 to 18.00 – Statue Gardens

Children's Fairground

10.00 to 19.00 – The Embankment

Stalls

10.00 to 19.00 – The Embankment
Crafts, Food, Sweets & More

Eel Pie Row

14.30 to 15.30

Row twice around Eel Pie Island

Start/Finish opposite White Swan Pub

Celebration Sunday on The Diamond

Jubilee Gardens TBC

Organised by Twickenham Riverside Trust

Sunday 30th June

Family Fun Day on The Diamond

Jubilee Gardens TBC From 12noon

Sunday 7th July

RFU Strawberry Hill Music & Fun Day

Live Music Stage

Bar, Stalls, Food & Crafts

Water Zorbing, Pony Rides

Children's Fairground

See www.twickenhamalive.com for further information



www.twickenhamalive.com

TWICKENHAM ALIVE SPONSORED BY THE RUGBY FOOTBALL UNION

RFU EDUCATION PARTNERSHIP

SUPPORTING LOCAL SCHOOLS

The aim of the RFU's Education Partnership is to provide real benefits for 20 schools in our local community.

Each school receives an annual financial grant for sports and leisure and an invitation to visit The World Rugby Museum & Stadium Tour free of charge.

The RFU also sponsors Richmond upon Thames Primary Schools' Borough Sports Day.

PARTNERSHIP SCHOOLS

TWICKENHAM

Archdeacon Cambridge's CE School
Orleans Infant School
St James's RC Primary School
St Mary's CE School
St Stephen's CE Junior School
Trafalgar Infant School
Trafalgar Junior School
Orleans Park School
Waldegrave School for Girls

WHITTON

Bishop Perrin CE School
Chase Bridge School
Heathfield Junior School
Nelson School
St Edmunds RC School
Twickenham Academy

HOUNSLOW

The Heathland School

ISLEWORTH

Ivybridge Primary School
Worple Primary School
Isleworth Blue CE School
Gumley House Convent School

TWICKENHAM ALIVE FILM FESTIVAL

The Live Room, Twickenham Stadium, Friday 26 April
Register on-line at www.twickenhamfilmfestival.com
for free entry

The first Twickenham Alive Film Festival Awards and festival screenings will take place at the Live Room at Twickenham Stadium on 26th April.

The prizes will be presented by Maria Walker, the Chief Operating Officer Twickenham Film Studios. Anyone who would like to attend this event can register online at www.twickenhamfilmfestival.com

There is an exciting line up of short films lasting around one and a half hours. There are a number of awards for people from the borough: Borough Animation, Borough Community, Borough Documentary and Borough Attraction. There will be ten awards altogether and others include National Student, National Drama, International Winner and overall Festival Winner.

Twickenham Alive has received a variety of short films for the film festival which have come from as far as Estonia, Brazil, Denmark, Finland, India, Italy, Japan, Portugal and the USA. There have also been submissions from other parts of the UK outside the Borough.

Students from Richmond upon Thames College and UK universities are well represented in the final screenings but the films come from a wide range of

age groups. Local amenity groups and students from the Richmond Adult Community College have produced short films which portray the attractions, events and history of the London Borough of Richmond upon Thames.



There are documentaries, comedies and a children's film of the unknown magic of Twickenham. In fact there will be something for everyone with the screenings arranged to keep the audience anticipating what will be shown next.

The second Twickenham Alive Film Festival will be launched on the awards' night and we hope that the festival will be an annual event.

The film festival is supported by the London Borough of Richmond upon Thames, the RFU, Twickenham Film Studios and the Best of Richmond.

www.twickenhamalive.com

CROWN ROAD ST MARGARETS SUMMER FAIR



Sunday 9th June - from 11 am.

A day for family fun and entertainment

Live music from local bands, mini fun fair, craft and charity stalls, face painting, street entertainers, great food, traditional Punch & Judy shows, children's magic show and more!

For information www.mystmargarets.com

To book a stall at the fair please contact

events@mystmargarets.com

for all other enquiries please contact

traders@mystmargarets.com

ST GEORGE'S DAY CELEBRATIONS IN WHITTON SATURDAY 20TH APRIL 12NOON TO 6.30PM



Whitton will celebrate St George's Day for the tenth consecutive year supported by the RFU.

There will be the popular big parade featuring marching bands, a costume parade, vintage cars and American motorbikes.

The parade will also include St George and the dragon, local schoolchildren, local scouts, guides and brownies as well as the Mayor of Richmond. The music will be provided by bands, the Royal British Legion Youth Band, and the Horse Rangers.

Following the parade there will be an afternoon of fun and music for all the family up and down the High Street. Something for everyone with children's rides, live bands, crafts and charity stalls, candyfloss, popcorn, BBQs and traditional English fayre. Some of the monthly Whitton Sunday market stallholders will also be present.

The event organised by Whitton Business Association (WBA) who help to promote Whitton as a good place to shop and visit.

**Forthcoming Whitton Sunday Markets are on:
24 March, 28 April, 19 May and 30 June.**



ST MARGARETS FAIR SATURDAY 13th JULY

MOOR MEAD, ST MARGARETS

The popular St Margarets Fair is run entirely by volunteers and all profits are donated to four local schools, along with several local charities.

Supported by the Rugby Football Union, there is a full programme of entertainment throughout the day.

- The popular children's '5-a-side' football tournament in the morning on Moormead.
- During the afternoon there is the dog show on little Moor Mead across Hillview Road.
- Musical entertainment runs all afternoon on the stage with several live bands and local performers
- There are announcements, interviews and music throughout the day from Radio West Middlesex.
- Charity stalls, craft stalls and lots of fun for kids.

The fair organisers run the Tea Tent, Beer Tent, Pimms Stall, the BBQ, the Bric-a-Brac Stall, the Silent Auction, and the Coconut Shy. All profits from these stalls go direct to the local schools and charities.

www.stmargaretsfair.org



BE PART OF THE TWICKENHAM EXPERIENCE



Twickenham Stadium and its official hospitality provider Twickenham Experience Ltd aim to provide the best sporting event experience in the UK. The drama and passion of international rugby, the finest food and drink, and the friendly personal service combine to create a world-class venue at the heart of the local community.

Many who work to make Twickenham Stadium events such a success live in the area. With a team of over 2,500 staff needed on an international match day, Twickenham Experience are now recruiting casual staff for the coming season. **We want to offer this opportunity first and foremost to our neighbours.**



Roles Available:

Hospitality Waiter/ess
Retail Bar Staff
Kitchen Porters
Hospitality Managers*
Retail Managers*
Chefs*



Personal qualities:

Experience is highly beneficial although not essential. Your professional approach to work and a can-do attitude is what counts.

What we offer:

- Unrivalled event experience in a world-class sporting environment, right on your doorstep
- Competitive rates of pay
- Flexible working - The work is of a casual nature and can therefore fit in around other work, parenting and study commitments.
- Complimentary staff meals
- Full induction
- Uniform is provided
- Training

How to apply:

For further information and to apply please visit:
www.compasseventjobs.com/twickenham

All applicants will be required to attend an interview and induction training day and personal references will be sought. Applicants will be asked to produce documents that prove their right to work in the UK.

RFU supporting our local community.

* Experience required for these roles which must be validated by references



IMAGINE HAVING THE KEYS TO TWICKENHAM STADIUM

Volunteer Tour Guides at the Home of England Rugby

For a chosen few access behind the scenes comes with a chance to mug up on the history and fascinating facts of England Rugby's national stadium and, even better, the opportunity to pass that knowledge on to fans of every age and from every nation.

The World Rugby Museum which welcomes over 25,000 visitors a year on their Stadium Tours, has a few vacancies for volunteer Tour Guides to join their enthusiastic team. Tour

Guides come from all walks of life and bring a wealth of knowledge and experience along with them.

The part-time voluntary position comes with travel expenses and, although knowledge of rugby union is an advantage it is not essential as training is provided.

Being a Tour Guide gives the opportunity to make new friends and to wax lyrical about this historic sporting venue.

If you think you would enjoy the role, please email museum@rfu.com or telephone Lindsay Simmons, Tours Manager on 0208 892 8877 for more information.

EVENT DAY CONTROLLED PARKING ZONE



Signs around the stadium show details of when event day parking controls are next in operation

The Event Day Controlled Parking Zone (Zone R) is operated by the London Boroughs of Richmond upon Thames and Hounslow.

The aim of Zone R is to provide parking for local residents and their visitors and to deter stadium visitors from parking in local roads.

How Zone R works

The date of each event and the hours of operation are displayed on signs at entry points to Zone R which includes the HM and C Zones.

Outside the hours of operation, there is no restriction on parking in marked bays or single yellow lines, unless indicated by time plates. This does not apply to the HM and C Zones where restrictions apply.

Residents within Zone R must display their Residents' Permits on event days. The permits are FREE and valid in any residents' bay within Zone R when operational on event days.

Permits are issued by post and application forms can be obtained by Richmond Borough residents from 08456 122 660 Mon-Fri 9am to 5pm or email parkingpermits@richmond.gov.uk

Hounslow Borough residents can call 020 8583 6666 between 8.45am to 4.15pm Mon-Fri.

Visitors' permits are also available free of charge. For further information please call the telephone numbers listed above.

Blue disabled badge holders can park free in residents' bays and for up to three hours on single yellow lines, providing there are no restrictions.

Event day parking information:
www.richmond.gov.uk/parking

PARKING ZONE SCHEDULE 2013

Hours of operation 10am- 6pm or as advised on Event Day signs in roads close to the stadium.

Saturday 6 April - see local signs

Saturday 27 April

Saturday 11 May TBC

Sunday 12 May TBC

Saturday 25 May

Sunday 26 May

Saturday 1 June

Saturday 15 June

Saturday 16 June

Saturday 7 September

Saturday 2 November

Saturday 9 November

Saturday 16 November

Saturday 30 November TBC

Saturday 28 December TBC

The Boroughs of Richmond upon Thames and Hounslow are responsible for the implementation and enforcement of the Event Day Controlled Parking Zone.

Event Day Parking Helplines
Richmond Council 020 8744 0462
Hounslow Council 07852 310713
www.richmond.gov.uk/parking

EVENT DAY TEMPORARY ROAD CLOSURES



**TEMPORARY ROAD CLOSURES LINE
ON EVENT DAYS PHONE 020 8831 6604
OR www.twitter.com/lbrut**

In the interests of public safety, the police can authorise road closures before and after events.

The roads that can be affected are **Rugby Road, Whitton Road, London Road** and to support traffic dispersal after major events, access to the A316 from Hospital Bridge Road.

As a guide, road closures will be implemented for events attended by more than 25,000 or at the discretion of police should public safety become an issue. Normally the closures will be from half an hour, up to two hours for capacity events.

Twickenham Police have an event day information line on 020 8831 6604. This has a recorded message about road closures on the event day. At other times call 020 8247 7193. Information on the day also available at www.twitter.com/lbrut

Egerton Road barrier is open during road closures.

RFU EVENT DAY SHUTTLE BUS SERVICE

To encourage supporters to use public transport, the RFU provides up to 33 double deck buses running between the stadium and Richmond before and after matches and concerts.

The service operates from the A316 near Old Deer Car Park and close to Richmond Station for three hours prior to kick off. There is a charge of 50p.

For two hours after matches buses to Richmond/Hounslow East stations are free.





TWICKENHAM
STADIUM

EVENTS TO DECEMBER 2013

2013		Kick Off / Start Time	Est. Att.	Tickets
APRIL				
Sat 6	Heineken Cup Quarter Final Saracens v Ulster	6.30pm (finish 8.00pm)	35,000	BUY TICKETS
Sat 27	Army v Navy for the Babcock Trophy Combined Services U23 v Oxbridge U23	3.00pm (finish 4.30pm) 12.00noon	60,000	BUY TICKETS
Sun 28	Potential ERC Match TBC For information when available www.rfu.com			
MAY				
Sat 4	RFU Cup Finals & National U20 Final	from 11.00am	5,000	BUY TICKETS
Sat 11 & Sun 12	Marriott London Sevens Marriott London Sevens	9.30am-6.15pm 9.00am-6.45pm	50,000 60,000	BUY TICKETS BUY TICKETS
Sat 25	Aviva Premiership Rugby Final	3.00pm (finish 4.30pm)	82,000	BUY TICKETS
Sun 26	ENGLAND v BARBARIANS Bill Beaumont Cup Final County Championship Shield Final	1.00pm (finish 2.30pm) 3.15pm 5.15pm	40,000	BUY TICKETS
JUNE				
Sat 1	CHIME FOR CHANGE CONCERT	6.00pm-10.30pm	55,000	Local resident's ballot in this issue
Sat 15	RIHANNA in CONCERT	6.00pm-10.30pm	55,000	Local residents' ballot Now Closed
Sun 16	RIHANNA in CONCERT	6.00pm-10.30pm	55,000	Local residents' ballot Now Closed
AUGUST				
Fri 2-Sun 4	The Watchtower Convention	10.00am-5.30pm	Up to 20,000 each day	
SEPTEMBER				
Sat 7	London Double Header	TBC see rfu.com/TwickenhamStadium	70,000	BUY TICKETS
NOVEMBER				
Sat 2	QBE International ENGLAND v AUSTRALIA	2.30pm (finish 4.00pm)	82,000	Local residents' ballot September Rugby Post
Sat 9	QBE International ENGLAND v ARGENTINA	2.30pm (finish 4.00pm)	82,000	BUY TICKETS
Sat 16	QBE International ENGLAND v NEW ZEALAND	2.30pm (finish 4.00pm)	82,000	Local residents' ballot September Rugby Post
Sat 30	Barbarians v Fiji	TBC	30,000	BUY TICKETS
DECEMBER				
Thurs 12	Varsity Match Oxford University v Cambridge University Oxford U21s v Cambridge U21s	2.00pm (finish 3.30pm) 11.30am	25,000	BUY TICKETS
Sat 28	Aviva Premiership Rugby Big Game 6 TBC Harlequins v TBC	TBC	TBC	

NB. Events subject to change/others may be added. TBC: To Be Confirmed. Stadium gates open approximately 4 hours before KO.
For latest information www.rfu.com/TwickenhamStadium RFU Ticket Office: 0871 222 2017 / tickets@rfu.com / www.rfu.com

[BUY TICKETS](#) Tickets when available: www.rfu.com/tickets and www.ticketmaster.co.uk or 0844 847 2492 England photo: GettyImages



RFU STRAWBERRY HILL MUSIC & FUN DAY – SUNDAY 7 JULY

Admission only £2 donation for adults, children U15 free

On Sunday 7th July the Rugby Football Union presents the eighth annual Strawberry Hill Music & Family Fun Day in the grounds of the gothic house on Waldegrave Road, Twickenham. Over 7,000 attended last year.

As well as providing the community with a fun day out, the aim is to raise funds for restoration of Horace Walpole's

little gothic castle, Strawberry Hill House.

Strawberry Hill is an exceptional building of local, national and international importance. For tours www.strawberryhillhouse.org.uk

Once again there will be the popular live music stage, the usual array of charity and craft stalls, children's rides and entertainment, beer and Pimms tents, food and refreshments. Why not bring a picnic and enjoy the day?

From 12noon until 7.30pm the music stage will feature bands, mostly with a local connection: The Mustangs, The Carnabys, The Blue Meanies, Nark Drool & The Shudders, The John Idan Group and Dr Ika's Pharmacy.

For further information please see www.twickenhamalive.com



IN THIS ISSUE



**TWICKENHAM ALIVE
RIVERSIDE FESTIVAL JUNE-JULY**



**TWICKENHAM FILM FESTIVAL
AWARDS AT THE LIVE ROOM**



**SHAKESPEARE IN THE OPEN AIR
DOWN BY THE RIVER**



**WHITTON HIGH STREET ALIVE
FOR ST GEORGE'S DAY FUN**

COURT OF APPEAL APPROVES NEW TWICKENHAM STATION



The Court of Appeal has dismissed an appeal by Twickenham Residents Action Group (TRAG) to overturn Richmond Council's planning permission for a new Twickenham Station.

Leader of Richmond Council Lord True said, "I welcome the court's decision and I hope that we can finally

lay this matter to rest and move forward with creating a station that is fit for purpose.

"Twickenham station is a disgrace and this whole process has resulted in massive delays to the developers' schedule.

"This council and other key stakeholders are investing millions of pounds into improving Twickenham after a generation of neglect. It is time to proceed."

The scheme is supported by the RFU, The Mayor of London, the GLA, the Secretary of State for Communities and Local Government and the majority of local people.

The RFU is pleased that there is now clarity around the project. We will be working with all parties over the coming weeks to ensure that significant improvements are delivered to the station in time for the 2015 Rugby World Cup.

SUPPORTING OUR LOCAL COMMUNITY

Annual sponsorship and financial commitments

- Richmond upon Thames Council Event Day Street Cleaning
- Event Day Temporary Toilets
- Richmond upon Thames Council Match Day Traffic Management and Twickenham Event CPZ
- Free Event Day Shuttle Buses
- 20 Local Schools in Twickenham, Whitton, Isleworth and Hounslow
- Richmond upon Thames Primary Schools' Sports Day
- Strawberry Hill Music & Fun Day
- Twickenham Town Business Assoc
- Twickenham Town Co-ordinator
- Richmond AID - Advice and Information on Disability
- Richmond Borough in Bloom flower baskets in Twickenham
- St Margarets Fair
- Crown Road Summer Fair
- St Margarets Christmas Fair
- Best of Richmond/Twickenham
- Whitton Business Association
- Whitton Christmas Fun Day
- Whitton St George's Day
- Homelink Day Respite Care Centre Whitton
- Richmond Shakespeare Society
- Richmond Concert Society
- Twickenham Riverside Trust
- Twickenham Alive
- Twickenham Gardening Association
- Twickenham Operatic Society
- Ivybridge Estate Summer Fun Day
- Ivybridge Residents Christmas Party
- Whitton Senior Citizen's Restroom
- Isleworth Public Hall

RFU Community Relations

If you would like information on RFU Community Relations, event days or Rugby Post contact Fraser Cullen, RFU Community Relations Manager, frascullen@rfu.com or 020 8831 6533

Latest info: rfu.com/TwickenhamStadium

Photos: www.leothephotographer.co.uk
Fraser Cullen, Getty Images.

STADIUM CONCERTS THIS SUMMER

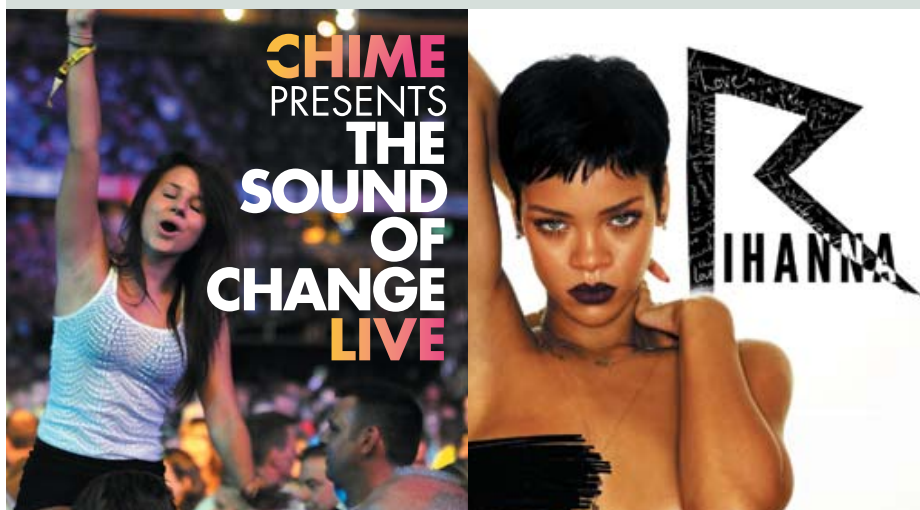
THE SOUND OF CHANGE

SATURDAY 1st JUNE 6-10.30pm

RIHANNA IN CONCERT

SATURDAY 15th & SUNDAY 16th JUNE 6-10.30pm

Tickets subject to availability from www.ticketmaster.co.uk



The 19 concerts hosted at Twickenham Stadium since 2003 have seen over 20,000 discounted tickets allocated to local residents.

Concerts are often sold out. However, the RFU retains 1,100 discounted tickets for every concert for local residents available by ballot in Rugby Post prior to any concert.

Future concert ballots are available at rfu.com/rugbypost

RFU CONCERT LINE

Operational on concert days only

Sound levels for concerts are a condition of the concert licence. Sound is monitored by an independent consultant with Richmond Council's Environmental Health in support, to ensure permitted levels are not breached.

If any person believes that levels are in excess of those permitted then call the RFU concert line 07764 569402.

The concert line will operate on concert days only from 1pm to 11.30pm.

RUGBY POST AVAILABLE FROM THE RUGBY STORE AND AT WWW.RFU.COM

The RFU's community magazine Rugby Post is distributed to over 30,000 homes and businesses local to Twickenham Stadium.

The magazine is published three or four times a year and contains information on RFU community relations, stadium events, event day information and the local residents' ticket ballots. If you do not receive it regularly, copies are available from Rugby House, the RFU Rugby Stores and Twickenham and Whitton libraries. Online at www.rfu.com/rugbypost



RUGBY WORLD CUP 2015 MATCH VENUES AND SCHEDULES

Earlier this month, England Rugby 2015 (ER 2015), Tournament Organisers, and Rugby World Cup Limited (RWCL), Tournament Owners, announced the full list of match venues and published the match schedule for Rugby World Cup 2015, hosted in England between 18 September and 31 October 2015.

The 13 match venues and host cities selected are: Twickenham Stadium (London), Wembley Stadium (London), Olympic Stadium (London), Millennium Stadium (Cardiff), Manchester City Stadium (Manchester), St James' Park (Newcastle), Elland Road (Leeds), Leicester City Stadium (Leicester), Villa Park (Birmingham), Kingsholm Stadium (Gloucester), Stadiummk (Milton Keynes), Brighton Community Stadium (Brighton) and Sandy Park (Exeter).

The match schedule will see 25 matches played in dedicated rugby venues, seven in multi-event stadia and 16 in football venues. This blend of stadia will provide a variety of Rugby World Cup match day experiences and over two million opportunities for fans to engage with one of the world's most recognisable major sports events.

The home of England Rugby will play an important role in Rugby World Cup 2015, with the Tournament opening at Twickenham Stadium on Friday September 18, 2015, where England will face Oceania 1, confirmed at the close of the qualification process in 2014. In addition to a selection of pool games, Twickenham Stadium will also host two Quarter-Finals, the Semi-Finals and the Final on October 31. Two Quarter Finals will also be played in Cardiff at the Millennium Stadium and the Bronze Final will be at the Olympic Stadium.



England Rugby 2015 has also launched the vision for Rugby World Cup 2015, outlining the tournament as *a celebration of rugby and its unique values, exciting and inspiring our nation and the world to play and support the game*. With the tournament preparation now fully underway, supporters can look forward to more details on kick off times, tickets on sale, volunteering and much more over the course of the next 12 months. To get all the news sent straight to your inbox join The Front Row at www.rugbyworldcup.com/frontrow.

England Rugby 2015 Chief Executive, Debbie Jevans, commented: "Rugby has so much to offer and over the next two and a half years, we will be working hard with RWCL to deliver a tournament which celebrates the unique values of rugby and excites and inspires the nation and the world to play and support the game. We look forward to welcoming the world to England in 2015."

TWICKENHAM STADIUM FIXTURES FOR RUGBY WORLD CUP 2015

Friday September 18

ENGLAND v OCEANIA 1 – Pool A

Saturday September 19

France v Italy – Pool D

Saturday September 26

ENGLAND v WALES – Pool A

Saturday October 3

ENGLAND v AUSTRALIA – Pool A

Saturday October 10

Australia v Wales - Pool A

Saturday October 17

Quarter Final 2

Winner of Pool B v Runner Up of Pool A

Sunday October 18

Quarter Final 4

Winner Pool A v Runner Up of Pool B

Saturday October 24

Semi Final 1

Winner of Quarter Final 1 v Winner of Quarter Final 2

Sunday October 25

Semi Final 2

Winner of Quarter Final 3 v Winner of Quarter Final 4

Saturday October 31
Rugby World Cup Final

RFU STRAWBERRY HILL MUSIC & FUN DAY

The Rugby Football Union presents a fundraising event to support Strawberry Hill House and local charities, in the grounds of the house, Waldegrave Road, Twickenham TW1 4SX
SUNDAY 7th JULY 2013 – 12NOON TO 7.30PM



Fun for all the family – Music Stage, Crafts, Charity Stalls, Kids' Rides, Food & Beer Tents.
Admission: Adults only £2 donation with children U15 free

LIVE MUSIC STAGE



THE MUSTANGS: A breath of fresh air on the British blues scene. They combine the power and punch of traditional R'n'B with great original songs and a show-stopping stage set. They have established a formidable reputation as one of the hardest-working and most charismatic bands in British blues. In 2010 the band was nominated for Best Band at the prestigious British Blues Awards. www.themustangs.co.uk



THE BLUE MEANIES: A 5-piece band who play 'music to dance to' hits from the 1960s through to the 1990s. The band members have an impressive musical pedigree having played and recorded with Tears For Fears, Stackridge and The Korgis. Bass guitarist James Warren wrote the classic 1980's Korgis hit 'Everybody's Got To Learn Sometime' a song which always goes down well with audiences – especially when they realise the original composer is singing it! www.bathmeanies.co.uk



NARK DROOL & THE SHUDDERS: An authentic 50s rock 'n' roll band. Clad in drape jackets and drainpipe trousers, petticoats and ra-ra dresses, they specialise in toe tapping favourites from the late 50s and early 60s – Elvis and Eddie, Buddy and Billy, the Shadows and the Shangri-las. All on the wrong side of 40 – with more freedom passes than plectrums on stage – so this is music that they know very well. www.narkdrool.co.uk



DR IKA'S PHARMACY: A blues rock band specializing in Hendrix and Cream covers. Featuring Dr Ika on guitar and vocals, a respected and talented guitarist from Georgia (former USSR). Ivan Hoe is an outstanding drummer from Johannesburg, South Africa. Ivan has played with several jazz, rock and blues bands in UK. Andrew Heart on bass and vocals who has played with Billy Idol, Phil Lynott, Bob Geldof, Micky Moody and others. www.drikaspharmacy.com



JOHN IDAN GROUP: John originally from Detroit, Michigan, is a former member of The Yardbirds. He recorded two albums with The Yardbirds, the star-studded Birdland in 2003 and Live at B.B. King's in 2006. In 2008 he released his debut solo album 'The Folly' on which he plays all the instruments. He has since been recording for his 2nd album and worked on various musical projects playing in the UK, Europe and the USA. www.johnidan.com



THE CARNABYS: A five-piece local band who play classic covers and their own material. They were the winners of this year's Hard Rock Rising, the world's largest global battle of the bands contest on May 8. They won almost £6,500 of music equipment, an album and video produced through Hard Rock Records and a spot on the at the Hard Rock Calling festival in London, alongside Bruce Springsteen and Kasabian. www.thecarnabys.com

A Date to Remember

Rugby Football Union presents

RFU Strawberry Hill Music Day

Strawberry Hill House, Waldegrave Road, Twickenham
Sunday 7 July 2013, 12noon-7.30pm



Family Fun Day
supporting the restoration
of Strawberry Hill House

**RFU
MUSIC STAGE**
Live bands including
The Mustangs
The Blue Meanies
Nark Drool & the Shudders
Dr Ika's Pharmacy
John Idan Group
The Carnabys
others to be confirmed

Live Music, Fun for Kids,
Crafts & Charity Stalls,
Food & Beer Tents and more...



Bring a
Picnic & Enjoy



For more information go to
www.twickenhamalive.com
Entry £2 donation
Children 0-15 free

Supported by www.cleanacoverltd.co.uk

To Benefit



SUPPORTING OUR LOCAL WHITTON COMMUNITY

MEDITERRANEAN SUNSHINE AND ST GEORGE



When Whitton High Street closed for the annual St George's Day parade on Saturday April 20th, thousands flocked to enjoy the fun event in glorious sunshine.

Organised by the Whitton Business Association and attended by the Mayor of Richmond upon Thames, there was plenty of entertainment and fun for all of the family throughout the day.

The celebrations began with the big parade from Nelson School, led by the Royal British Legion Youth Marching Band, followed by St. George and his Dragon, all the local primary schools, Whitton Wanderers FC, Whitton Lions Rugby Club and the Edmundian Players. They were accompanied by Bob the Builder with friends, the Co-op dray horses and carriage, London Fire Brigade, military vehicles, scooters and motorbikes.

Stallholder were out in force, local charities, crafts, plants, clothes, accessories and toys and WBA market stalls selling cheeses, home-made cakes and patisseries. Many of the shops also had their own stalls and there was a variety of festival food, as well as the beer and Pimms tents.

Throughout the day there were street performers and lots of music for all age groups, with disco and live performances from Big Jim Soul and the Monskeys.

Richmond Council and the RFU provide financial support for St George's Day and Christmas Fun Day in Whitton.





TWICKENHAM ALIVE FILM FESTIVAL



www.leothephotographer.co.uk

The first Twickenham Alive Film Festival took place at the Live Room, Twickenham Stadium on Friday 26th April.

The screening of 14 short films and the awards ceremony were attended by some 300 people, with prizes presented by Maria Walker, Chief Operating Officer Twickenham Film Studios.

Entries for the festival came from all parts of the Borough of Richmond upon Thames, highlighting its attractions and encouraging filmmakers of all ages to participate. The winning films will be on the Twickenham Alive website sending out a snapshot of Richmond upon Thames to the world.

Surprisingly, news of the Twickenham Alive Film Festival has carried across the world with entries from Japan, Brazil, the USA, India, Portugal and Italy.

The Twickenham Alive Film Festival will be an annual event. The second Festival will give filmmakers until Spring 2014 to submit their films.

Thanks to all who have supported the Festival: Richmond Council's Civic Pride Fund, the Rugby Football Union, Richmond Council's Arts Department, Twickenham Film Studios, McGeachie Medd Estate Agents, the Best of Richmond, Visit Richmond, Richmond upon Thames College and the British Film Institute.

To view the winning films
www.twickenhamfilmfestival.com

For information on the next
Twickenham Alive Film Festival
www.twickenhamalive.com

RESULTS OF THE FIRST TWICKENHAM ALIVE FILM FESTIVAL

Borough Animation Award

School Run Strut - Alban Low. Every day I walk to school with my two daughters, we see different shapes every day and hear Twickenham and Teddington waking up.

Borough Community Award

Bursting at the Seams - The Teddington Society. Highlights of Teddington and the local area. David Cousins of The Strawbs presents a video snapshot of the area.

International Award

Panca Popolare Italiana (Italian Popular Bench) - Werther Germondari. Images of "Italian Popular Bench". They frame the same park bench in Finanze Square, Rome.

Borough Young Filmmaker Award

Sanctuary - Isaac Whittingham
Richmond upon Thames College

A short film displaying the simple pleasures of home life compared to the hustle and bustle of everyday life.

National Drama Award

Fresh - Oliver Vilas

A day in the life of a foreign student in a new educational environment and society. Problems mount as his classmates bully him and teachers lack of understanding whilst at home he faces neglect from his parents.

National Young Filmmaker Award

Art of Motion - Rhodri Williams
University of Gloucestershire

A short documentary exploring "Parkour". It explores some of the deeper philosophical meaning behind the sport and sense of community and spirit.

National Animation Award

Lofty Thirst - Febrianto Pudi Utama
University for the Creative Arts - Farnham

In a dry world, water is key for survival. The water source is guarded so dearly by one species of desert-dwellers who prevents others to benefit from it. Until one day...

Borough Documentary Award

River Walk - Joycelyn Lewis
Richmond Adult Community College

River Walk is a short documentary following the path of the River Thames from Richmond Lock. Looking at the history that surrounds Richmond as well as featuring locals who work along the river.

Borough Attraction Award

Garden of Reason - Ham Youth Centre

The film was a collaboration between the National Trust, Ham Youth Centre and Grey Court School. Young people performed parkour or free running in the grounds of Ham House. Music students from Grey Court composed the sound track.

Borough Drama Award

I've Got You - Dias Mussirov

A man buys a new mobile phone, which absorbs him more and more.

Festival Award

The Magick of Twickenham - Toby Alington

A children's drama set in Twickenham, involving a magical statue in York House Gardens, Langton's Bookshop and the surrounding area.

HIGHLY COMMENDED:

Borough Young Filmmaker

Cat-astrophe - Ben Elgar

Borough Drama

Nightwalking - Daniel Cormack

Borough Documentary

Poppy Factory - Gordon Swire

SPECIAL MENTION:

Hampton and Richmond Borough Football Club - The Beavers

Nina Gerstenberger

Therapy

Directed by Femi Oladigbolu / Written by Abraham Adeyemi

Welcome to World Wetlands

WWT London Wetland Centre

Ghost Girl

First Light

It Happened at Arthur's

Harley Alexander

TWICKENHAM ALIVE R

TWICKENHAM ALIVE SUPPORTED BY THE RUGBY FOOTBA



Twickenham
Alive
Riverside
Festival
2013



Friday 7th June - Saturday 8th June
Sunday 9th June - Sunday 16th June
Saturday 22nd June - Sunday 23rd June
Sunday 30th June - Sunday 7th July



The Twickenham Alive Riverside Festival organised by Twickenham Alive and sponsored by the RFU, will provide the town with four weekends of fun packed entertainment on or near the riverside.

The Festival was inspired by the success of the Twickenham Riverside Regatta in September 2011 and last year's Jubilee Riverside Festival. It includes river based activities, live music, kids rides, craft and market stalls.

TWICKENHAM ALIVE SPONSORED BY THE RUGBY FOOTBALL UNION

IVERSIDE FESTIVAL 2013

ALL UNION • FESTIVAL EVENTS FROM JUNE 7th TO JULY 7th



Festival events organised by Twickenham Alive

The following programme of events is subject to change

Friday 7th June

D-Day Dance - a great night out
19.00-23.30 Twickenham Rowing Club,
Eel Pie Island. Nark Drool & the Shudders
Ticket £15 each or £26 for two, includes
food. Full bar at club prices
Tickets on sale NOW from
www.twickenhamalive.com

Saturday 8th June

Twickenham Alive Charity Mile
Kayak & Stand Up Paddleboarding Races
10.00 to 20.00 – The Embankment
Help raise funds for charity

Live Music Stage

Sponsored by www.tenant-finder.co.uk
14.00-20.00 – The Embankment
14.00-14.45 The T-Bone Band
15.05-15.50 Lawrence and The Business
16.10-17.00 Robin Bibi Band
17.30-18.30 The Carnabys
19.00-20.00 Alix Anthony band

Water Zorbing

10.00-20.00 – Champion's Wharf, The
Embankment
Mess about on the water - roll or bounce!

Shetland Pony Rides and Children's Yoga Tent

10.00-18.00 – Statue Gardens

Children's Fairground

10.00-19.00 – The Embankment

Stalls

10.00-19.00 – The Embankment
Crafts, Food, Sweets & More

Sunday 9th June

The Turks Head 10km Fun Run
10.30 Start and finish at Marble Hill
Park via Twickenham, Teddington Lock
Bridge, Ham House, Petersham Fields
and Richmond Bridge, for charity.

Sunday 16th June

Twickenham Yacht Club Open Day
11.00-17.00

Try your hand at dinghy sailing or enjoy
a motor cruise around Eel Pie Island.

Saturday 22nd June

Stand Up Paddleboarding Marathon
09.00-18.00 Paddle from Shepperton to
Putney via Twickenham. Raising funds
for St Mark's Hospital Foundation.
Hawaiian party at Boathouse pub, Putney

Sunday 23rd June

Twickenham Alive Dragon Boat Races
10.00-18.00 – The Embankment

Help raise funds for charity

Live Music Stage

14.00-20.00 – The Embankment
See www.twickenhamalive.com for line-up

Water Zorbing

10.00-20.00 – Champion's Wharf, The
Embankment

Mess about on the water - roll or bounce!

Shetland Pony Rides and Children's Yoga Tent

10.00-18.00 – Statue Gardens

Children's Fairground

10.00-19.00 – The Embankment

Stalls

10.00-19.00 – The Embankment
Crafts, Food, Sweets & More

Eel Pie Row

14.30-15.30

Row twice around Eel Pie Island
Start/Finish opposite White Swan Pub

Sunday 30th June

Family Fun Day

Diamond Jubilee Gardens

12.00-19.00

Music & Dance

Children's Activities

Stalls, Food & Crafts

Picnic on the grass

Take part in a special art workshop and
help build a medicinal garden with artist
Emily Allchurch (12-3pm) creating your
own 3D plants and flowers.

Sunday 7th July

RFU Strawberry Hill Music & Fun Day

Live Music Stage

Bar, Stalls, Food & Crafts

Water Zorbing

Shetland Pony Rides

Children's Fairground

www.twickenhamalive.com

TWICKENHAM ALIVE SPONSORED BY THE RUGBY FOOTBALL UNION

RICHMOND BUSINESS EXPO 2013 AT RFU



For the fifth year running, the heart of the local business community descended upon Twickenham Stadium on April 26th for the Richmond Business Expo.

Organised by local marketing specialists thebestofrichmond and sponsored by the RFU, this vibrant showcase for local businesses sums up why Richmond upon Thames is such an inspiring place to do business.

The day started with an energetic seminar by award winning entrepreneur Nigel Botterill who pulled no punches on what businesses need to do to market themselves effectively.

Over 70 exhibitors showcased their services for business, health, leisure and home. Business owners and visitors packed the Rose Suite throughout the day to meet with the exhibitors and network.

Nick Taimitarha from thebestofrichmond added: "We organise the Expo to bring the local business community together. It's such a lively day that proves its worth for the new contacts that people make, the opportunity to learn and leads generated to grow new business. We thank the RFU for their ongoing support in making this event possible."

3 July **Stage & Screen**
Concert starts at 8pm

13 July **British Army Brass Band**
Concert starts at 3pm

20 July **Army Big Band**
Concert starts at 3pm

20 July **Rock & Pop**
Concert starts at 7pm

24 July **Last Night of the Proms**
Concert starts at 8pm

Concerts in the Park 2013

Royal Military School of Music,
Kneller Hall, Twickenham, TW2 7DU

Tickets **£15** Concessions **£10**

@Corpsarmymusic
 Corpsofarmymusic

www.army.mod.uk/khconcerts

ENGLAND MATCH TICKETS FOR RESIDENTS

Tickets for Major England Matches

The Rugby Football Union (RFU) is a membership organisation and gives priority to purchase tickets for major England matches to its member clubs, schools and constituent bodies. However, an allocation is available by ballot for local residents.

RFU Local Residents' Ballot to buy tickets for England matches

The ballot covers major England matches only. Those successful in the ballot can purchase a pair of tickets not normally available for public sale. There are 200 pairs of tickets to purchase for each major England match and open to residents living in **TW1, TW2, TW3 2 and TW7 7**. The next application form will be in the September 2013 edition of the RFU's Rugby Post magazine delivered locally and at – www.rfu.com/rugbypost For most other matches tickets are available from:

RFU Ticket Office at the stadium 0871 222 2017 or from Ticketmaster 0844 847 2492 or www.ticketmaster.co.uk

ST MARGARETS FAIR SATURDAY 13th JULY

MOOR MEAD, ST MARGARETS

The popular St Margarets Fair is run entirely by volunteers and all profits are donated to four local schools, along with several local charities.

Supported by the Rugby Football Union, there is a full programme of entertainment throughout the day.

- The popular children's 5-a-side football tournament in the morning on Moormead.
- During the afternoon there is the dog show on little Moor Mead across Hillview Road.
- Musical entertainment runs all afternoon on the stage with several live bands and local performers
- There are announcements, interviews and music throughout the day from Radio West Middlesex.
- Charity stalls, craft stalls and lots of fun for kids.

The fair organisers run the Tea Tent, Beer Tent, Pimms Stall, the BBQ, the Bric-a-Brac Stall, the Silent Auction, and the Coconut Shy. All profits from these stalls go direct to the local schools and charities.

www.stmargaretsfair.org



TEDDINGTON RIVER FESTIVAL Sunday 8th September 2013



The Rugby Football Union is delighted to be supporting the Teddington River Festival which returns to Teddington Lock this September offering a free family fun day spanning both sides of the river.

There will be activities on the Lock Island and the Ham Tow Path including a live music stage, angling activities, arts & crafts, boat rides, boats on display in the Barge Lock, canoe/skiff racing, charity and community stands, face painting, fairground rides, food & refreshments, kids shows, try-a-boat, water safety road shows, wildlife displays and more.

The fun will continue at the Teddington Lifeboat Station and the Manor Road Recreation Ground where visitors will be able to meet and greet the lifeboat crew, climb aboard a lifeboat and watch the crew in action during a series of river rescue demonstrations.

It is a fantastic platform to raise the profile of the River Thames and all those who use and serve the river as well as raising

the profile of local businesses, charities and community groups.

The festival is a charitable community event, all profits are donated to the nominated charities including the RNLI, River Thames Boat Project and Teddington Memorial Hospital. Follow us on twitter @TeddRiverFest and on Facebook.

Please visit www.teddingtonriverfestival.com for more information about the event and booking a stand.



RICHMOND SHAKESPEARE SOCIETY PRESENTS THE MERRY WIVES OF WINDSOR – SUN 21 – SAT 27 JULY

Open Air Shows in the Fountain Gardens, Twickenham

The Thames flowing softly to one side, leafy trees framing a moonlit sky, the graceful naked ladies statues grouped around their pool – all make a gorgeous setting for the nearest thing to sitcom Shakespeare ever wrote.

Written at Queen Elizabeth I's command, this perennially enjoyable farce offers laughs galore. Sir John Falstaff – Shakespeare's most-loved comic character – has a cunning plan to get money and women.

But a frantically jealous husband, two feisty wives, idiotically funny foreigners, and the famous laundry-basket scene see him get his come-uppance instead.

The RSS will be performing nightly, except Wednesday, with a matinee on the Saturday. Bring along your picnic chairs, sit back and enjoy the show. There is a licensed bar on site. Why not experience live theatre in the wonderful outdoor setting of the Fountain Gardens on Twickenham Riverside?



The Merry Wives of Windsor

The Fountain Gardens, The Embankment, Twickenham

Sponsored by the Rugby Football Union

From Sun 21 to Sat 27 July (except Wed) at 7.45pm,
plus matinee 3pm on Sat 27 July.

**Tickets from £12 (concessions available) from June 1 from
www.richmondshakespeare.org.uk or 020 8744 0547**

Booking opens June 1st.

No seats, so please bring a rug or chairs. Licensed bar.

RFU & TWICKENHAM RIVERSIDE TRUST



Twickenham pool site derelict and closed to the public for 32 years



Children's play facilities



Council leader gets to work



June 2012, Diamond Jubilee Gardens opens thanks to Richmond Council

The Twickenham Riverside Trust is a charitable organisation, composed of local people who care about the immediate and long-term future of Twickenham Riverside (particularly the site now known as the Diamond Jubilee Gardens).

In 1935 the Twickenham lido swimming pool was opened on the riverside site. This pool was closed for repairs in 1981. The pool site lay derelict for 24 years until 2005 when a playground and cafe were opened on a corner of the site.

Eventually after a public campaign, the Diamond Jubilee Gardens were opened to the public for the first time on 24th June 2012 with a celebration organised by the Twickenham Riverside Trust, Richmond Council and sponsored by the Rugby Football Union.

The Twickenham Riverside Trust's objects are:

- To preserve, protect and improve, for the benefit of the public, the riverside and its environs at Twickenham
- To provide charitable facilities there for public recreation and community activities;
- To advance the education of the public in the history and environment of the area.

TRT is currently working with Richmond Council to provide a programme of events at the Diamond Jubilee Gardens. These events will be sponsored by the Rugby Football Union. www.twickenhamriversidetrust.org.uk

TWICKENHAM OPERATIC SOCIETY

supported by the RFU

Booking now for TWO exciting shows for 2013



The Pirates Of Penzance spins a hilarious farce of sentimental pirates, bumbling policemen, dim-witted young lovers, dewy-eyed daughters and an eccentric Major-General, all morally bound to the often ridiculous dictates of honour and duty.

The beauty, wit and whimsy of Gilbert & Sullivan's classic music is mixed with a modern sensibility by TOPS, and presented in the historic Normansfield Theatre in Teddington.

16 - 20 July, 7:45pm
Saturday matinee at 2.30pm
Normansfield Theatre

Langdon Down Centre, Teddington, TW11 9PS

Normansfield Theatre is owned and managed by The Down's Syndrome Association. Registered Charity No 1061474

Booking Line
07989-565411

online

www.twickenhamoperatics.com/tickets

(bkg fee)

email

tickets@twickenhamoperatics.com



7 - 13 September, 7:45
Sunday matinee at 6.00pm

Hampton Hill Playhouse

Hampton Hill High St., Hampton, TW13 4SS

generously supported by RUGBY FOOTBALL UNION

OTHER SUMMER EVENTS SUPPORTED BY THE RFU

IVYBRIDGE FUN DAY

Sunday 7th July

Family fun and entertainment for all ages at the
Ivybridglink Centre in Isleworth



RADNOR GARDENS FAMILY FUN DAY

Saturday 15th June, from 12.00-19.00

Radnor Gardens, Cross Deep, Twickenham, TW1 4RB

Join in on a day of family fun at Radnor Gardens,
with attractions for all ages. Live music, stalls,
pony rides, taster bowls sessions,
children's playground, rides,
cafe bar and food.

CROWN ROAD ST MARGARETS



Please join us for a
day of family fun
and entertainment

This years Crown Road Community Summer Fair
will be held on **Sunday 9th June**
in Crown Road St Margarets

Many side
stalls,
games and
competitions



The Fair opens
at 11am and
draws to a
close from 4pm



sponsored by
St Margarets
St Margarets Traders Association

We'll be having a visit from
My St Margarets Farm... come
say *hello* to the animals



For further information please go to
www.mystmargarets.com
or email
traders@mystmargarets.com
stall enquiries to
events@mystmargarets.com

Please note our community events, hanging
baskets, Christmas trees and all that we do for
your St Margarets are funded by your local
independent traders with sponsorship help
from the council and RFU. Corporate
supermarkets and chain stores are not involved
in these endeavours. Please consider this when
shopping and remember... where you have a
choice 'Shop with the Heart'.



R LONDON BOROUGH OF
RICHMOND UPON THAMES

RFU

RFU EDUCATION PARTNERSHIP

SUPPORTING LOCAL SCHOOLS

The aim of the RFU's Education Partnership is to provide real benefits for 20 schools in our local community.

Each school receives an annual financial grant for sports and leisure and an invitation to visit The World Rugby Museum & Stadium Tour free of charge.

The RFU also sponsors Richmond upon Thames Primary Schools' Borough Sports Day.

PARTNERSHIP SCHOOLS

TWICKENHAM

Archdeacon Cambridge's CE School
Orleans Infant School
St James's RC Primary School
St Mary's CE School
St Stephen's CE Junior School
Trafalgar Infant School
Trafalgar Junior School
Orleans Park School
Waldegrave School for Girls

WHITTON

Bishop Perrin CE School
Chase Bridge School
Heathfield Junior School
Nelson School
St Edmunds RC School
Twickenham Academy

HOUNSLOW

The Heathland School

ISLEWORTH

Ivybridge Primary School
Worple Primary School
Isleworth Blue CE School
Gumley House Convent School



The annual Richmond upon Thames Borough Schools Sports Day is sponsored by the RFU and takes place on Wednesday 5th June at St Mary's University in Twickenham.

RICHMOND AID - A CHARITY RUN BY AND FOR DISABLED PEOPLE



Richmond AID is a charity run by and for disabled people in the London Borough of Richmond upon Thames and surrounding areas.

The charity supports disabled people, families, carers and professionals by providing services such as the Advice Service, Richmond SPADE (gardening service), the Benefits Service and support with employment and training.

They support people of all ages with all kinds of disabilities, including physical and sensory impairments, mental health issues and learning difficulties. Their aim is to support disabled people to live independent lives and to have the same opportunities as non-disabled people.

Richmond AID, sponsored by the RFU for the past four years, work with many organisations to meet the needs of disabled people and are keen to continue to develop successful partnerships.

CARERS CONFERENCE

You are invited to attend the annual Carers Conference being held in national Carers Week at Twickenham Stadium



CARERS WEEK : MONDAY 10 – SUNDAY 16 JUNE 2013

This years national Carers Week theme is Prepared to Care?

Wednesday 12 June 2013

Venue | Carling Room, Twickenham Stadium, Rugby Road

Following the very successful event in 2012, Richmond Carers Centre are pleased to announce the 10th annual Carers Week conference supported by the RFU.

The event is designed for carers to have their say, talk about experiences and socialise. The event is being hosted by Richmond Carers Centre in partnership with Carers Hub service providers, with the assistance of the London Borough of Richmond upon Thames and Richmond Clinical Commissioning.

EVENT DAY CONTROLLED PARKING ZONE



Signs around the stadium show details of when event day parking controls are next in operation

The Event Day Controlled Parking Zone (Zone R) is operated by the London Boroughs of Richmond upon Thames and Hounslow.

The aim of Zone R is to provide parking for local residents and their visitors and to deter stadium visitors from parking in local roads.

How Zone R works

The date of each event and the hours of operation are displayed on signs at entry points to Zone R which includes the HM and C Zones.

There is a full CPZ in operation for major events (35K plus) and a minor CPZ (30K or less) covering just Whitton Road area and Rugby Road for smaller events.

Outside the hours of operation, there is no restriction on parking in marked bays or single yellow lines, unless indicated by time plates. This does not apply to HM and C Zones.

Residents within Zone R must display their Residents' Permits on event days. The permits are FREE and valid in any residents' bay within Zone R when operational on event days.

Permits are issued by post and application forms can be obtained by Richmond Borough residents from 08456 122 660 Mon-Fri 9am to 5pm or email parkingpermits@richmond.gov.uk

Hounslow residents call 020 8583 6666 between 8.45am to 4.15pm Mon-Fri.

The RFU funds subsidised and free shuttle buses, Richmond Council's parking enforcement, street cleaning, community toilets and traffic management on all event days.

PARKING ZONE SCHEDULE 2013

Hours of operation 10am- 6pm or as advised on Event Day signs in roads close to the stadium.

Saturday 25 May

Sunday 26 May

Saturday 1 June

Saturday 15 June

Saturday 16 June

Saturday 7 September

Saturday 2 November

Saturday 9 November

Saturday 16 November

Saturday 30 November TBC

Saturday 28 December

Saturday 22 February

Sunday 9 March

The Boroughs of Richmond upon Thames and Hounslow are responsible for the implementation and enforcement of the Event Day Controlled Parking Zone.

Event Day Parking Helplines
Richmond Council 020 8744 0462
Hounslow Council 07852 310713
www.richmond.gov.uk/parking

EVENT DAY TEMPORARY ROAD CLOSURES



**TEMPORARY ROAD CLOSURES LINE
ON EVENT DAYS PHONE 020 8831 6604
OR www.twitter.com/lbrut**

In the interests of public safety, the police can authorise road closures before and after events.

The roads that can be affected are **Rugby Road, Whitton Road, London Road** and to support traffic dispersal after major events, access to the A316 from Hospital Bridge Road.

As a guide, road closures will be implemented for events attended by more than 25,000 or at the discretion of police should public safety become an issue. Normally the closures will be from half an hour, up to two hours for capacity events.

Twickenham Police have an event day information line on 020 8831 6604. This has a recorded message about road closures on the event day. At other times call 020 8247 7193. Information on the day also available at www.twitter.com/lbrut

Egerton Road barrier is open during road closures.

RFU EVENT DAY SHUTTLE BUS SERVICE

To encourage supporters to use public transport, the RFU provides up to 33 double deck buses running between the stadium and Richmond before and after matches and concerts.

The service operates from the A316 near Old Deer Car Park and close to Richmond Station for three hours prior to kick off. There is a charge of 50p.

For two hours after matches buses to Richmond/Hounslow East stations are free.





TWICKENHAM
STADIUM

EVENTS TO MARCH 2014

2013		Kick Off / Start Time	Est. Att.	Tickets
MAY				
Sat 25	Aviva Premiership Rugby Final	3.00pm (finish 4.30pm)	82,000	BUY TICKETS
Sun 26	ENGLAND v BARBARIANS County Championship Division 2 Plate Final Bill Beaumont Cup Final County Championship Shield Final	1.00pm (finish 2.30pm) 9.30am 3.15pm 5.15pm	55,000	BUY TICKETS
JUNE				
Sat 1	SOUND OF CHANGE CONCERT	6.00pm-10.30pm	55,000	Local residents' ballot Now Closed
Sat 15	RIHANNA in CONCERT	6.00pm-10.30pm	55,000	Local residents' ballot Now Closed
Sun 16	RIHANNA in CONCERT	6.00pm-10.30pm	55,000	Local residents' ballot Now Closed
AUGUST				
Fri 2-Sun 4	The Watchtower Convention	10.00am-5.30pm	Up to 20,000 each day	
Sat 17 & Sun 18	Club World Sevens Club World Sevens	TBC see rfu.com/TwickenhamStadium TBC see rfu.com/TwickenhamStadium	20,000 20,000	BUY TICKETS BUY TICKETS
SEPTEMBER				
Sat 7	London Double Header	TBC see rfu.com/TwickenhamStadium	70,000	BUY TICKETS
NOVEMBER				
Sat 2	QBE International ENGLAND v AUSTRALIA	2.30pm (finish 4.00pm)	82,000	Local residents' ballot September Rugby Post
Sat 9	QBE International ENGLAND v ARGENTINA	2.30pm (finish 4.00pm)	82,000	BUY TICKETS
Sat 16	QBE International ENGLAND v NEW ZEALAND	2.30pm (finish 4.00pm)	82,000	Local residents' ballot September Rugby Post
Sat 30	Barbarians v Fiji	TBC	40,000	BUY TICKETS
DECEMBER				
Thurs 12	Varsity Match Oxford University v Cambridge University Oxford U21s v Cambridge U21s	2.00pm (finish 3.30pm) 11.30am	25,000	BUY TICKETS
Sat 28	Aviva Premiership Rugby Big Game 6 Harlequins v TBC	TBC	TBC	BUY TICKETS
2014				
FEBRUARY				
Sat 22	RBS 6 Nations ENGLAND v IRELAND	4.00pm (finish 5.30pm)	82,000	Local residents' ballot in Jan Rugby Post
MARCH				
Sun 9	RBS 6 Nations ENGLAND v WALES	3.00pm (finish 4.30pm)	82,000	Local residents' ballot in Jan Rugby Post

NB. Events subject to change/others may be added. TBC: To Be Confirmed. Stadium gates open approximately 4 hours before KO.
For latest information www.rfu.com/TwickenhamStadium RFU Ticket Office: 0871 222 2017 / tickets@rfu.com / www.rfu.com

[BUY TICKETS](#) Tickets when available: www.rfu.com/tickets and www.ticketmaster.co.uk or 0844 847 2492 England photo: GettyImages