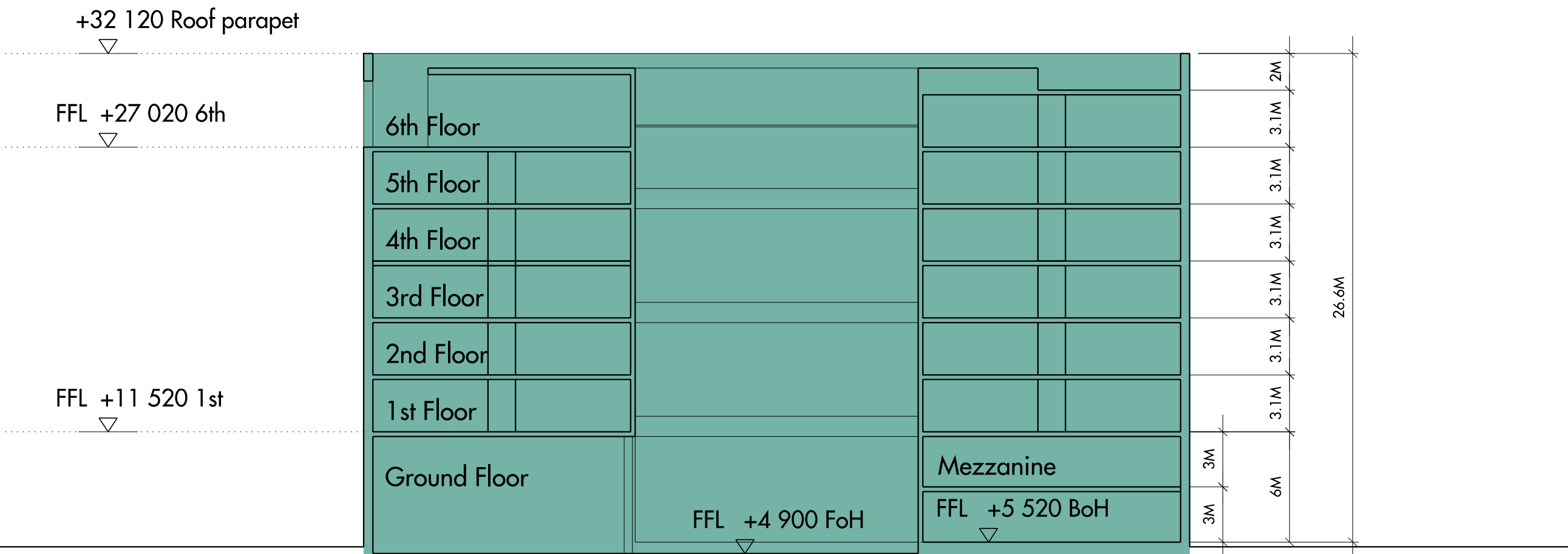
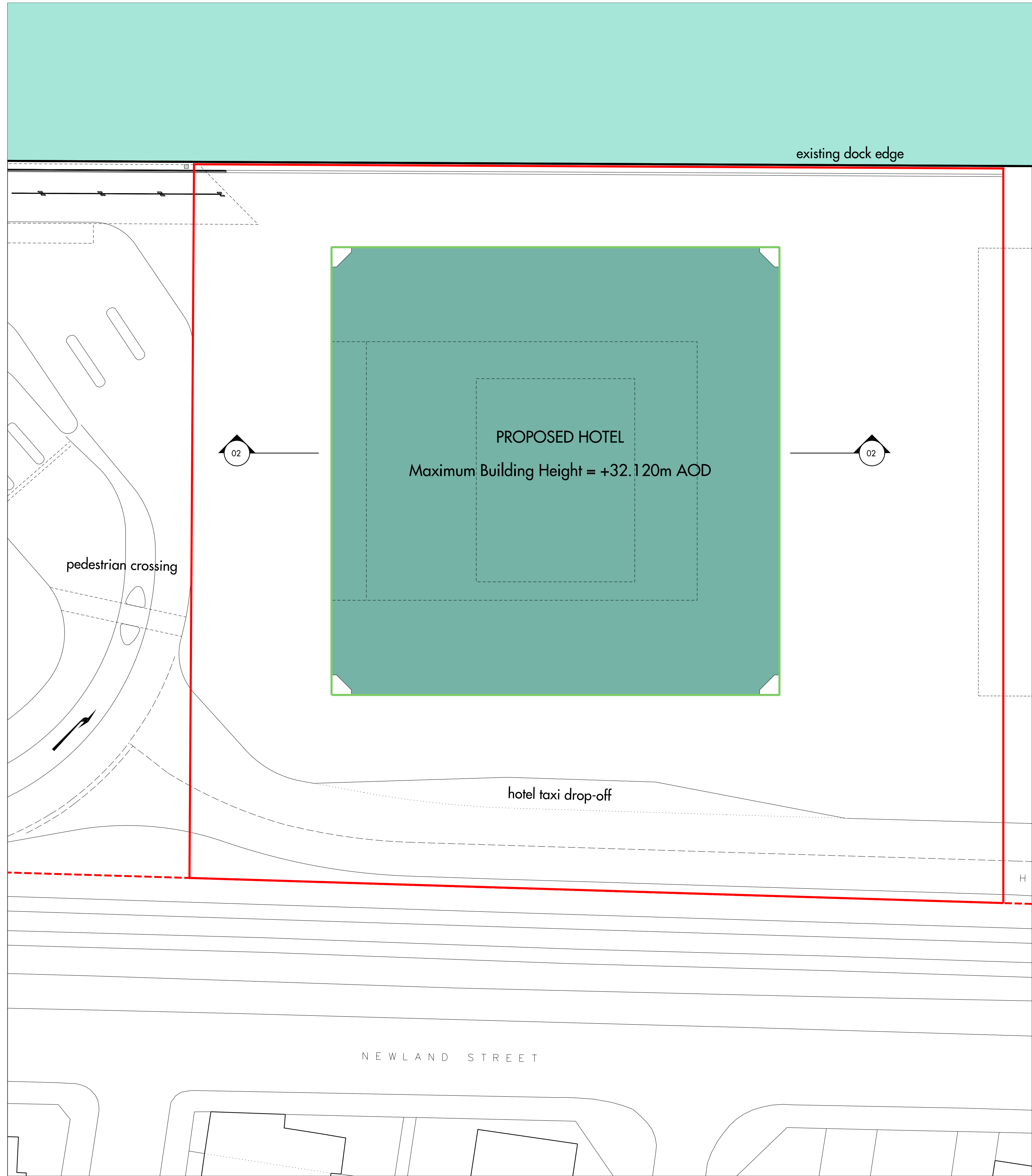


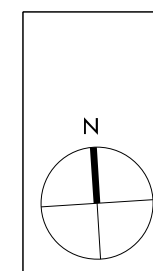
FOR APPROVAL



Illustrative Scheme shown in section

01
PARAMETER PLAN
SCALE 1:250

02
SECTION AA
SCALE 1:250



Do not scale from this drawing. Use figured dimensions only. Figured dimensions are in millimetres. All levels are in metres. All dimensions and levels shall be verified on site before proceeding with works. Detailed site survey to be carried out to verify positions and level relationships with site features and ordnance survey. The architect must be notified of any discrepancy. Where building components are described in the specification as contractor designed, "construction" information relating to those components on this drawing represents design intent only.

REV	DATE	DESCRIPTION	CKD
P1	15.07.13	PLANNING SUBMISSION ISSUE	JB

- KEY
- Red line for primary application 'Application CADP 1'
 - Red line for hotel outline application 'Application CADP 2'
 - Maximum Building Plot
 - Building Envelope
 - Illustrative Scheme

Allies and Morrison
85 Southwark Street
London SE1 0HX
telephone 020 7921 0100
facsimile 020 7921 0101
email info@alliesandmorrison.com
A&M JOB NO: 859

CITY AIRPORT HOTEL
10.4 PROPOSED MAXIMUM HEIGHTS
PARAMETER PLAN
859_07_103
SCALE 1:250 @A1 1:500@A3

P1
Revision