



IT IS ASSUMED THAT ALL WORKS ON THIS DRAWING WILL BE CARRIED OUT BY A COMPETENT CONTRACTOR WORKING, WHERE APPROPRIATE, TO AN APPROPRIATE METHOD STATEMENT.

THIS DRAWING IS TO BE USED ONLY FOR THE PURPOSE OF ISSUE THAT IT WAS ISSUED FOR.

1. THE LANDSCAPE DRAWINGS ARE ISSUED FOR APPROVAL AND TO SET OUT THE MAIN DESIGN INTENT AND MITIGATION STRATEGIES.
2. THE RED LINE BOUNDARY SHOWN IS BASED ON DRAWING GEN-ACM-HGN-HIF1_ZZ_ZZ_ZZ-DR-CH-0001-P17
3. THE LANDSCAPE DESIGN LAYOUT IS BASED ON THE LATEST GENERAL ARRANGEMENT HIGHWAY LAYOUTS AS FOLLOWS:
 - A4130 WIDENING, HANDOVER REVISION P08
 - SCIENCE BRIDGE, HANDOVER REVISION P08
 - RIVER CROSSING, HANDOVER REVISION P08
 - CLIFTON BYPASS, HANDOVER REVISION P09
4. THE PROPOSED LANDSCAPE DESIGN LAYOUTS TAKE INTO ACCOUNT THE EXISTING UTILITIES. UTILITIES DIVERSION AND REROUTING MIGHT IMPACT THE FINAL LANDSCAPE DESIGN LAYOUTS.
5. FOR INFORMATION ON EXISTING VEGETATION PLEASE REFER TO THE DRAFT ARBORICULTURIST IMPACT ASSESSMENT (AIA) GEN_PD-ACM-ELS-SW_ZZ_ZZ_ZZ-RP-AB-0002

Existing vegetation to be retained where possible. Where vegetation is removed, this will be replaced with local native vegetation types.

REFER TO SHEET 1 FOR CONTINUATION

REFER TO SHEET 3 FOR CONTINUATION

SCHEME EXTENTS

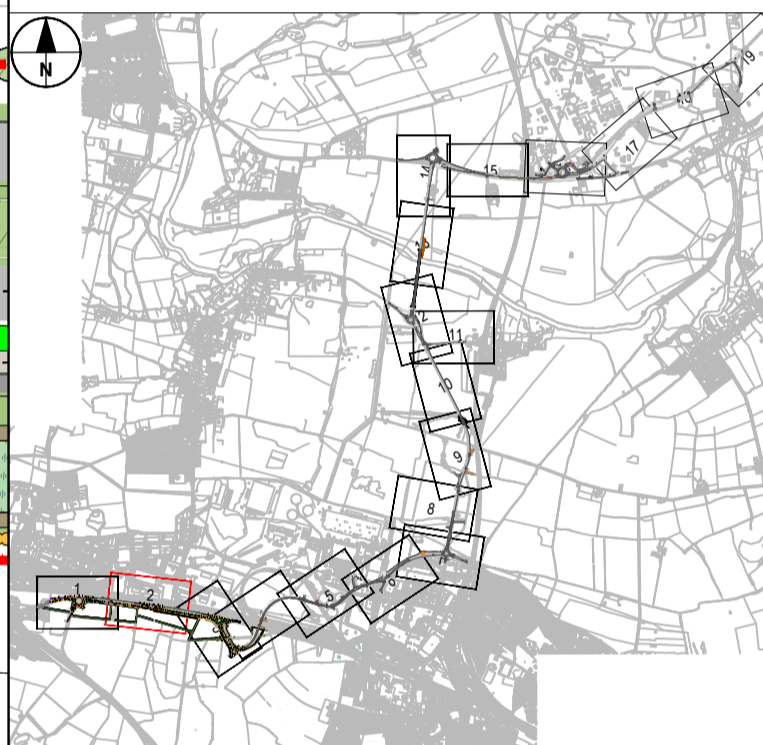
0 25 50 m
1:1000

© Crown Copyright [and database rights Oxfordshire County Council] [2022] OS [0100023343]. You are permitted to use this data solely to enable you to respond to, or interact with, the organisation that provided you with the data. You are not permitted to copy, sub-licence, distribute or sell any of this data to third parties in any form.

KEY

- | | |
|---|--|
| LE1.3 LOW GROWING SPECIES RICH GRASSLAND (UP TO 0.5m TALL) | LE6.4 MARSH AND WET GRASSLAND |
| LE1.2 GRASS WITH BULBS | LE 3.3 SEDUM BLANKET |
| LE2.1 WOODLAND | HAWTHORN PLANTING |
| LE2.2 WOODLAND EDGE/SCRUB | POND |
| LE2.4 LINEAR BELT OF SHRUBS AND TREES | EXISTING VEGETATION |
| LE3.2 NATIVE SHRUB PLANTING | GROUNDCOVER/ SHRUBS |
| LE4.4 NATIVE SPECIES HEDGEROW WITH TREES | RIPARIAN PLANTING |
| LE5.1 INDIVIDUAL TREE | GRASSCRETE |
| | SPECIES RICH GRASS WITH INTERMITTENT TREES |

- LOCATION OF GREENED ACOUSTIC BARRIER
- GRAVEL ACCESS TRACK
- CYCLE PATH
- LIGHTING COLUMN



SECOND REVISION	JG	MAL	25/08/21	P02
THIRD VERSION	MAL	MAL	13/09/21	P03
REG 25 UPDATE	BGL	WL	12/08/22	P04
REG 25 No. 2 UPDATE	BGL	WL	26/04/23	P05
REVISION DETAILS		By	Date	Suffix
		Check		

Purpose of issue

SUITABLE FOR APPROVAL

Client

County Hall
New Road
Oxford
OX1 1ND

OXFORDSHIRE
COUNTY COUNCIL

Project Title

DIDCOT GARDEN TOWN
HOUSING INFRASTRUCTURE
FUND (HIF 1)

Drawing Title

FIGURE 8.72B
PRELIMINARY LANDSCAPE
MASTERPLAN
SHEET 2 OF 19

Designed BGL	Drawn BGL	Checked WL	Approved AGB	Date 26/06/23
Internal Project No. 60632497	Suitability S0			
Scale @ A1 1:1000	Discipline Landscape and Visual			

THIS DOCUMENT HAS BEEN PREPARED PURSUANT TO AND SUBJECT TO THE TERMS OF AECOM'S APPOINTMENT BY ITS CLIENT. AECOM ACCEPTS NO LIABILITY FOR ANY USE OF THIS DOCUMENT OTHER THAN BY ITS ORIGINAL CLIENT OR FOLLOWING AECOM'S EXPRESS AGREEMENT TO SUCH USE, AND ONLY FOR THE PURPOSES FOR WHICH IT WAS PREPARED AND PROVIDED.

AECOM
63-77 Victoria Street
St Albans
Herts
AL1 3ER
Tel: +44 (0) 172 7535 000
www.aecom.com

AECOM Infrastructure & Environment UK Limited
Registered in England Registered number: 880328
Registered office: Midpoint, Alencon Link,
Basingstoke, Hampshire RG21 7PP

Drawing Number	Work Package ID	Volume	Type	Number	Rev
GEN_PD-ACM-ELS -DGT_ZZ_ZZ_ZZ-DR-LV -0002					P06
Originator	Location	Role			