 Supply and install new DW Windsor Korum Pro 2 luminaire side entry mounted on existing 10mm Valmont Stanton Avo conical tapered steel lighting column (to OCC specification, see HSD 1300-021). Terminate cables in new isolator in base of column.

**MOUNTING:** 0.75m with 5° uplift side entry bracket, lantern to be installed at -5°

**LED OUTPUT:** CLO, 400mA, 66W, 9.80klm

**OPTIC:** 64LED 3k A1

**DIMMING:** 100%, 75% 00:00 to 06:00

**SWITCHING:** 7-pin NEMA socket with Westline 7200 35/18 Photocell

**e F** Mini luminaires side entry mounted on new 5m Abacus Raise and Lowering spring operated lighting column (to OCC specification, see HSD 1300-007). Terminate cables in new isolator in base of column and transfer all attachments from adjacent removed lighting columns if applicable.

**MOUNTING:** Post top mounted

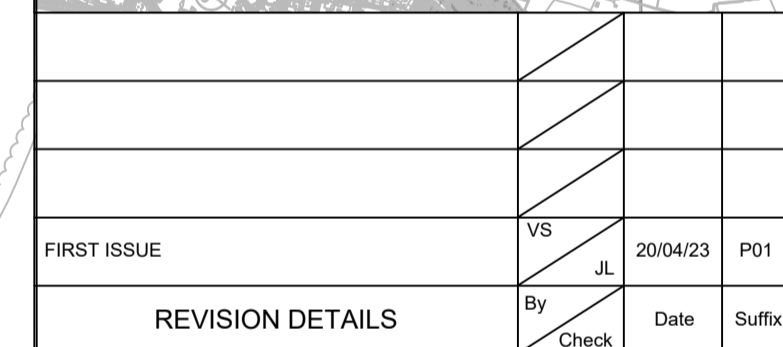
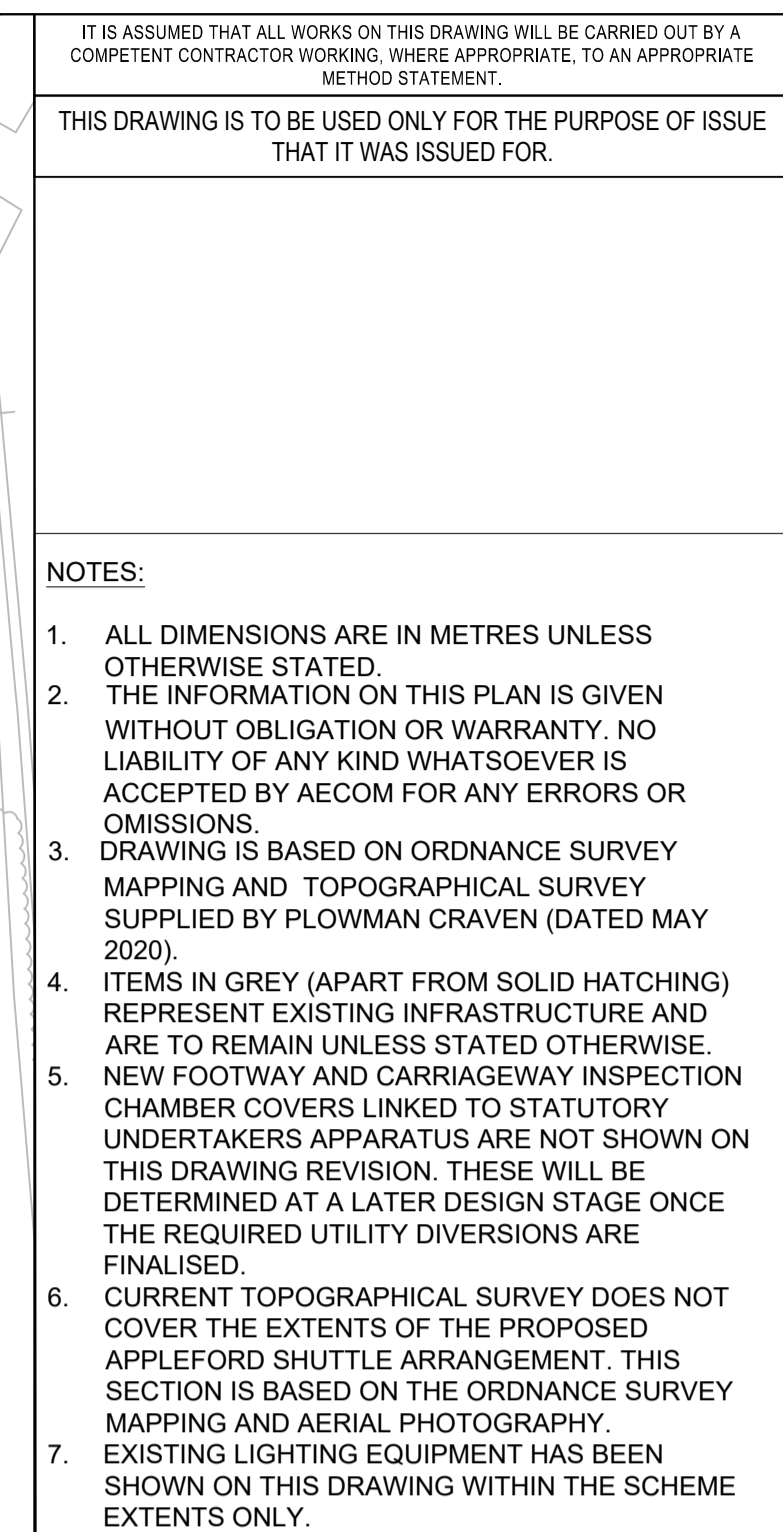
**LED OUTPUT:** CLO, 550mA, 26W, 3.56klm

**OPTIC:** 16LED 3k A2

**DIMMING:** 100%, 75% 00:00 to 06:00

**SWITCHING:** 7-pin NEMA socket with Westre 7200 series 35/18 Photocell

Supply and install new DW Windsor Kiritum Pro 2 luminaire side entry mounted on new 10m Style 2 stepped galvanised steel column (to OCC specification, see HSD 1300-006).  
Terminate cables in new isolator  
In base of column.  
MOUNTING: Post top with 0° uplight  
LED OUTPUT: CLO, 250mA, 27W, 5.11klm  
OPTIC: 48LED 3k C3  
DIMMING: 100%, 75% 00:00 to 06:00  
SWITCHING: 7-pin NEMA socket with Westire 7200 35/18 Photocell



SUITABLE FOR INFORMATION

Client

 **OXFORDSHIRE  
COUNTY COUNCIL**

Project Title

DIDCOT GARDEN TOWN  
HIF 1 SCHEMES  
PRELIMINARY DESIGN

Drawing Title

DIDCOT RIVER CROSSING  
LIGHTING  
LIGHTING CONTOUR  
SHEET 2 OF 2

Designed ----	Drawn VS	Checked AC	Approved JL	Date 26/06/23
Internal Project No. 60632497		Suitability S2		
Scale @ A1 1:1000		Discipline Lighting and Electrical		

THIS DOCUMENT HAS BEEN PREPARED PURSUANT TO AND SUBJECT TO THE TERMS OF AECOM'S APPOINTMENT BY ITS CLIENT. AECOM ACCEPTS NO LIABILITY FOR ANY USE OF THIS DOCUMENT OTHER THAN BY ITS ORIGINAL CLIENT OR FOLLOWING AECOM'S EXPRESS AGREEMENT TO SUCH USE, AND ONLY FOR THE PURPOSES FOR WHICH IT WAS PREPARED AND PROVIDED.

**AECOM**  
63-77 Victoria Street  
St Albans  
Herts  
AL1 3ER  
Tel: +44 (0) 172 7535 000  
[www.aecom.com](http://www.aecom.com)




**AECOM**  
AECOM Infrastructure & Environment UK Limited  
Registered in England Registered number: 890328  
Registered office: Midpoint, Alencon Link,  
Basingstoke, Hampshire RG21 7PP

Drawing Number Work Package ID <b>RIV_PD</b> <b>SW_LTG_ZZ_ZZ</b> Location	I Originator <b>-ACM</b>	I Volume <b>-HLG -</b> <b>-DR -LE -0011</b> I Type    I Role    I Number	Rev <b>P02</b>
---	-----------------------------	---	-------------------

© Crown Copyright [and database rights Oxfordshire County Council] [2022] OS [0100023343]. You are permitted to use this data solely to enable you to respond to, or interact with, the organisation that provided you with the data. You are not permitted to copy, sub-licence, distribute or sell any of this data to third parties in any form.

KEY

- |     |                           |
|-----|---------------------------|
| 1.0 | 1.0 LUX ISO CONTOUR LINE. |
| 5.0 | 5.0 LUX ISO CONTOUR LINE. |
| 10  | 10 LUX ISO CONTOUR LINE.  |
| 15  | 15 LUX ISO CONTOUR LINE.  |
| 25  | 25 LUX ISO CONTOUR LINE.  |

 PROPOSED LIGHTING COLUMN  
 Proposed Column/Sign Identifier  
 Proposed Electrical Supply Type

SUPPLY TYPE  
DNO: Distributor Network Operator  
PCN: Private Connection Network

DNO-[N] / [D] / [T] / [R]: DNO new service / disconnection / transfer / remain.  
PCN-[N] / [D] / [T] / [R]: PCN new service / disconnection / transfer / remain.

© Crown copyright and database rights 2019 Ordnance Survey 100030649 (2021)