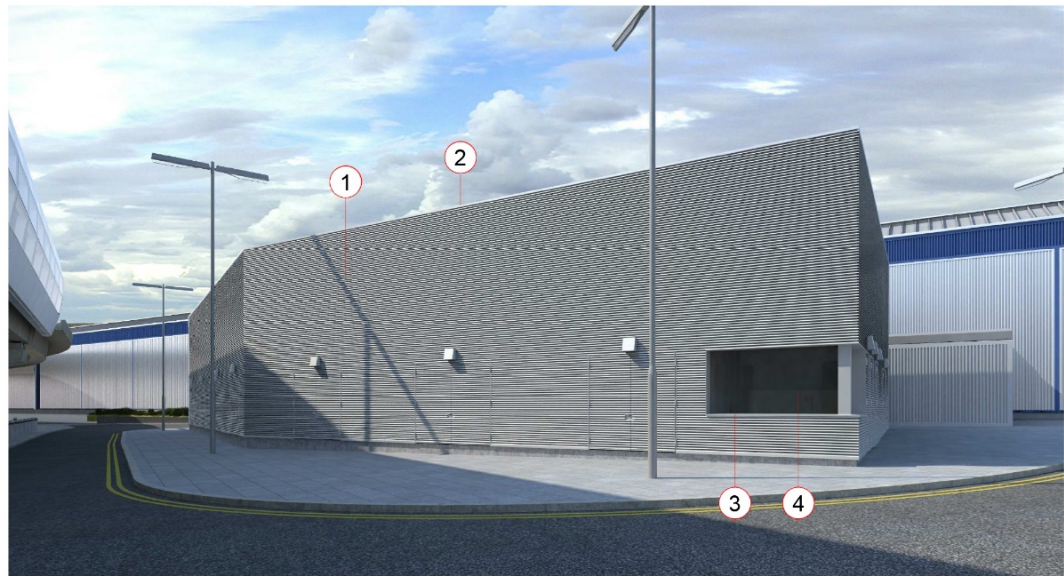


4.0 Appendix 1: Details for Information



WESTERN ENERGY CENTRE (WEC) MATERIAL DETAILS

1

Anodised aluminium, natural finish

LOCATION: Louvre envelope screen and doors.

SAMPLE/IMAGE OBTAINED FROM: Levolux. Sample not provided.

PRODUCT/DESCRIPTION: Levolux VLS 50 or similar approved linear louvres with a curved profile to block views of the plant systems behind while providing high air flow ventilation for mechanical requirements.

COLOUR/FINISH: Anodised aluminium, natural finish.

2

LOCATION: R30 roof.

SAMPLE/IMAGE OBTAINED FROM: Bauder Limited. Sample not provided.

PRODUCT/DESCRIPTION: Inverted roof; loosely laid insulation boards over waterproof membrane and concrete pavers over.

COLOUR/FINISH: Concrete pavers.

3

Anodised aluminium, natural finish

LOCATION: Window, door frames and trims.

SAMPLE/IMAGE OBTAINED FROM: Schueco. Sample not provided.

PRODUCT/DESCRIPTION: Aluminium door and window joinery (profile TBC).

COLOUR/FINISH: Anodised aluminium, natural finish to match louvre envelope.

4

LOCATION: Window glazing.

SAMPLE/IMAGE OBTAINED FROM: Saint Gobain. Sample not provided.

PRODUCT/DESCRIPTION: Double glazing with 16mm air-filled cavity, 10mm outer Saint Gobain glass, 4mm inner Saint Gobain Planilux glass.

COLOUR/FINISH: Parsol Grey

Note:
Any reproduction of Ordnance Survey map work illustrated on this drawing is covered by licence (No. SR151586) issued by the Director General, Ordnance Survey and allows PASCALL+WATSON LIMITED ("The Licensee") to copy Ordnance Survey material for their business use.
The signed control copy of this drawing is held at the offices of PASCALL+WATSON LIMITED.

- All information shown outside the Proposal Boundary is for illustrative purposes only.

- Internal layouts are for illustrative purposes only.

- Base building survey information by LCY and MSA

SCALE BAR

NOTE:
ALL PRODUCTS ILLUSTRATED HERE ACCORD WITH THE ARCHITECTURAL INTENTION. HOWEVER THESE PRODUCTS MAY BE SUBSTITUTED DURING LCY'S PROCUREMENT PROCESS AND WILL BE REQUIRED TO RETAIN SUFFICIENT VISUAL AND MATERIAL SIMILARITY TO THE ARCHITECTURAL INTENT.

B	CG	24/01/18	PCC34: For Planning Approval
Previously issued as A400-PAW-A-03-XXX-DR-DE-735-006			
A	RC	10/02/17	For Planning Approval
Rev	Dim	Date	Description

Planning

London City Airport
Get closer.
London City Airport Limited City Aviation House Royal Docks London E16 2pb

PASCALL+WATSON
The Warehouse, 10 Black Friars
Lane London EC4V 6ER
T 444 (0)20 3837 2500
www.pascall-watson.co.uk

Client
LONDON CITY AIRPORT

Project Name
CITY AIRPORT DEVELOPMENT PROGRAMME

File
CADP
Pre-Commencement
Condition 34:
Material Details - Sheet 2

Discipline Architecture	Project of Issue For Approval		
Discipline Originator Pascall+Watson architects	Discipline Job No 5077		
Checked By SW	Checked date 24/01/2018	Drawn By AB	Drawn Date 24/01/2018
Approved By MN	Approval Date 24/01/2018	Scale @ A1 1 : 300	

Building Grid Reference
CADP

Proj Code	Orig	Disc	Zone	Level	File	Type	Discipline	Disc	Source	Rev	Status
A400 PAW	A	14	XXXXXX	DR	DE	213-002	B	IS	3		

Figure 4.0.1: Western Energy Centre Material Details

9

Note:
Any reproduction of Ordnance Survey map work illustrated on this drawing is covered by licence (No. SR151580) issued by the Director General, Ordnance Survey and allows PASCALL+WATSON Limited ("The Licensee") to copy Ordnance Survey material for their business use.
The signed control copy of this drawing is held at the offices of PASCALL+WATSON Limited.

- All information shown outside the Proposal Boundary is for illustrative purposes only.
- Internal layouts are for illustrative purposes only.
- Base building survey information by LCY and MSA.

SCALE BAR

N

NOTE:
ALL PRODUCTS ILLUSTRATED HERE ACCORD WITH THE ARCHITECTURAL INTENTION. HOWEVER THESE PRODUCTS MAY BE SUBSTITUTED DURING LCY'S PROCUREMENT PROCESS AND WILL BE REQUIRED TO RETAIN SUFFICIENT VISUAL AND MATERIAL SIMILARITY TO THE ARCHITECTURAL INTENT.

B	AB	06/10/17	PCC34: For Planning Approval
Previously issued as A400-PAW-A-03-XXXX-DR-DE-735-005			
A	RC	10/02/17	For Planning Approval
Rev	Dim	Date	Description

Planning

London City Airport
Get closer.
London City Airport Limited City Aviation House Royal Docks London E16 2p

PASCALL+WATSON
The Warehouse 10 Black Friars Lane London EC4V 6ER
T +44 (0)20 3537 2500
www.pascall.co.uk

Client:
LONDON CITY AIRPORT

Project Name:
CITY AIRPORT DEVELOPMENT PROGRAMME

Title:
CADD
Pre-Commencement
Condition 34:
Material Details - Sheet 1

Discipline: Architecture		Purpose of Issue: For Approval	
Drawing Originator: Pascall+Watson architects		Originator Job No: 5077	
Checked By: SW	Checked date: 06/10/2017	Drawn By: AB	Drawn Date: 06/10/2017
Approved By: MN	Approval Date: 06/10/2017	Scale @ A1: 1 : 300	

Building Grid Reference:
CADD

Proj Code	Orig	Dim	Zone	Level	Title	Type	Subapp/Orig	Revised	Rev	Status
A400-PAW	A	14	XXXX	DR	DE	213-001	B	S3		



WESTERN TERMINAL EXTENSION (WTE) MATERIAL DETAILS

1

Anodised aluminium, natural finish

LOCATION: Mesh screen over metal cladding.

SAMPLE/IMAGE OBTAINED FROM: James & Taylor. Loose sample provided.

PRODUCT/DESCRIPTION: Facade screen system; expanded aluminium mesh with trapezoidal eye slits and 15mm gap between panels. Steel face composite panel behind, RAL 7021.

COLOUR/FINISH: Anodised expanded aluminium mesh, natural finish.

2

RAL 7021 Black Grey colour.

LOCATION: Metal cladding at L00 external walls.

SAMPLE/IMAGE OBTAINED FROM: Booth Muir. Loose sample provided.

PRODUCT/DESCRIPTION: Facade panel system; aluminium metal panels with recessed joints.

COLOUR/FINISH: RAL 7021 Black Grey colour.

3

Black Grey colour.

LOCATION: Rotated mesh panels at ground level external walkway.

SAMPLE/IMAGE OBTAINED FROM: James & Taylor. Loose sample provided.

PRODUCT/DESCRIPTION: Screen panel; expanded aluminium mesh with trapezoidal eye slits fixed in steel frame.

COLOUR/FINISH: Anodised expanded aluminium mesh, Black Grey colour.

4

LOCATION: R30 roof.

SAMPLE/IMAGE OBTAINED FROM: Bauder Limited. Sample not provided.

PRODUCT/DESCRIPTION: Inverted roof; loosely laid insulation boards over waterproof membrane and concrete pavers over.

COLOUR/FINISH: Concrete pavers.

5

Clear glass

LOCATION: Window glazing.

SAMPLE/IMAGE OBTAINED FROM: Saint Gobain. Sample not provided.

PRODUCT/DESCRIPTION: Double glazing with 16mm air-filled cavity, 8mm outer Saint Gobain Planiclear glass, 10.8 mm inner Saint Gobain Planiclear glass.

COLOUR/FINISH: Clear glass (SGG Planiclear).

6

RAL 7021 Black Grey colour.

LOCATION: In all facade glazing elements.

SAMPLE/IMAGE OBTAINED FROM: Schueco. Sample not provided.

PRODUCT/DESCRIPTION: Aluminium curtain wall with vertical silicone joint (profile TBC).

COLOUR/FINISH: External framing in polyester powder coated (PPC) aluminium, RAL 7021, when required at the edges of the windows.

7

Anodised aluminium, natural finish

LOCATION: Selected windows

SAMPLE/IMAGE OBTAINED FROM: James & Taylor. Loose sample provided.

PRODUCT/DESCRIPTION: Expanded aluminium mesh panel with trapezoidal eye slits and metal frame.

COLOUR/FINISH: Anodised expanded aluminium mesh, natural finish.

8

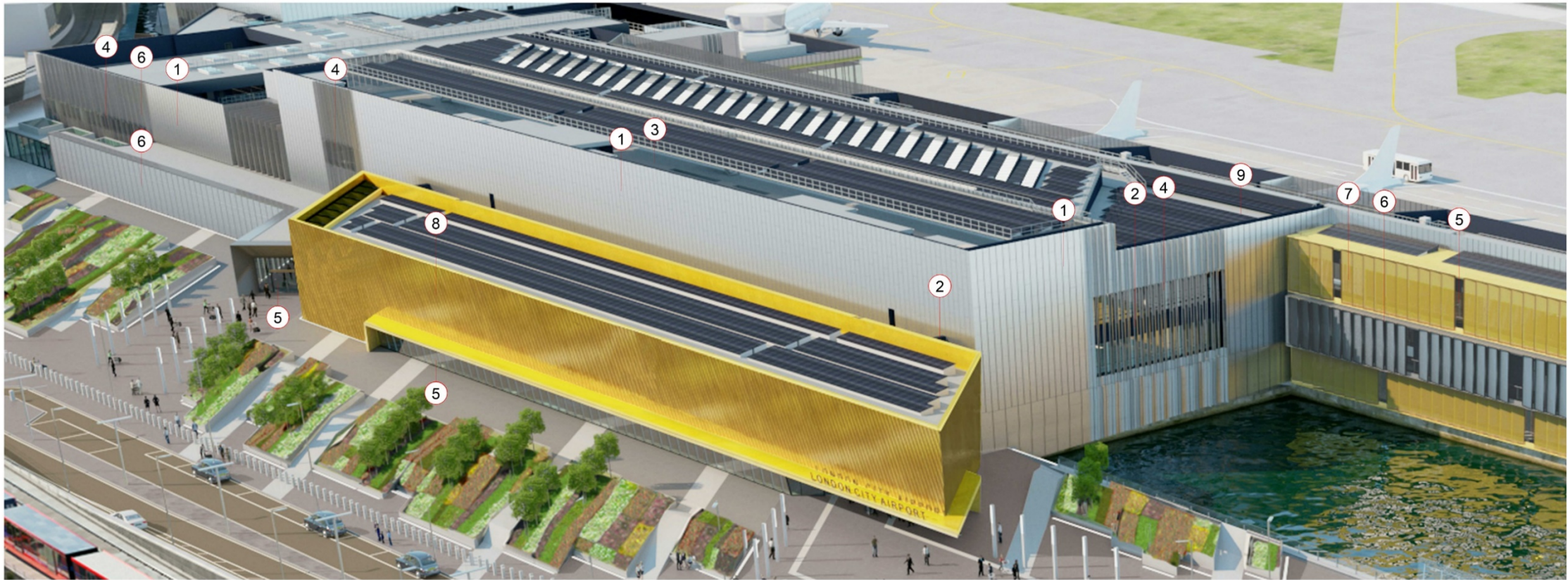
LOCATION: Roof at ground level external walkway.

SAMPLE/IMAGE OBTAINED FROM: Kalzip. Loose sample provided.

PRODUCT/DESCRIPTION: Aluminium standing seam profiled roof.

COLOUR/FINISH: Polyvinylidene fluoride coating (PVDF) aluminium, RAL 7021 Black Grey colour.

Figure 4.0.2: Western Terminal Extension Material Details



MAIN TERMINAL BUILDING (MTB) & EASTERN TERMINAL EXTENSION (ETE) MATERIAL DETAILS

1

Anodised aluminium, natural finish

LOCATION: Mesh screen over metal cladding.

SAMPLE/IMAGE OBTAINED FROM: James & Taylor. Loose sample provided.

PRODUCT/DESCRIPTION: Facade screen system; expanded aluminium mesh with trapezoidal eye slits and 15mm gap between panels. Steel face composite panel behind, RAL 7021.

COLOUR/FINISH: Anodised expanded aluminium mesh, natural finish.

2

RAL 7021 Black Grey colour.

LOCATION: Metal cladding at L00 and L10 external walls.

SAMPLE/IMAGE OBTAINED FROM: Booth Muir. Loose sample provided.

PRODUCT/DESCRIPTION: Facade panel system; aluminium metal panels with recessed joints.

COLOUR/FINISH: RAL 7021 Black Grey colour.

3

Black Grey colour.

LOCATION: R30 roof.

SAMPLE/IMAGE OBTAINED FROM: Bauder Limited. Sample not provided.

PRODUCT/DESCRIPTION: Inverted roof; loosely laid insulation boards over waterproof membrane and concrete pavers over.

COLOUR/FINISH: Concrete pavers.

4

Clear glass

LOCATION: Window glazing.

SAMPLE/IMAGE OBTAINED FROM: Saint Gobain. Sample not provided.

PRODUCT/DESCRIPTION: Double glazing with 16mm air-filled cavity, 8mm outer Saint Gobain Planiclear glass, 10.8 mm inner Saint Gobain Planiclear glass.

COLOUR/FINISH: Clear glass (SGG Planiclear).

5

RAL 7021 Black Grey colour.

LOCATION: In all facade glazing elements.

SAMPLE/IMAGE OBTAINED FROM: Schueco. Sample not provided.

PRODUCT/DESCRIPTION: Aluminium curtain wall with vertical silicone joint (profile TBC).

COLOUR/FINISH: External framing in polyester powder coated (PPC) aluminium, RAL 7021, when required at the edges of the windows.

6

Anodised aluminium, natural finish

LOCATION: Selected windows

SAMPLE/IMAGE OBTAINED FROM: James & Taylor. Loose sample provided.

PRODUCT/DESCRIPTION: Expanded aluminium mesh panel with trapezoidal eye slits and metal frame

COLOUR/FINISH: Anodised expanded aluminium mesh, natural finish.

7

LOCATION: Mesh screen over metal cladding at L00-L20 external walls.

SAMPLE/IMAGE OBTAINED FROM: James & Taylor. Loose sample provided.

PRODUCT/DESCRIPTION: Expanded aluminium mesh panel with trapezoidal eye slits and metal frame.

COLOUR/FINISH: Gold Anodised expanded aluminium mesh.

8

LOCATION: Standing seam cladding on Landside Building.

SAMPLE/IMAGE OBTAINED FROM: eZinc. Loose sample provided.

PRODUCT/DESCRIPTION: Titanium zinc (gold coloured) standing seam cladding with diagonal seam direction.

COLOUR/FINISH: Gold zinc.

9

LOCATION: Light weight roofs, L10, L20 and R30

SAMPLE/IMAGE OBTAINED FROM: Kalzip. Loose sample provided.

PRODUCT/DESCRIPTION: Aluminium standing seam profiled roof.

COLOUR/FINISH: Polyvinylidene fluoride coating (PVDF) aluminium, silver.

Note:
Any reproduction of Ordnance Survey map work illustrated on this drawing is covered by licence (No. SR151585) issued by the Director General, Ordnance Survey and above PASCALL+WATSON Limited ("The Licensee") to copy Ordnance Survey material for their business use.
The signed control copy of this drawing is held at the offices of PASCALL+WATSON Limited.

- All information shown outside the Proposal Boundary is for illustrative purposes only.

- Internal layouts are for illustrative purposes only.

- Base building survey information by LCY and MSA.

SCALE BAR



NOTE:
ALL PRODUCTS ILLUSTRATED HERE ACCORD WITH THE ARCHITECTURAL INTENTION. HOWEVER THESE PRODUCTS MAY BE SUBSTITUTED DURING LCY'S PROCUREMENT PROCESS AND WILL BE REQUIRED TO RETAIN SUFFICIENT VISUAL AND MATERIAL SIMILARITY TO THE ARCHITECTURAL INTENT.

B	AB	31/01/18	PCC34: For Planning Approval
A	AB	06/10/17	PCC34: For Planning Approval
Rev	Dim	Date	Description

Planning



Client
LONDON CITY AIRPORT

Project Name
CITY AIRPORT DEVELOPMENT PROGRAMME

Title
CADD
Pre-Commencement
Condition 34:
Material Details - Sheet 3

Discipline	Architecture	Purpose of Issue	For Approval
Drawing Originator	Pascall+Watson architects	Originators Job No.	5077
Checked By	SW	Checked date	06/10/2017
Drawn By	AB	Drawn Date	06/10/2017
Approved By	MN	Approval Date	06/10/2017
Scale @ A1	1 : 300		
Building Grid Reference	CADD		
Proj Code	Grp	Doc	Zone
A400	PAW	A	14
XXXXXX	DR	DE	213-003
B	S3		

Figure 4.0.3: Main Terminal Building and Eastern Terminal Extension Material Details

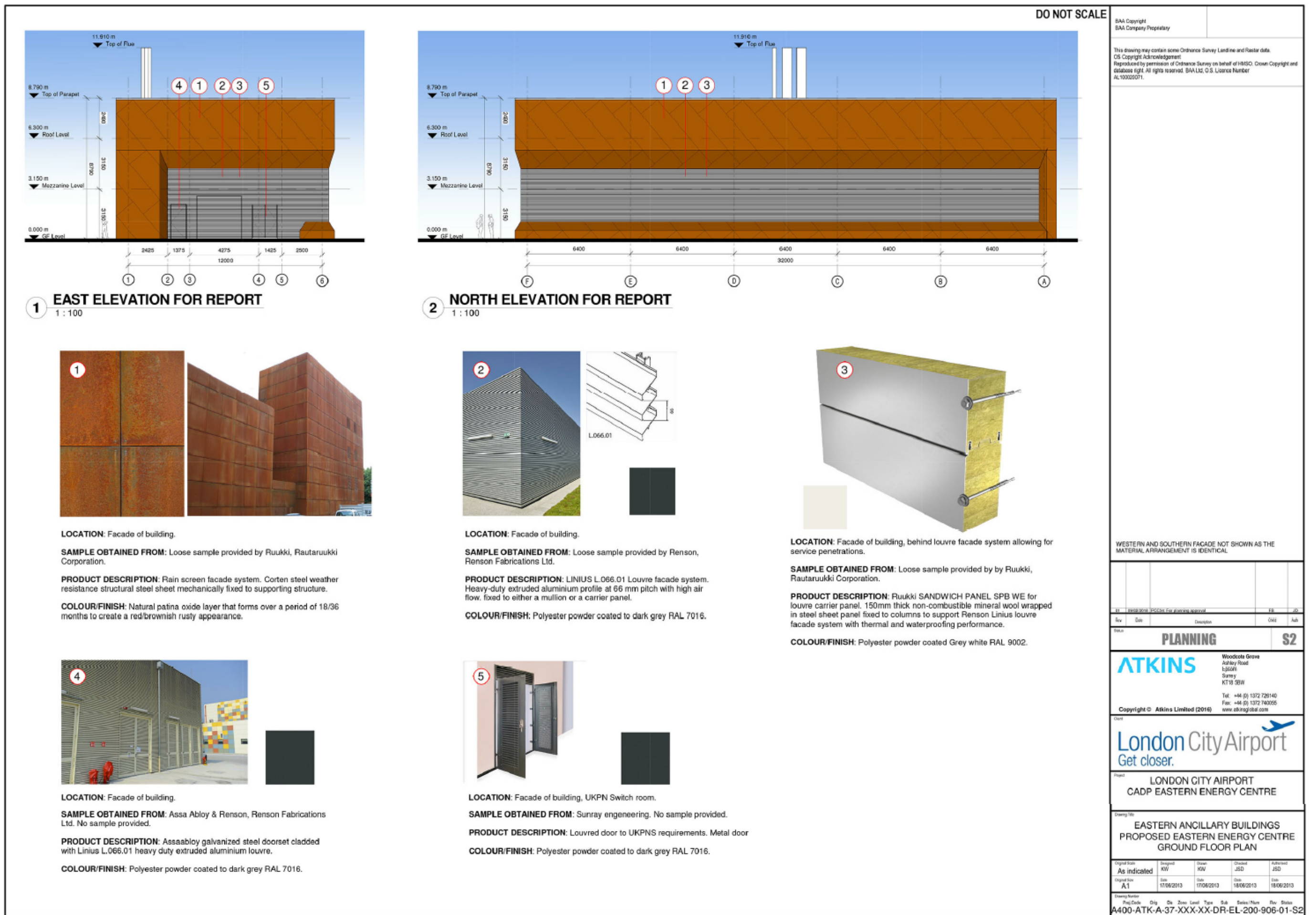


Figure 4.0.5: Eastern Energy Centre Material Details



Figure 4.0.2: New Eastern Pier partial elevation - Approved scheme with expanded metal mesh over composite panelling.



Figure 4.0.3: New Eastern Pier partial elevation - Proposed scheme without mesh to the solid areas of the façade and with exposed, enhanced composite panelling. Mesh is retained where the L20 roof plant areas, as per the approved scheme treatment.



Figure 4.0.4: New Eastern Pier airside perspective view looking south-west - Approved scheme with expanded metal mesh over composite panelling.



Figure 4.0.5: New Eastern Pier airside perspective view looking south-west - Proposed scheme without mesh to the solid areas of the façade and with exposed, enhanced composite panelling. Mesh is retained where the L20 roof plant areas, as per the approved scheme treatment.